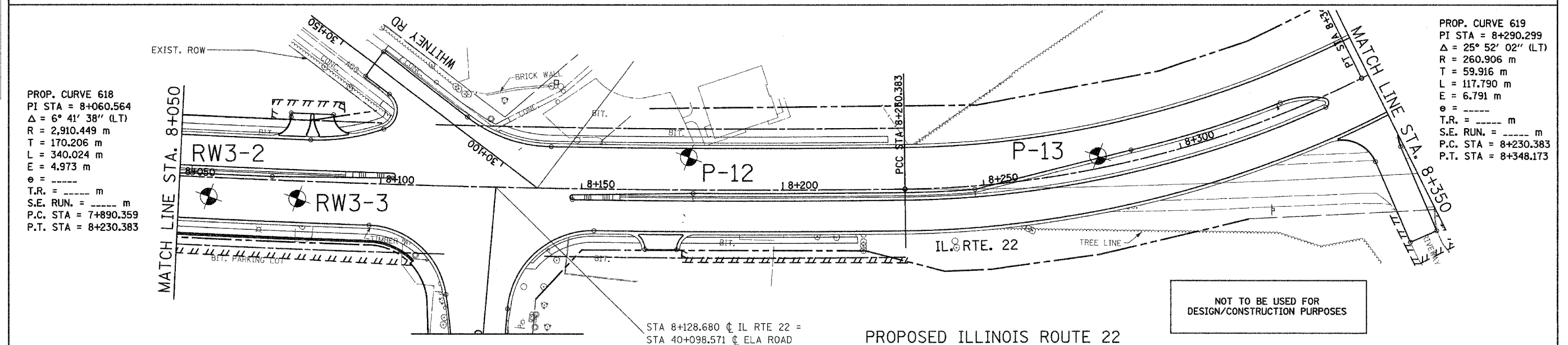
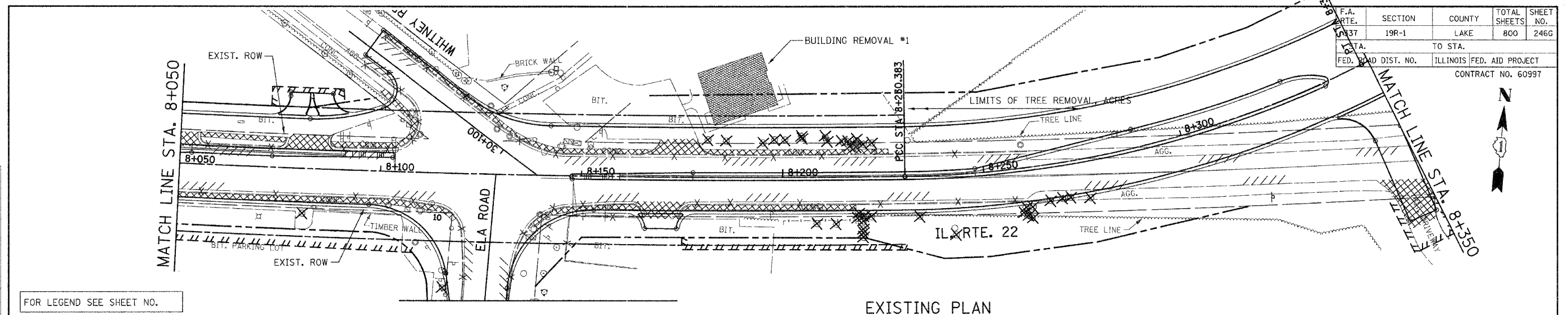


FINAL SURVEY PLOTTED
NOTE BOOK TEMPLATE AREAS CHECKED

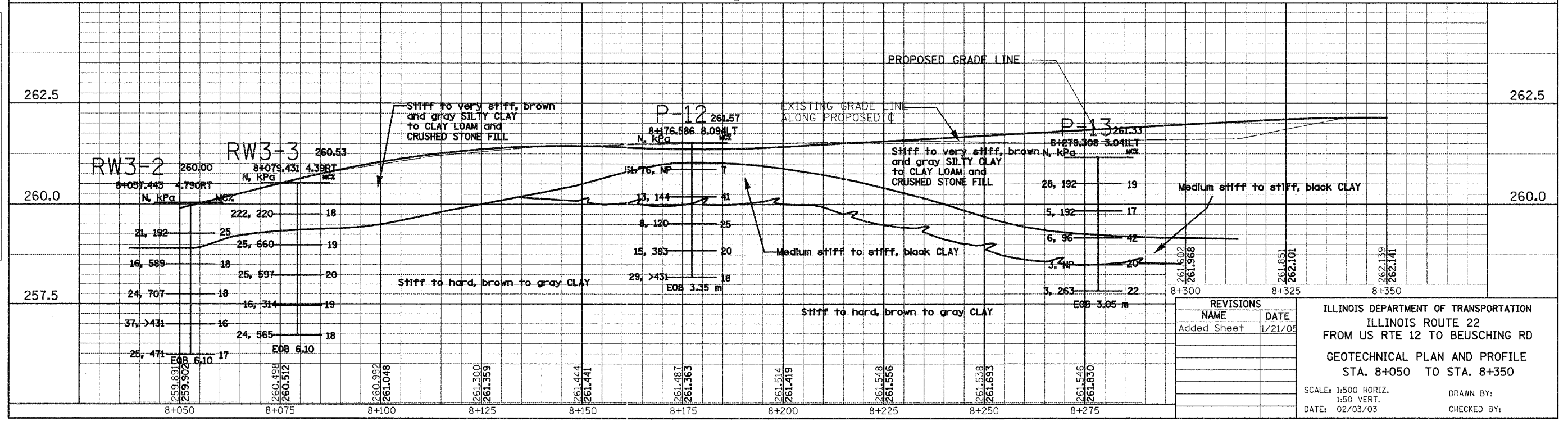
ORIGINAL SURVEY PLOTTED
NOTE BOOK TEMPLATE AREAS CHECKED



PROP. CURVE 618
PI STA = 8+060.564
 $\Delta = 6^\circ 41' 38''$ (LT)
R = 2,910.449 m
T = 170.206 m
L = 340.024 m
E = 4.973 m
e = -----
T.R. = ----- m
S.E. RUN. = ----- m
P.C. STA = 7+890.359
P.T. STA = 8+230.383

PROP. CURVE 619
PI STA = 8+290.299
 $\Delta = 25^\circ 52' 02''$ (LT)
R = 260.906 m
T = 59.916 m
L = 117.790 m
E = 6.791 m
e = -----
T.R. = ----- m
S.E. RUN. = ----- m
P.C. STA = 8+230.383
P.T. STA = 8+348.173

NOT TO BE USED FOR DESIGN/CONSTRUCTION PURPOSES



REVISIONS	
NAME	DATE
Added Sheet	1/21/05

ILLINOIS DEPARTMENT OF TRANSPORTATION
ILLINOIS ROUTE 22
FROM US RTE 12 TO BEUSCHING RD
GEOTECHNICAL PLAN AND PROFILE
STA. 8+050 TO STA. 8+350

SCALE: 1:500 HORIZ.
1:50 VERT.
DATE: 02/03/03

DRAWN BY:
CHECKED BY: