

#60997

DATE: \_\_\_\_\_  
 BY: \_\_\_\_\_  
 SURVEYED: \_\_\_\_\_  
 PLOTTED: \_\_\_\_\_  
 ORIGINAL: \_\_\_\_\_  
 SURVEY PLOTTED: \_\_\_\_\_  
 NOTE BOOK TEMPLATE: \_\_\_\_\_  
 AREAS CHECKED: \_\_\_\_\_  
 NO. \_\_\_\_\_

STR. NO.	A21A	A23A	A24A
STA.	7+533	7+611	7+585
OFF. (m)	2.46RT	12.92LT	2.75LT
TYPE	CB-A	INL-A	CB-A
DIA. (m)	1.2	0.6	1.2
F&G	T-24	T-24	T-24
RIM EL.	255.754	258.236	257.648
INV. N	254.384		256.169
INV. S	254.384		256.169
INV. E			
INV. W		257.100	

\*WM WATER MAIN REQUIREMENTS

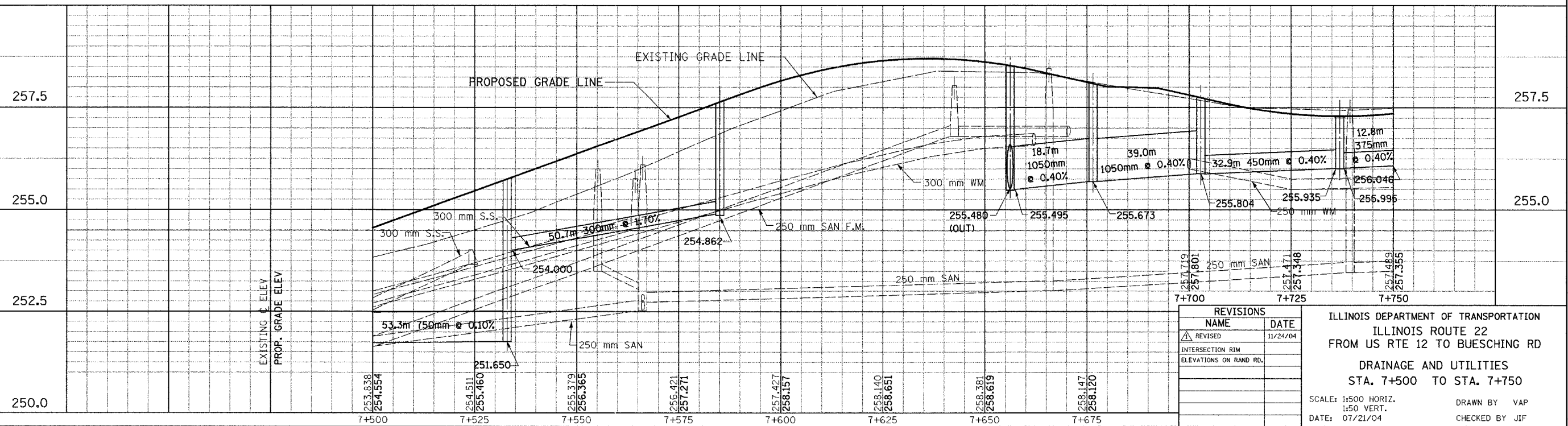
PIPE NO.	A20	A21	A22	A23	A24	B1	B2	B4	B5	B6	B7	B8	B9	B10	B11	B12	B13	B14	B15	B16	B17	B12B	B10A	B14A	A21A	A23A	A24A
SIZE (mm)	300	300	300	300	300	1050	300	300	300	1050	300	450	300	300	300	300	300	300	300	375	300	300	300	300	300	300	300
LENGTH (m)	0.8	9.7	50.7	0.8	15.8	29.2	9.1	18.3	16.4	48.4	16.9	3.3	42.2	1.8	31.8	1.9	3.8	20.3	3.8	3.8	12.8	13.4	4.5	15.5	11.6	25.1	6.4
TYPE	1	1	3	1	1	2	2	2	2	2	2	2	2	2	2	1	1	1	1	1	1	1	1	1	1	1	1
T.B.F. (CU. M.)	0.30	3.50	100.00	0.25	7.10	95.80	2.90	5.80	5.20	13.50	64.00	1.00	N/A	1.00	N/A	1.00	1.70	4.70	1.20	1.30	N/A	1.00	1.00	3.60	6.20	5.90	2.10

STR. NO.	A19	A20	A21	A22	A23	A24	B1	B2	B4	B5	B6	B7	B8	B9	B10	B11	B12	B13	B14	B15	B16
STA.	7+533	7+533	7+533	7+585	7+585	7+585	7+656.3	7+666.3	7+646.0	7+628.5	7+625.5	7+671	7+671.5	7+704	7+701.5	7+737.0	7+737.0	7+742.0	7+737.0	7+741.7	7+734.3
OFF. (m)	8.4LT	10.35 LT	13.95 RT	8.4LT	10.59 LT	13.95 RT	35.66 LT	26.61 LT	18.6LT	17.4 RT	19.9RT	46.1 LT	41.60 LT	17.7 LT	15.85 LT	17.00 LT	13.95 LT	13.95 LT	18.78 RT	15.94 RT	23.19 RT
TYPE	MH-A	CB-A	INL-A	MH-A	CB-A	INL-A	MH-A	INL-A	MH-A	CB-A	CB-A	MH-A	CB-A	MH-A	CB-A	MH-A	CB-A	INL-A	CB-A	INL-A	INL-A
DIA. (m)	1.5	1.2	0.6	1.2	1.2	0.6	2.1	0.6	1.2	1.2	2.1	1.2	1.2	1.5	1.2	1.2	0.6	1.2	0.6	0.6	
F&G	T-1-CL	T-24	T-24	T-1-CL	T-24	T-24	T-1-CL	T-24	T-1-CL	T-24	T-24	T-1-CL	T-24	T-1-CL	T-24	T-1-CL	T-24	T-24	T-24	T-24	T-24
RIM EL.	255.636	255.597	255.525	257.535	257.492	257.427	258.117	257.982	258.600	258.280	258.141	258.600	257.887	257.509	257.490	257.779	257.068	257.068	257.040	257.070	257.247
INV. N	254.484		254.490	256.600	256.105	256.637	255.480	256.300	256.500	256.610		256.959	255.673	255.673	256.630	255.995	255.973	255.973	256.033	256.150	
INV. S	254.268	254.500		256.105	256.637	256.317	255.495	256.610	256.610		256.610		256.610	257.000	256.660	256.660	255.950	255.973	256.033	256.150	
INV. E	254.000			254.862	256.637	255.495	256.166		257.336		257.500	255.673	255.673	255.804	255.804	255.935	256.033	256.071	256.150	256.190	256.190
INV. W	251.650					257.166															

B12B	B10A	B14A
7+722.0	7+686.0	7+737.0
13.95LT	26.4LT	18.78RT
CB-A	CB-A	CB-A
0.6	1.2	1.2
T-24	T-24	T-24
257.156	257.739	257.292
256.167	256.800	256.050
		256.050

260.0 260.0

DATE: \_\_\_\_\_  
 BY: \_\_\_\_\_  
 SURVEYED: \_\_\_\_\_  
 PLOTTED: \_\_\_\_\_  
 ORIGINAL: \_\_\_\_\_  
 SURVEY PLOTTED: \_\_\_\_\_  
 NOTE BOOK TEMPLATE: \_\_\_\_\_  
 AREAS CHECKED: \_\_\_\_\_  
 NO. \_\_\_\_\_



ILLINOIS DEPARTMENT OF TRANSPORTATION  
 ILLINOIS ROUTE 22  
 FROM US RTE 12 TO BUESCHING RD  
 DRAINAGE AND UTILITIES  
 STA. 7+500 TO STA. 7+750  
 SCALE: 1:500 HORIZ. DRAWN BY VAP  
 1:50 VERT. CHECKED BY JIF  
 DATE: 07/21/04