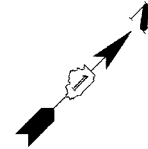
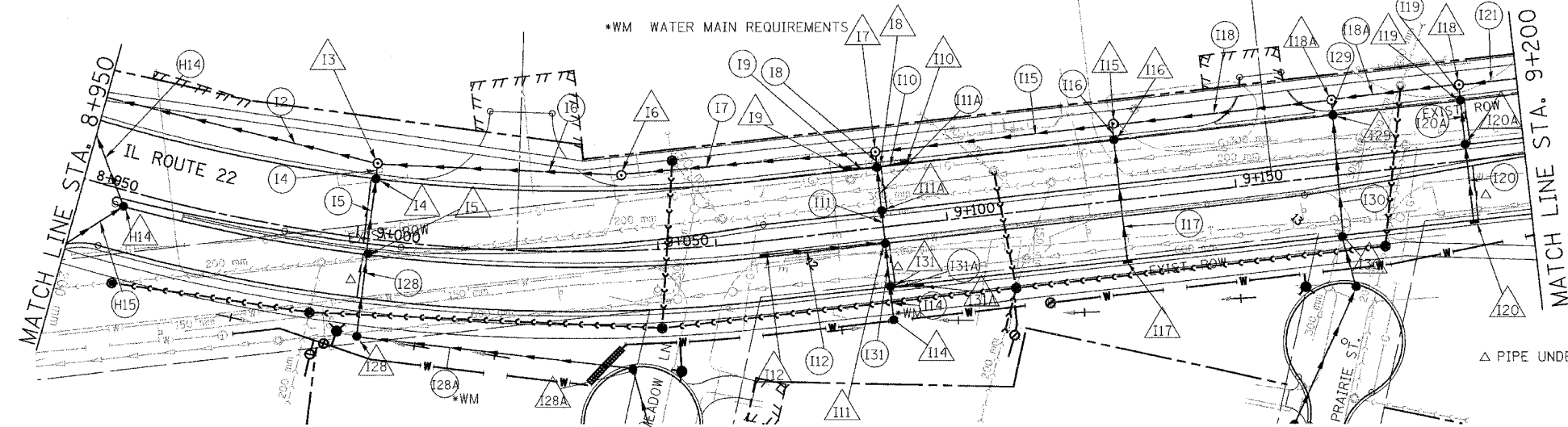


F.A. RTE.	SECTION	COUNTY	TOTAL SHEETS	SHEET NO.
337	19R-1	LAKE	800	265
STA.		TO STA.		
FED. ROAD DIST. NO.		ILLINOIS FED. AID PROJECT		
		60997		

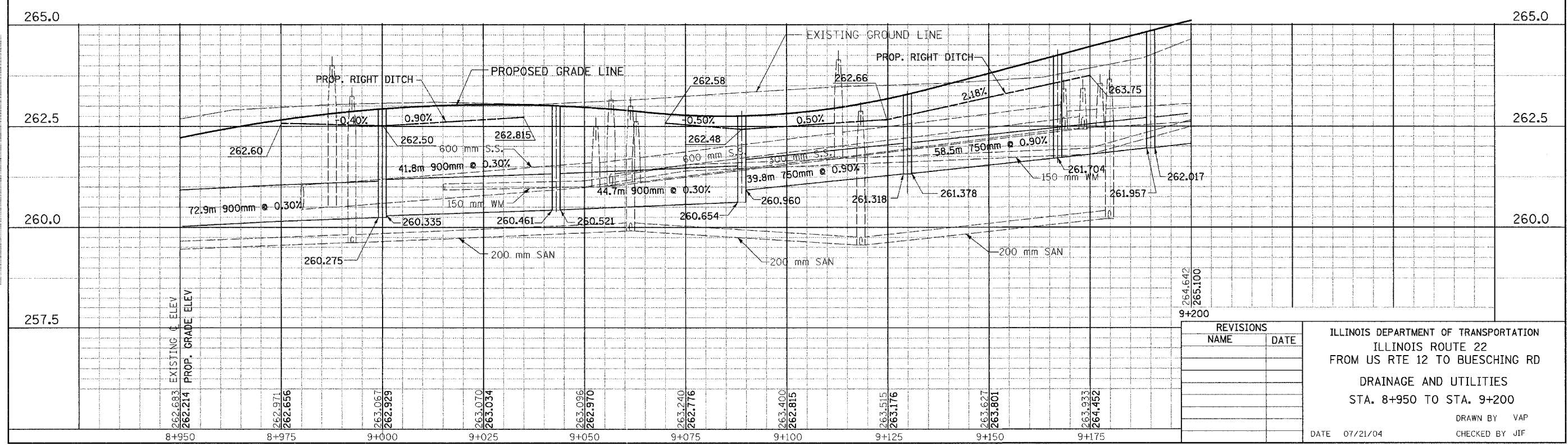


PIPE NO.	14	15	16	17	18	19	110	111	112	120A	128	115	116	117	118	119	120	111A	129	130	131	114	131A	128A	118A
SIZE (mm)	300	300	900	900	450	300	300	300	300	300	300	750	300	300	750	300	300	300	300	300	300	300	300	300	750
LENGTH (m)	2.0	11.9	40.8	44.7	2.0	3.8	3.8	4.3	18.6	6.4	13.4	39.8	2.0	19.5	36.2	2.0	12.2	6.4	1.8	19.5	6.4	4.8	3.8	47.4	20.5
TYPE	1	1	2	2	1	1	1	1	1	1	1	2	1	1	2	1	1	1	1	1	1	1	1	2	2
T.B.F. (CU. M.)	0.50	2.60	130.60	113.30	0.60	0.90	0.90	1.20	4.30	1.80	3.10	95.80	0.50	5.40	129.27	0.60	11.10	1.50	0.60	5.40	1.60	1.10	0.90	2.00	79.63



NOTE: FOR DRAINAGE INFORMATION AT PRAIRIE STREET AND MEADOW LANE SEE SHEET NO. 343, TITLED "SIDE STREET PLANS"

STR. NO.	13	14	15	16	17	18	19	110	111	112	120A	128	115	116	117	118	119	120	111A	129	130	131	114	131A		118A
STA.	9+000.0	9+000.0	9+000.0	9+043.0	9+088.9	9+088.9	9+083.9	9+093.9	9+088.9	9+065.0	9+190.0	9+000.0	9+130.0	9+130.0	9+130.0	9+190.0	9+190.0	9+190.0	9+088.9	9+168.0	9+167.3	9+088.9	9+088.9	9+093.9		9+167.0
OFF. (m)	13.50 LT	10.35 LT	2.75 RT	13.50 LT	13.50 LT	10.35 LT	10.35 LT	10.35 LT	2.75 RT	2.75 RT	2.75 LT	17.00 RT	13.50 LT	10.35 LT	10.35 RT	13.50 LT	10.35 LT	10.35 RT	2.75LT	10.35RT	10.35 LT	10.35 RT	16.50RT	10.35RT		13.5 LT
TYPE	MH-A	CB-A	CB-C	MH-A	MH-A	CB-A	INL-A	INL-A	CB-A	INL-A	CB-A	CB-C	MH-A	CB-A	INL-A	MH-A	CB-A	INL-A	CB-A	CB-A	CB-A	CB-A	CB-C	INL-A		MH-A
DIA. (m)	1.5	1.2	0.6	1.5	1.5	1.2	0.6	0.6	1.2	0.6	1.2	0.6	1.5	1.2	0.6	1.5	1.2	0.6	1.2	1.2	1.2	0.6	0.6	1.2		1.5
F&G	T-1-CL	T-24	T-24	T-1-CL	T-1-CL	T-24	T-24	T-24	T-24	T-24	T-24	T-8	T-1-CL	T-24	T-24	T-1-CL	T-24	T-24	T-24	T-24	T-24	T-24	T-8	T-24		T-1-CL
RIM EL.	262.600	262.590	262.842	262.708	262.529	262.529	262.538	262.537	262.681	262.814	264.843	262.500	263.582	262.129	263.129	264.726	264.691	264.691	262.681	264.118	264.115	262.577	262.480	262.537		264.051
INV. N									261.586	261.586	263.578	261.273	261.885	261.905	262.100	263.494	263.514	263.514	261.543	261.543						262.303
INV. S	261.000	261.020	261.139		261.459	261.479			261.586	261.586	263.578	261.273	261.885	261.905	262.100	263.494	263.514	263.514	261.543	261.543						261.704
INV. E	260.335	261.020	261.139	260.521	260.960	261.479	261.517	261.517	261.650	261.840	263.578	261.273	261.378	261.905	262.100	262.017	263.514	263.514	261.543	261.543						261.704
INV. W	260.275	261.020	261.139	260.461	260.654	261.479			261.650	261.840	263.578	261.273	261.378	261.905	262.100	262.017	263.514	263.514	261.543	261.543	262.604	261.650	262.000			261.704



REVISIONS	
NAME	DATE

ILLINOIS DEPARTMENT OF TRANSPORTATION
 ILLINOIS ROUTE 22
 FROM US RTE 12 TO BUESCHING RD
 DRAINAGE AND UTILITIES
 STA. 8+950 TO STA. 9+200
 DATE 07/21/04
 DRAWN BY VAP
 CHECKED BY JIF

FINAL SURVEY PLOTTED
 NOTE BOOK TEMPLATE
 AREAS CHECKED

ORIGINAL SURVEY PLOTTED
 NOTE BOOK TEMPLATE
 AREAS CHECKED