

PIPE NO.	J23	J24	J25	J26	J27	J28	K27	K28	K29	K30	K31	K26
SIZE (mm)	600	300	300	600	300	300	300	300	900	300	300	900
LENGTH (m)	48.5	1.8	19.5	28.5	1.8	11.9	1.4	11.9	20.5	1.4	6.4	24.5
TYPE	3	1	1	3	1	1	1	1	3	1	1	2
T.B.F. (CU. M.)	N/A	0.50	4.50	N/A	0.50	2.80		2.80	139.60	0.60	1.50	132.90

PIPE NO.	K42	K43	K44	K45	K46	K47
SIZE (mm)	900	300	300	300	300	300
LENGTH (m)	24.5	1.9	13.8	28.7	1.9	11.9
TYPE	3	1	1	2	1	1
T.B.F. (CU. M.)	N/A	0.60	3.20	N/A	0.60	2.80

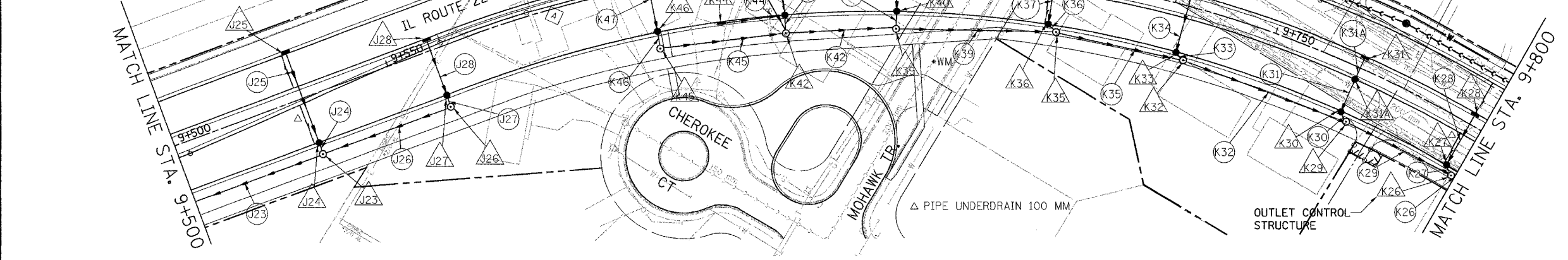
F.A. RTE.	SECTION	COUNTY	TOTAL SHEETS	SHEET NO.
337	19R-1	LAKE	800	267
STA.		TO STA.		
FED. ROAD DIST. NO.		ILLINOIS FED. AID PROJECT		

60997

PIPE NO.	K32	K33	K34	K35	K36	K37	*WM K38	*WM K39	K40	K41
SIZE (mm)	900	300	300	900	300	300	300	900	300	300
LENGTH (m)	43.5	1.4	11.9	30.5	1.4	6.4	25.8	35.5	1.9	11.9
TYPE	3	1	1	3	1	1	1	3	1	1
T.B.F. (CU. M.)	282.10	0.60	2.80	256.00	0.60	1.50	4.40	271.60	0.60	2.80

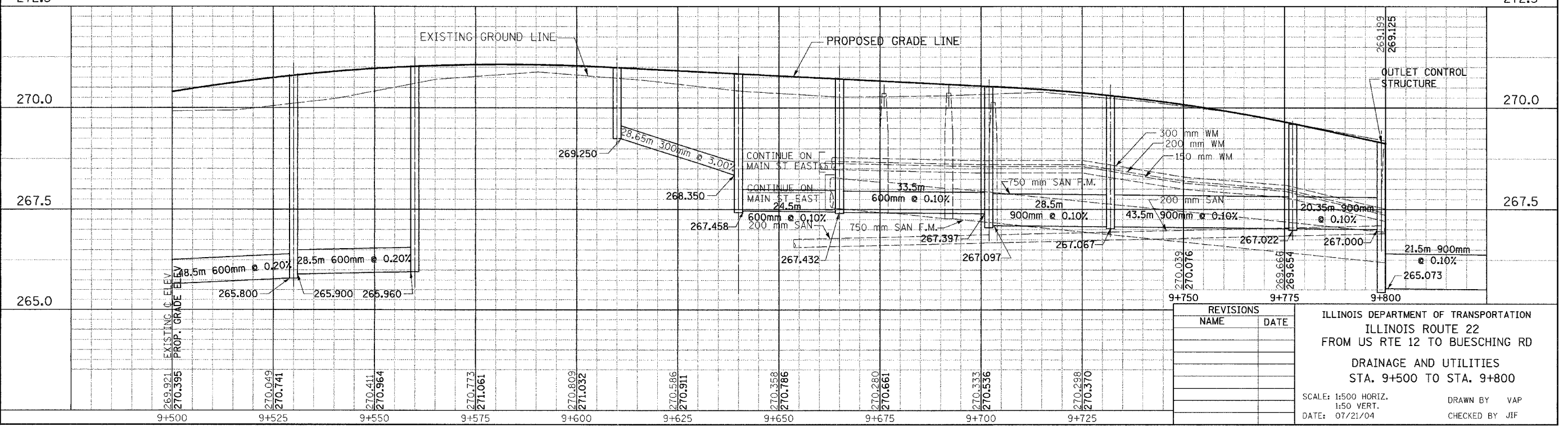
PIPE NO.	K31A	K37A	K47A
SIZE (mm)	300	300	300
LENGTH (m)	4.3	4.3	10.2
TYPE	1	1	1
T.B.F. (CU. M.)	1.10	1.10	2.40

\*WM WATER MAIN REQUIREMENTS



STR. NO.	K31A	K37A	K47A
STA.	9+775.0	9+700.0	9+599.0
OFF. (m)	2.75 RT	2.75LT	2.75LT
TYPE	CB-A	CB-A	INL-A
DIA. (m)	1.2	1.2	0.6
F&G	T-24	T-24	T-24
RIM EL.	269.654	270.536	271.035
INV. N	268.560	269.200	268.560
INV. S			270.000

STR. NO.	J23	J24	J25	J26	J27	J28	K26	K27	K28	K29	K30	K31	K32	K33	K34	K35	K36	K37	K38	K39	K40	K41	K42	K43	K44	K45	K46	K47
STA.	9+530.0	9+530.0	9+530.0	9+560.0	9+560.0	9+560.0	9+799.0	9+797.0	9+797.0	9+777.0	9+775.0	9+775.0	9+732.0	9+730.0	9+730.0	9+702.0	9+700.0	9+700.0	9+682.0	9+665.0	9+665.0	9+665.0	9+640.0	9+640.0	9+625.0	9+610.0	9+610.0	9+610.0
OFF. (m)	13.50 RT	10.35 RT	10.35 LT	13.50 RT	10.35 RT	2.75 LT	11.8	10.35 RT	2.75 LT	11.8RT	10.35 RT	2.75 LT	11.8RT	10.35 RT	2.75 LT	11.8RT	10.35 RT	2.75 RT	22.0 LT	13.60 RT	10.35 RT	2.75 LT	13.60 RT	10.35 RT	13.60 RT	10.35 RT	13.60 RT	2.75 LT
TYPE	MH-A	CB-A	INL-A	MH-A	CB-A	INL-A	MH-A	CB-A	INL-A	MH-A	CB-A	INL-A	MH-A	CB-A	INL-A	MH-A	CB-A	CB-A	MH-A	CB-A	INL-A	MH-A	CB-A	INL-A	MH-A	CB-A	INL-A	MH-A
DIA. (m)	1.5	1.2	0.6	1.5	1.2	0.6	1.5	1.2	0.6	1.5	1.2	0.6	1.5	1.2	0.6	1.5	1.2	1.2	0.6	1.5	1.2	0.6	1.5	1.2	0.6	1.2	0.6	0.6
F&G	T-1-CL	T-24	T-24	T-1-CL	T-24	T-24	T-1-CL	T-24	T-24	T-1-CL	T-24	T-24	T-1-CL	T-24	T-24	T-1-CL	T-24	T-24	T-8	T-1-CL	T-24	T-24	T-1-CL	T-24	T-24	T-24	T-1-CL	T-24
RIM EL.	270.671	270.644	270.753	270.888	270.866	271.018	269.073	269.037	269.189	268.539	269.502	269.654	270.188	270.169	270.321	270.421	270.384	270.536	270.000	268.596	270.559	270.711	270.721	270.684	270.759	270.869	270.834	270.986
INV. N	269.480	269.500		269.860	269.880		268.040	268.080	267.684	268.440	269.440	268.440	268.940	269.180	269.300	269.200	269.040	269.160		269.540	269.580	269.700	269.500	269.500	269.760	269.780	269.900	
INV. S		269.500	269.700	269.860	269.880	270.000	268.040	268.080	268.200	267.684	268.440	268.600	268.940	269.180	269.300	269.200	269.040	269.160		269.540	269.580	269.700	269.500	269.500	269.760	269.780	269.900	
INV. E	265.900						265.073	268.080	268.200	267.022	268.440	268.600	267.067	269.180	269.300	269.200	269.040	269.160		267.432	269.580	269.700	269.500	269.500	269.760	269.780	269.900	
INV. W	265.800			265.960			267.000	268.080	268.200	267.022	268.440	268.600	267.067	269.180	269.300	269.200	269.040	269.160		267.432	269.580	269.700	269.500	269.500	269.760	269.780	269.900	



REVISIONS	
NAME	DATE

ILLINOIS DEPARTMENT OF TRANSPORTATION  
 ILLINOIS ROUTE 22  
 FROM US RTE 12 TO BUESCHING RD  
 DRAINAGE AND UTILITIES  
 STA. 9+500 TO STA. 9+800

SCALE: 1:500 HORIZ.  
 1:50 VERT.  
 DATE: 07/21/04

DRAWN BY VAP  
 CHECKED BY JIF

DATE: \_\_\_\_\_  
 BY: \_\_\_\_\_  
 ORIGINAL SURVEY PLOTTED \_\_\_\_\_  
 SURVEY PLOTTED \_\_\_\_\_  
 NOTE BOOK TEMPLATE \_\_\_\_\_  
 AREAS CHECKED \_\_\_\_\_  
 NO. \_\_\_\_\_

DATE: \_\_\_\_\_  
 BY: \_\_\_\_\_  
 ORIGINAL SURVEY PLOTTED \_\_\_\_\_  
 SURVEY PLOTTED \_\_\_\_\_  
 NOTE BOOK TEMPLATE \_\_\_\_\_  
 AREAS CHECKED \_\_\_\_\_  
 NO. \_\_\_\_\_