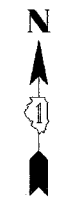


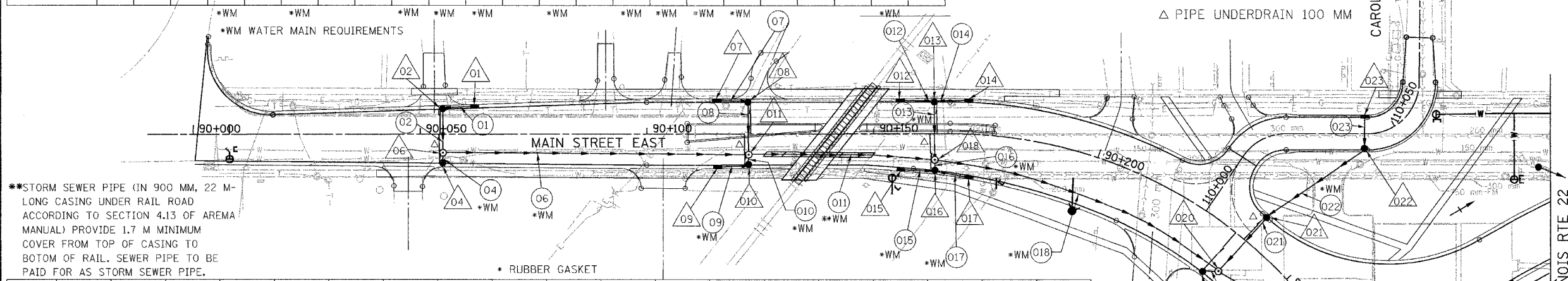
F.A. RTE.	SECTION	COUNTY	TOTAL SHEETS	SHEET NO.
337	19R-1	LAKE	800	276
STA. 90+000		TO STA. 90+280		
FED. ROAD DIST. NO.		ILLINOIS FED. AID PROJECT		

60997

023	110+043	3.6 LT	INL-A	0.6	T-24	269.775	267.873
-----	---------	--------	-------	-----	------	---------	---------



PIPE NO.	01	02	04	06	07	08	09	010	011	012	013	014	015	016	017	018	019	020	021	022	023
SIZE (mm)	300	300	300	450	300	300	300	300	450	300	300	300	300	300	300	450	300	600	375	300	300
LENGTH (m)	6.1	8.4	1.1	66.2	6.5	10.3	6.5	1.1	40.0	6.6	11.5	6.6	6.6	1.1	6.6	72.3	2.7	51.0	15.4	20.4	6.3
T.B.F. (CU. M.)	1	1	1	2	1	1	1	1	2	1	1	1	1	1	1	2	1	3	2	1	1



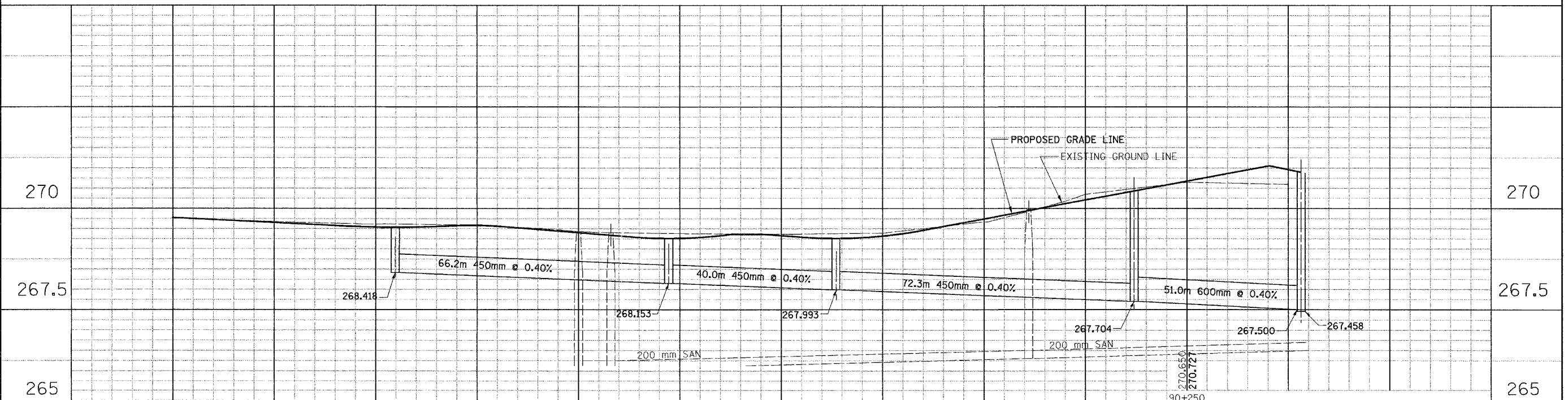
**STORM SEWER PIPE (IN 900 MM, 22 M-LONG CASING UNDER RAIL ROAD ACCORDING TO SECTION 4.13 OF AREMA MANUAL) PROVIDE 1.7 M MINIMUM COVER FROM TOP OF CASING TO BOTOM OF RAIL. SEWER PIPE TO BE PAID FOR AS STORM SEWER PIPE.

STR. NO.	01	02	04	06	07	08	09	010	011	012	013	014	015	016	017	018	019
STA.	90+062.0	90+055.0	90+055.0	90+055.0	90+115.0	90+122.4	90+115.0	90+122.4	90+122.4	90+156.0	90+163.5	90+171.0	90+156.0	90+163.5	90+171.0	90+163.5	90+234.4
OFF. (m)	5.7 LT	5.46 LT	6.46 RT	4.16 RT	6.9 LT	6.9 LT	6.9 RT	6.9 RT	4.6 RT	6.9 LT	6.9 LT	6.9 LT	7.5 RT	8.1 RT	9.1 RT	5.8 RT	11.5 RT
TYPE	INL-A	CB-A	CB-A	MH-A	INL-A	CB-A	INL-A	CB-A	MH-A	INL-A	CB-A	INL-A	INL-A	CB-A	INL-A	MH-A	CB-A
DIA. (m)	0.6	1.2	1.2	1.2	0.6	1.2	0.6	1.2	1.2	0.6	1.2	0.6	0.6	1.2	0.6	1.2	1.2
F&G	T-24	T-24	T-24	T-1-CL	T-24	T-24	T-24	T-24	T-1-CL	T-24	T-24	T-24	T-24	T-24	T-24	T-1-CL	T-24
RIM EL.	269.439	269.435	269.416	269.462	269.153	269.130	269.153	269.130	269.176	269.154	269.130	269.154	269.142	269.106	269.110	269.152	270.160
INV. N			268.416	268.418				268.187	268.153			268.108		268.064	269.110	267.993	267.775
INV. S		268.502	268.429	268.418		268.205		268.176	268.153		268.108		268.130	268.064	269.110	267.993	267.848
INV. E		268.502		268.418	268.250		268.250	268.187	268.153		268.108		268.130	268.064	269.110	267.993	267.848
INV. W	268.538			268.418		268.205		268.187	268.153		268.108		268.130	268.064	269.110	267.993	267.848

020	90+237.0	9.7 RT	MH-A	1.2	T-1-CL	270.195	267.704
021	90+237.0	6.9 LT	CB-A	1.2	T-24	270.300	267.766
022	110+043	3.6 RT	CB-A	1.2	T-24	269.775	267.848

FINAL SURVEY PLOTTED DATE: _____
 ORIGINAL SURVEY PLOTTED DATE: _____
 NOTE BOOK TEMPLATE NO. _____
 AREAS CHECKED: _____

ORIGINAL SURVEY PLOTTED DATE: _____
 ORIGINAL SURVEY PLOTTED DATE: _____
 NOTE BOOK TEMPLATE NO. _____
 AREAS CHECKED: _____



REVISIONS	
NAME	DATE

ILLINOIS DEPARTMENT OF TRANSPORTATION
 ILLINOIS ROUTE 22
 FROM US RTE 12 TO BUESCHING RD
 MAIN ST. EAST/ CAROLYN CT.
 DRAINAGE AND UTILITIES
 STA. 90+000 TO STA. 90+280

SCALE: 1:500 HORIZ.
 1:50 VERT.
 DATE 07/21/04

DRAWN BY VAP
 CHECKED BY JIF

269.774	269.774	269.673	269.649	269.613	269.539	269.585	269.581	269.429	269.400	269.378	269.262	269.364	269.327	269.392	269.317	269.670	269.739	270.351	270.205
90+000	90+025	90+050	90+075	90+100	90+125	90+150	90+175	90+200	90+225	90+250	90+275	90+300	90+325	90+350	90+375	90+400	90+425	90+450	90+475