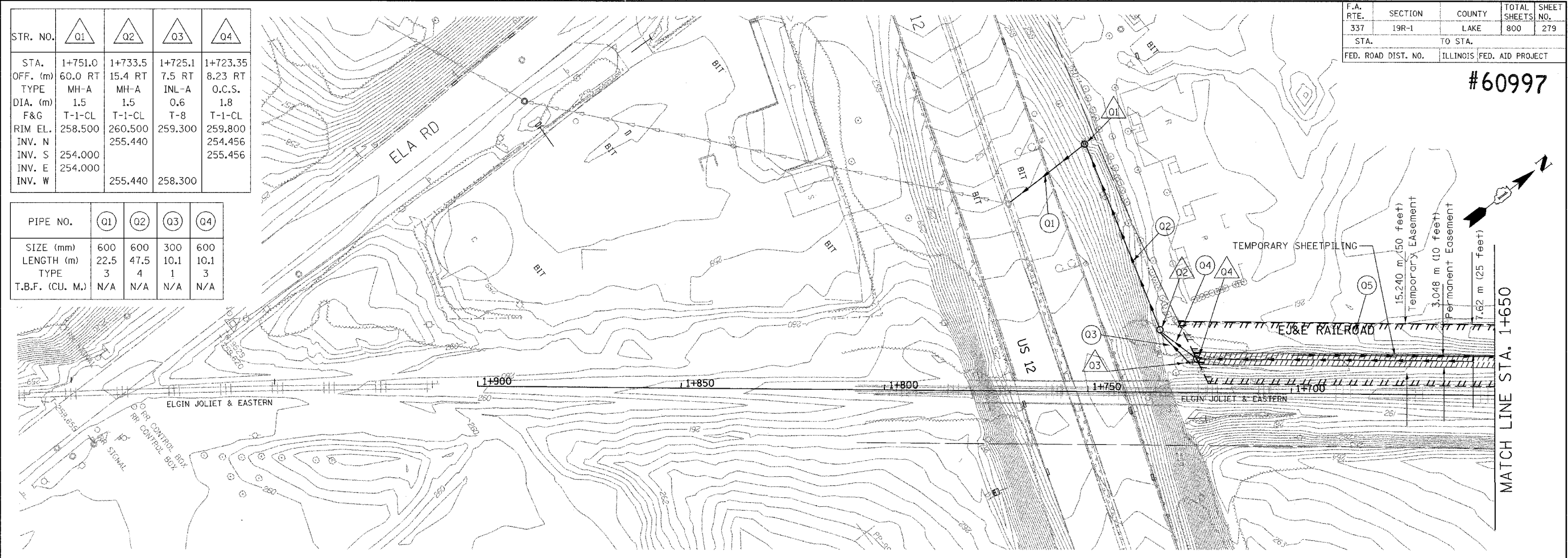


F.A. RTE.	SECTION	COUNTY	TOTAL SHEETS	SHEET NO.
337	19R-1	LAKE	800	279
STA.		TO STA.		
FED. ROAD DIST. NO.		ILLINOIS FED. AID PROJECT		

#60997

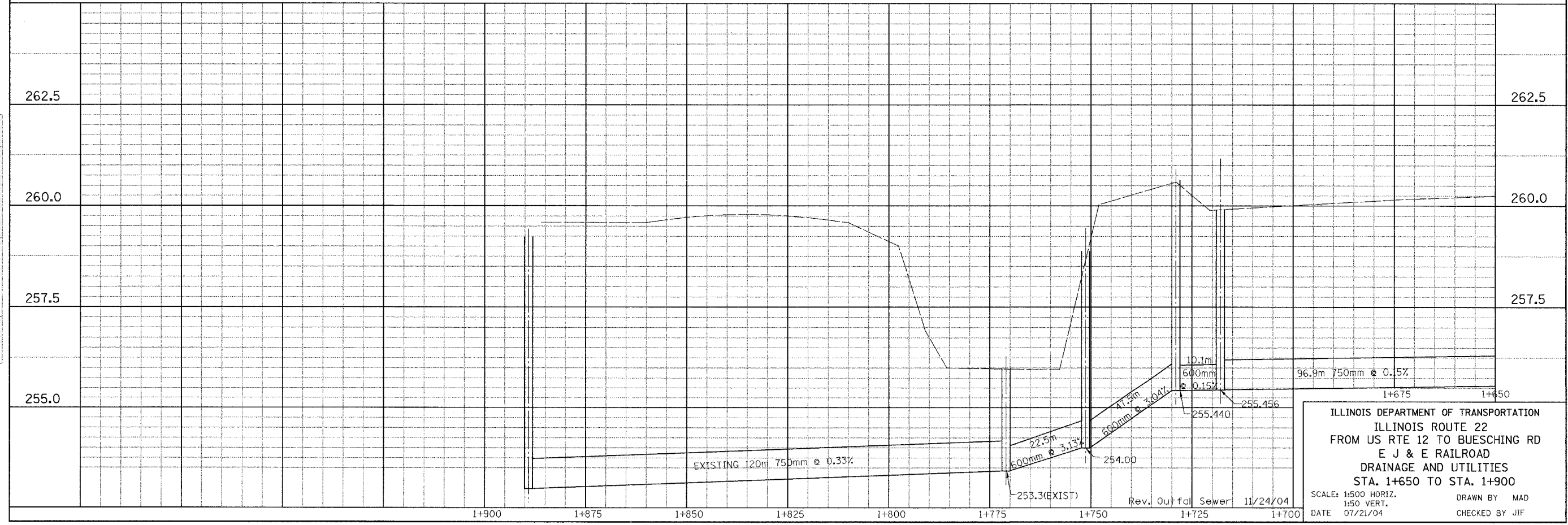
STR. NO.	Q1	Q2	Q3	Q4
STA.	1+751.0	1+733.5	1+725.1	1+723.35
OFF. (m)	60.0 RT	15.4 RT	7.5 RT	8.23 RT
TYPE	MH-A	MH-A	INL-A	O.C.S.
DIA. (m)	1.5	1.5	0.6	1.8
F&G	T-1-CL	T-1-CL	T-8	T-1-CL
RIM EL.	258.500	260.500	259.300	259.800
INV. N		255.440		254.456
INV. S	254.000			
INV. E	254.000			
INV. W		255.440	258.300	

PIPE NO.	Q1	Q2	Q3	Q4
SIZE (mm)	600	600	300	600
LENGTH (m)	22.5	47.5	10.1	10.1
TYPE	3	4	1	3
T.B.F. (CU. M.)	N/A	N/A	N/A	N/A



DATE _____ BY _____
 ORIGINAL SURVEY PLOTTED _____
 NOTE BOOK TEMPLATE _____
 AREAS CHECKED _____

DATE _____ BY _____
 ORIGINAL SURVEY PLOTTED _____
 NOTE BOOK TEMPLATE _____
 AREAS CHECKED _____



ILLINOIS DEPARTMENT OF TRANSPORTATION
 ILLINOIS ROUTE 22
 FROM US RTE 12 TO BUESCHING RD
 E J & E RAILROAD
 DRAINAGE AND UTILITIES
 STA. 1+650 TO STA. 1+900
 SCALE: 1:500 HORIZ.
 1:50 VERT.
 DATE 07/21/04
 DRAWN BY MAD
 CHECKED BY JIF

MATCH LINE STA. 1+650