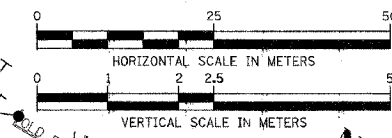
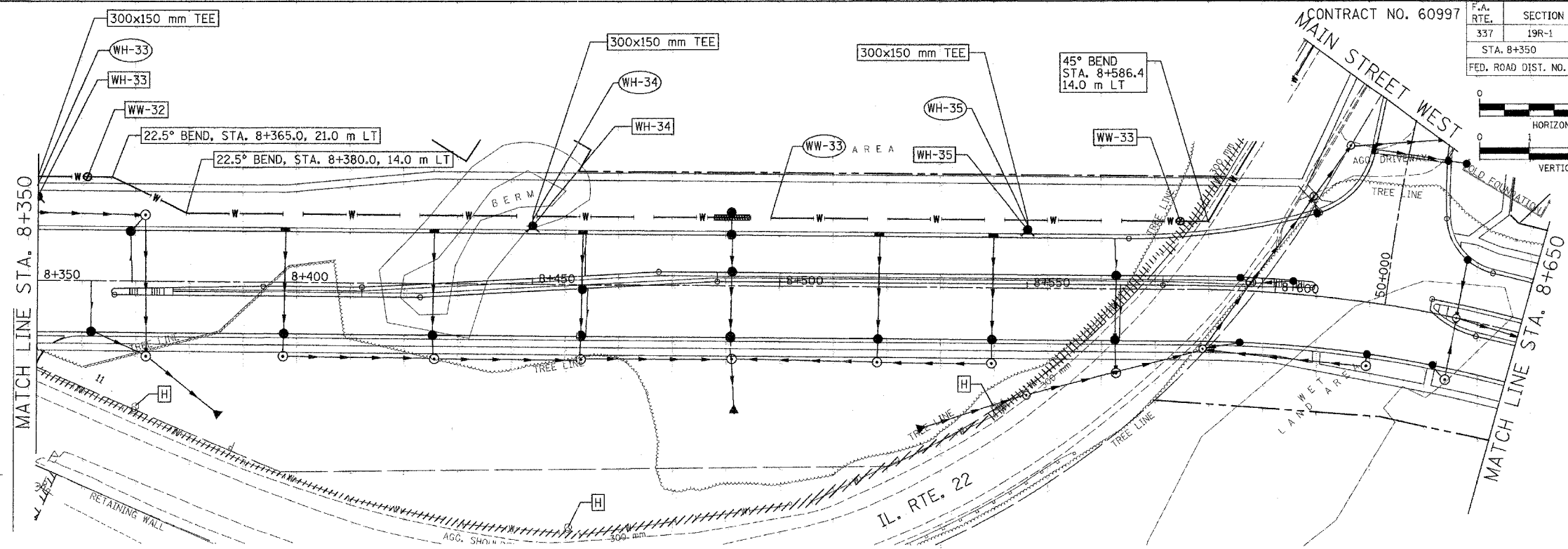


F.A. RTE.	SECTION	COUNTY	TOTAL SHEETS	SHEET NO.
337	19R-1	LAKE	800	362
STA. 8+350		TO STA. 8+650		
FED. ROAD DIST. NO.		ILLINOIS FED. AID PROJECT		

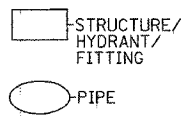


BY	DATE
FINAL SURVEYED	
SURVEY PLOTTED	
NOTE BOOK TEMPLATE	
AREAS CHECKED	
NO.	



**LEGEND**

[H]	FIRE HYDRANT TO BE MOVED
[ADJ]	STRUCTURE TO BE ADJUSTED
[F]	STRUCTURE TO BE FILLED
[R]	STRUCTURE TO BE REMOVED
[REC]	STRUCTURE TO BE RECONSTRUCTED
---	PIPE ABANDONMENT (OR REMOVAL WHERE REQ'D)



**WW-32**  
 WATER VALVE, 300 mm  
 IN VALVE VAULT TY. A,  
 1.5 m DIA. TY. 1 FR & CL  
 STA. 8+360.0, 21.0 m LT  
 RIM=261.53

**WW-33**  
 WATER VALVE, 300 mm  
 IN VALVE VAULT TY. A,  
 1.5 m DIA. TY. 1 FR & CL  
 STA. 8+580.0, 14.0 m LT  
 RIM=261.02

**WH-33**  
 NEW FIRE HYDRANT  
 LOCATION  
 STA. 8+350.0,  
 17.0 m LT

**WH-34**  
 NEW FIRE HYDRANT  
 LOCATION  
 STA. 8+450.0,  
 12.5 m LT

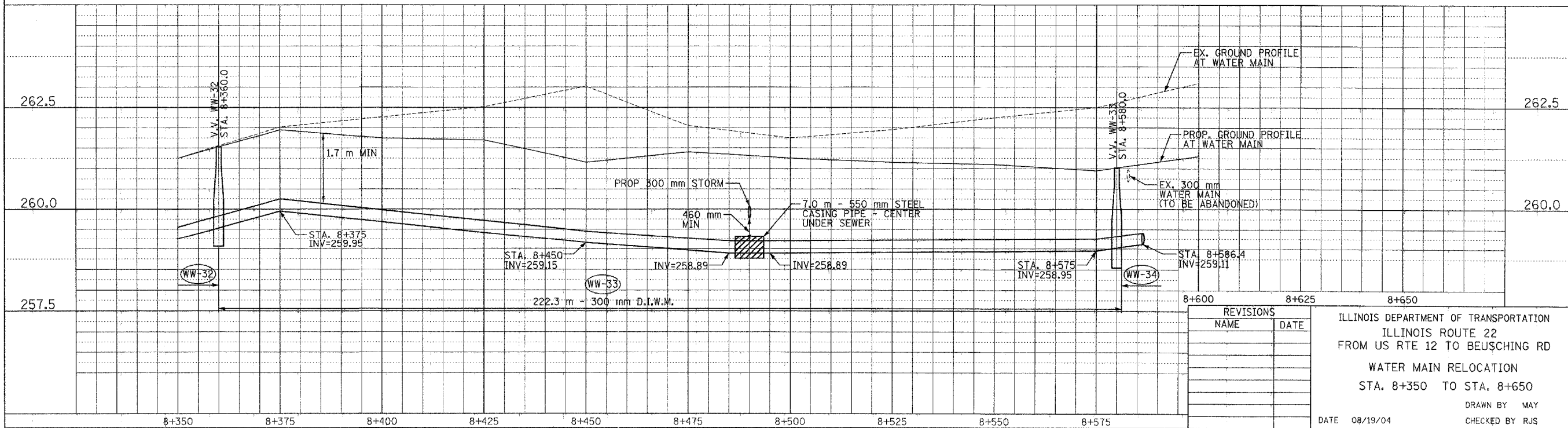
**WH-35**  
 NEW FIRE HYDRANT  
 LOCATION  
 STA. 8+550.0,  
 12.5 m LT

**WH-33**  
 1.5 m - 150 mm DUCT.  
 IRON WATER MAIN

**WH-34**  
 1.5 m - 150 mm DUCT.  
 IRON WATER MAIN

**WH-35**  
 1.5 m - 150 mm DUCT.  
 IRON WATER MAIN

BY	DATE
ORIGINAL SURVEYED	
SURVEY PLOTTED	
NOTE BOOK TEMPLATE	
AREAS CHECKED	
NO.	



REVISIONS	
NAME	DATE

ILLINOIS DEPARTMENT OF TRANSPORTATION  
 ILLINOIS ROUTE 22  
 FROM US RTE 12 TO BEUSHING RD  
 WATER MAIN RELOCATION  
 STA. 8+350 TO STA. 8+650  
 DRAWN BY MAY  
 CHECKED BY RJS  
 DATE 08/19/04