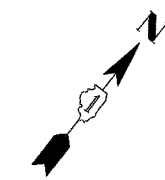
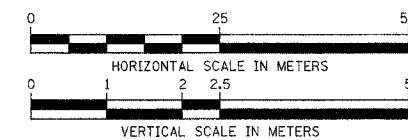
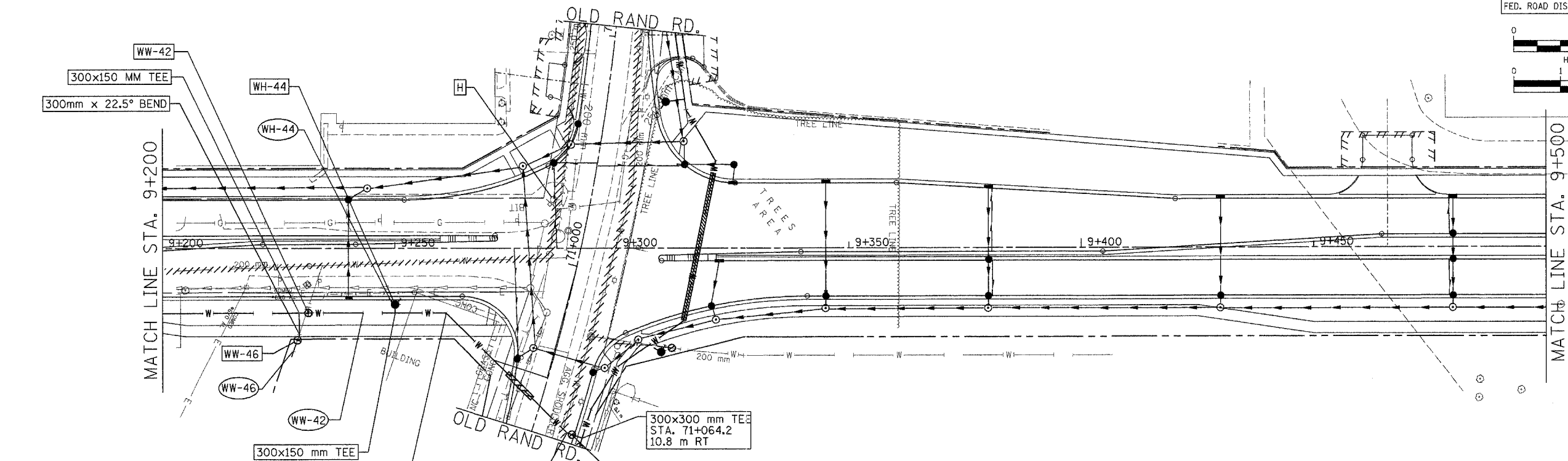


F.A. RTE.	SECTION	COUNTY	TOTAL SHEETS	SHEET NO.
337	19R-1	LAKE	800	364
STA. 9+200		TO STA. 9+500		
FED. ROAD DIST. NO.		ILLINOIS FED. AID PROJECT		



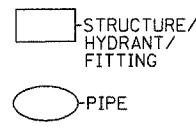
BY	DATE

FINAL SURVEY PLOTTED	
NOTE BOOK TEMPLATE AREAS CHECKED	
NO.	



LEGEND

- [H] FIRE HYDRANT TO BE MOVED
- [ADJ] STRUCTURE TO BE ADJUSTED
- [F] STRUCTURE TO BE FILLED
- [R] STRUCTURE TO BE REMOVED
- [REC] STRUCTURE TO BE RECONSTRUCTED
- PIPE ABANDONMENT (OR REMOVAL WHERE REQ'D)



300mm x 45° BEND
STA. 9+261.0, 14.0 m RT

300mmx22.5° BEND
STA. 9+286.9, 39.9 m RT

300x300 mm TEE
STA. 71+064.2
10.8 m RT

WW-42
WATER VALVE 300MM IN VALVE VAULT, TY. A
1.5 m DIA., TY 1 FR & CL
STA. 9+231.3, 14.0 m RT
RIM=265.32

WW-46
WATER VALVE 150MM IN VALVE VAULT, TY. A
1.2 m DIA., TY 1 FR & CL
STA. 9+229.2, 19.0 m RT

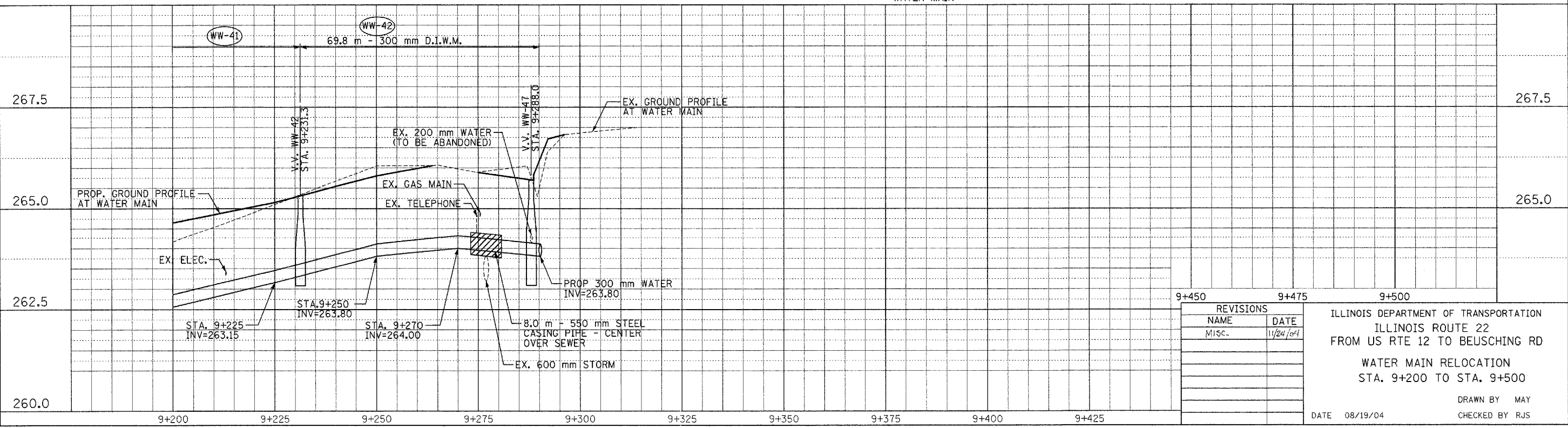
WH-44
NEW FIRE HYDRANT LOCATION
STA. 9+250.0
12.1 m RT

WW-47
WATER VALVE 300MM IN VALVE VAULT, TY. A
1.5 m DIA., TY 1 FR & CL
STA. 70+064.2, 8.5 m RT
RIM=265.82

WW-46
6.0 m - 150 mm DUCT.
IRON WATER MAIN
CONNECT TO EXIST WATER MAIN

WH-44
1.9 m - 150 mm DUCT.
IRON WATER MAIN

NOTES:
1. SEE WATER MAIN RECONSTRUCTION PLAN, STA. 8+950 TO STA. 9+200 FOR SUGGESTED CONSTRUCTION SEQUENCE.



REVISIONS	NAME	DATE
MISC.		11/24/04

ILLINOIS DEPARTMENT OF TRANSPORTATION
ILLINOIS ROUTE 22
FROM US RTE 12 TO BEUSCHING RD
WATER MAIN RELOCATION
STA. 9+200 TO STA. 9+500
DRAWN BY MAY
CHECKED BY RJS
DATE 08/19/04