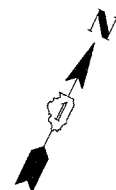
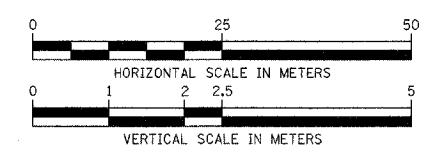
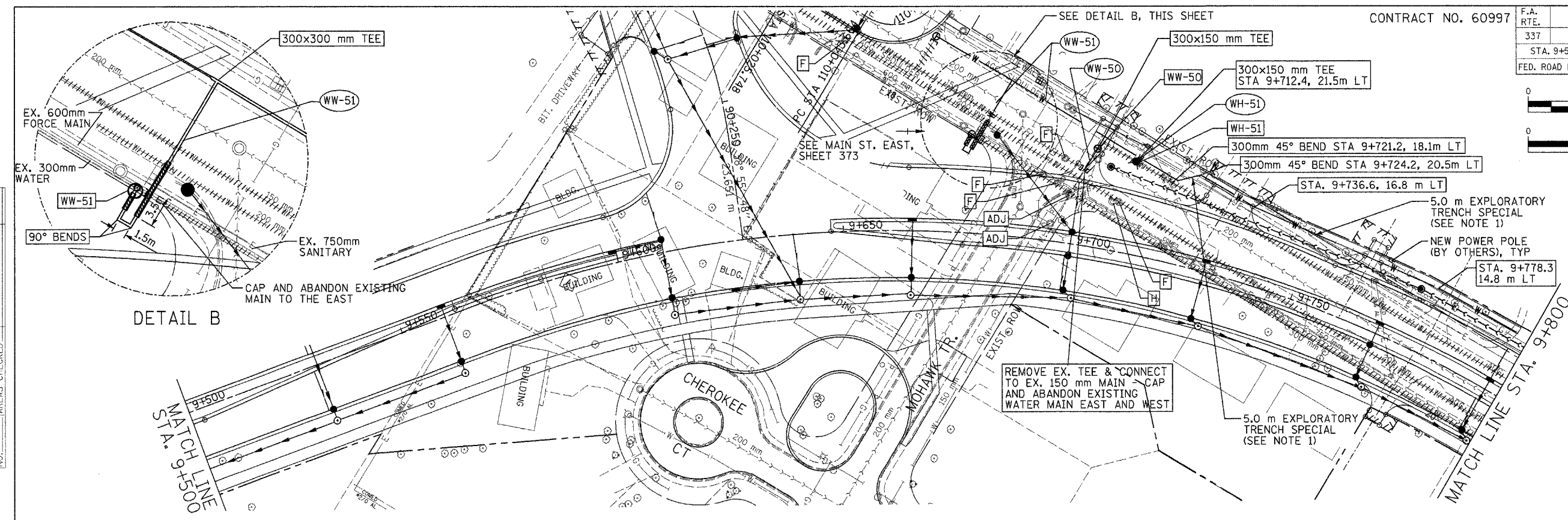


F.A. RTE.	SECTION	COUNTY	TOTAL SHEETS	SHEET NO.
337	19R-1	LAKE	800	365
STA. 9+500 TO STA. 9+800				
FED. ROAD DIST. NO.		ILLINOIS FED. AID PROJECT		



BY	DATE
FINAL SURVEY PLOTTED	
NOTE BOOK TEMPLATE	
AREAS CHECKED	
NO.	



DETAIL B

LEGEND

	FIRE HYDRANT TO BE MOVED
	STRUCTURE TO BE ADJUSTED
	STRUCTURE TO BE FILLED
	STRUCTURE TO BE REMOVED
	STRUCTURE TO BE RECONSTRUCTED
	PIPE ABANDONMENT (OR REMOVAL WHERE REQ'D)

	STRUCTURE/HYDRANT/FITTING
	PIPE

WW-51
TAPPING VALVE & SLEEVE 300MM IN VALVE VAULT, TY. A 1.5 m DIA., TY. 1 FR & CL OFFSET CONE REQ'D STA. 9+677.7, 21.3 m LT RIM=270.45

WW-50
WATER VALVE 150MM IN VALVE VAULT, TY. A 1.2 m DIA., TY. 1 FR & CL STA. 9+6+62.9, 30.4 m LT

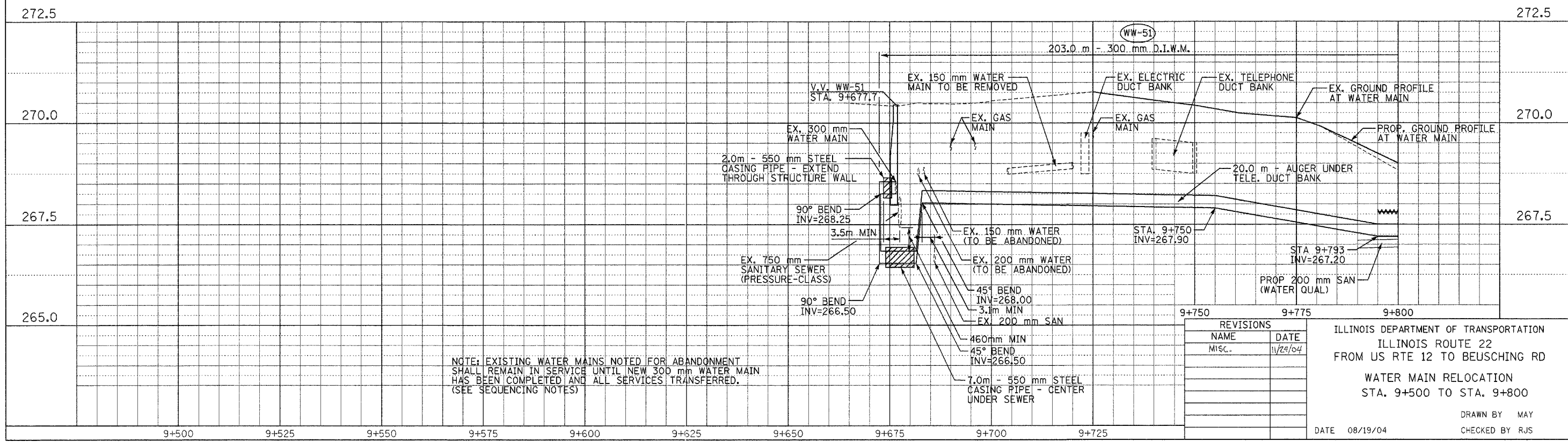
WH-51
NEW FIRE HYDRANT LOCATION STA. 9+711.6, 20.7 m LT

WW-50
7.1 m - 150 mm DUCT. IRON WATER MAIN

WH-51
1.0 m - 150 mm DUCT. IRON WATER MAIN

- NOTES:**
- CONTRACTOR TO VERIFY EXISTING ELECTRIC AND TELEPHONE DUCT BANK LOCATIONS AND ELEVATIONS PRIOR TO CONSTRUCTING WATER MAIN. THIS WORK SHALL BE PAID FOR AS EXPLORATION TRENCH, SPECIAL.
 - SEE WATER MAIN RECONSTRUCTION PLAN, STA. 10+100 TO STA. 10+200 FOR SUGGESTED CONSTRUCTION SEQUENCE.

BY	DATE
ORIGINAL SURVEY PLOTTED	
NOTE BOOK TEMPLATE	
AREAS CHECKED	
NO.	



NOTE: EXISTING WATER MAINS NOTED FOR ABANDONMENT SHALL REMAIN IN SERVICE UNTIL NEW 300 mm WATER MAIN HAS BEEN COMPLETED AND ALL SERVICES TRANSFERRED. (SEE SEQUENCING NOTES)

REVISIONS

NAME	DATE
Misc.	11/24/04

ILLINOIS DEPARTMENT OF TRANSPORTATION
ILLINOIS ROUTE 22
FROM US RTE 12 TO BEUSCHING RD
WATER MAIN RELOCATION
STA. 9+500 TO STA. 9+800

DATE 08/19/04
DRAWN BY MAY
CHECKED BY RJS