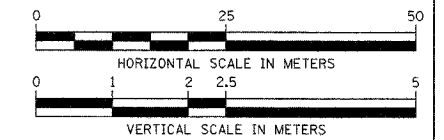


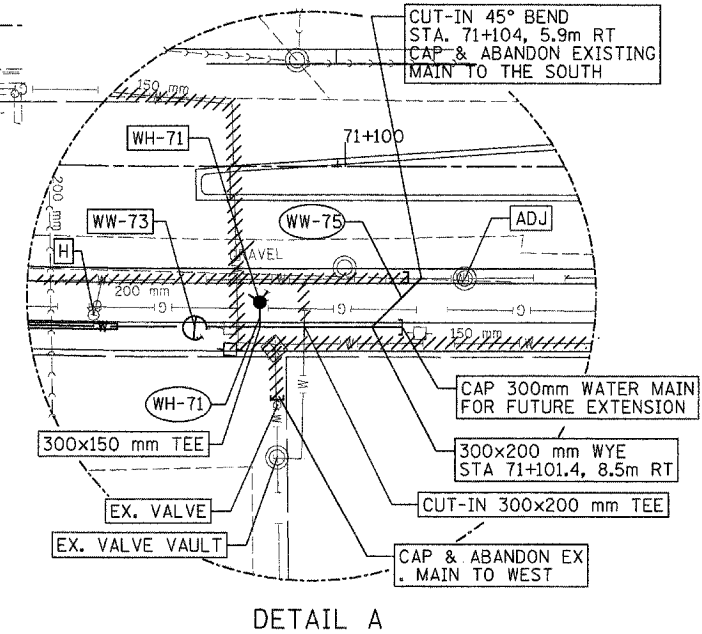
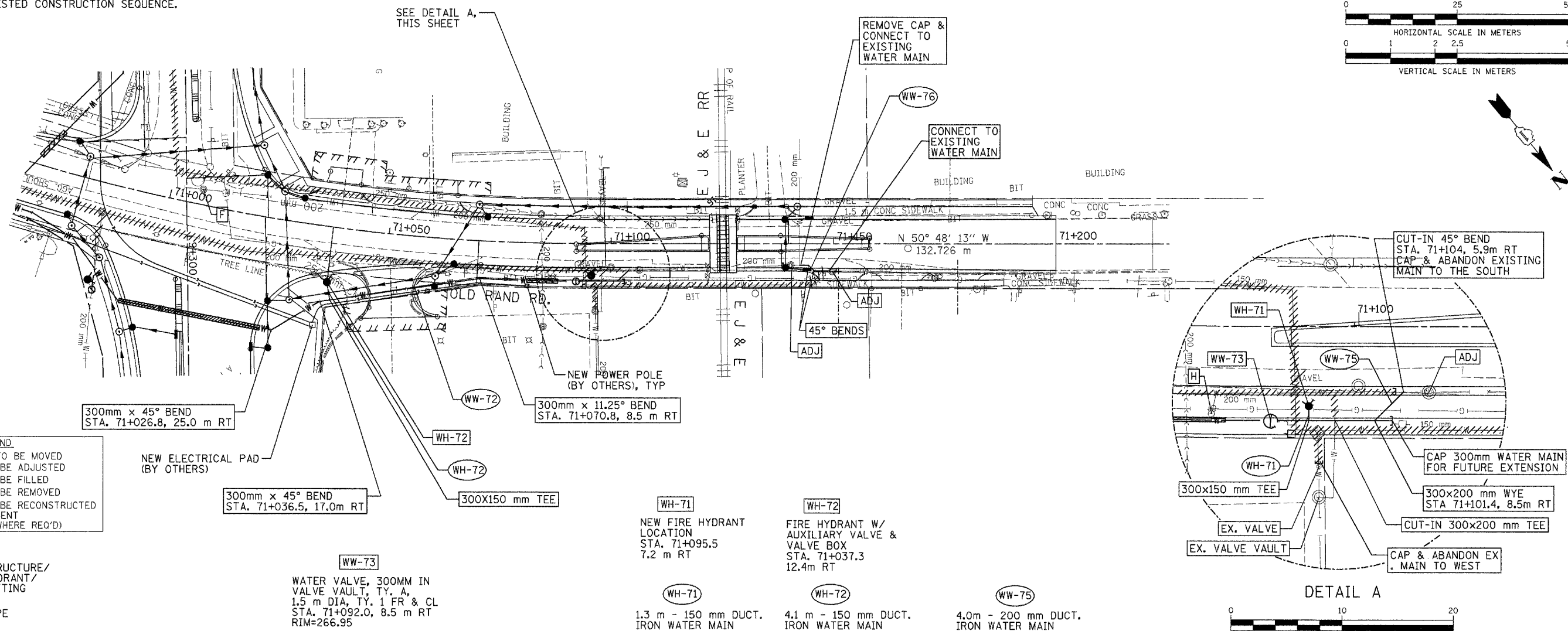
F.A. RTE.	SECTION	COUNTY	TOTAL SHEETS	SHEET NO.
337	19R-1	LAKE	800	372
STA. 71+000		TO STA. 71+200		
FED. ROAD DIST. NO.		ILLINOIS FED. AID PROJECT		

NOTES:

- SEE WATER MAIN RECONSTRUCTION PLAN, STA. 8+950 TO STA. 9+200 ILL. RTE 22 FOR SUGGESTED CONSTRUCTION SEQUENCE.

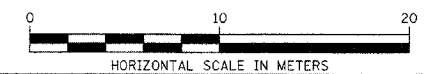
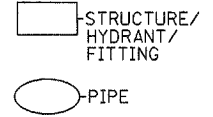


DATE	
BY	
ORIGINAL SURVEY PLOTTED	
NOTE BOOK	
AREAS CHECKED	
NO.	

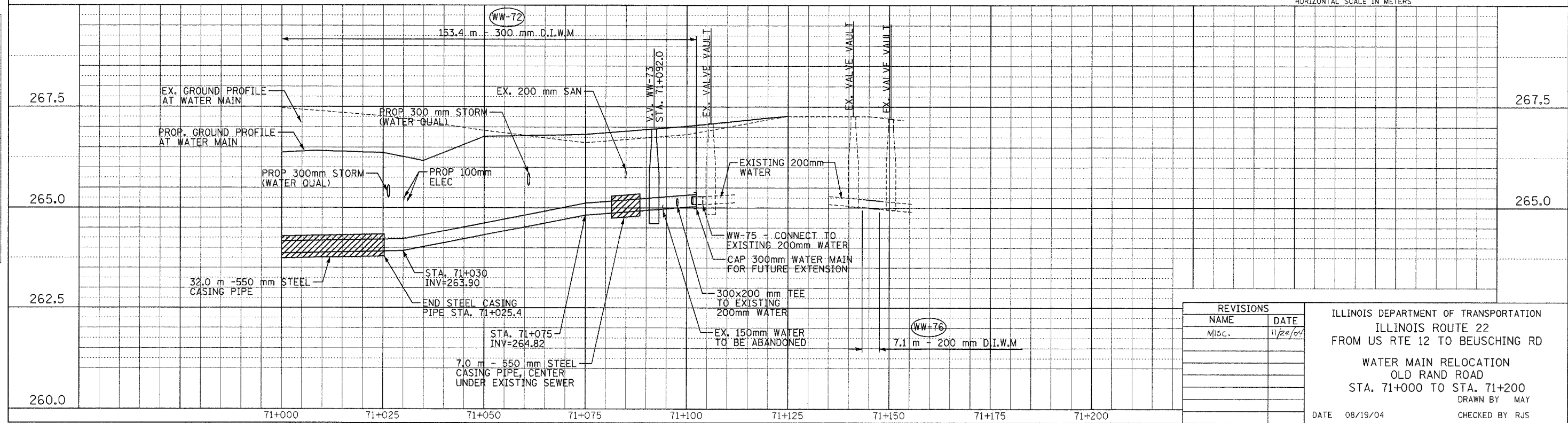


LEGEND

[H]	FIRE HYDRANT TO BE MOVED
[ADJ]	STRUCTURE TO BE ADJUSTED
[F]	STRUCTURE TO BE FILLED
[R]	STRUCTURE TO BE REMOVED
[REC]	STRUCTURE TO BE RECONSTRUCTED
[---]	PIPE ABANDONMENT (OR REMOVAL WHERE REQ'D)



DATE	
BY	
ORIGINAL SURVEY PLOTTED	
NOTE BOOK	
AREAS CHECKED	
NO.	



REVISIONS	
NAME	DATE
Misc.	11/22/04

ILLINOIS DEPARTMENT OF TRANSPORTATION
 ILLINOIS ROUTE 22
 FROM US RTE 12 TO BEUSCHING RD
 WATER MAIN RELOCATION
 OLD RAND ROAD
 STA. 71+000 TO STA. 71+200
 DRAWN BY MAY
 DATE 08/19/04 CHECKED BY RJS