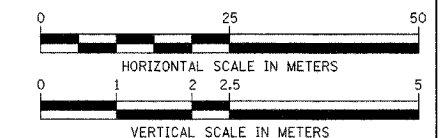


F.A. RTE.	SECTION	COUNTY	TOTAL SHEETS	SHEET NO.
337	19R-1	LAKE	800	378
STA. 7+500		TO STA. 7+750		
FED. ROAD DIST. NO.		ILLINOIS FED. AID PROJECT		

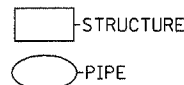


NOTES:

- TEMPORARY SEWER WS-13 SHALL BE INSTALLED FROM EXISTING MH WS-13 TO NEW MH WS-10 AFTER PERMANENT SEWER DOWNSTREAM OF WS-10 HAS BEEN CONSTRUCTED. THIS SEWER SHALL REMAIN IN PLACE UNTIL NEW SEWER HAS BEEN CONNECTED AT STA 8+109. AT THAT TIME, THE TEMPORARY SEWER SHALL BE PLUGGED AND ABANDONED AND EX. MH WS-13 FILLED.
- TEMPORARY BYPASS PUMPING SHALL BE REQUIRED FROM THE EX. MH AT STA. 7+665, 16 m RT TO THE EX MH AT STA. 7+566, 11 m RT WHILE THE NEW SEWER IS CONSTRUCTED FROM MH WS-06 TO MH WS-10. THIS BYPASS PUMPING SHALL BE INCIDENTAL TO THE COST OF THE SEWER.

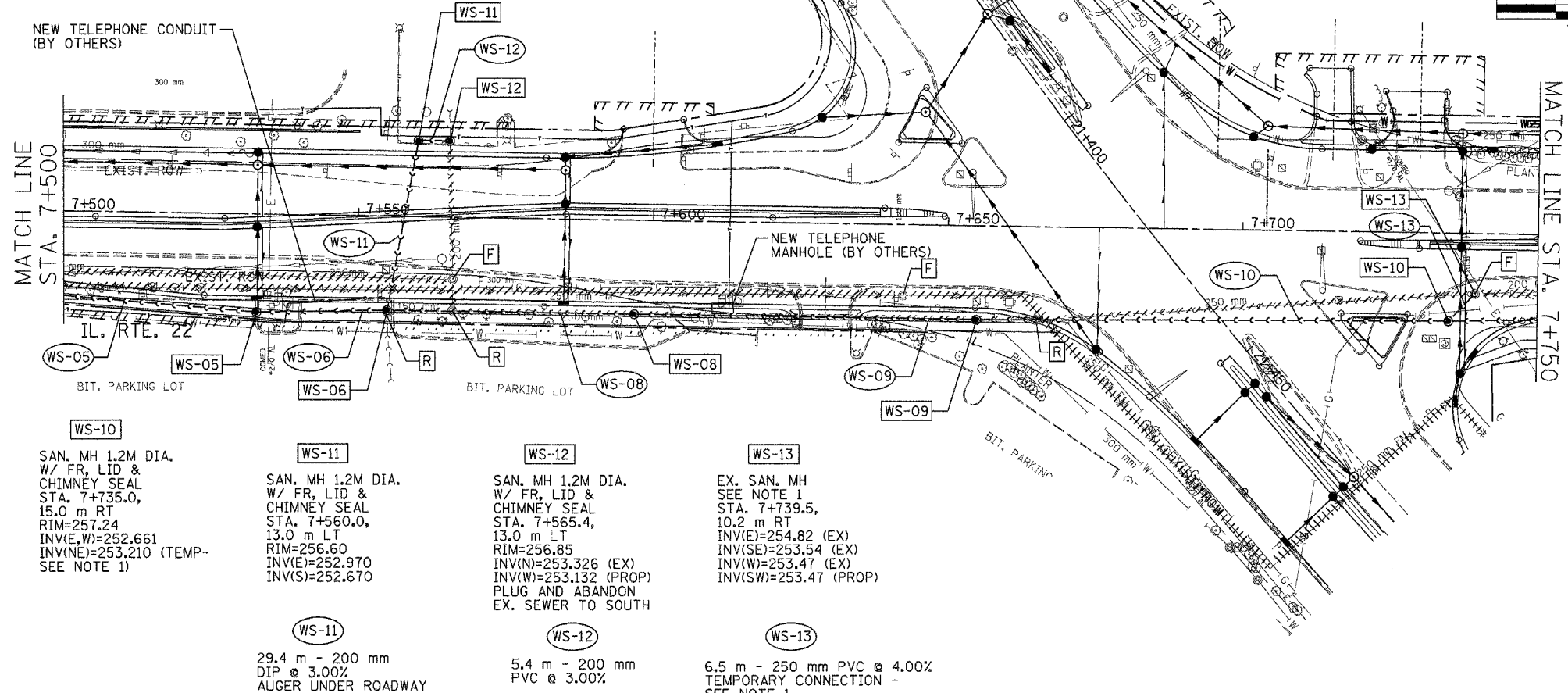
LEGEND

[AD]	STRUCTURE TO BE ADJUSTED
[F]	STRUCTURE TO BE FILLED
[R]	STRUCTURE TO BE REMOVED
[REC]	STRUCTURE TO BE RECONSTRUCTED
	PIPE ABANDONMENT (OR REMOVAL WHERE REQ'D)



DATE	
BY	
FINAL SURVEY PLOTTED	
NOTE BOOK TEMPLATE	
AREAS CHECKED	
NO.	

DATE	
BY	
ORIGINAL SURVEY PLOTTED	
NOTE BOOK TEMPLATE	
AREAS CHECKED	
NO.	



WS-05
 DROP SAN. MH 1.2M DIA.
 W/ FR, LID & CHIMNEY SEAL
 STA. 7+533.0,
 16.7 m RT
 RIM=255.62
 INV(E)=251.246 (DROP CONN)
 INV(W)=247.987

WS-08
 SAN. MH 1.2M DIA.
 W/ FR, LID & CHIMNEY SEAL
 STA. 7+597.0,
 16.0 m RT
 RIM=257.95
 INV(E,W)=251.971

WS-10
 SAN. MH 1.2M DIA.
 W/ FR, LID & CHIMNEY SEAL
 STA. 7+735.0,
 15.0 m RT
 RIM=257.24
 INV(E,W)=252.661
 INV(N)=253.210 (TEMP-SEE NOTE 1)

WS-11
 SAN. MH 1.2M DIA.
 W/ FR, LID & CHIMNEY SEAL
 STA. 7+560.0,
 13.0 m LT
 RIM=256.60
 INV(E)=252.970
 INV(S)=252.670

WS-12
 SAN. MH 1.2M DIA.
 W/ FR, LID & CHIMNEY SEAL
 STA. 7+565.4,
 13.0 m LT
 RIM=256.85
 INV(N)=253.326 (EX)
 INV(W)=253.132 (PROP)
 PLUG AND ABANDON EX. SEWER TO SOUTH

WS-13
 EX. SAN. MH
 SEE NOTE 1
 STA. 7+739.5,
 10.2 m RT
 INV(E)=254.82 (EX)
 INV(S)=253.54 (EX)
 INV(W)=253.47 (EX)
 INV(SW)=253.47 (PROP)

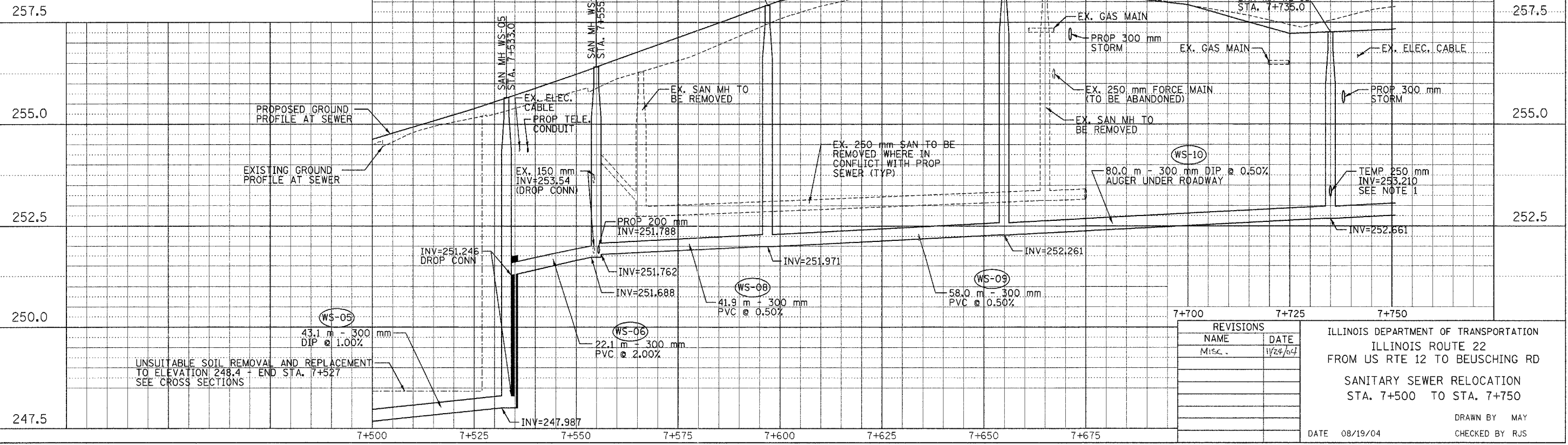
WS-06
 DROP SAN. MH 1.2M DIA.
 W/ FR, LID & CHIMNEY SEAL
 STA. 7+555.1, 16.0 m RT
 RIM=256.39
 INV(N)=251.788 (PROP)
 INV(S)=253.54
 (EX-DROP CONN)
 INV(E)=251.762 (PROP)
 INV(W)=251.688 (PROP)
 REMOVE AND REPLACE EX. MH AT SAME LOCATION

WS-09
 SAN. MH 1.2M DIA.
 W/ FR, LID & CHIMNEY SEAL
 STA. 7+655.0,
 16.0 m RT
 RIM=258.48
 INV(E,W)=252.261

WS-11
 29.4 m - 200 mm
 DIP @ 3.00%
 AUGER UNDER ROADWAY

WS-12
 5.4 m - 200 mm
 PVC @ 3.00%

WS-13
 6.5 m - 250 mm PVC @ 4.00%
 TEMPORARY CONNECTION - SEE NOTE 1



REVISIONS

NAME	DATE
Misc.	11/24/04

ILLINOIS DEPARTMENT OF TRANSPORTATION
 ILLINOIS ROUTE 22
 FROM US RTE 12 TO BEUSCHING RD
 SANITARY SEWER RELOCATION
 STA. 7+500 TO STA. 7+750
 DATE 08/19/04
 DRAWN BY MAY
 CHECKED BY RJS