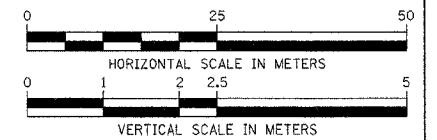
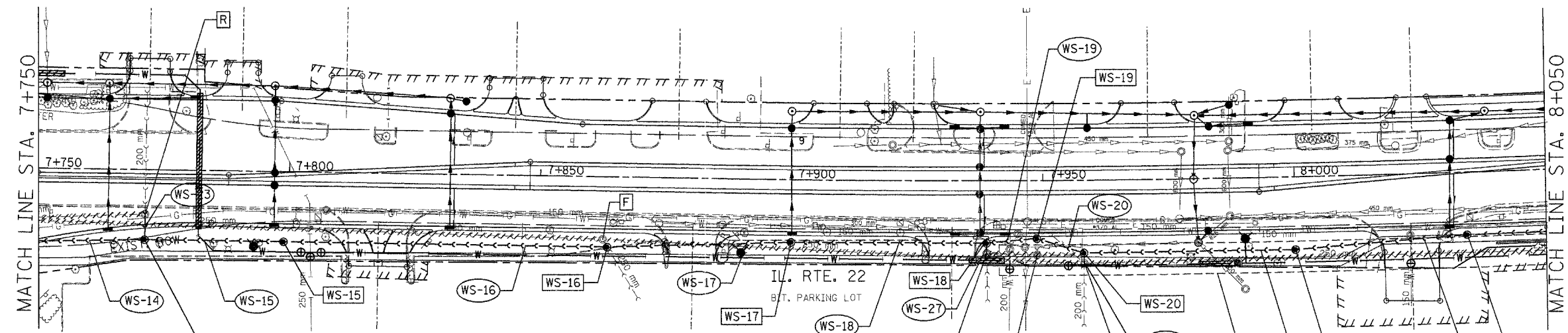


F.A. RTE.	SECTION	COUNTY	TOTAL SHEETS	SHEET NO.
337	19R-1	LAKE	800	379
STA. 7+750		TO STA. 8+050		
FED. ROAD DIST. NO.		ILLINOIS FED. AID PROJECT		

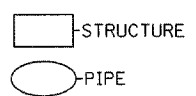


DATE	BY



LEGEND

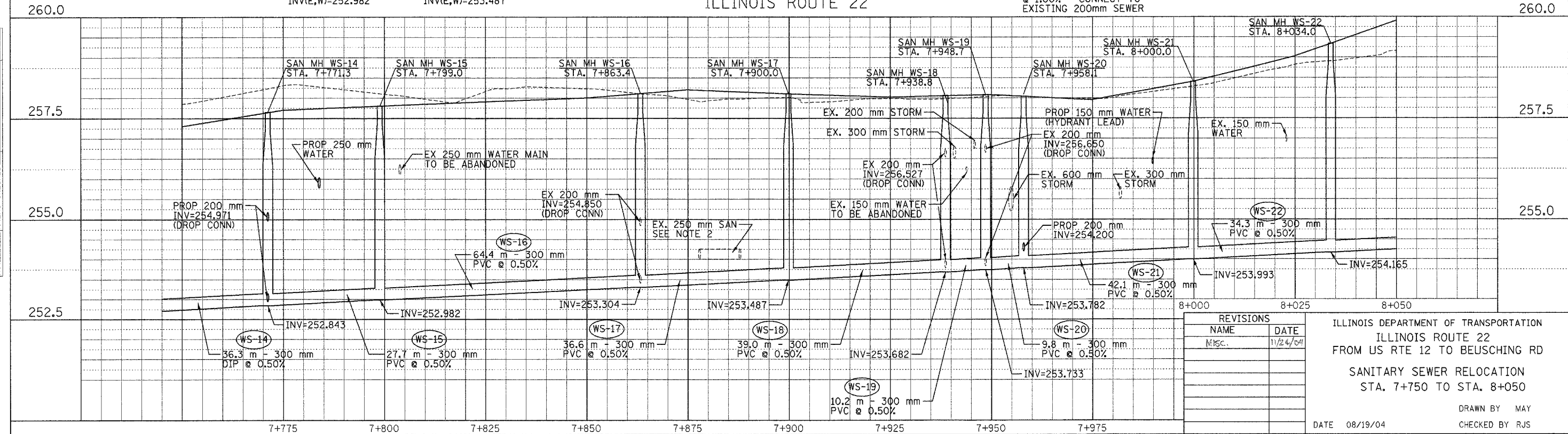
[ADJ]	STRUCTURE TO BE ADJUSTED
[F]	STRUCTURE TO BE FILLED
[R]	STRUCTURE TO BE REMOVED
[REC]	STRUCTURE TO BE RECONSTRUCTED
----	PIPE ABANDONMENT (OR REMOVAL WHERE REQ'D)



WS-14 DROP SAN. MH 1.2M DIA. W/ FR, LID & CHIMNEY SEAL STA. 7+771.3, 14.0 m RT RIM=257.64 INV(N)=254.971 (DROP CONN) INV(E,W)=252.843	WS-15 SAN. MH 1.2M DIA. W/ FR, LID & CHIMNEY SEAL STA. 7+799.0, 14.0 m RT RIM=257.80 INV(E,W)=252.982	WS-16 DROP SAN. MH 1.2M DIA. W/ FR, LID & CHIMNEY SEAL STA. 7+863.4 14.0 m RT RIM=258.11 INV(S)=254.850 (EX-DROP CONN) INV(E,W)=253.304	WS-17 SAN. MH 1.2M DIA. W/ FR, LID & CHIMNEY SEAL STA. 7+900.0, 12.5 m RT RIM=258.10 INV(E,W)=253.487	WS-18 DROP SAN. MH 1.2M DIA. W/ FR, LID & CHIMNEY SEAL STA. 7+938.8 12.5 m RT RIM=258.07 INV(S)=256.527 (EX-DROP CONN) INV(E,W)=253.682	WS-19 DROP SAN. MH 1.2M DIA. W/ FR, LID & CHIMNEY SEAL STA. 7+948.7 11.6 m RT RIM=258.04 INV(N)=256.65 (EX-DROP CONN) INV(E,W)=253.733	WS-20 SAN. MH 1.2M DIA. W/ FR, LID & CHIMNEY SEAL STA. 7+958.1 14.5 m RT RIM=258.04 INV(S)=254.200 INV(E,W)=253.782	WS-21 SAN. MH 1.2M DIA. W/ FR, LID & CHIMNEY SEAL STA. 8+000.0 14.5 m RT RIM=258.40 INV(E,W)=253.993	WS-22 SAN. MH 1.2M DIA. W/ FR, LID & CHIMNEY SEAL STA. 8+034.0, 12.5 m RT RIM=259.34 INV(E,W)=254.165	WS-23 5.9 m - 200 mm DIP @ 1.00% - CONNECT TO EXISTING 200mm SEWER	WS-24 3.0 m - 200 mm PVC @ 1.00% - CONNECT TO EXISTING 200 mm SEWER	WS-27 3.3 m - 200 mm PVC @ 1.00% - CONNECT TO EXISTING 200mm SEWER
--	--	--	--	--	---	---	---	--	--	---	--

- NOTES:**
- PROPOSED WATER MAIN RELOCATION FROM STA. 7+805 TO STA. 8+115 SHALL BE CONSTRUCTED PRIOR TO CONSTRUCTING PROPOSED SANITARY SEWER FROM STA. 7+739 TO STA 8+109
 - EXISTING 250 mm SANITARY SEWER SHALL REMAIN IN SERVICE FROM EX MH WS-13 TO EX MH WS-26 UNTIL NEW SEWER HAS BEEN COMPLETED. SEWER SHALL THEN BE PLUGGED AND ABANDONED, AND MANHOLES FILLED AS INDICATED.

DATE	BY



REVISIONS	
NAME	DATE
Misc.	11/24/04

ILLINOIS DEPARTMENT OF TRANSPORTATION
ILLINOIS ROUTE 22
FROM US RTE 12 TO BEUSCHING RD
SANITARY SEWER RELOCATION
STA. 7+750 TO STA. 8+050

DATE 08/19/04
DRAWN BY MAY
CHECKED BY RJS