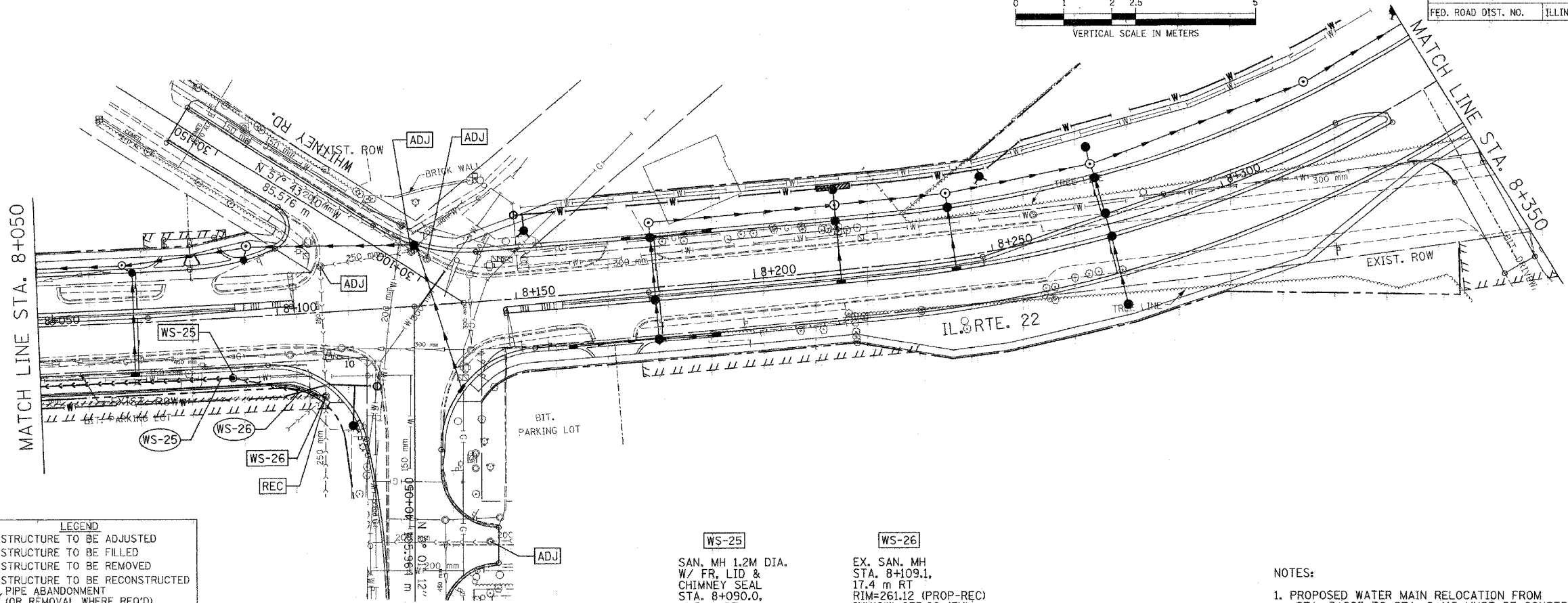


CONTRACT NO. 60997

| F.A. RTE. | SECTION | COUNTY | TOTAL SHEETS | SHEET NO. |
|---------------------|---------|---------------------------|--------------|-----------|
| 337 | 19R-1 | LAKE | 800 | 380 |
| STA. 8+050 | | TO STA. 8+350 | | |
| FED. ROAD DIST. NO. | | ILLINOIS FED. AID PROJECT | | |

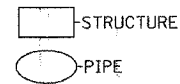
| BY | DATE |
|----|------|
| | |
| | |

FINAL SURVEY PLOTTED
NOTE BOOK TEMPLATE AREAS CHECKED



LEGEND

| | |
|------|-------------------------------------------|
| ADJ | STRUCTURE TO BE ADJUSTED |
| F | STRUCTURE TO BE FILLED |
| R | STRUCTURE TO BE REMOVED |
| REC | STRUCTURE TO BE RECONSTRUCTED |
| ---- | PIPE ABANDONMENT (OR REMOVAL WHERE REQ'D) |



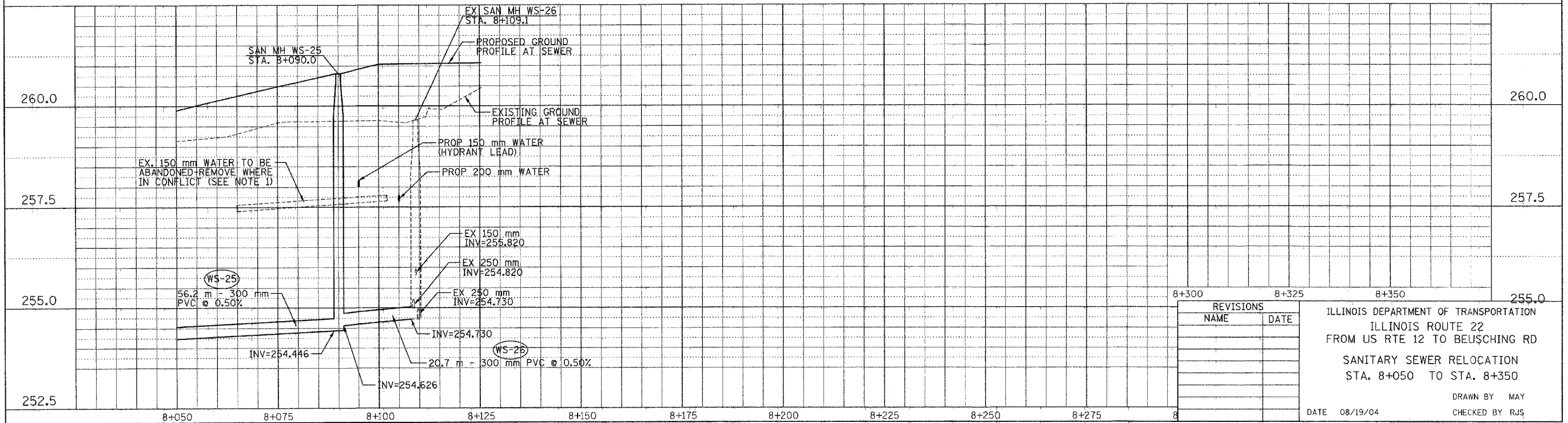
WS-25
SAN. MH 1.2M DIA.
W/ FR, LID & CHIMNEY SEAL
STA. 8+090.0,
12.5 m RT
RIM=260.80
INV(W)=254.446
INV(E)=254.626

WS-26
EX. SAN. MH
STA. 8+109.1,
17.4 m RT
RIM=261.12 (PROP-REC)
INV(SW)=255.82 (EX)
INV(N)=254.97 (EX)
INV(S)=254.73 (EX)
INV(NW)=254.73 (PROP)
PLUG AND ABANDON
EX. SEWER TO WEST

- NOTES:**
- PROPOSED WATER MAIN RELOCATION FROM STA. 7+805 TO STA. 8+115 MUST BE CONSTRUCTED PRIOR TO PROPOSED SANITARY SEWER FROM STA. 7+739 TO STA. 8+109.
 - EXISTING 250 mm SANITARY SEWER SHALL REMAIN IN SERVICE FROM EX MH WS-13 TO EX MH WS-26 UNTIL NEW SEWER HAS BEEN COMPLETED. SEWER SHALL THEN BE PLUGGED AND ABANDONED, AND MANHOLES FILLED AS INDICATED.

| BY | DATE |
|----|------|
| | |
| | |

ORIGINAL SURVEY PLOTTED
NOTE BOOK TEMPLATE AREAS CHECKED



| REVISIONS | | NAME | DATE |
|-----------|-------------|------|------|
| NO. | DESCRIPTION | | |
| | | | |
| | | | |

ILLINOIS DEPARTMENT OF TRANSPORTATION
ILLINOIS ROUTE 22
FROM US RTE 12 TO BEUSCHING RD
SANITARY SEWER RELOCATION
STA. 8+050 TO STA. 8+350

DATE 08/19/04
DRAWN BY MAY
CHECKED BY RJS