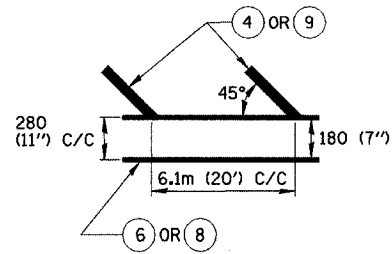
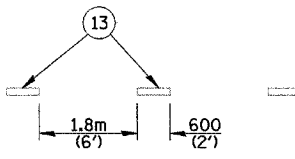


F.A. RTE.	SECTION	COUNTY	TOTAL SHEETS	SHEET NO.
337	19R-1	LAKE	800	403
STA. 50+000 TO STA. 50+279.28				
FED. ROAD DIST. NO.		ILLINOIS FED. AID PROJECT		

#60997



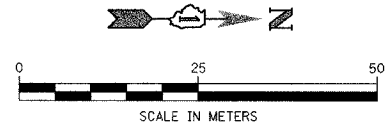
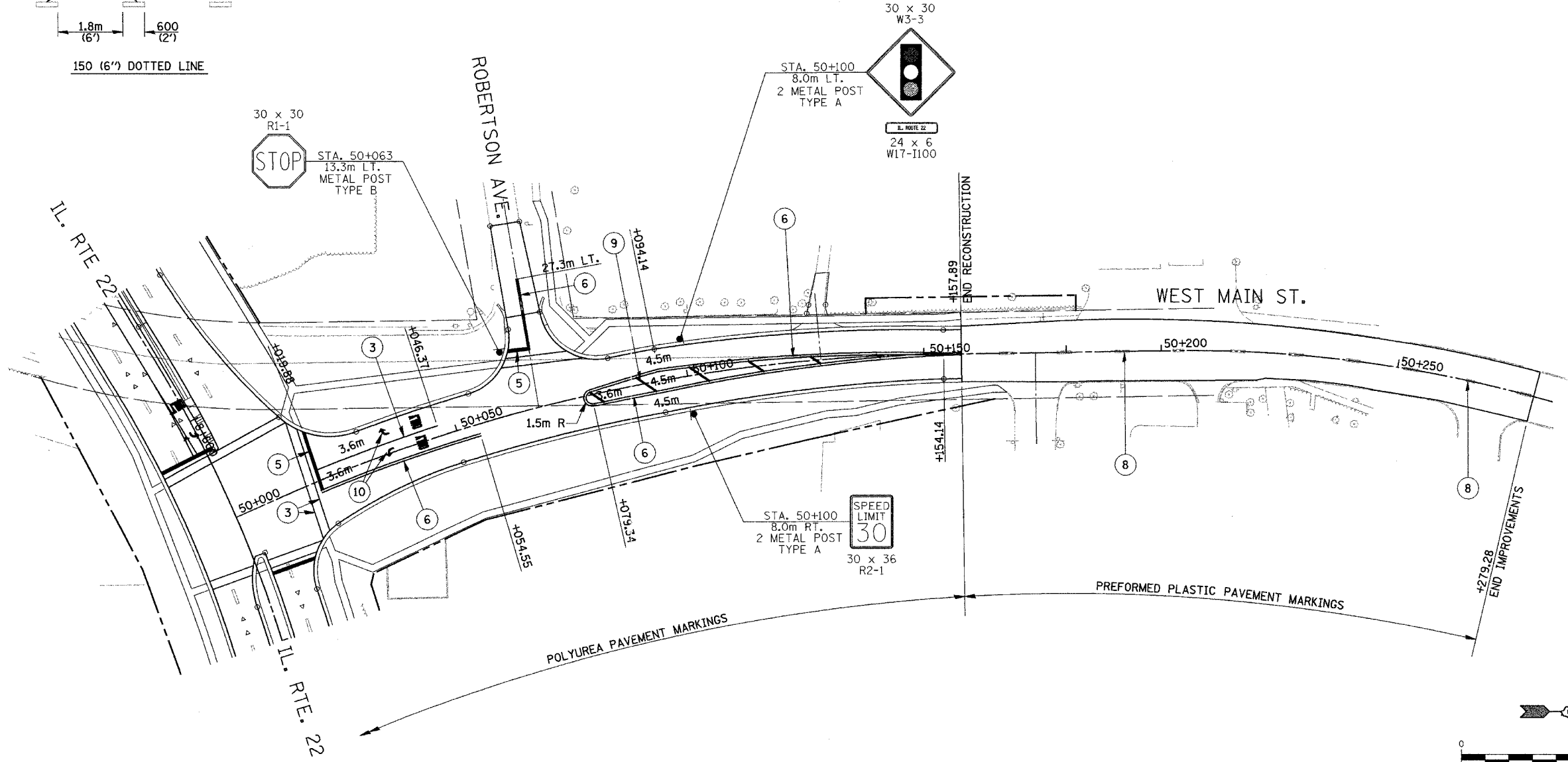
300 (12") DIAGONAL LINE AND 100 (4") DOUBLE LINE



150 (6") DOTTED LINE

LEGEND FOR PAVEMENT MARKING

- ① PAVEMENT MARKING LINE 100mm (WHITE)
- ② PAVEMENT MARKING LINE 100mm (WHITE, 3m-DASH, 9m-SKIP)
- ③ PAVEMENT MARKING LINE 150mm (WHITE)
- ④ PAVEMENT MARKING LINE 300mm (WHITE)
- ⑤ PAVEMENT MARKING LINE 600mm (WHITE)
- ⑥ PAVEMENT MARKING LINE 100mm (YELLOW, 2-100mm @ 280mm C/C)
- ⑦ PAVEMENT MARKING LINE 100mm (YELLOW SOLID)
- ⑧ PAVEMENT MARKING LINE 100mm (YELLOW, 3m-DASH, 9m-SKIP)
- ⑨ PAVEMENT MARKING LINE 300mm (YELLOW)
- ⑩ PAVEMENT MARKING LETTERS AND SYMBOLS (WHITE)
- ⑪ RAISED REFLECTIVE PAVEMENT MARKERS ONE WAY CRYSTAL MARKER
- ⑫ RAISED REFLECTIVE PAVEMENT MARKERS TWO WAY AMBER MARKER
- ⑬ PAVEMENT MARKING LINE 150mm (WHITE, 0.6m-DASH, 1.8m-SKIP)
- ⑭ RAISED REFLECTIVE PAVEMENT MARKERS ONE WAY AMBER MARKER
- ⑮ PAVEMENT MARKING LINE 150mm (YELLOW, 0.6m-DASH, 1.8m-SKIP)
- ⑯ PAVEMENT MARKING LINE 200mm (WHITE)



REVISIONS	
NAME	DATE
REVISOR	11/24/04
TITLE BLOCK	
TO INCLUDE SIGNING PLANS	

ILLINOIS DEPARTMENT OF TRANSPORTATION  
 ILLINOIS ROUTE 22  
 FROM US RTE 12 TO BUESCHING RD  
 PAVEMENT MARKING AND SIGNING PLANS  
 WEST MAIN STREET

SCALE :  
 DATE : 07/21/04  
 DESIGNED BY J.T.M.  
 CHECKED BY J.M.C.