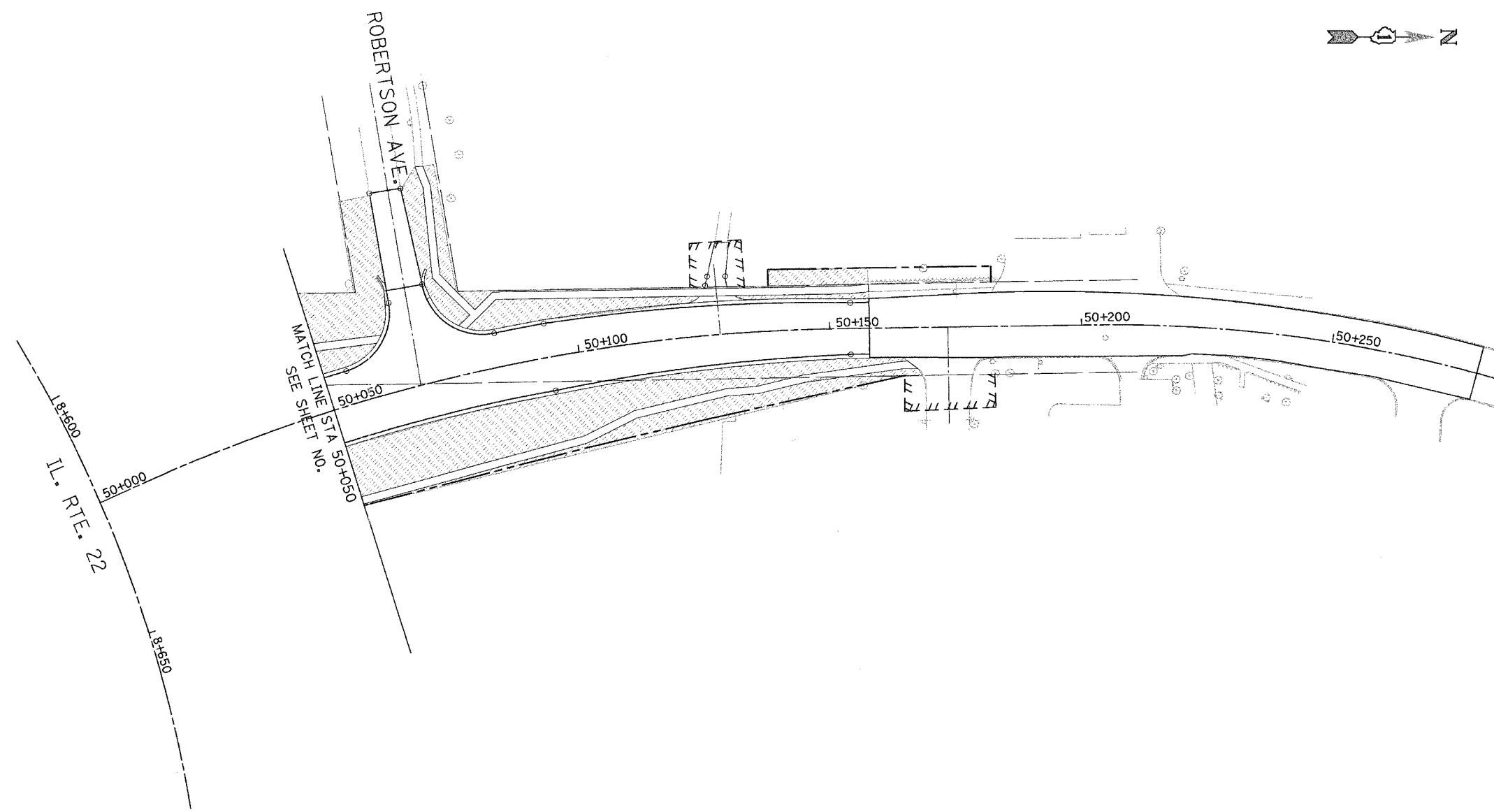



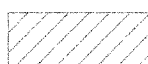
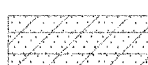

F.A. RTE.	SECTION	COUNTY	TOTAL SHEETS	SHEET NO.
337	19R-1	LAKE	800	416
STA.		TO STA.		
FED. ROAD DIST. NO.		ILLINOIS FED. AID PROJECT		

60997



MAIN STREET WEST

LANDSCAPING LEGEND

-  SEEDING CLASS 2A, EROSION CONTROL BLANKET, TOPSOIL FURNISH AND PLACE 100 mm
-  SEEDING CLASS 2A, EROSION CONTROL BLANKET, TOPSOIL FURNISH AND PLACE 600 mm
-  SEEDING CLASS 4 AND COMPOST, EROSION CONTROL BLANKET, FURNISH AND PLACE, 100 mm
-  SODDING SALT TOLERANT, TOPSOIL FURNISH AND PLACE 100 mm

REVISIONS	
NAME	DATE

ILLINOIS DEPARTMENT OF TRANSPORTATION
 ILLINOIS ROUTE 22
 FROM US RTE 12 TO BUESCHING RD
 LANDSCAPING PLAN
 MAIN STREET WEST

SCALE : 1:500
 DATE : 07/21/04

DESIGNED BY VAP
 CHECKED BY DDL