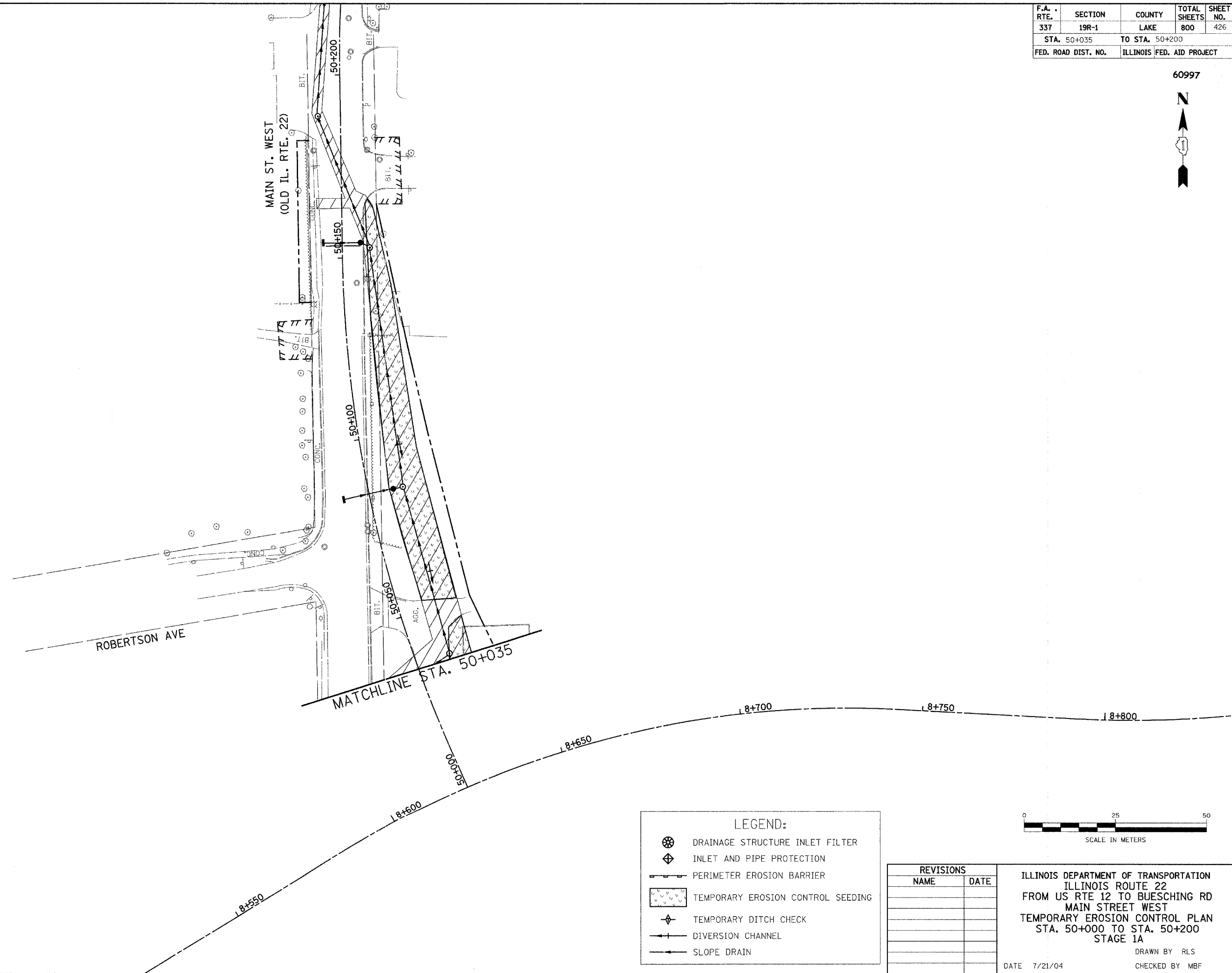
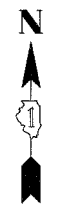


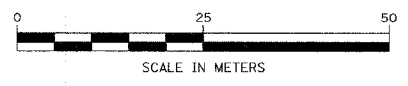
F.A. RTE.	SECTION	COUNTY	TOTAL SHEETS	SHEET NO.
337	19R-1	LAKE	800	426
STA. 50+035		TO STA. 50+200		
FED. ROAD DIST. NO.		ILLINOIS	FED. AID PROJECT	

60997



LEGEND:

- DRAINAGE STRUCTURE INLET FILTER
- INLET AND PIPE PROTECTION
- PERIMETER EROSION BARRIER
- TEMPORARY EROSION CONTROL SEEDING
- TEMPORARY DITCH CHECK
- DIVERSION CHANNEL
- SLOPE DRAIN



REVISIONS	
NAME	DATE

ILLINOIS DEPARTMENT OF TRANSPORTATION
 ILLINOIS ROUTE 22
 FROM US RTE 12 TO BUESCHING RD
 MAIN STREET WEST
 TEMPORARY EROSION CONTROL PLAN
 STA. 50+000 TO STA. 50+200
 STAGE 1A

DRAWN BY RLS
 CHECKED BY MBF

DATE 7/21/04