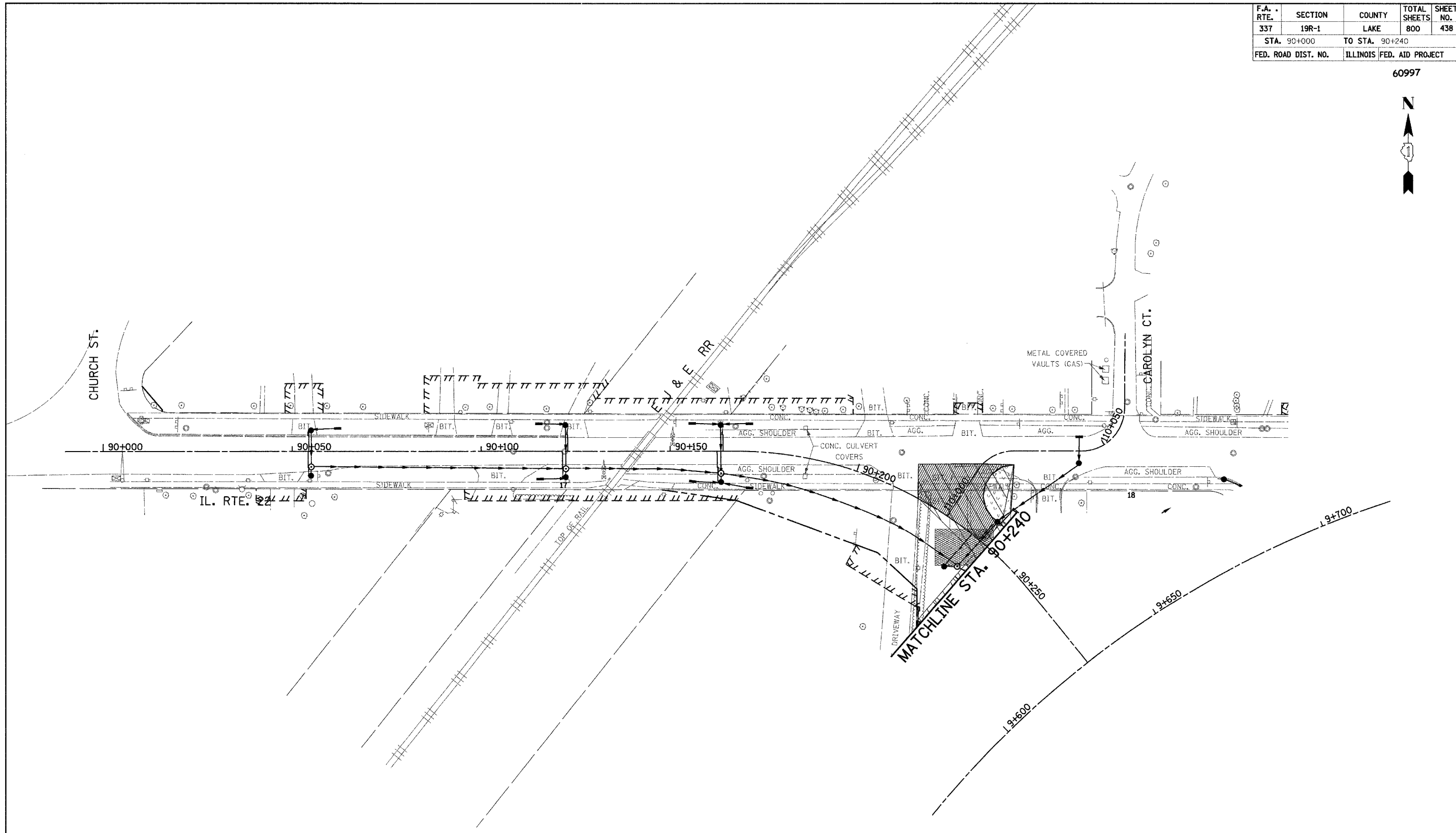
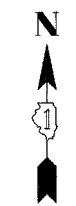


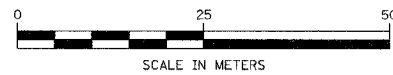
F.A. RTE.	SECTION	COUNTY	TOTAL SHEETS	SHEET NO.
337	19R-1	LAKE	800	438
STA. 90+000		TO STA. 90+240		
FED. ROAD DIST. NO.		ILLINOIS	FED. AID PROJECT	

60997



**LEGEND:**

- DRAINAGE STRUCTURE INLET FILTER
- INLET AND PIPE PROTECTION
- PERIMETER EROSION BARRIER
- TEMPORARY EROSION CONTROL SEEDING
- TEMPORARY DITCH CHECK
- DIVERSION CHANNEL
- SLOPE DRAIN



REVISIONS	
NAME	DATE

ILLINOIS DEPARTMENT OF TRANSPORTATION  
 ILLINOIS ROUTE 22  
 FROM US RTE 12 TO BUESCHING RD  
 MAIN ST. EAST-MOHAWK TRAIL  
 TEMPORARY EROSION CONTROL PLAN  
 STA. 90+000 TO STA. 90+240  
 STAGE 1A & 1B

DATE 7/21/04

DRAWN BY RLS  
 CHECKED BY MBF