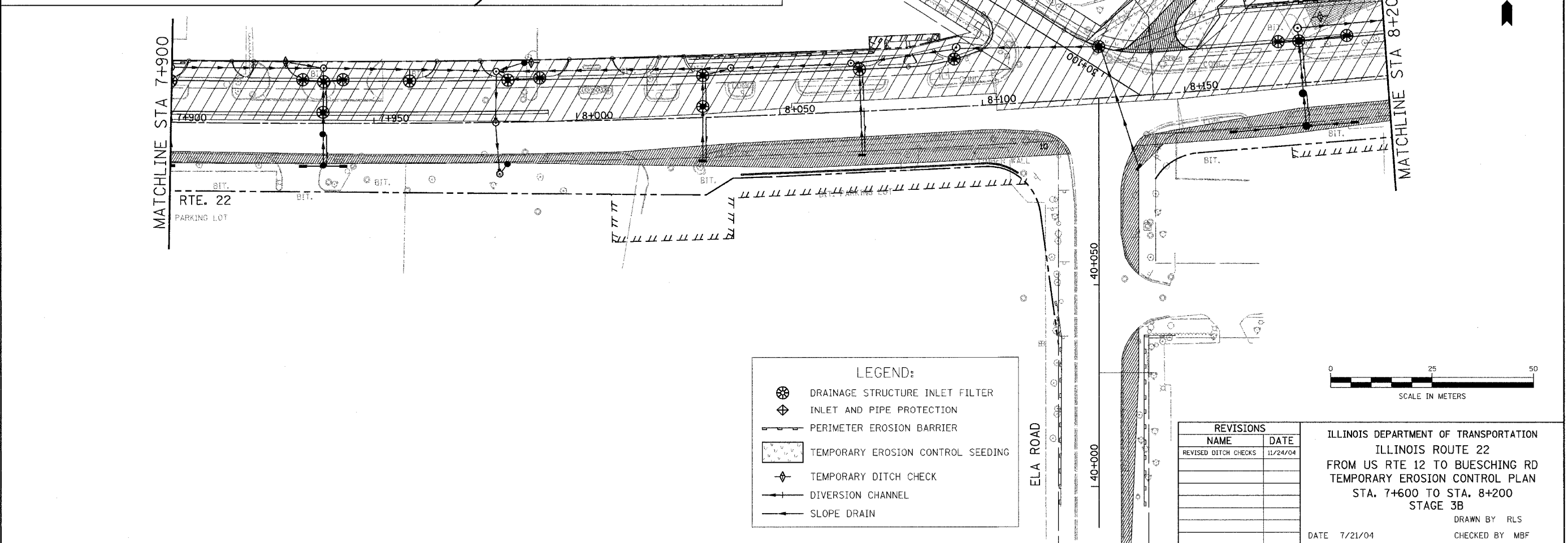
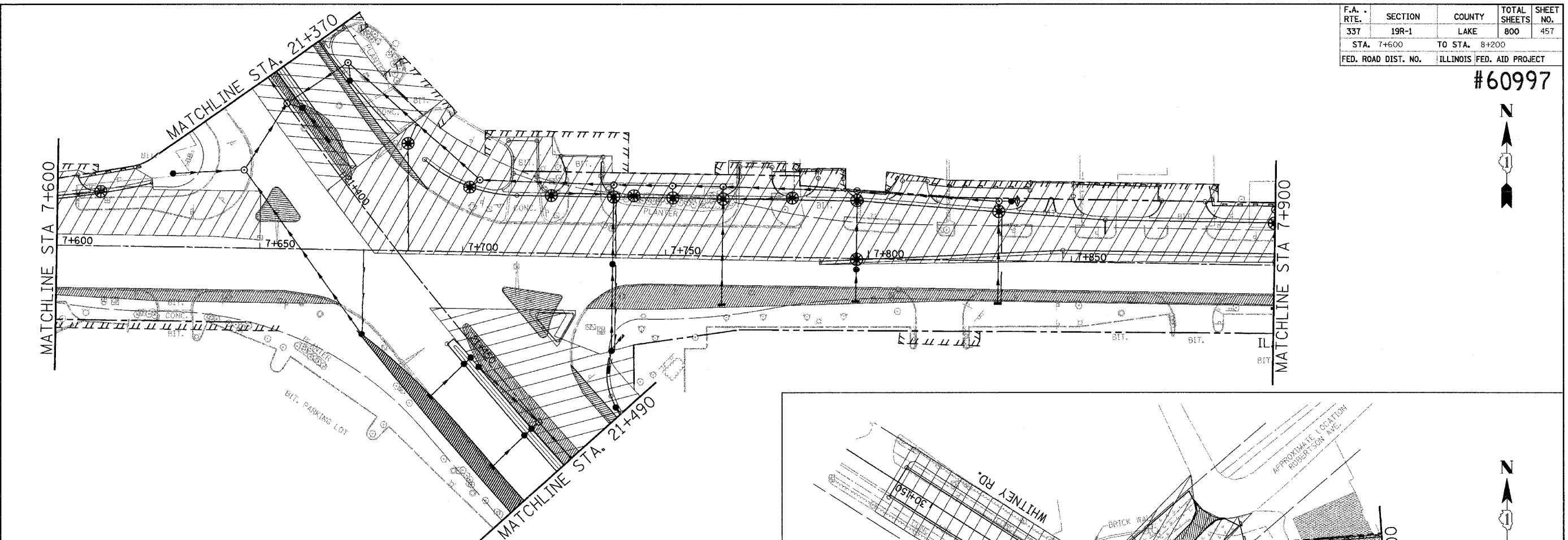
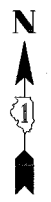


F.A. RTE.	SECTION	COUNTY	TOTAL SHEETS	SHEET NO.
337	19R-1	LAKE	800	457
STA. 7+600		TO STA. 8+200		
FED. ROAD DIST. NO.		ILLINOIS FED. AID PROJECT		

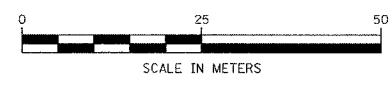
#60997



**LEGEND:**

- DRAINAGE STRUCTURE INLET FILTER
- INLET AND PIPE PROTECTION
- PERIMETER EROSION BARRIER
- TEMPORARY EROSION CONTROL SEEDING
- TEMPORARY DITCH CHECK
- DIVERSION CHANNEL
- SLOPE DRAIN

REVISIONS	
NAME	DATE
REVISED DITCH CHECKS	11/24/04



ILLINOIS DEPARTMENT OF TRANSPORTATION  
 ILLINOIS ROUTE 22  
 FROM US RTE 12 TO BUESCHING RD  
 TEMPORARY EROSION CONTROL PLAN  
 STA. 7+600 TO STA. 8+200  
 STAGE 3B  
 DRAWN BY RLS  
 CHECKED BY MBF  
 DATE 7/21/04