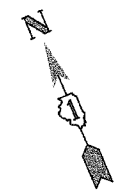
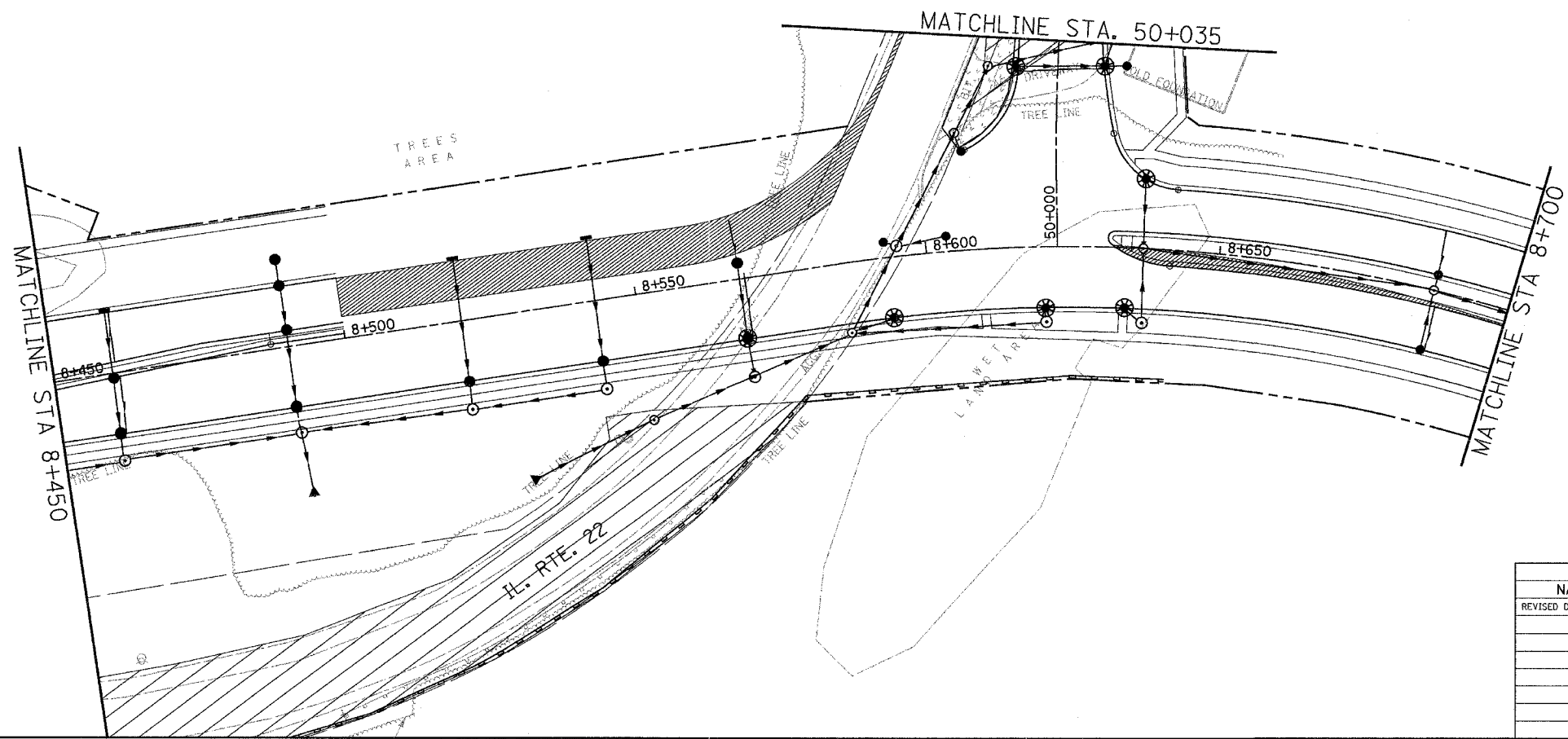
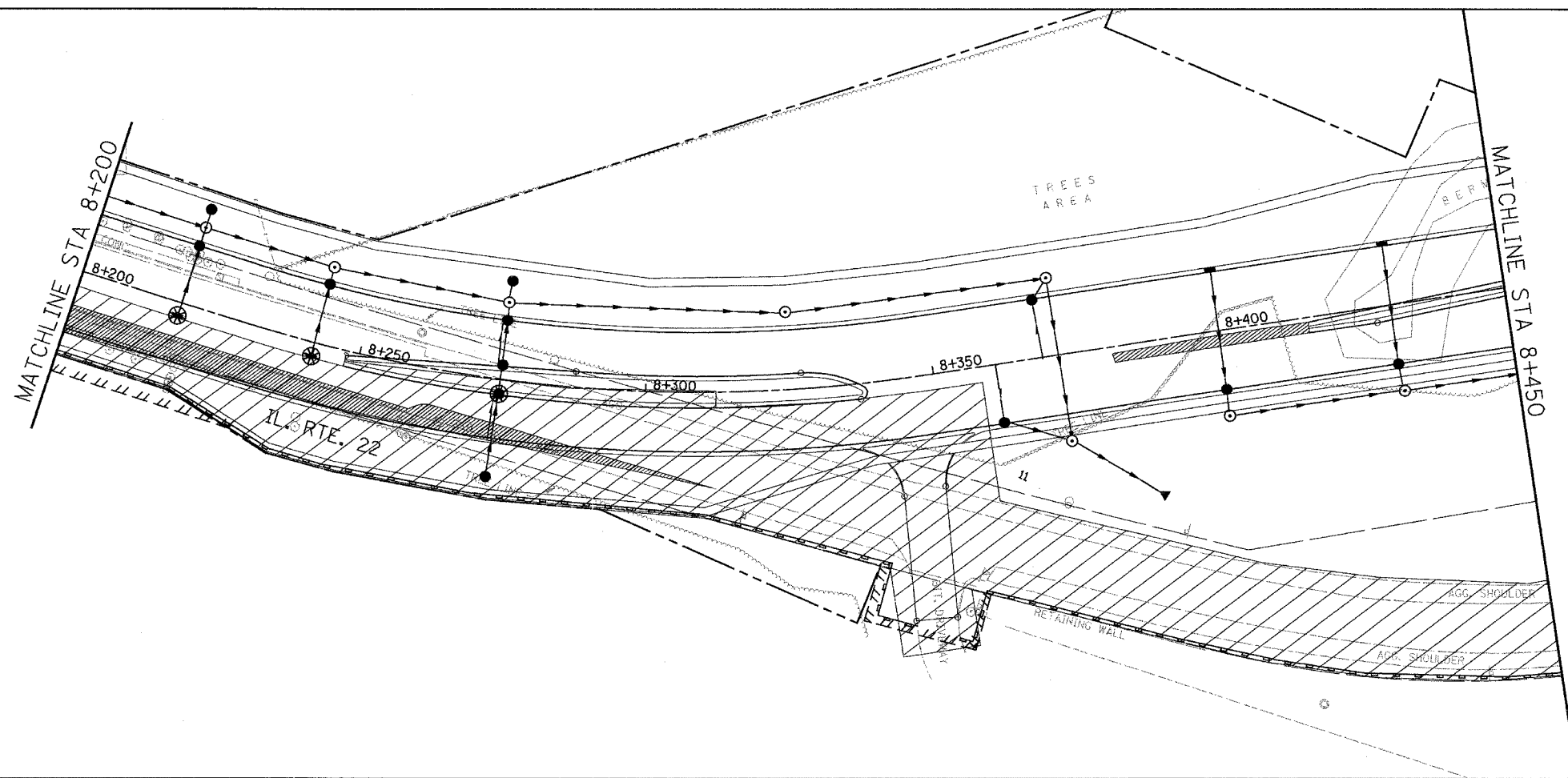


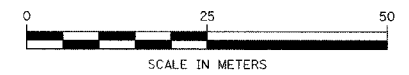
F.A. RTE.	SECTION	COUNTY	TOTAL SHEETS	SHEET NO.
337	19R-1	LAKE	800	469
STA. 8+200		TO STA. 8+700		
FED. ROAD DIST. NO.		ILLINOIS FED. AID PROJECT		

#60997



**LEGEND:**

- DRAINAGE STRUCTURE INLET FILTER
- INLET AND PIPE PROTECTION
- PERIMETER EROSION BARRIER
- TEMPORARY EROSION CONTROL SEEDING
- TEMPORARY DITCH CHECK
- DIVERSION CHANNEL
- SLOPE DRAIN



REVISIONS	
NAME	DATE
REVISED DITCH CHECKS	11/24/04

ILLINOIS DEPARTMENT OF TRANSPORTATION  
 ILLINOIS ROUTE 22  
 FROM US RTE 12 TO BUESCHING RD  
 TEMPORARY EROSION CONTROL PLAN  
 STA. 8+200 TO STA. 8+700  
 STAGE 4A & 4B  
 DRAWN BY RLS  
 DATE 7/21/04  
 CHECKED BY MBF