

SCHEDULE OF QUANTITIES

DESCRIPTION	UNIT	QUANTITY
HANDHOLE	EACH	6
HEAVY-DUTY HANDHOLE	EACH	4
DOUBLE HANDHOLE	EACH	1
MAINTENANCE OF EXISTING TRAFFIC SIGNAL INSTALLATION	EACH	1
FULL-ACTUATED CONTROLLER AND TYPE IV CABINET (SPECIAL)	EACH	1
TRANSCIVER - FIBER OPTIC	EACH	1
TRAFFIC SIGNAL BACKPLATE	EACH	8
INDUCTIVE LOOP DETECTOR	EACH	8
DETECTOR LOOP, TYPE 1	METER	99
LIGHT DETECTOR	EACH	1
LIGHT DETECTOR AMPLIFIER	EACH	1
PEDESTRIAN PUSH-BUTTON	EACH	3
TEMPORARY TRAFFIC SIGNAL INSTALLATION	EACH	1
REMOVE EXISTING TRAFFIC SIGNAL EQUIPMENT	EACH	1
REMOVE EXISTING HANDHOLE	EACH	4
REMOVE EXISTING CONCRETE FOUNDATION	EACH	9
SIGN PANEL - TYPE 2	SQ M	
CONDUIT IN TRENCH, 50MM DIA., GALVANIZED STEEL	METER	161
CONDUIT IN TRENCH, 65MM DIA., GALVANIZED STEEL	METER	28
CONDUIT IN TRENCH, 100MM DIA., GALVANIZED STEEL	METER	8
CONDUIT PUSHED, 50MM DIA., GALVANIZED STEEL	METER	36
CONDUIT PUSHED, 100MM DIA., GALVANIZED STEEL	METER	77
TRENCH AND BACKFILL FOR ELECTRICAL WORK	METER	194
DETECTOR LOOP, PREFORMED	METER	103
ELECTRIC CABLE IN CONDUIT, SIGNAL NO. 14 2C	METER	165
ELECTRIC CABLE IN CONDUIT, SIGNAL NO. 14 3C	METER	407
ELECTRIC CABLE IN CONDUIT, SIGNAL NO. 14 5C	METER	220
ELECTRIC CABLE IN CONDUIT, SIGNAL NO. 14 7C	METER	421
ELECTRIC CABLE IN CONDUIT, LEAD-IN, NO. 14 1 PAIR	METER	467
ELECTRIC CABLE IN CONDUIT, SERVICE, NO. 6 2C	METER	42
TRAFFIC SIGNAL POST, GALVANIZED STEEL 4.85 METER	EACH	2
STEEL MAST ARM ASSEMBLY AND POLE, 7.92 METER	EACH	1
STEEL MAST ARM ASSEMBLY AND POLE, 8.53 METER	EACH	2
STEEL MAST ARE ASSEMBLY AND POLE, 9.75 METER	EACH	1
CONCRETE FOUNDATION, TYPE A	METER	2.4
CONCRETE FOUNDATION, TYPE D	METER	1.2
CONCRETE FOUNDATION, TYPE E 750MM DIAMETER	METER	18.4
ELECTRIC CABLE IN CONDUIT, GROUNDING NO. 6 1C	METER	174
ELECTRIC CABLE IN CONDUIT, SIGNAL NO. 20 3C, TWISTED, SHIELDED	METER	171
SERVICE INSTALLATION, POLE MOUNT	EACH	1
SIGNAL HEAD, L.E.D., 1-FACE, 3-SECTION, MAST ARM MOUNTED	EACH	4
SIGNAL HEAD, L.E.D., 1-FACE, 5-SECTION, BRACKET MOUNTED	EACH	4
SIGNAL HEAD, L.E.D., 1-FACE, 5-SECTION, MAST ARM MOUNTED	EACH	4
PEDESTRIAN SIGNAL HEAD, L.E.D., 1-FACE, BRACKET MOUNTED	EACH	2
PEDESTRIAN SIGNAL HEAD, L.E.D., 2-FACE, BRACKET MOUNTED	EACH	1

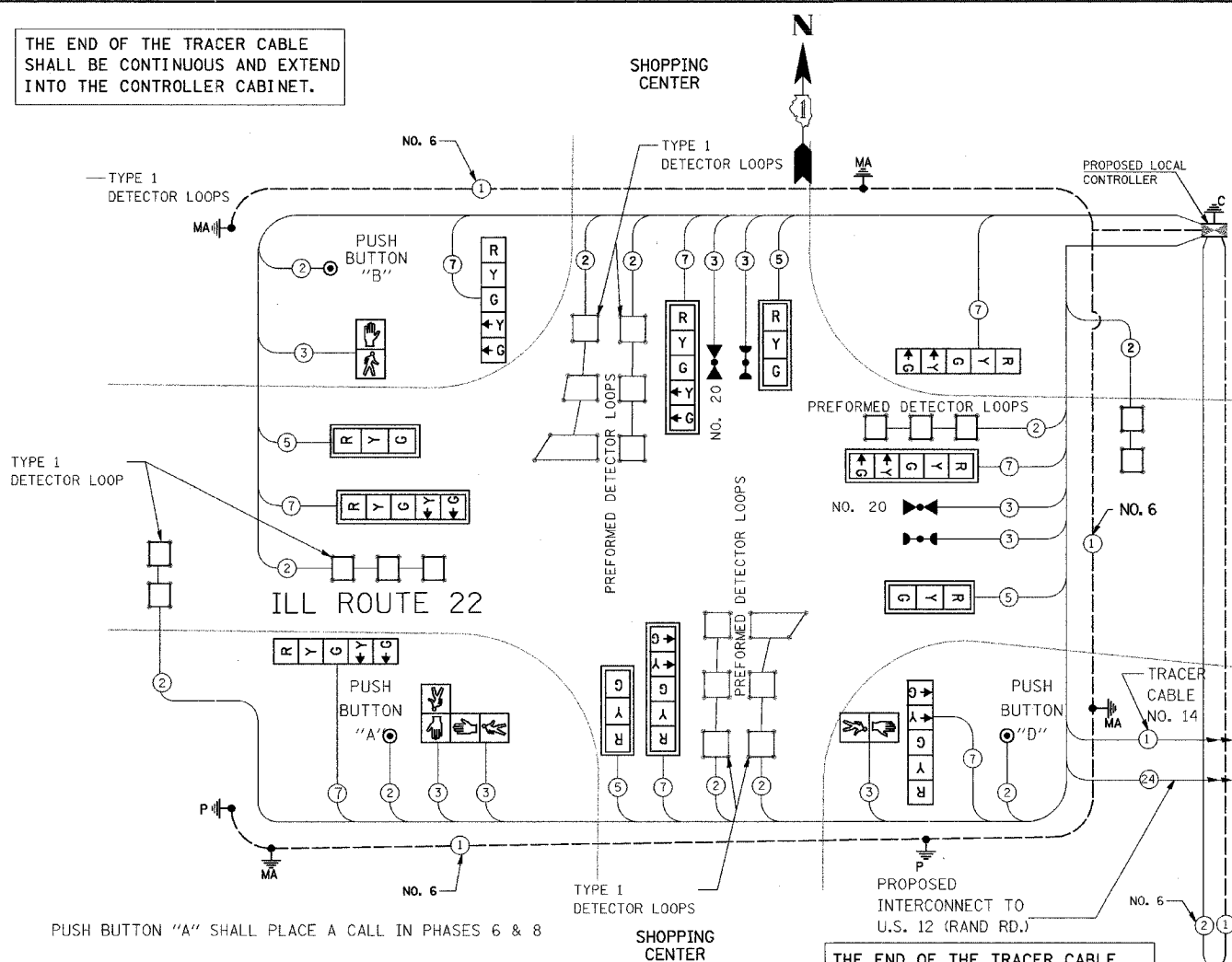
* 100% COST TO VILLAGE OF LAKE ZURICH

I.D.O.T TRAFFIC SIGNAL INSTALLATION ELECTRICAL SERVICE REQUIREMENTS					TOTAL WATTAGE
TYPE	NO. LAMPS	WATTAGE (INCAND.)	WATTAGE (LED)	*OPERATION	
SIGNAL (RED)	12	135	17	0.50	102.0
(YELLOW)	12	135	25	0.25	75.0
(GREEN)	12	135	15	0.25	45.0
ARROW	16	135	12	0.10	19.2
PED. SIGNAL	4	90	25	1.00	100.0
CONTROLLER	1	100	100	1.00	100.0
ILLUM. SIGN		84		0.05	
FLASHER				0.50	
TOTAL =					441.2

ENERGY COSTS TO: ILLINOIS DEPARTMENT OF TRANSPORTATION
201 WEST CENTER COURT
SCHAUMBURG, ILLINOIS 60196-1096
CONTACT: TERI BLACK
PHONE: (847) 816-5239
COMPANY: COM. EDISON

FOUNDATION (DEPTH)	FT. (m)	CABLE SLACK	FT. (m)	VERTICAL	FT. (m)
TYPE A - POST	4 (1.2)	HANDHOLE	6.5 (2.0)	ALL FOUNDATIONS	3.5 (1.0)
D - CONTROLLER	4 (1.2)	DOUBLE HANDHOLE	13 (4.0)	MAST ARM (L) POLE	20'+L-2'
E - M. ARM POLE		SIGNAL POST	2 (1.0)	(6m+L-0.6m)=	
		24" (600mm)	10 (3.0)	BRACKET MOUNTED	13 (4.0)
		30" (750mm)	15 (4.6)	PED. PUSHBUTTON	4 (1.2)
				ELECTRIC SERVICE	13.5 (4.1)
				FIBER OPTIC	13.5 (4.1)
				ELECTRIC SERVICE	13.5 (4.1)
				SERVICE TO GROUND	13.5 (4.1)
				POST MOUNTED	6 (1.8)

THE END OF THE TRACER CABLE SHALL BE CONTINUOUS AND EXTEND INTO THE CONTROLLER CABINET.

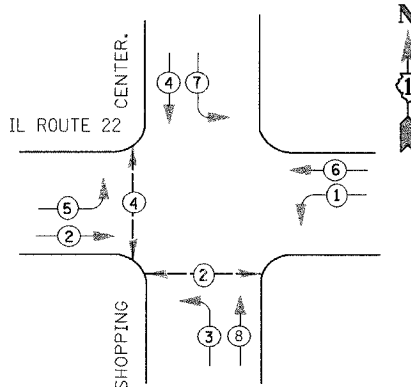


PUSH BUTTON "A" SHALL PLACE A CALL IN PHASES 6 & 8

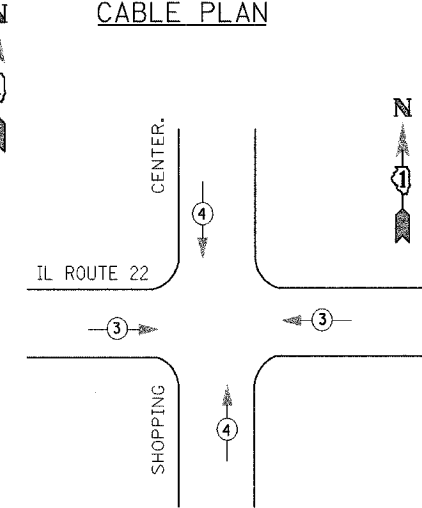
THE END OF THE TRACER CABLE SHALL BE CONTINUOUS AND EXTEND INTO THE CONTROLLER CABINET.

THE TRAFFIC SIGNAL CONTROL EQUIPMENT FOR THIS PROJECT SHALL BE "ECONOLITE" TO MATCH THE EXISTING ADJACENT SYSTEM.

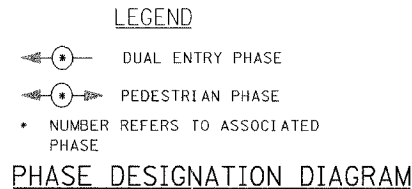
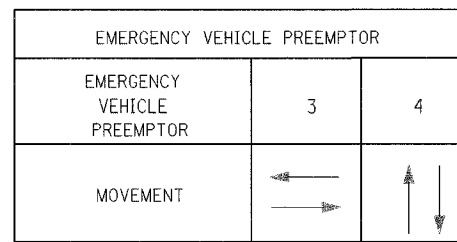
CONTROLLER SEQUENCE



CABLE PLAN



EMERGENCY VEHICLE PREEMPTION SEQUENCE



F.A. RTE.	SECTION	COUNTY	TOTAL SHEETS	SHEET NO.
337	19R-1	LAKE	800	502
STA. TO STA.		ILLINOIS FED. AID PROJECT		
FED. ROAD DIST. NO.		CONTRACT NO. 60997		

CABLE PLAN LEGEND

- EXISTING PROPOSED
- 8" (200mm) TRAFFIC SIGNAL SECTION
 - 12" (300mm) TRAFFIC SIGNAL SECTION
 - 12" (300mm) PEDESTRIAN SIGNAL SECTION
 - 12" (300mm) PEDESTRIAN SIGNAL SECTION
 - CONTROLLER CABINET
 - SERVICE INSTALLATION
 - TELEPHONE CONNECTION
 - MAGNETIC DETECTOR
 - EMERGENCY VEHICLE LIGHT DETECTOR
 - CONFIRMATION BEACON
 - PUSHBUTTON DETECTOR
 - VEHICLE DETECTOR, INDUCTIVE LOOP
 - VIDEO DETECTION
 - SIGNAL FACE WITH BACKPLATE. "P" INDICATES PROGRAMMED HEAD
 - RAILROAD CONTROL CABINET
 - ILLUMINATED SIGN, L.E.D. "NO LEFT TURN"
 - ILLUMINATED SIGN, L.E.D. "NO RIGHT TURN"
 - GROUND ROD AT HANDHOLE (H), DOUBLE HANDHOLE (H), OR CONTROLLER (C).
 - GROUND ROD AT POST (P), OR MAST ARM POLE (MA).
 - GROUND ROD AT ELECTRIC SERVICE INSTALLATION
 - GROUND CABLE IN CONDUIT NO. 6 SOLID COPPER (GREEN)
 - FIBER OPTIC CABLE IN CONDUIT NO. 62.5/125 MM12F SM12F

REVISIONS	
NAME	DATE
REVISED GEOMETRY	11/24/04
FROM STA. 6+922.366 TO	
STA. 7+440.820	

ILLINOIS DEPARTMENT OF TRANSPORTATION
SCHEDULE OF QUANTITIES, CABLE PLAN
AND PHASE DESIGNATION DIAGRAM
ILL RTE 22 & SHOPPING CENTER

SCALE: N.T.S.
DATE: 07/21/04

DRAWN BY VAP
DESIGNED BY RAM
CHECKED BY DDL