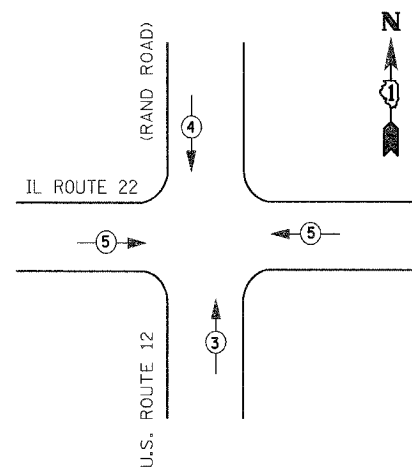


SCHEDULE OF QUANTITIES

DESCRIPTION	UNIT	QUANTITY
HANDHOLE	EACH	8
HEAVY-DUTY HANDHOLE	EACH	4
DOUBLE HANDHOLE	EACH	1
MAINTENANCE OF EXISTING TRAFFIC SIGNAL INSTALLATION	EACH	1
FULL-ACTUATED CONTROLLER AND TYPE V CABINET, SPECIAL	EACH	1
MASTER CONTROLLER	EACH	1
TRANSCEIVER - FIBER OPTIC	EACH	1
TRAFFIC SIGNAL BACKPLATE	EACH	14
INDUCTIVE LOOP DETECTOR	EACH	8
LIGHT DETECTOR	EACH	1
LIGHT DETECTOR AMPLIFIER	EACH	1
PEDESTRIAN PUSH-BUTTON	EACH	2
TEMPORARY TRAFFIC SIGNAL INSTALLATION	EACH	1
REMOVE EXISTING TRAFFIC SIGNAL EQUIPMENT	EACH	1
REMOVE EXISTING HANDHOLE	EACH	12
REMOVE EXISTING CONCRETE FOUNDATION	EACH	9
SIGN PANEL - TYPE 1	SQ. M	1.53
SIGN PANEL - TYPE 2	SQ. M	2.32
CONDUIT IN TRENCH, 50MM DIA., GALVANIZED STEEL	METER	278
CONDUIT IN TRENCH, 65MM DIA., GALVANIZED STEEL	METER	41
CONDUIT IN TRENCH, 100MM DIA., GALVANIZED STEEL	METER	13
CONDUIT PUSHED, 50MM DIA., GALVANIZED STEEL	METER	88
CONDUIT PUSHED, 65MM DIA., GALVANIZED STEEL	METER	20
CONDUIT PUSHED, 100MM DIA., GALVANIZED STEEL	METER	119
TRENCH AND BACKFILL FOR ELECTRICAL WORK	METER	329
DETECTOR LOOP, PREFORMED	METER	311
ELECTRIC CABLE IN CONDUIT, SIGNAL NO. 14 2C	METER	105
ELECTRIC CABLE IN CONDUIT, SIGNAL NO. 14 3C	METER	426
ELECTRIC CABLE IN CONDUIT, SIGNAL NO. 14 5C	METER	826
ELECTRIC CABLE IN CONDUIT, SIGNAL NO. 14 7C	METER	670
ELECTRIC CABLE IN CONDUIT, LEAD-IN, NO. 14 1 PAIR	METER	791
ELECTRIC CABLE IN CONDUIT, SERVICE, NO. 6 2C	METER	25
TRAFFIC SIGNAL POST, GALVANIZED STEEL 3.00 METER	EACH	1
STEEL MAST ARM ASSEMBLY AND POLE, 7.92 METER	EACH	1
STEEL MAST ARM ASSEMBLY AND POLE, 9.14 METER	EACH	1
STEEL MAST ARM ASSEMBLY AND POLE, 10.97 METER	EACH	2
STEEL MAST ARM ASSEMBLY AND POLE, 16.46 METER	EACH	2
CONCRETE FOUNDATION, TYPE A	METER	1.2
CONCRETE FOUNDATION, TYPE D	METER	1.2
CONCRETE FOUNDATION, TYPE E 750MM DIAMETER	METER	18.4
ELECTRIC CABLE IN CONDUIT, GROUNDING NO. 6 1C	METER	238
ELECTRIC CABLE IN CONDUIT, SIGNAL NO. 20 3C, TWISTED, SHIELDED	METER	199
SERVICE INSTALLATION, POLE MOUNT	EACH	1
SIGNAL HEAD, L.E.D., 1-FACE, 3-SECTION, MAST ARM MOUNTED	EACH	6
SIGNAL HEAD, L.E.D., 1-FACE, 3-SECTION, BRACKET MOUNTED	EACH	1
SIGNAL HEAD, L.E.D., 1-FACE, 5-SECTION, BRACKET MOUNTED	EACH	1
SIGNAL HEAD, L.E.D., 1-FACE, 5-SECTION, MAST ARM MOUNTED	EACH	8
SIGNAL HEAD, L.E.D., 2-FACE, 3-SECTION, BRACKET MOUNTED	EACH	1
SIGNAL HEAD, L.E.D., 2-FACE, 1-3 SECTION, 1-5 SECTION, BRACKET MOUNTED	EACH	1
PEDESTRIAN SIGNAL HEAD, L.E.D., 1-FACE, BRACKET MOUNTED	EACH	2
PEDESTRIAN SIGNAL HEAD, L.E.D., 2-FACE, BRACKET MOUNTED	EACH	1
CONCRETE FOUNDATION, TYPE E 900MM DIAMETER	METER	9.2

• 100% COST TO THE VILLAGE OF LAKE ZURICH



EMERGENCY VEHICLE PREEMPTION SEQUENCE

EMERGENCY VEHICLE PREEMPTOR			
EMERGENCY VEHICLE PREEMPTOR	3	4	5
MOVEMENT	↑	↓	←

REVISIONS		ILLINOIS DEPARTMENT OF TRANSPORTATION
NAME	DATE	
		SCHEDULE OF QUANTITIES AND EMERGENCY VEHICLE PHASE DESIGNATION IL RTE 22 & RAND ROAD
DATE: 08/21/02		DRAWN BY VAP DESIGNED BY RAM CHECKED BY DDL

V:\198\198031\198031.dwg 07/21/02 08:08:00 AM