

F.A. RTE.	SECTION	COUNTY	TOTAL SHEETS	SHEET NO.
337	19R-1	LAKE	800	525
STA.		TO STA.		
FED. ROAD DIST. NO.		ILLINOIS FED. AID PROJECT		
CONTRACT NO. 60997				

SCHEDULE OF QUANTITIES

DESCRIPTION	UNIT	QUANTITY
HANDHOLE	EACH	6
HEAVY-DUTY HANDHOLE	EACH	2
DOUBLE HANDHOLE	EACH	1
FULL-ACTUATED CONTROLLER AND TYPE IV CABINET	EACH	1
TRANSCEIVER - FIBER OPTIC	EACH	1
TRAFFIC SIGNAL BACKPLATE	EACH	6
INDUCTIVE LOOP DETECTOR	EACH	6
LIGHT DETECTOR	EACH	2
LIGHT DETECTOR AMPLIFIER	EACH	1
PEDESTRIAN PUSH-BUTTON	EACH	4
SIGN PANEL - TYPE 1	SQ. M.	2.09
CONDUIT IN TRENCH, 50MM DIA., GALVANIZED STEEL	METER	176
CONDUIT IN TRENCH, 65MM DIA., GALVANIZED STEEL	METER	25
CONDUIT IN TRENCH, 75MM DIA., GALVANIZED STEEL	METER	9
CONDUIT IN TRENCH, 100MM DIA., GALVANIZED STEEL	METER	22
CONDUIT PUSHED, 50MM DIA., GALVANIZED STEEL	METER	35
CONDUIT PUSHED, 100MM DIA., GALVANIZED STEEL	METER	52
TRENCH AND BACKFILL FOR ELECTRICAL WORK	METER	200
DETECTOR LOOP, PREFORMED	METER	208
ELECTRIC CABLE IN CONDUIT, SIGNAL NO. 14 2C	METER	212
ELECTRIC CABLE IN CONDUIT, SIGNAL NO. 14 3C	METER	480
ELECTRIC CABLE IN CONDUIT, SIGNAL NO. 14 5C	METER	353
ELECTRIC CABLE IN CONDUIT, SIGNAL NO. 14 7C	METER	224
ELECTRIC CABLE IN CONDUIT, LEAD-IN, NO. 14 1 PAIR	METER	343
ELECTRIC CABLE IN CONDUIT, SERVICE, NO. 6 2C	METER	13
TRAFFIC SIGNAL POST, GALVANIZED STEEL 3.0 METER	EACH	2
TRAFFIC SIGNAL POST, GALVANIZED STEEL 4.85 METER	EACH	1
STEEL MAST ARM ASSEMBLY AND POLE, 7.32 METER	EACH	2
STEEL MAST ARM ASSEMBLY AND POLE, 14.02 METER	EACH	1
CONCRETE FOUNDATION, TYPE A	METER	1.2
CONCRETE FOUNDATION, TYPE D	METER	1.2
CONCRETE FOUNDATION, TYPE E 750MM DIAMETER	METER	9.2
ELECTRIC CABLE IN CONDUIT, GROUNDING NO. 6 1C	METER	153
ELECTRIC CABLE IN CONDUIT, SIGNAL NO. 20 3C, TWISTED, SHIELDED	METER	202
SERVICE INSTALLATION, POLE MOUNT	EACH	1
SIGNAL HEAD, L.E.D., 1-FACE, 3-SECTION, MAST ARM MOUNTED	EACH	4
SIGNAL HEAD, L.E.D., 1-FACE, 3-SECTION, BRACKET MOUNTED	EACH	2
SIGNAL HEAD, L.E.D., 1-FACE, 5-SECTION, BRACKET MOUNTED	EACH	2
SIGNAL HEAD, L.E.D., 1-FACE, 5-SECTION, MAST ARM MOUNTED	EACH	2
PEDESTRIAN SIGNAL HEAD, L.E.D., 1-FACE, BRACKET MOUNTED	EACH	2
PEDESTRIAN SIGNAL HEAD, L.E.D., 2-FACE, BRACKET MOUNTED	EACH	2
PAINT NEW MAST ARM POLE, UNDER 12.19 METERS	EACH	2
PAINT NEW MAST ARM POLE, 12.19 METERS AND OVER	EACH	1
PAINT NEW TRAFFIC SIGNAL POST	EACH	1
FLASHING BEACON INSTALLATION	EACH	2
CONCRETE FOUNDATION, TYPE E 900MM DIAMETER	METER	4.6

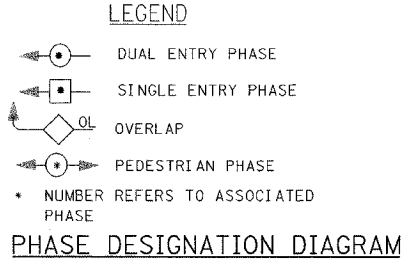
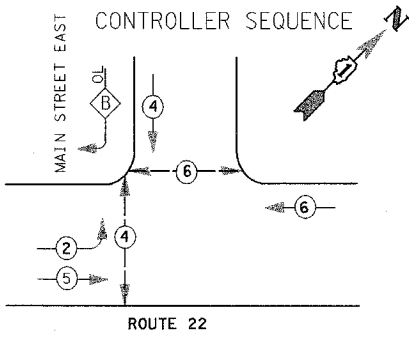
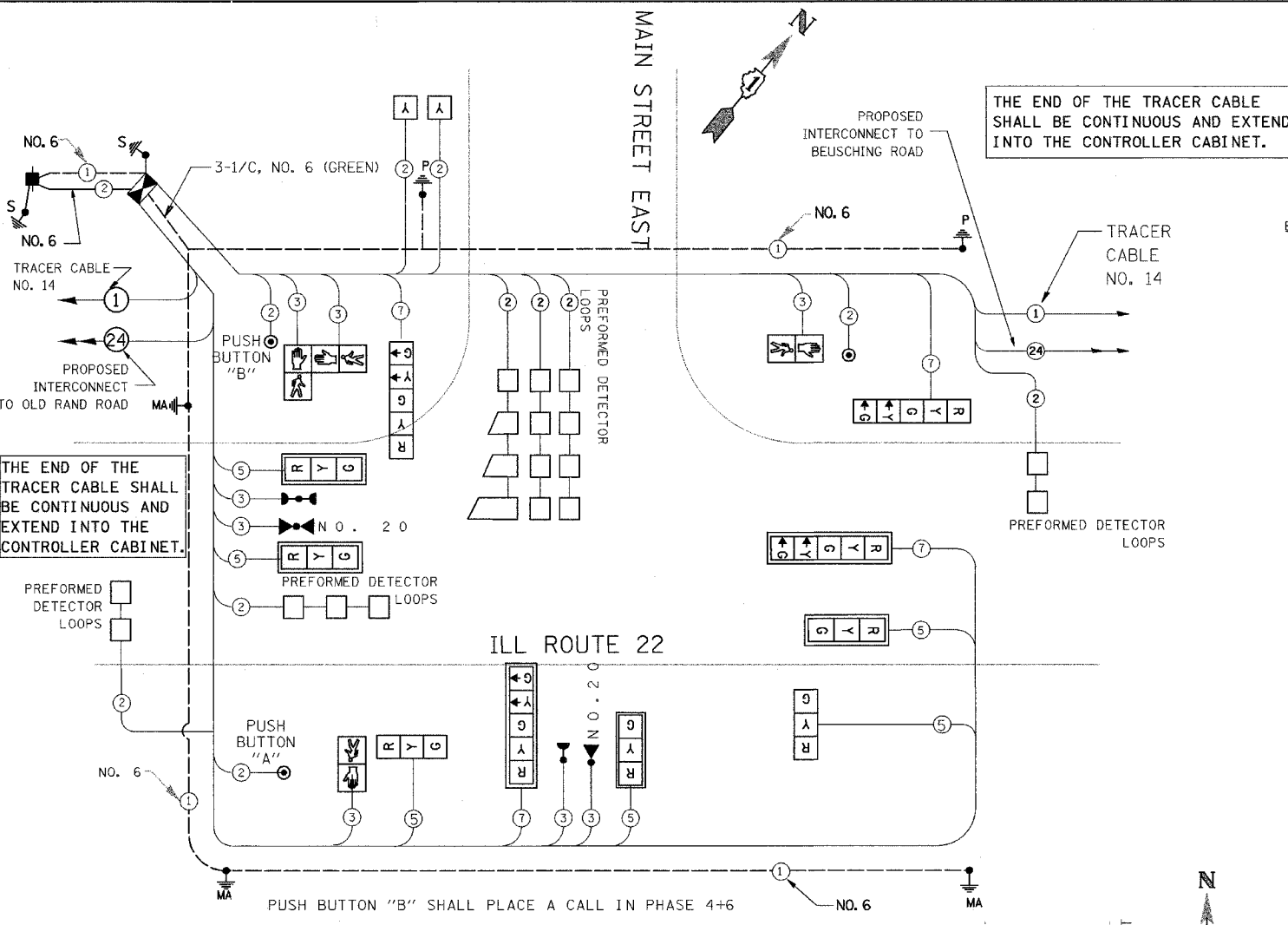
• 100% COST TO THE VILLAGE OF LAKE ZURICH

I.D.O.T. TRAFFIC SIGNAL INSTALLATION ELECTRICAL SERVICE REQUIREMENTS					TOTAL WATTAGE
TYPE	NO. LAMPS	WATTAGE (INCAND.)	WATTAGE (LED)	% OPERATION	
SIGNAL (RED)	10	135	17	0.50	85.00
(YELLOW)	10	135	25	0.25	62.50
(GREEN)	10	135	15	0.25	37.50
ARROW	8	135	12	0.10	9.60
PED. SIGNAL	6	90	25	1.00	150.0
CONTROLLER	1	100	100	1.00	100.00
ILLUM. SIGN	0	84		0.05	
FLASHER				0.50	
TOTAL =					444.6

ENERGY COSTS TO: **TOTAL = 444.6**

ILLINOIS DEPARTMENT OF TRANSPORTATION
201 WEST CENTER COURT
SCHAMBURG, ILLINOIS 60196-1096
CONTACT: TERI BLACK
PHONE: (847) 816-5239
COMPANY: COM. EDISON

FOUNDATION (DEPTH)	FT. (m)	CABLE SLACK	FT. (m)	VERTICAL	FT. (m)
TYPE A - POST	4 (1.2)	HANDHOLE	6.5 (2.0)	ALL FOUNDATIONS	3.5 (1.0)
D - CONTROLLER	4 (1.2)	DOUBLE HANDHOLE	13 (4.0)	MAST ARM (L) POLE	20'+L-2'
E - M. ARM POLE		SIGNAL POST	2 (1.0)	BRACKET MOUNTED	6m+L-0.6m
		24" (600mm)	10 (3.0)	CONTROLLER CAB.	1 (0.5)
		30" (750mm)	15 (4.6)	FIBER OPTIC	13 (4.0)
				ELECTRIC SERVICE	1 (0.5)
				ELECTRIC SERVICE	13.5 (4.1)
				SERVICE TO GROUND	13.5 (4.1)
				POST MOUNTED	6 (1.8)



OVERLAP PERMISSIVE PROTECTIVE
LETTER PHASE PHASE
B = 4 + 2

THE TRAFFIC SIGNAL CONTROL EQUIPMENT FOR THIS PROJECT SHALL BE "ECONOLITE" TO MATCH THE EXISTING ADJACENT SYSTEM.

CABLE PLAN LEGEND

- EXISTING PROPOSED
- 8" (200mm) TRAFFIC SIGNAL SECTION
 - 12" (300mm) TRAFFIC SIGNAL SECTION
 - 12" (300mm) PEDESTRIAN SIGNAL SECTION
 - 12" (300mm) PEDESTRIAN SIGNAL SECTION
 - CONTROLLER CABINET
 - SERVICE INSTALLATION
 - TELEPHONE CONNECTION
 - MAGNETIC DETECTOR
 - EMERGENCY VEHICLE LIGHT DETECTOR
 - CONFIRMATION BEACON
 - PUSHBUTTON DETECTOR
 - VEHICLE DETECTOR, INDUCTION LOOP
 - DENOTES NUMBER OF CONDUCTORS, ALL CABLE NO. 14 EXCEPT AS INDICATED. ALL LOOP DETECTOR CABLE TO BE SHIELDED.
 - SIGNAL FACE WITH BACKPLATE, "P" INDICATES PROGRAMMED HEAD
 - RAILROAD CONTROL CABINET
 - ILLUMINATED SIGN, L.E.D. "NO LEFT TURN"
 - ILLUMINATED SIGN, L.E.D. "NO RIGHT TURN"
 - GROUND ROD AT HANDHOLE (H), DOUBLE HANDHOLE (H), OR CONTROLLER (C).
 - GROUND ROD AT POST (P), OR MAST ARM POLE (MA).
 - GROUND ROD AT ELECTRIC SERVICE INSTALLATION
 - GROUND CABLE IN CONDUIT NO. 6 SOLID COPPER (GREEN)
 - FIBER OPTIC CABLE IN CONDUIT NO. 62.5/125 MM12F SM12F

PROPOSED EMERGENCY VEHICLE PREEMPTORS		
EMERGENCY VEHICLE PREEMPTOR	3	4
MOVEMENT		

REVISIONS	
NAME	DATE
Rev. Post Quantity	11/24/04

ILLINOIS DEPARTMENT OF TRANSPORTATION

SCHEDULE OF QUANTITIES, CABLE PLAN AND PHASE DESIGNATION DIAGRAM IL RTE 22 & MAIN STREET EAST

SCALE : N.T.S.
DATE : 07/21/04

DRAWN BY VAP
DESIGNED BY RAM
CHECKED BY DDL