

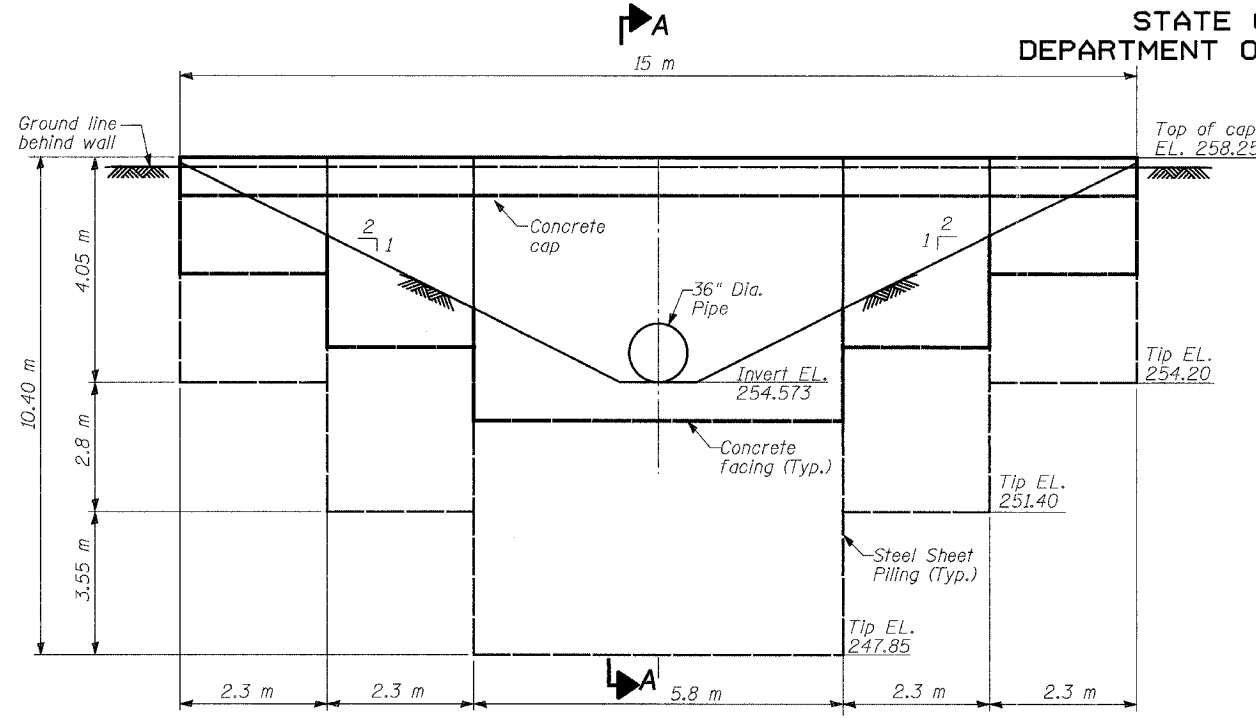
BENCHMARK:

BM NO. 60 - Box cut in concrete light pole base east side of mail parking lot, S.W. corner of Rand Road & IL Route 22 EL. 259.057.

STATE OF ILLINOIS
DEPARTMENT OF TRANSPORTATION

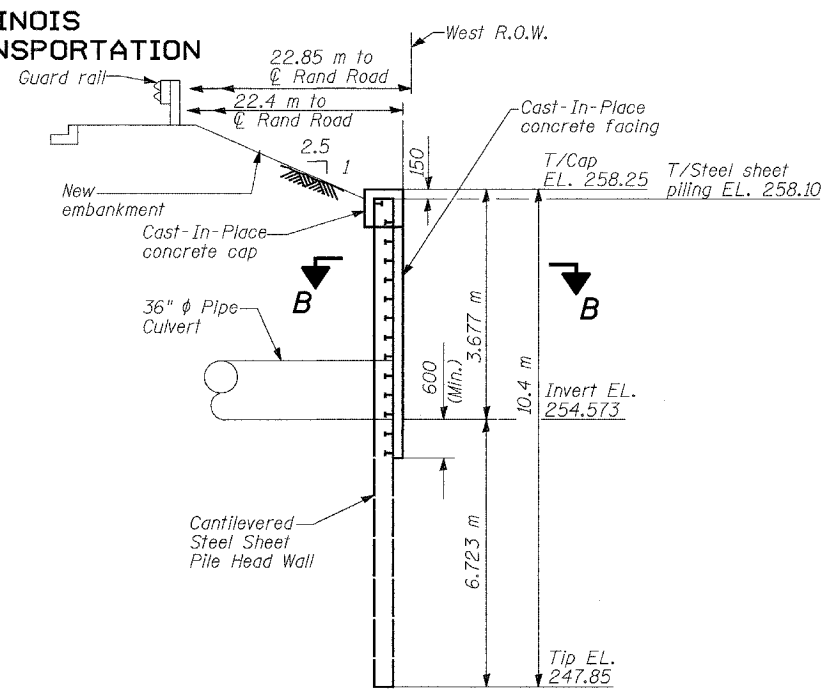
ROUTE NO.	SECTION	COUNTY	TOTAL SHEETS	SHEET NO.
FAP 337 (IL 22)	19R-1	LAKE	800	552
FED. ROAD DIST. NO.		ILLINOIS	FED. AID PROJECT-	

60991



ELEVATION

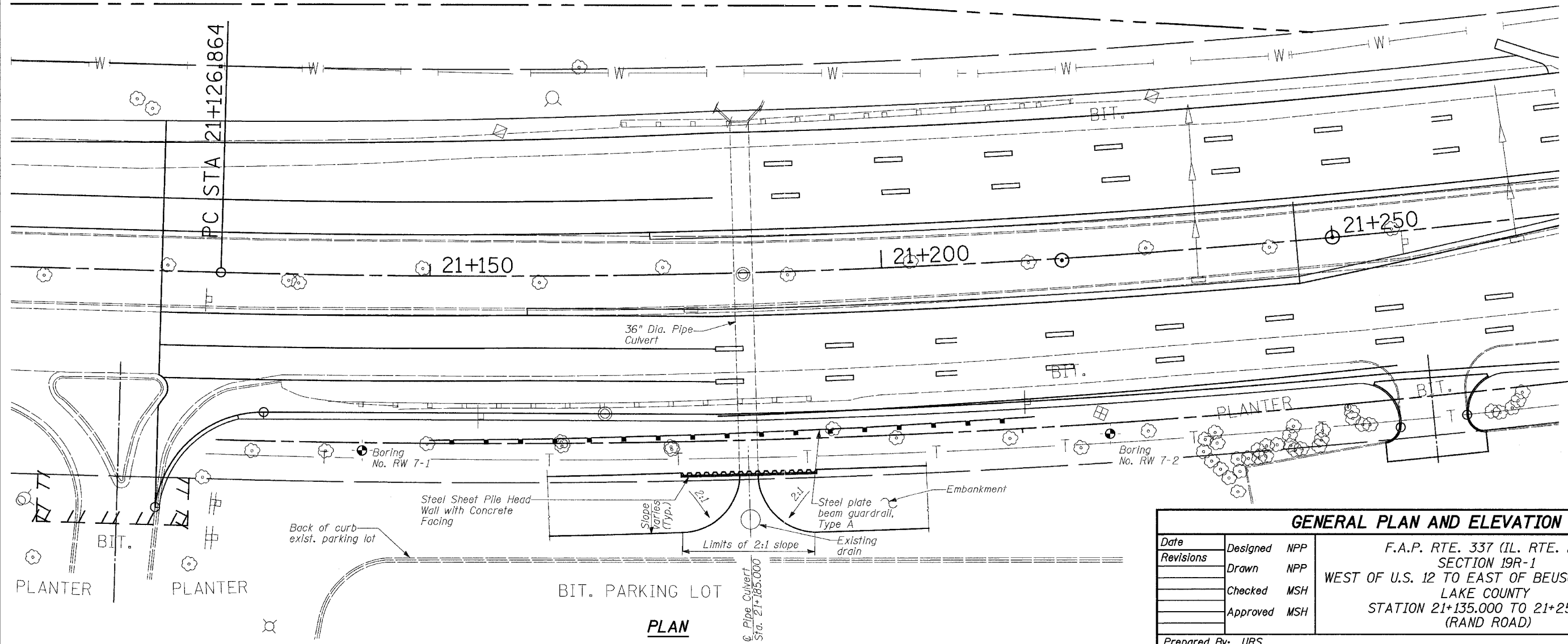
(Looking East at Sta. 21+185.000)



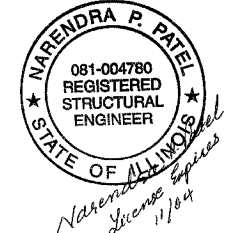
SECTION A-A

Notes:

1. Work this Sheet with Sheet 2.
2. The offset dimension to the center line of Rand Road is from the outer face of the rustication.
3. See Sheet 2 for Section B-B.
4. See Sheet 2 for details of concrete facing and Bill of Materials.
5. Minimum Effective Section Modulus for Permanent Steel Sheet Piling shall be $2202 \times 10^3 \text{ mm}^3/\text{m}$.
6. Removal of the existing box culvert is included with pay item "Culvert Removal".
7. Structure Excavation required for concrete facing will not be paid separately but will be included with roadway pay item "Earth Excavation".
8. See Sheet 37 of the Bridge Plans for SN 049-0188 for soil boring logs.
9. All dimensions are in millimeters (mm), except as noted.



PLAN



GENERAL PLAN AND ELEVATION HEAD WALL

Date	Designed	NPP	F.A.P. RTE. 337 (IL. RTE. 22)	Sheet No. 1 of 2
Revisions	Drawn	NPP	SECTION 19R-1	
	Checked	MSH	WEST OF U.S. 12 TO EAST OF BEUSCHING ROAD	
	Approved	MSH	LAKE COUNTY	
			STATION 21+135.000 TO 21+250.000 (RAND ROAD)	
Prepared By: URS				