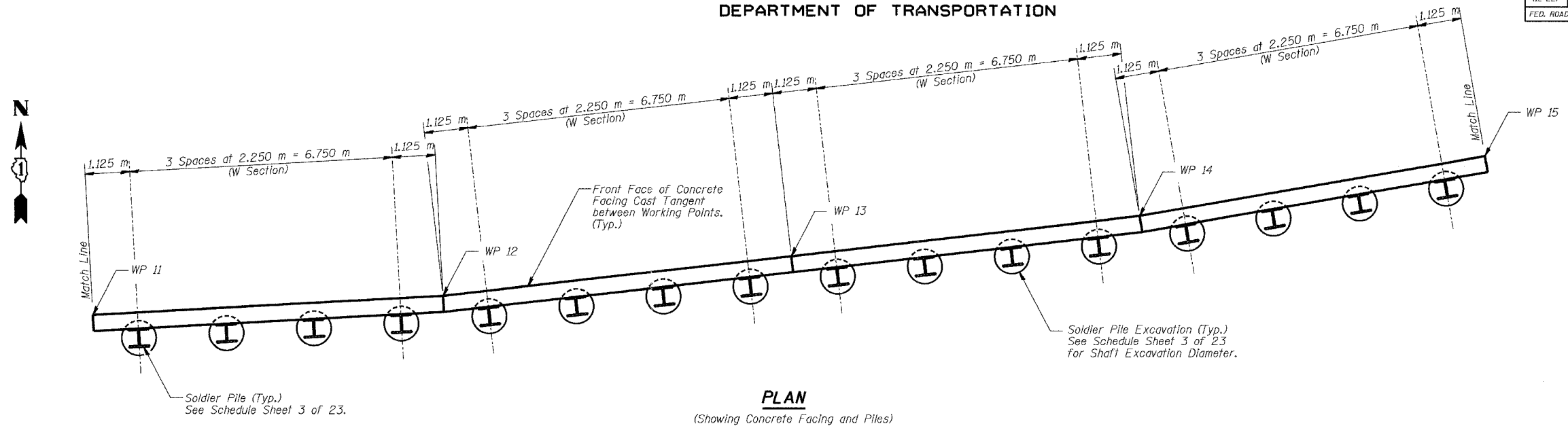


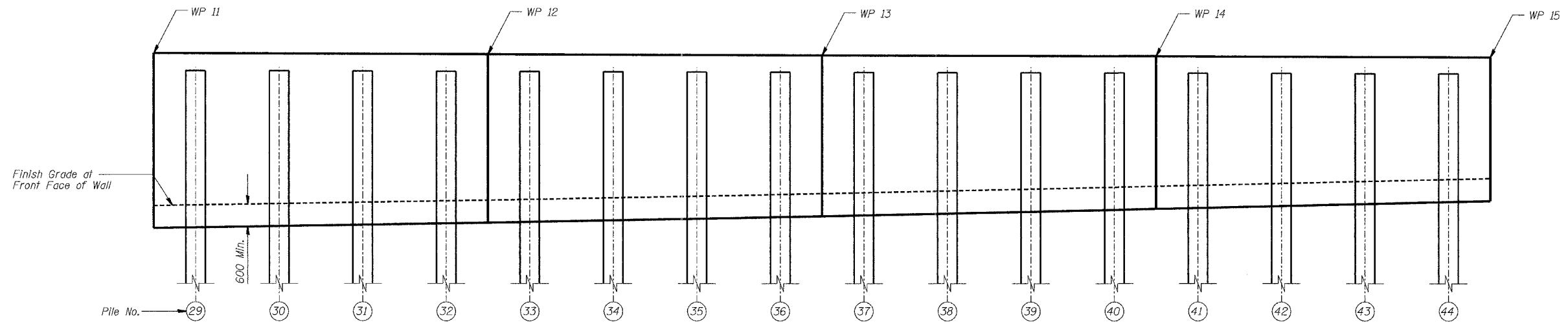
ROUTE NO.	SECTION	COUNTY	TOTAL SHEETS	SHEET NO.
FAP 337 (IL 22)	19R-1	LAKE	800	505
FED. ROAD DIST. NO.	ILLINOIS	FED. AID PROJECT-		

STATE OF ILLINOIS  
DEPARTMENT OF TRANSPORTATION



**PLAN**

(Showing Concrete Facing and Piles)



**ELEVATION**

(Showing Concrete Facing and Piles)

**NOTES**

1. Piles shall be placed with flanges parallel to the front face of wall.
2. All dimensions are in millimeters (mm) except as noted.
3. See Sheet 3 of 23 for Top of Pile Elevations.
4. See Sheets 9, 10, & 11 of 23 for Top & Bottom of Concrete Facing Elevations.

SOLDIER PILES			
Date	Designed	TDN	F.A.P. RTE. 337 (IL. RTE. 22) SECTION 19R-1 WEST OF U.S. 12 TO EAST OF BEUSCHING ROAD LAKE COUNTY STATION 8+752.493 TO 8+883.521 STRUCTURE NO. 049-W029
Revisions	Drawn	BKN	
	Checked	KWB	
	Approved	KWB	
			Sheet No. <b>6</b> of 23
			URS Job No. 2.100001385.01