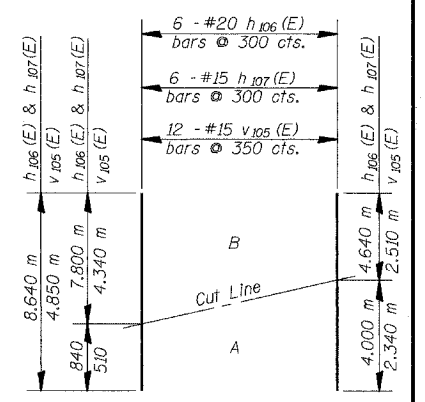
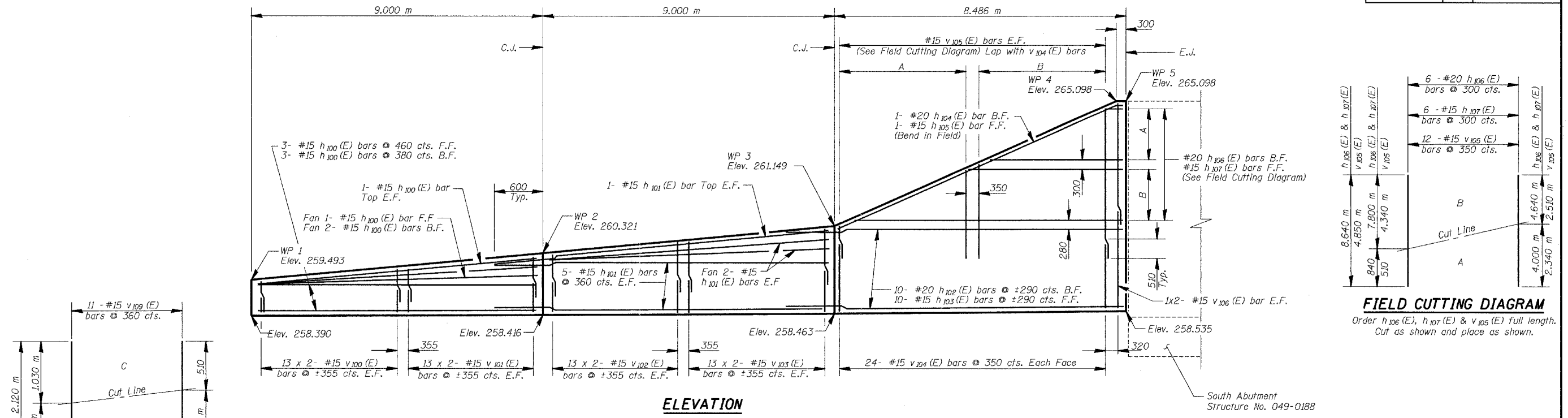
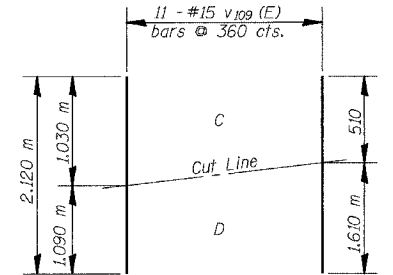


ROUTE NO.	SECTION	COUNTY	TOTAL SHEETS	SHEET NO.
FAP 337 (IL 22)	19R-1	LAKE	800	508
FED. ROAD DIST. NO.		ILLINOIS	FED. AID PROJECT-	

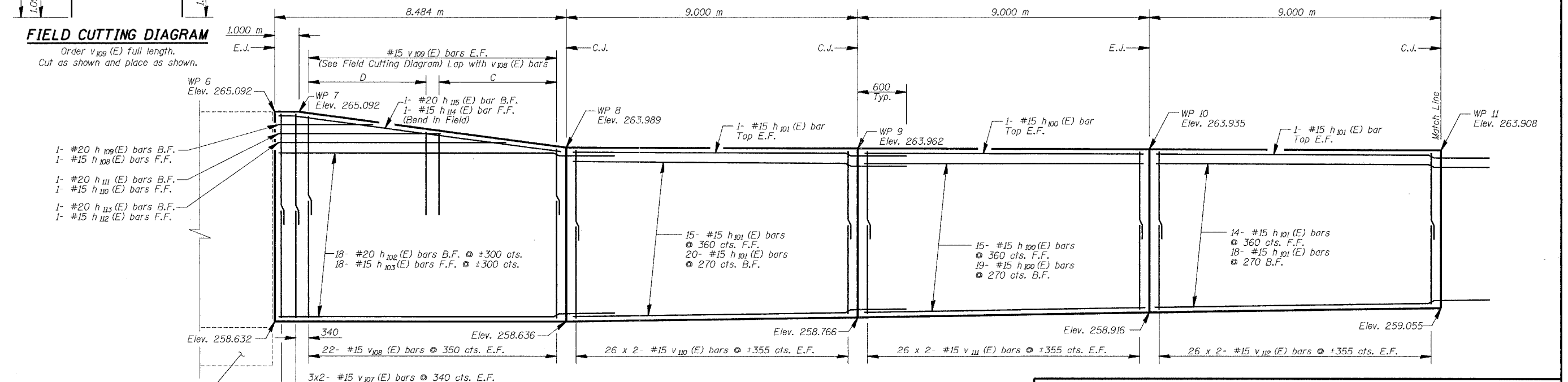
STATE OF ILLINOIS
DEPARTMENT OF TRANSPORTATION



FIELD CUTTING DIAGRAM
Order h₁₀₆(E), h₁₀₇(E) & v₁₀₅(E) full length. Cut as shown and place as shown.



FIELD CUTTING DIAGRAM
Order v₁₀₉(E) full length. Cut as shown and place as shown.



South Abutment
Structure No. 049-0188

ELEVATION

MIN. BAR LAP
#15 = 510

NOTES

- All dimensions are in millimeters (mm) except as noted.
- Bars indicated thus 26 x 2- #15 etc. indicates 26 lines of bars with 2 lengths per line.

CONCRETE FACING

Date	Designed TDN	F.A.P. RTE. 337 (IL. RTE. 22) SECTION 19R-1 WEST OF U.S. 12 TO EAST OF BEUSCHING ROAD LAKE COUNTY STATION 8+752.493 TO 8+883.521 STRUCTURE NO. 049-W029	Sheet No. 9 of 23 URS Job No. 2100001385.01
Revisions	Drawn BKN		
	Checked KWB		
	Approved KWB		