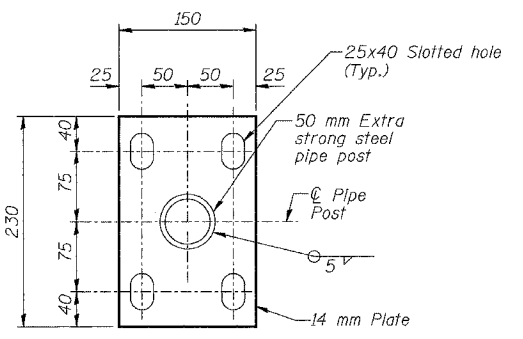
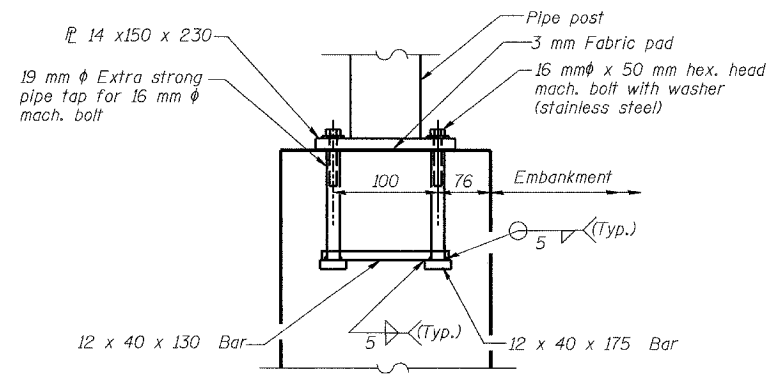
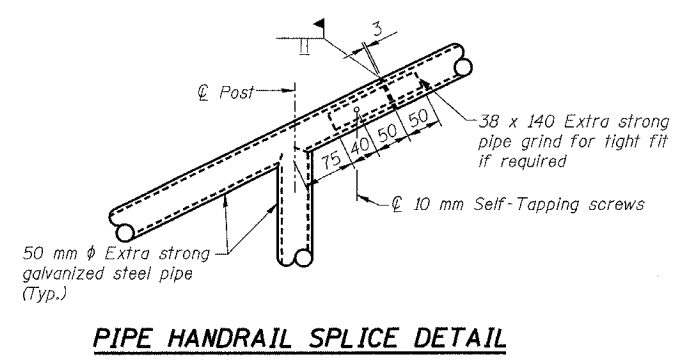
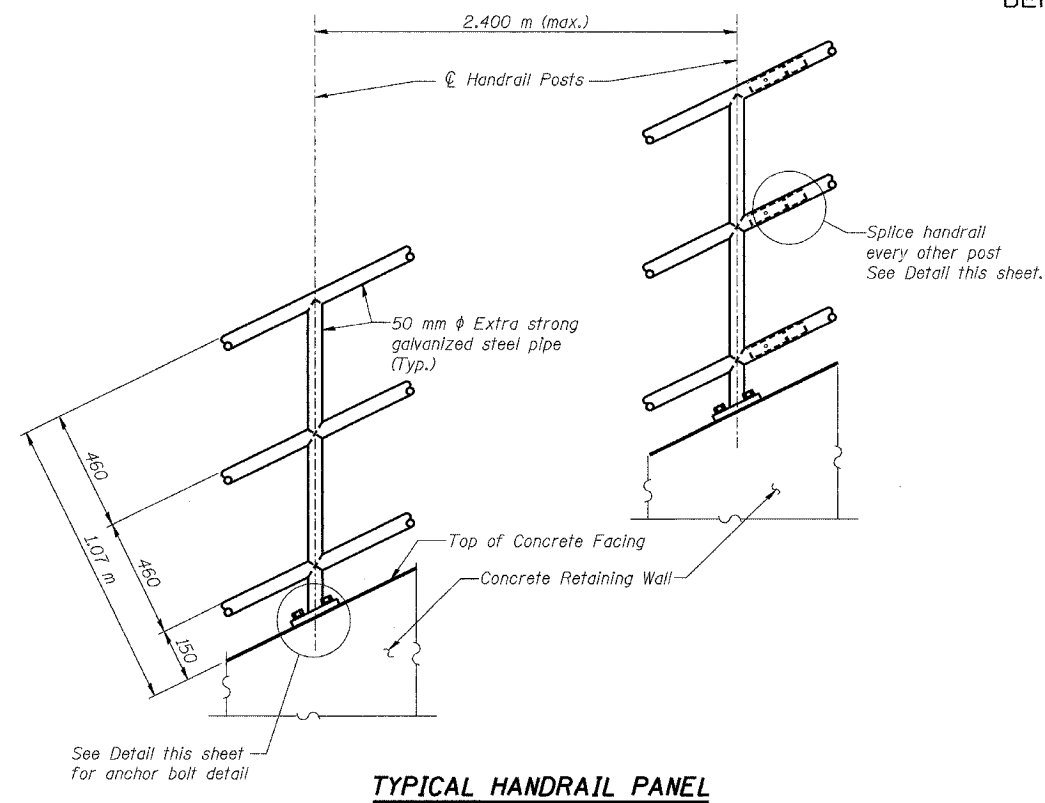


STATE OF ILLINOIS
DEPARTMENT OF TRANSPORTATION

ROUTE NO.	SECTION	COUNTY	TOTAL SHEETS	SHEET NO.
FAP 337 (IL 22)	BR-1	LAKE	800	575
FED. ROAD DIST. NO.	ILLINOIS	FED. AID PROJECT		



NOTES:

1. All dimensions are in millimeters (mm) except as noted.
2. See Sheet 1 of 23 for Limits of Pipe Handrail, Special.
3. The Contractor shall coordinate with the Pipe Handrail fabricator for the as-built locations of the posts prior to fabricating Pipe Handrail. Post spacing shall be a maximum of 2.4 m and insure a 100 mm minimum clearance from anchor bolts to edge of concrete.
4. Railing, posts, base plates and bolts, nuts and washers for pipe handrail connections shall be galvanized (See Special Provisions).
5. All Pipe Handrail bends shall be made with an inside Radius of 150 mm.
6. Bent Railing should not be ordered until Field Verification of Final As-Built Wall Geometry.
7. The quantity shown for Pipe Handrail, Special on Sheet 2 of 23 includes one rail length per meter along the top of the wall. See Special Provisions.

ANCHOR BOLT DETAIL FOR HANDRAIL POST

BASE PLATE FOR HANDRAIL POST

PIPE HANDRAIL, SPECIAL DETAILS

Date	Designed	TDN	F.A.P. RTE. 337 (IL. RTE. 22) SECTION 19R-1 WEST OF U.S. 12 TO EAST OF BEUSCHING ROAD LAKE COUNTY STATION 8+752.493 TO 8+883.521 STRUCTURE NO. 049-W029	Sheet No.
Revisions	Drawn	BKN		16
	Checked	KWB		
	Approved	KWB		
			of 23	
			URS Job No. 2100001385.01	