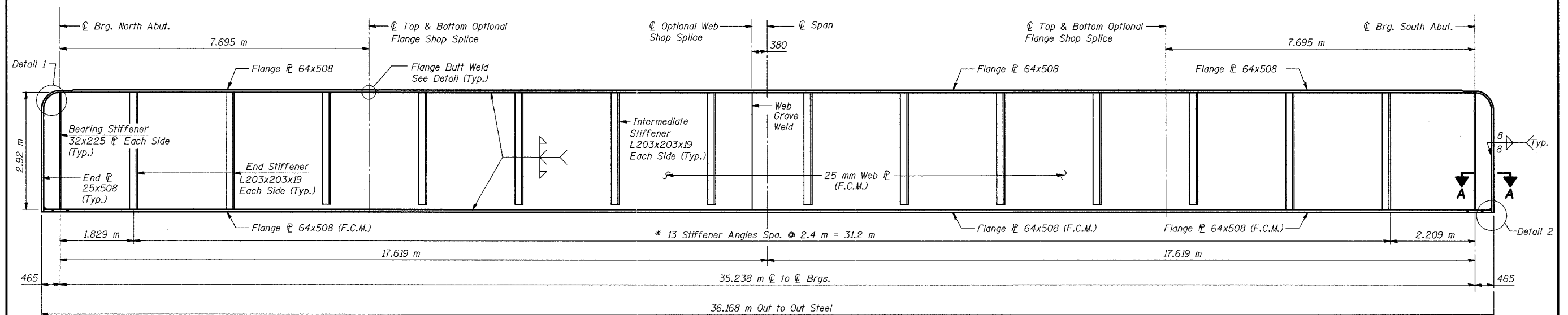


STATE OF ILLINOIS
DEPARTMENT OF TRANSPORTATION

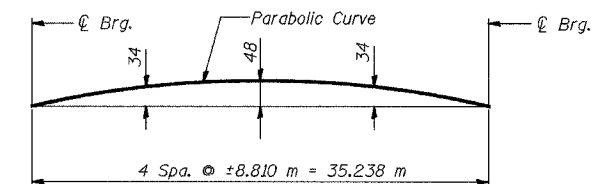
ROUTE NO.	SECTION	COUNTY	TOTAL SHEETS	SHEET NO.
F.A.P. 337	(BR-D)	LAKE	800	591
FED. ROAD DIST. NO.	ILLINOIS	FED. AID PROJECT-		

SHEET NO. 9
37 SHEETS



THROUGH-GIRDER ELEVATION

* Stiffener Spacing Measured to \mathcal{C} of Kneebrace



CAMBER DIAGRAM

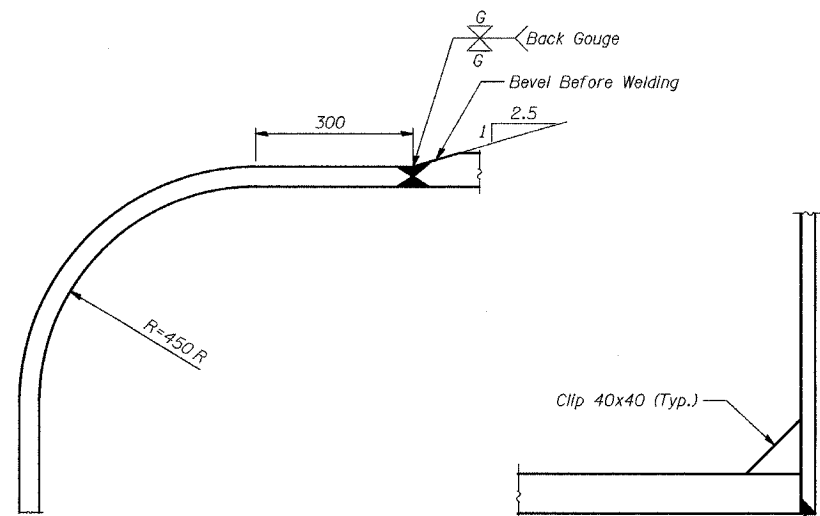
***BOTTOM OF GIRDER WEB ELEVATIONS**

Location	West Girder	East Girder
\mathcal{C} Brg. North Abutment	263.817	263.824
\mathcal{C} Brg. South Abutment	263.757	263.764

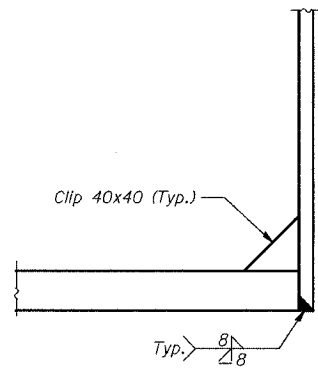
*For Fabrication Only

Notes:

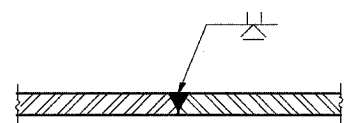
- All dimensions are in millimeters (mm) except as noted.
- Work this sheet with sheets 8 & 10 through 14.
- F.C.M Indicates Fracture Critical Member.
- Girder flanges and webs, floorbeams, connection plates, floor plates, ballast plates and bearing stiffeners shall be AASHTO M 270M Grade 345 unless otherwise shown.
- The Submerged arc welding (SAW) process only shall be used for the butt splices of the through girder webs and flanges.
- The optional splices are subject to the approval of the Engineer.



DETAIL 1

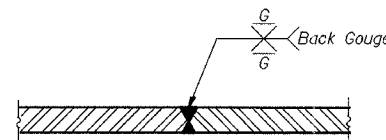


DETAIL 2



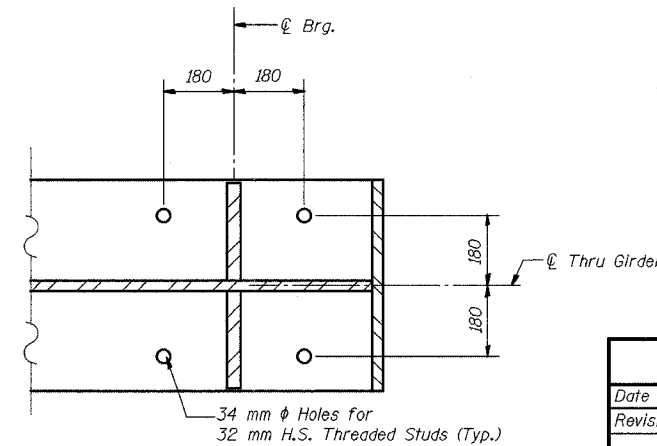
WEB GROVE WELDED BUTT JOINT

(For Optional Splice)



FLANGE GROVE WELDED BUTT JOINT

(For Optional Splice)



SECTION A-A

THROUGH GIRDER ELEVATION			
Date	Designed	EV	ELGIN, JOLIET & EASTERN R.W. CO. BRIDGE OVER ILLINOIS ROUTE 22 F.A.P. ROUTE 337 SECTION (BR-D) LAKE COUNTY STATION 32+61.151 STRUCTURE NO. 049-0188
Revisions	Drawn	EV	
	Checked	NPP	
	Approved	NPP	
	Prepared By:	URS	
			Sheet No. 9 of 37