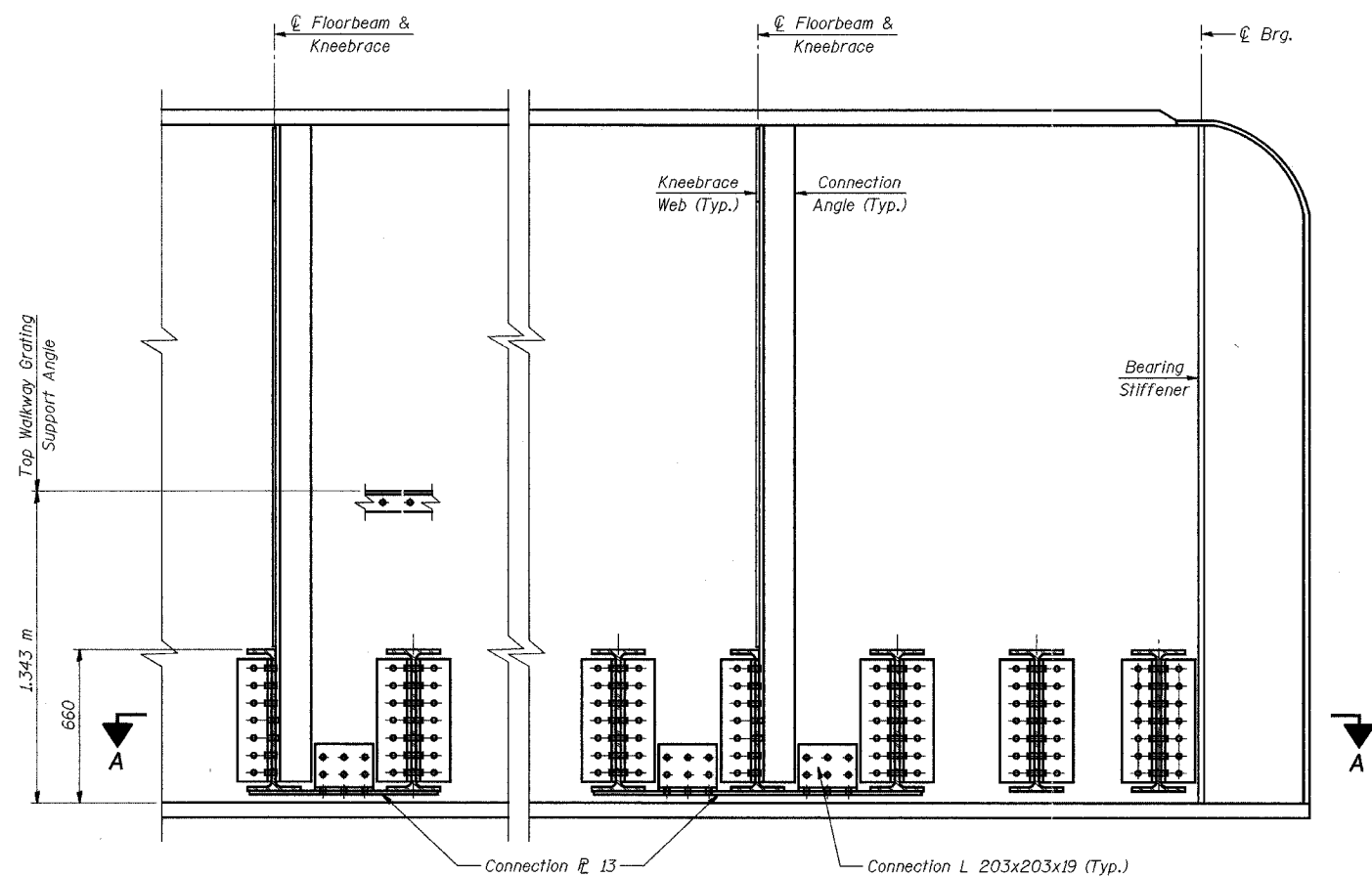


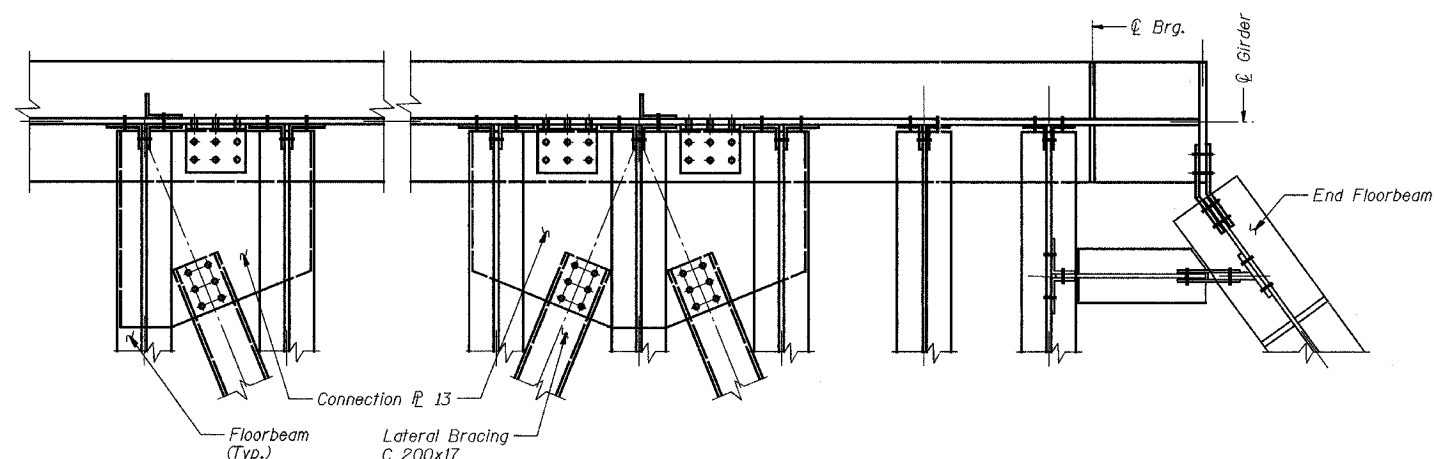
STATE OF ILLINOIS  
DEPARTMENT OF TRANSPORTATION

ROUTE NO.	SECTION	COUNTY	TOTAL SHEETS	SHEET NO.
F.A.P. 337	19R-1	LAKE	800	594
FED. ROAD DIST. NO.	ILLINOIS	FED. AID PROJECT-		

SHEET NO. 12  
37 SHEETS



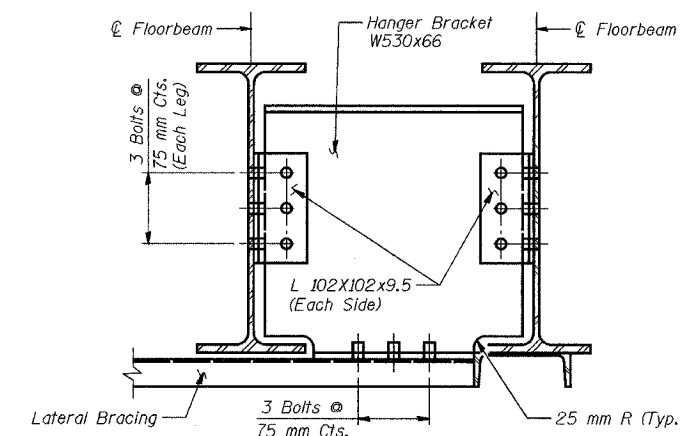
**PARTIAL THROUGH - GIRDER ELEVATION**



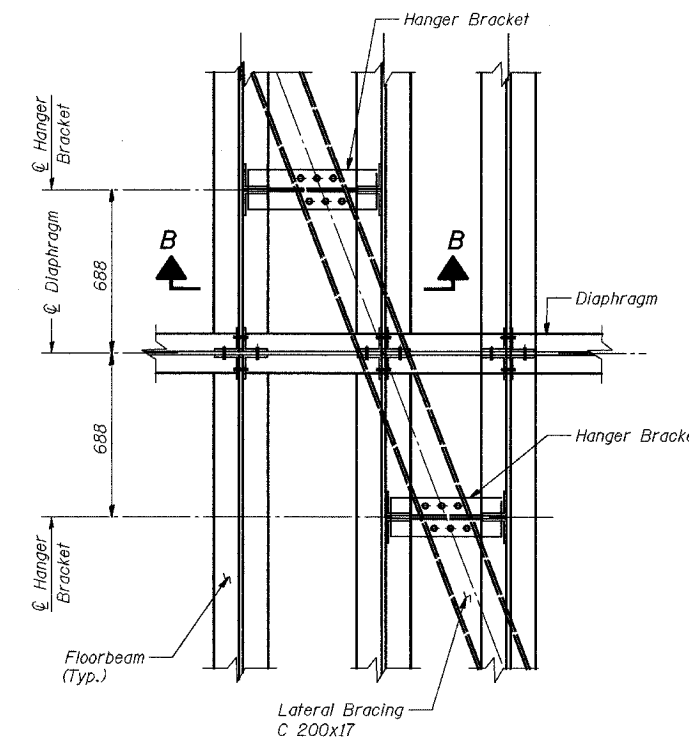
**SECTION A-A**

Notes:

- All dimensions are in millimeters (mm) except as noted.
- Work this sheet with sheets 10, 11 and 15.
- All material shall be AASHTO M 270M Grade 345 (ASTM A 709M Grade 345) unless noted otherwise.



**SECTION B-B**



**TYPICAL BRACING PLAN**

LATERAL BRACING DETAILS				Sheet No.
Date	Designed	EV	<b>ELGIN, JOLIET &amp; EASTERN Rwy. CO. BRIDGE OVER ILLINOIS ROUTE 22 F.A.P. ROUTE 337 SECTION (19R-1) LAKE COUNTY STATION 32+61.151 STRUCTURE NO. 049-0188</b>	<b>12</b> of 37
Revisions	Drawn	EV		
	Checked	NPP		
	Approved	NPP		
	Prepared By:	URS		