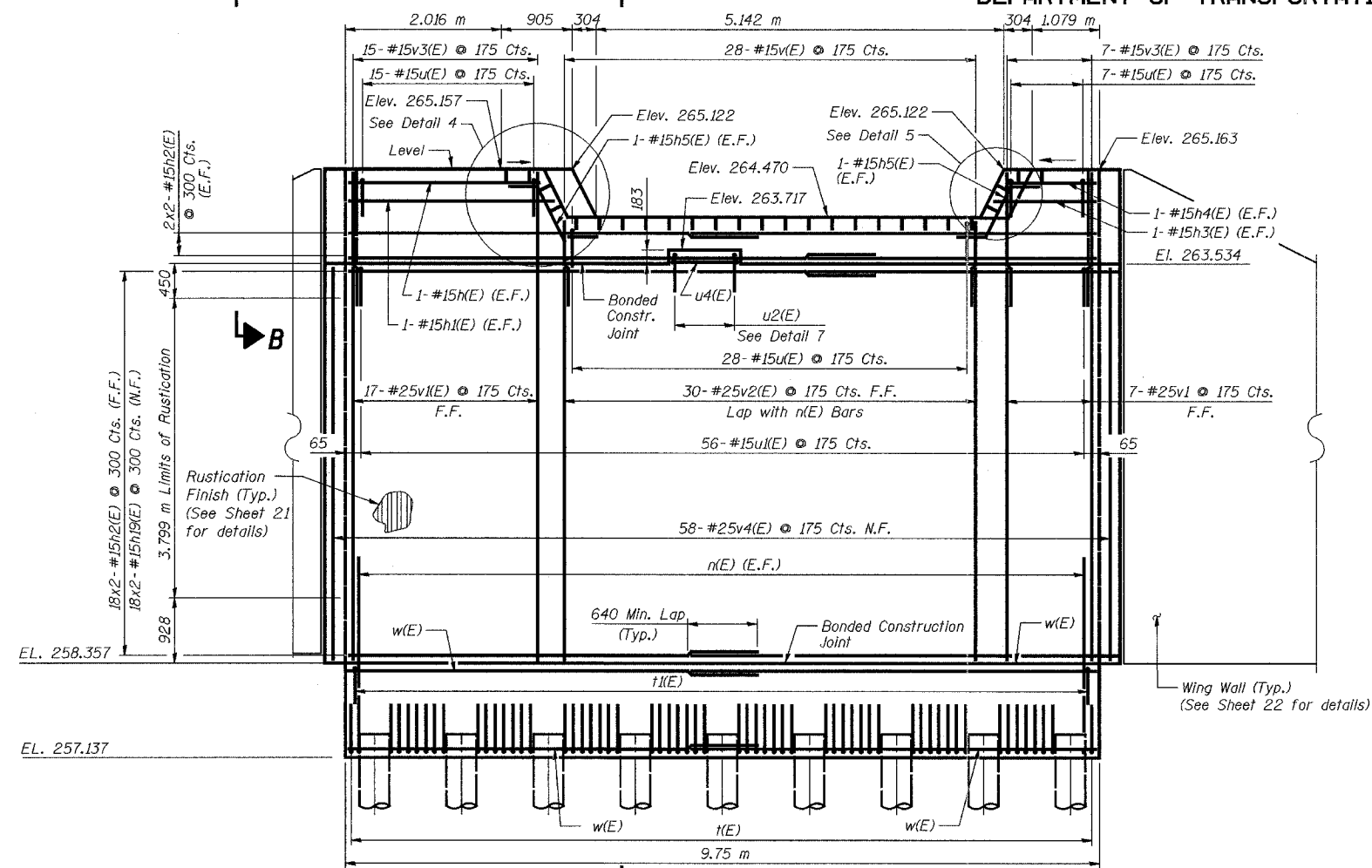


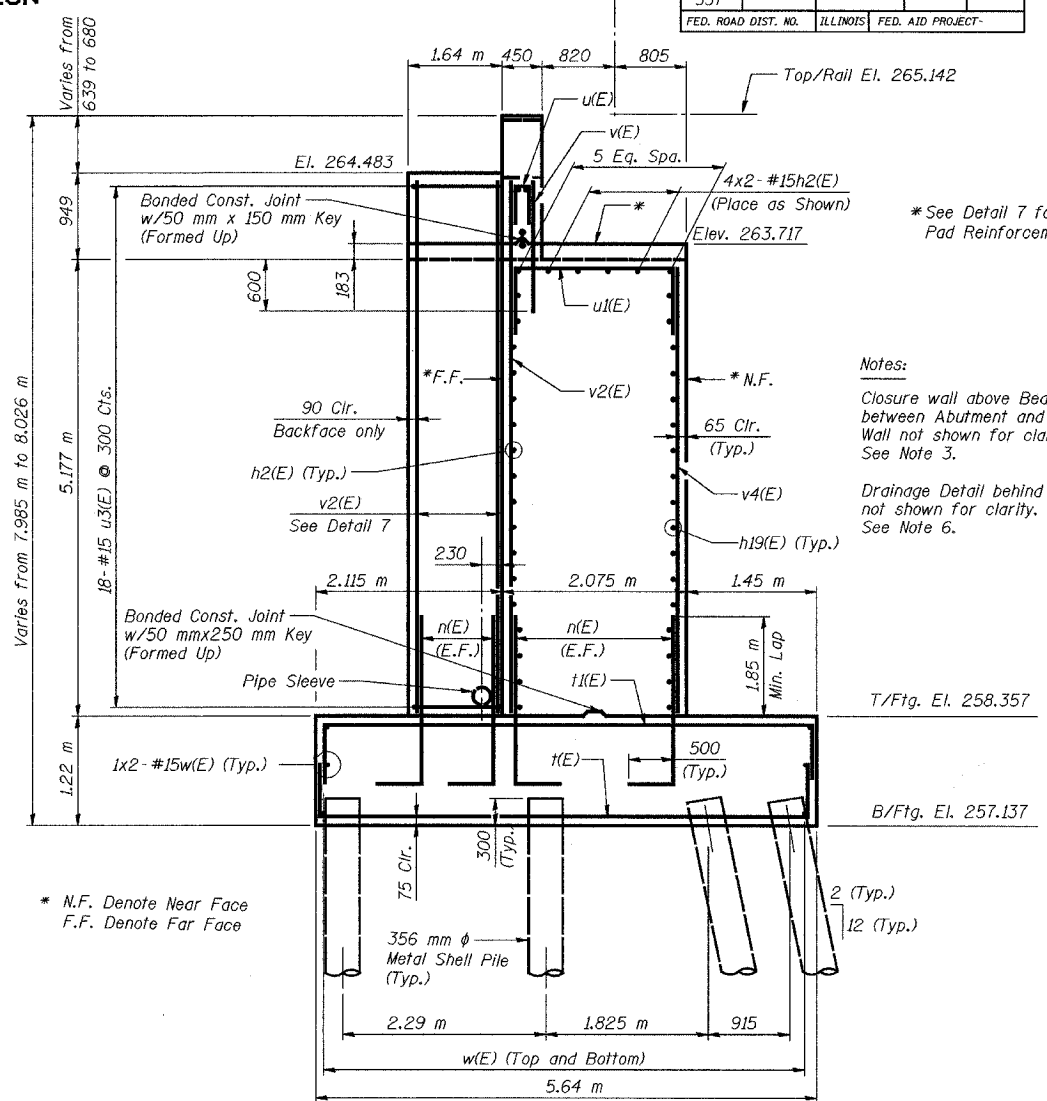
STATE OF ILLINOIS
DEPARTMENT OF TRANSPORTATION

ROUTE NO.	SECTION	COUNTY	TOTAL SHEETS	SHEET NO.
F.A.P. 337	(BR-D)	LAKE	800	601
FED. ROAD DIST. NO.	ILLINOIS	FED. AID PROJECT-		

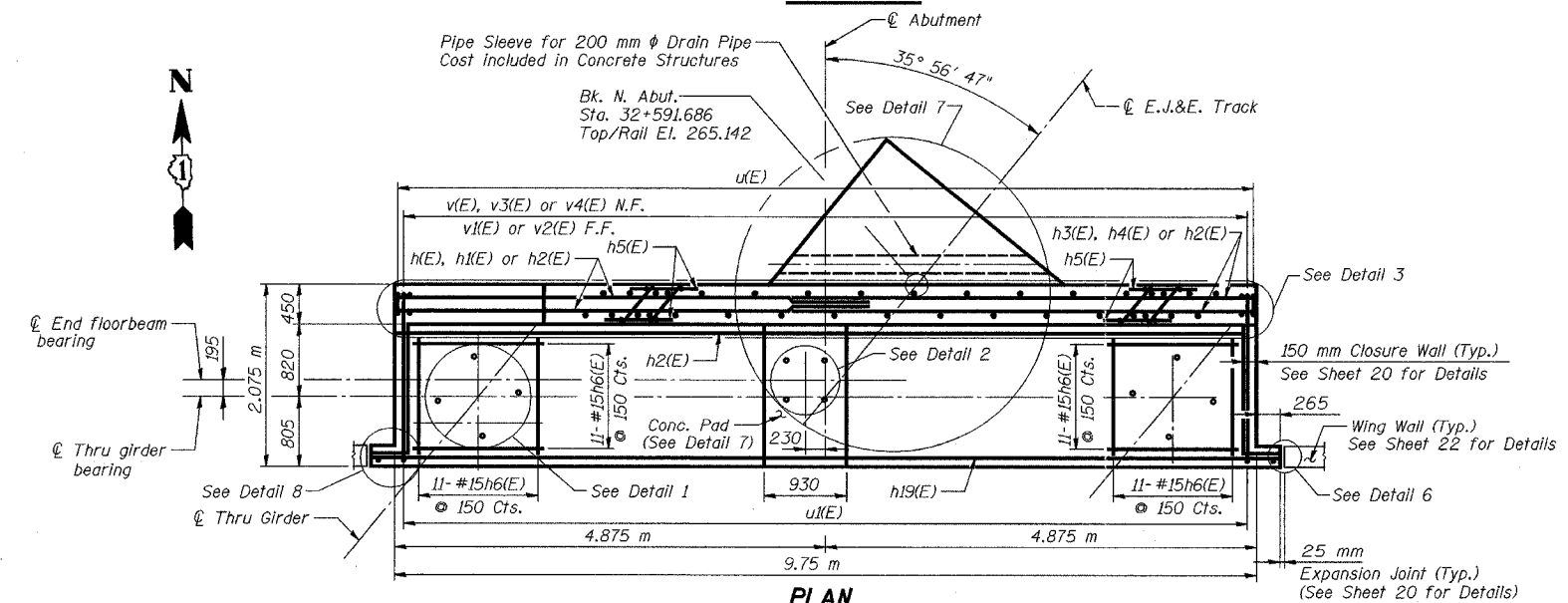
SHEET NO. 19
37 SHEETS



A ELEVATION



SECTION A-A



PLAN

NOTES:

1. Work this Sheet with Sheets 20 through 22.
2. Reinforcement Bars designated (E) shall be Epoxy Coated.
3. See Sheet 20 for Details 3, 4, 5 and 6, Section B-B and Closure Wall Details.
4. See Sheet 21 for Bill of Materials, Bar Details, Details 1, 2, 7 and Rustication Finish Detail.
5. See Sheet 22 for Wing Wall Details.
6. See Sheet 18 for Drainage Details.
7. All dimensions are in millimeters (mm) except as noted.
8. Space Reinforcement to miss anchor bolts.
9. Pour Concrete Pad monolithically with stem.
10. Min. Lap for bars #15 is 640 mm, #20 is 790 mm.
11. Bar indicated thus 5x2-#20 etc. indicates 5 lines of bars with 2 lengths per line.
12. See Sheet 21 for Detail 8.

NORTH ABUTMENT PLAN, ELEVATION & SECTION

Date	Designed	EV	ELGIN, JOLIET & EASTERN R.W. CO. BRIDGE OVER ILLINOIS ROUTE 22 F.A.P. ROUTE 337 SECTION (BR-D) LAKE COUNTY STATION 32+611.151 STRUCTURE NO. 049-0188	Sheet No.	
Revisions	Drawn	EV		19	of 37
	Checked	NPP			
	Approved	NPP			
	Prepared By:	URS			