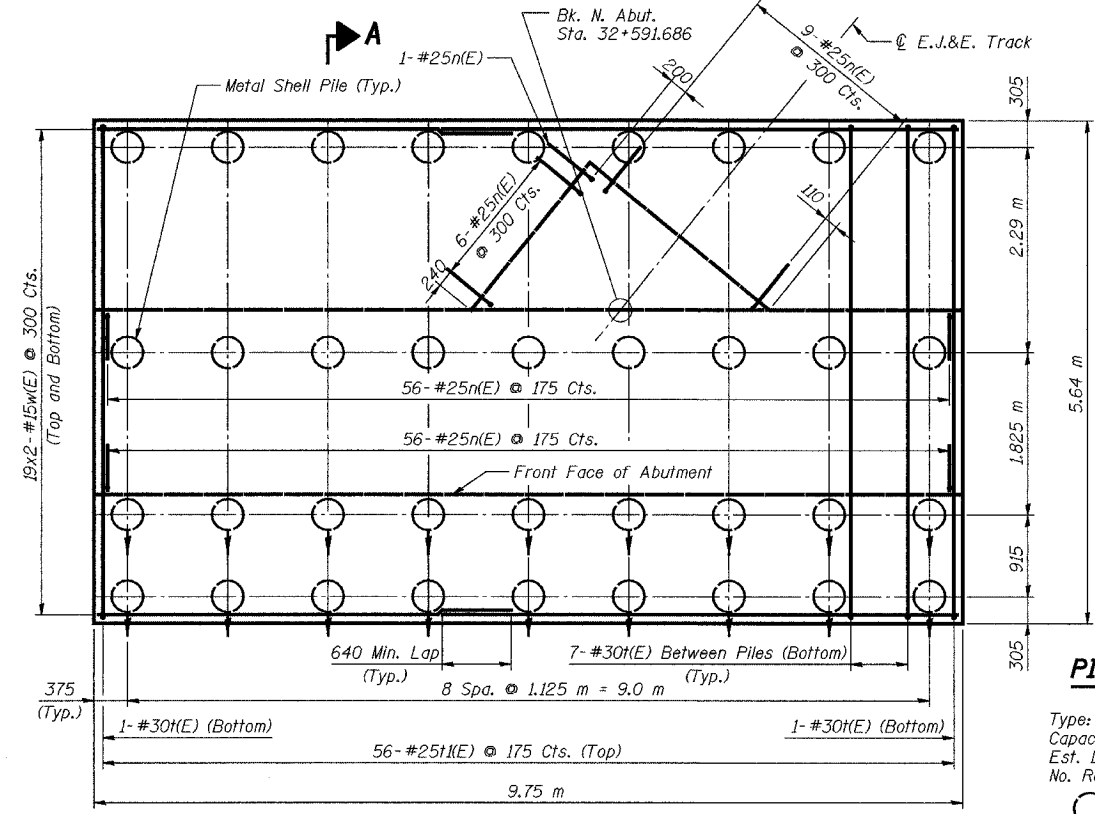


| ROUTE NO. | SECTION | COUNTY | TOTAL SHEETS | SHEET NO. |
|---------------------|----------|-------------------|--------------|-----------|
| F.A.P. 337 | 19R-D | LAKE | 800 | 602 |
| FED. ROAD DIST. NO. | ILLINOIS | FED. AID PROJECT- | | |

SHEET NO. 20
37 SHEETS

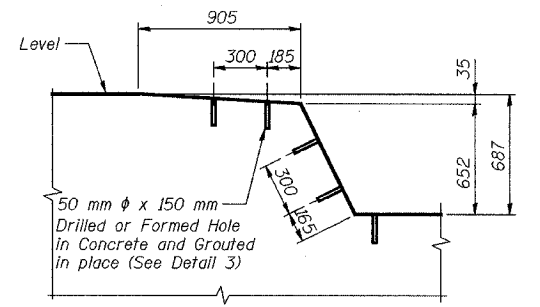
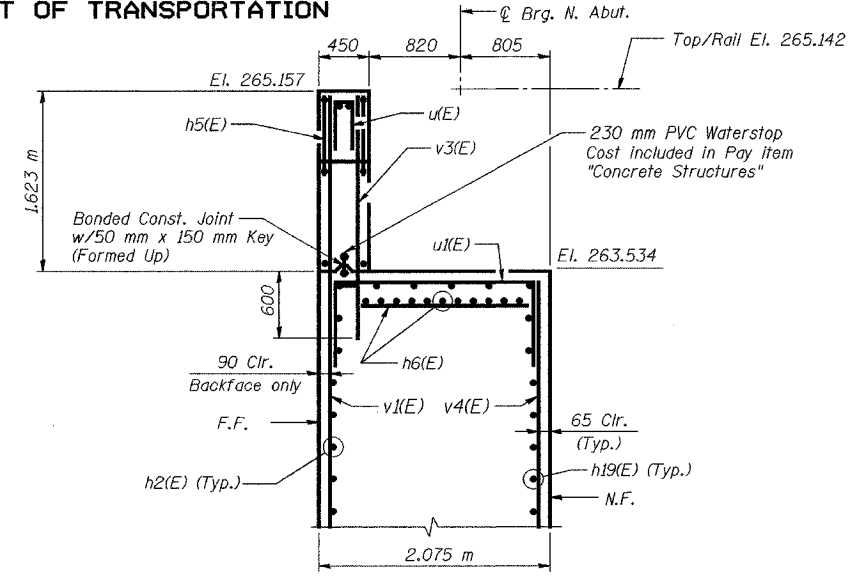
STATE OF ILLINOIS
DEPARTMENT OF TRANSPORTATION



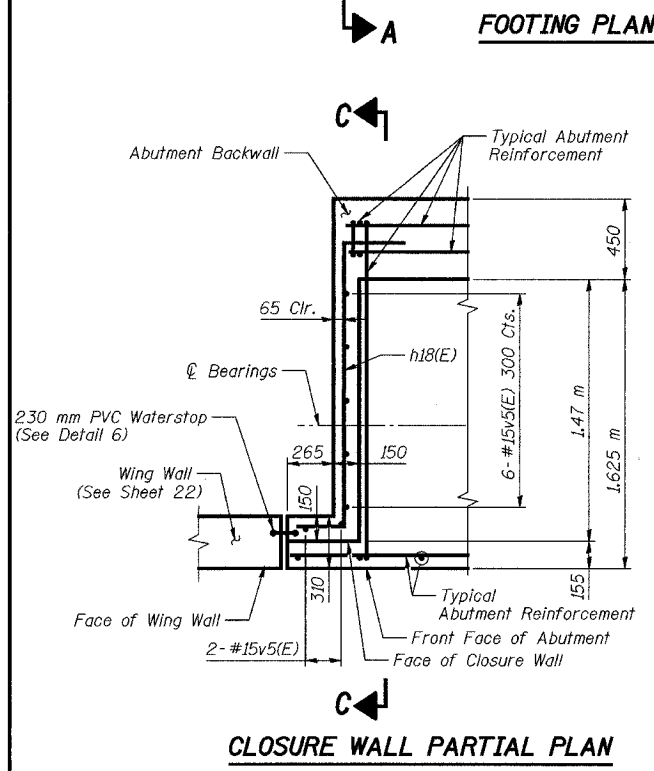
PILE DATA

Type: 356 mm ϕ Metal Shell
Capacity: 500 kN
Est. Length: 14.2 m
No. Required: 35+1 (Test Pile)

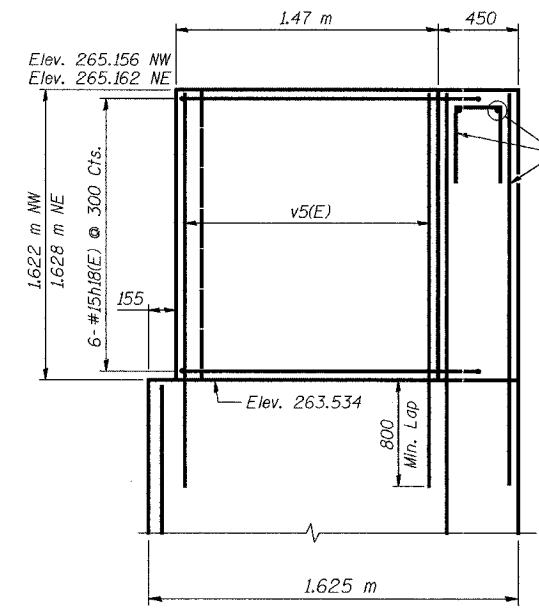
Direction of Pile Batter



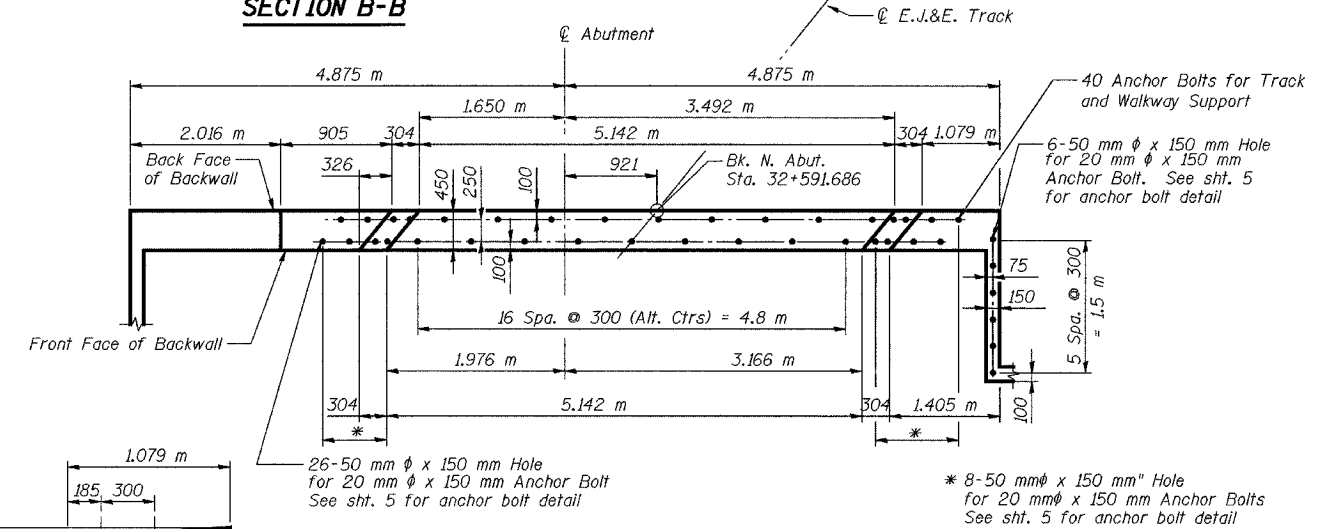
DETAIL 4
(at Back of Abutment)



CLOSURE WALL PARTIAL PLAN

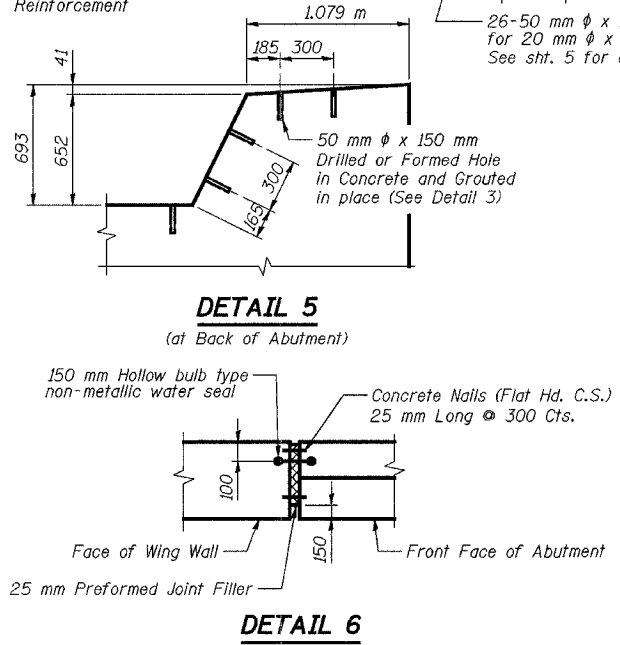


SECTION C-C



DETAIL 3

- NOTES:**
1. Work this Sheet with Sheet 19 and Sheets 21 through 23.
 2. See Sheet 21 for Bill of Materials and Bar Details.
 3. Reinforcement Bars designated (E) shall be Epoxy Coated
 4. See Sheet 19 for Section A-A, location of Details 3, 4 and 5, and Section B-B.
 5. See Sheet 19 for Closure Wall Location.
 6. All dimensions are in millimeters (mm) except as noted.
 7. Min. Lap for bars #15 is 640 mm.
 8. Bar indicated thus 19x2-#15 etc. indicates 19 lines of bars with 2 lengths per line.



DETAIL 5
(at Back of Abutment)

DETAIL 6

| NORTH ABUTMENT DETAILS 1 | | | Sheet No. |
|--------------------------|------------------|--|--------------------|
| Date | Designed EV | ELGIN, JOLIET & EASTERN RY. CO. BRIDGE OVER ILLINOIS ROUTE 22 F.A.P. ROUTE 337 SECTION (19R-D) LAKE COUNTY STATION 32+61.151 STRUCTURE NO. 049-0188 | 20 of 37 |
| Revisions | Drawn EV | | |
| | Checked NPP | | |
| | Approved NPP | | |
| | Prepared By: URS | | |