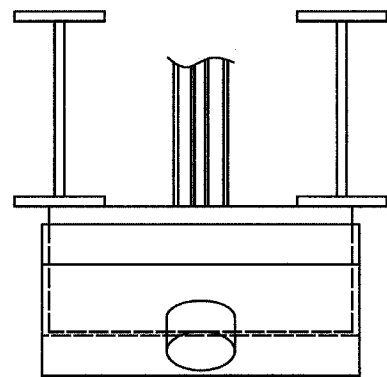


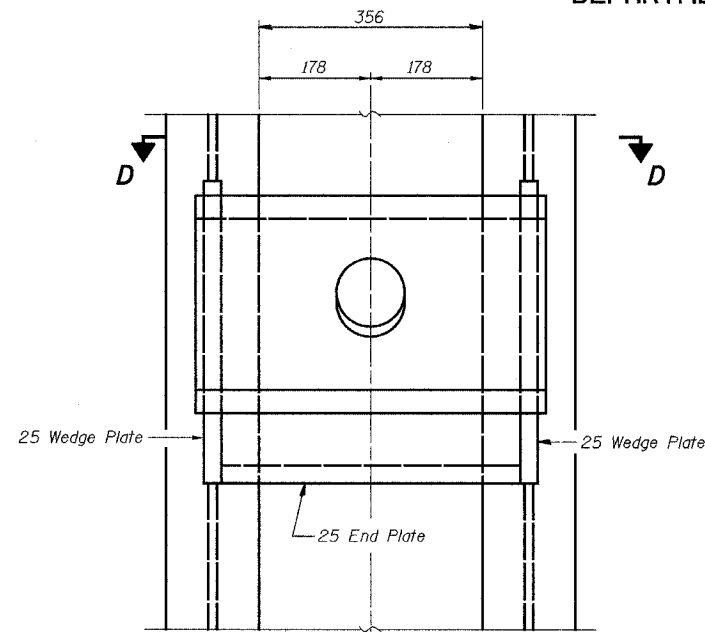
STATE OF ILLINOIS  
DEPARTMENT OF TRANSPORTATION

ROUTE NO.	SECTION	COUNTY	TOTAL SHEETS	SHEET NO.
F.A.P. 337	(19R-1)	LAKE	800	608
FED. ROAD DIST. NO.	ILLINOIS	FED. AID PROJECT-		

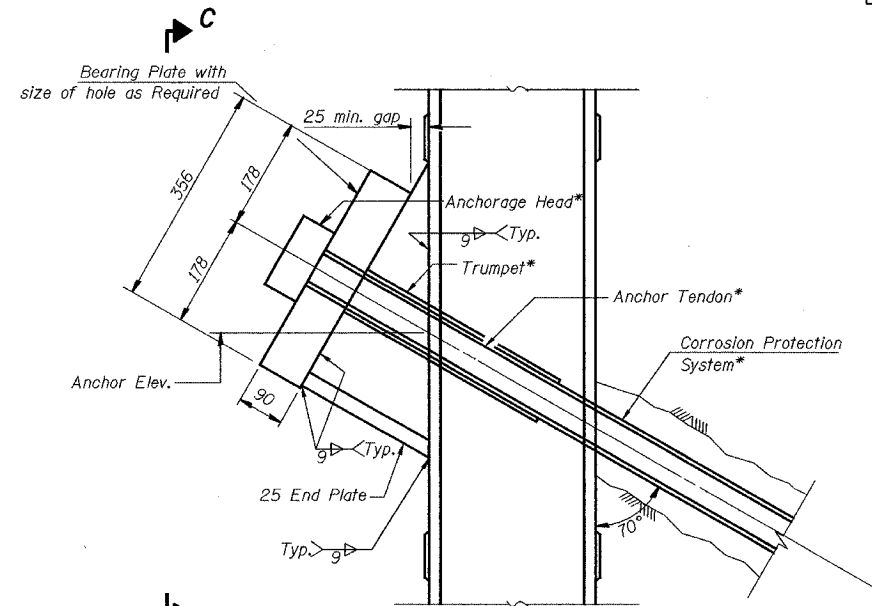
SHEET NO. 26  
37 SHEETS



**SECTION D-D**



**VIEW C-C**

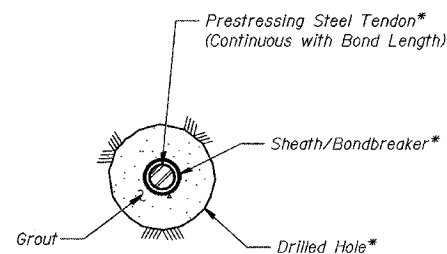


**DETAIL A**

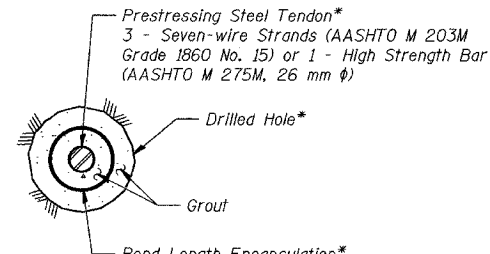
**ANCHOR TABLE**

Pile No.	A (m)	B (m)	P (kN)
2	4.57	3.75	171
3	4.57	5.34	243
4	4.57	7.65	348
5	4.57	9.45	430
6	4.57	9.45	430
7	4.57	7.65	348
8	4.57	5.34	243
9	4.57	3.75	171

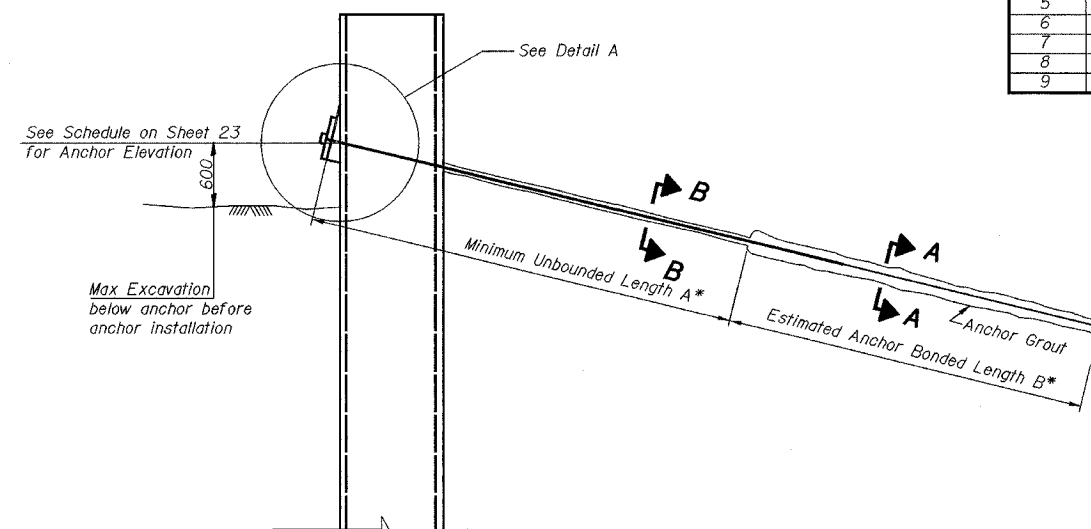
Design Load = P  
Lock off Load = P



**SECTION B-B**  
Anchor Unbonded Length



**SECTION A-A**  
Anchor Bond Length



**SECTION THRU ANCHORED PILE**

**NOTES:**

1. Work this Sheet with Sheets 19 through 25.
2. All dimensions are in millimeters (mm) except as noted.
3. Contractor shall furnish and install Permanent Ground Anchors meeting the requirements for design load, unbonded length, and lock-off load shown on the plans. Items indicated with an asterisk (\*) shall be selected and designed by the Contractor. All materials and work shall be in compliance with the performance specification for Permanent Ground Anchors (See Special Provisions).
4. Cost of furnishing, fabricating and attaching all Structural Steel for Permanent Ground Anchor is included with the cost of "Permanent Ground Anchors".

**NORTH ABUTMENT WING WALLS DETAILS 4**

Date	Designed EV	<b>ELGIN, JOLIET &amp; EASTERN R.W. CO. BRIDGE OVER ILLINOIS ROUTE 22 F.A.P. ROUTE 337 SECTION (19R-1) LAKE COUNTY STATION 32+611.151 STRUCTURE NO. 049-0188</b>	Sheet No. <b>26</b> of 37
Revisions	Drawn EV		
	Checked NPP		
	Approved NPP		
Prepared By: URS			