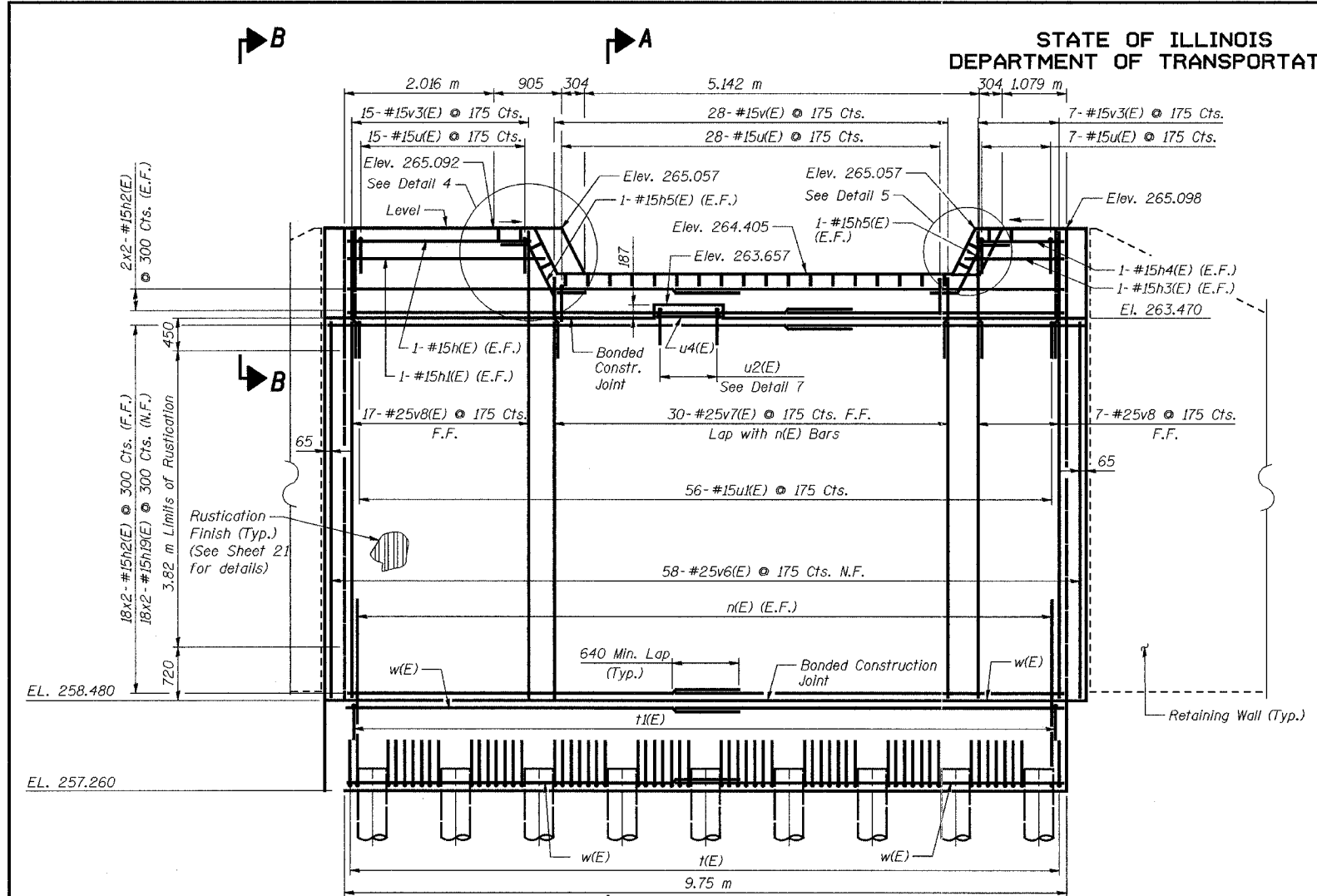


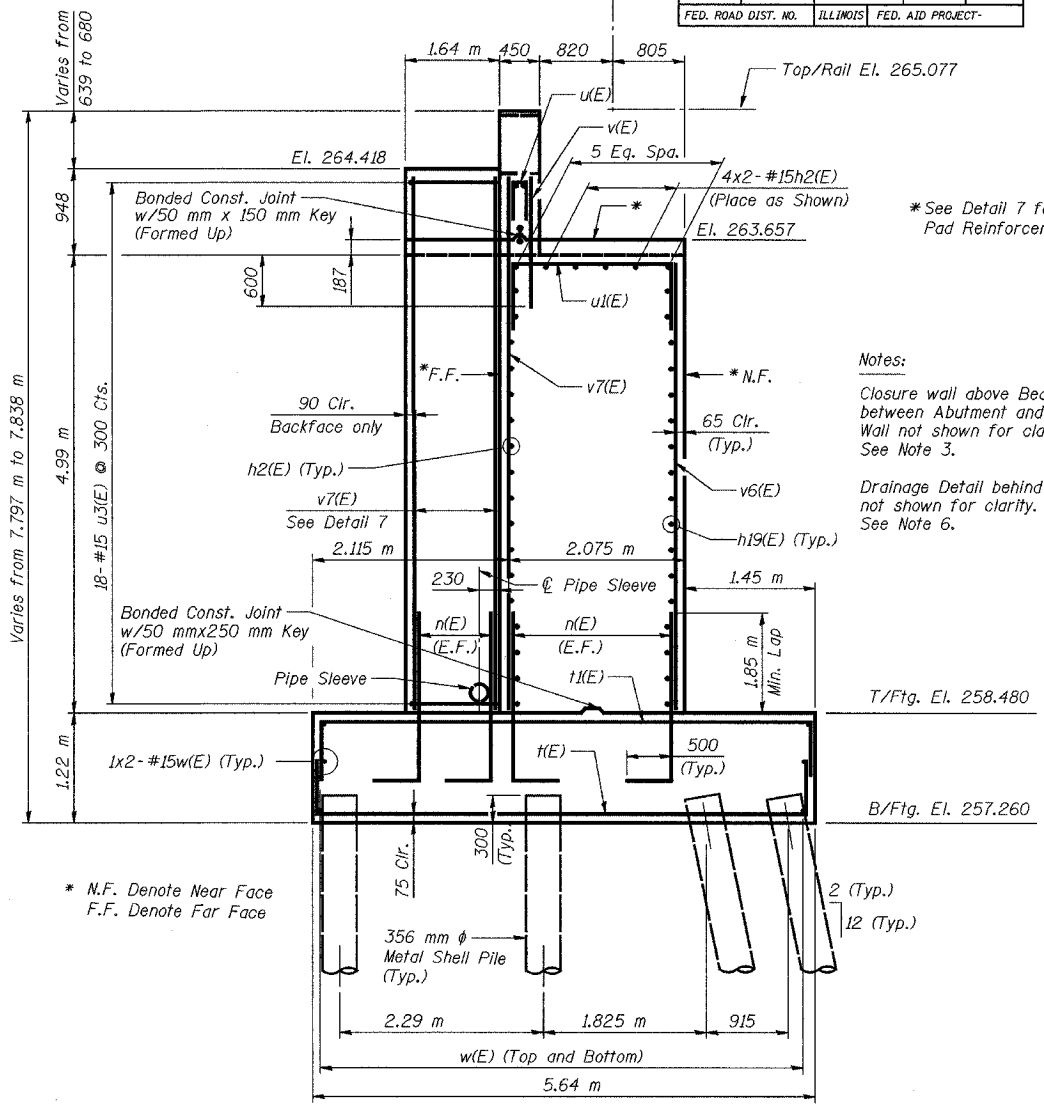
STATE OF ILLINOIS
DEPARTMENT OF TRANSPORTATION

ROUTE NO.	SECTION	COUNTY	TOTAL SHEETS	SHEET NO.
F.A.P. 337	199-D	LAKE	800	609
FED. ROAD DIST. NO.	ILLINOIS	FED. AID PROJECT-		

SHEET NO. 27
37 SHEETS

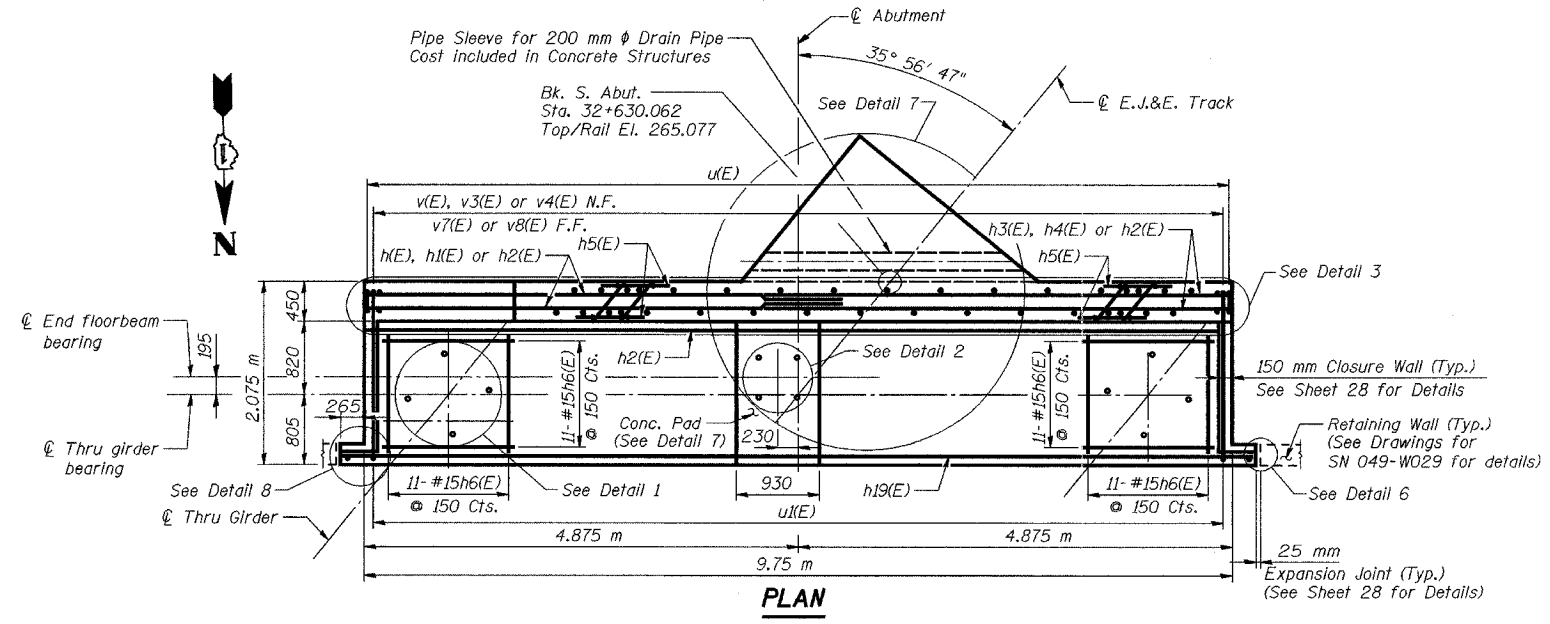


A ELEVATION



SECTION A-A

- NOTES:
1. Work this Sheet with Sheets 21, 28 and 29.
 2. Reinforcement Bars designated (E) shall be Epoxy Coated.
 3. See Sheet 28 for Details 3, 4, 5 and 6, Section B-B and Closure Wall Details.
 4. See Sheet 29 for Bill of Materials, Bar Details, Details 1, 2, 7 and Rustication Finish Details.
 5. See Sheet 18 for Drainage Details.
 6. All dimensions are in millimeters (mm) except as noted.
 7. Space Reinforcement to miss anchor bolts.
 8. Pour Concrete Pad monolithically with stem.
 9. Min. Lap for bars #15 is 640 mm, #20 is 790 mm.
 10. Bar indicated thus 5x2-#20 etc. Indicates 5 lines of bars with 2 lengths per line.
 11. See Sheet 29 for Detail 8.



PLAN

SOUTH ABUTMENT PLAN, ELEVATION & SECTION			
Date	Designed EV	ELGIN, JOLIET & EASTERN RY. CO. BRIDGE OVER ILLINOIS ROUTE 22 F.A.P. ROUTE 337 SECTION (199-D) LAKE COUNTY STATION 32+61.151 STRUCTURE NO. 049-0188	Sheet No.
Revisions	Drawn EV		27
	Checked NPP		of 37
	Approved NPP		
	Prepared By: URS		