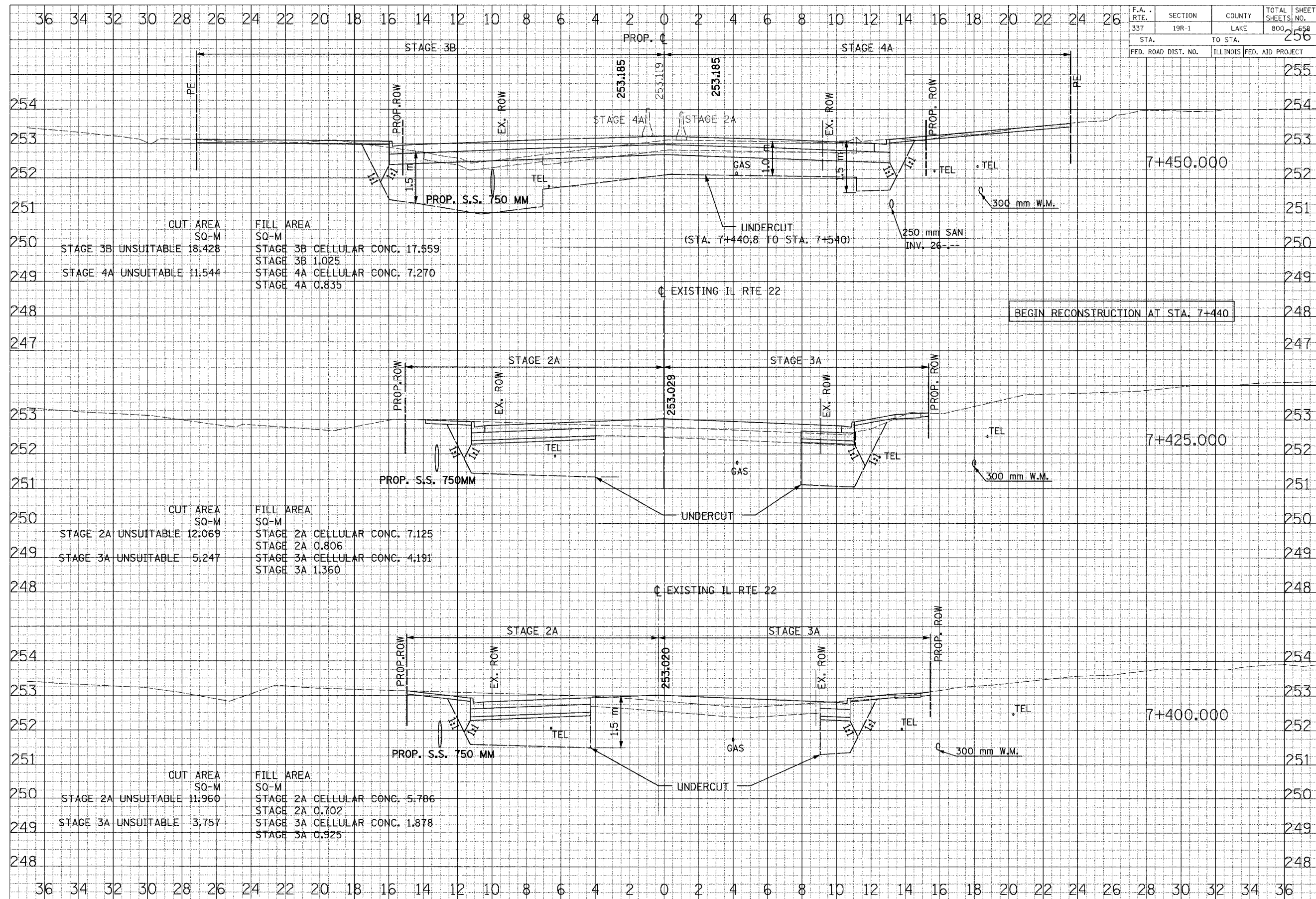


F.A. RTE.	SECTION	COUNTY	TOTAL SHEETS	SHEET NO.
337	19R-1	LAKE	800	658
STA. TO STA.		256		
FED. ROAD DIST. NO.		ILLINOIS	FED. AID PROJECT	



DATE	BY	PROJECT
DESIGNED	CHECKED	APPROVED

DATE	BY	PROJECT
DESIGNED	CHECKED	APPROVED

1 REVISED GEOMETRY FROM STA. 6+922.366 TO STA. 7+440.820 11/24/04 CROSS SECTIONS - ILL ROUTE 22