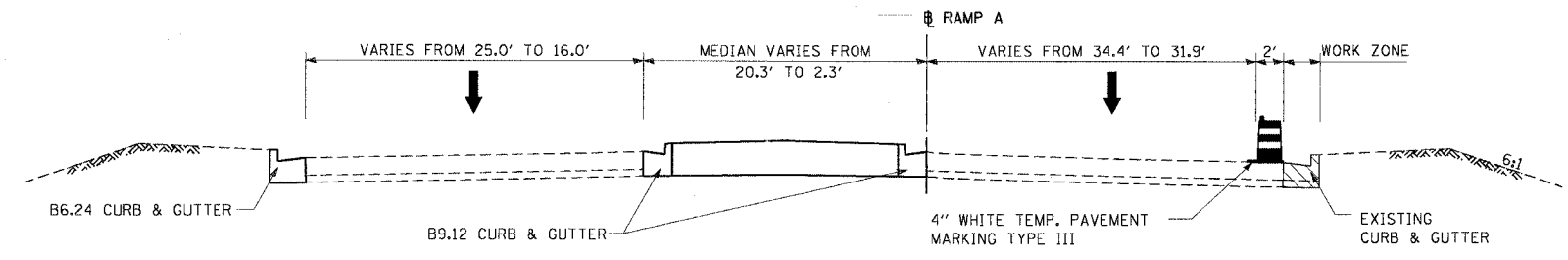
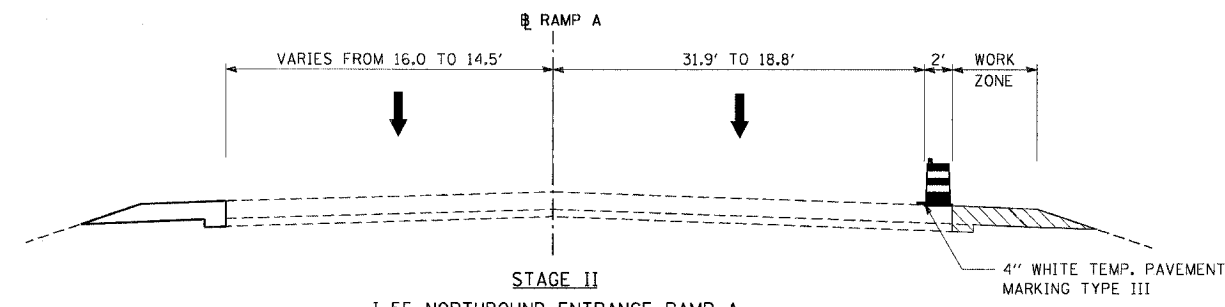


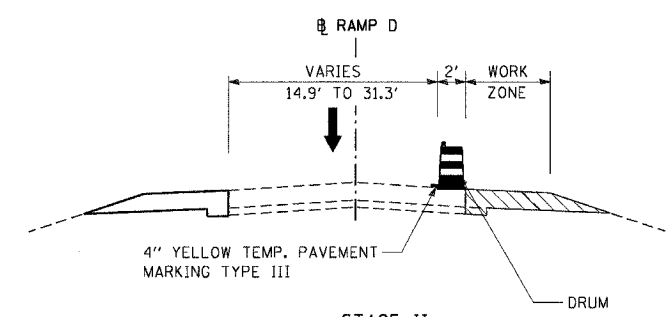
F.A.I. RTE.	SECTION	COUNTY	TOTAL SHEETS	SHEET NO.
55	2002-022 K	WILL	172	30
STA. 10+00		TO STA. 22+96.05		
FED. ROAD DIST. NO.		ILLINOIS FED. AID PROJECT		
CONTRACT NO. 62389				



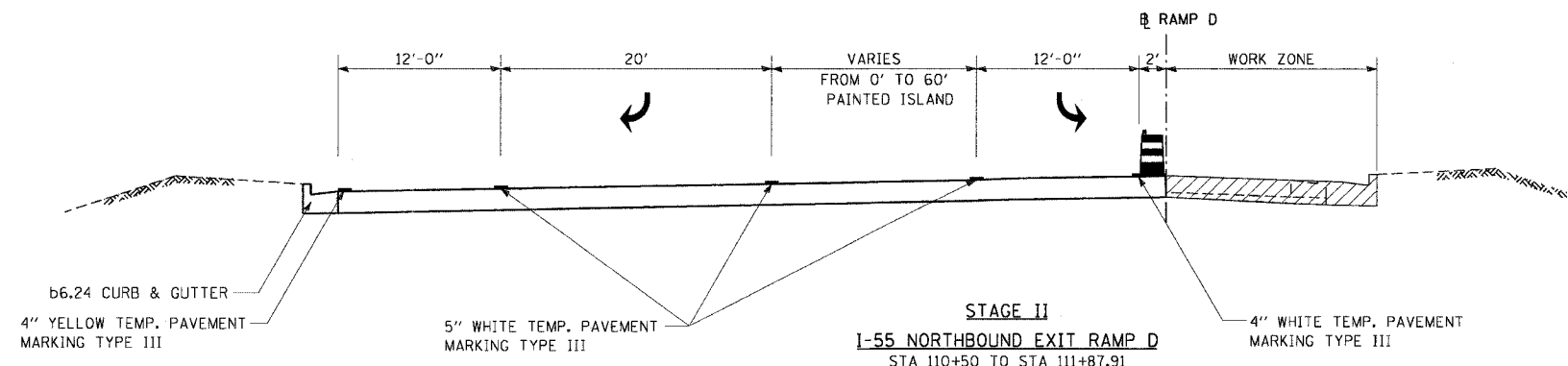
STAGE II
I-55 NORTHBOUND ENTRANCE RAMP A
 STA 300+56.83 TO STA 301+48.27



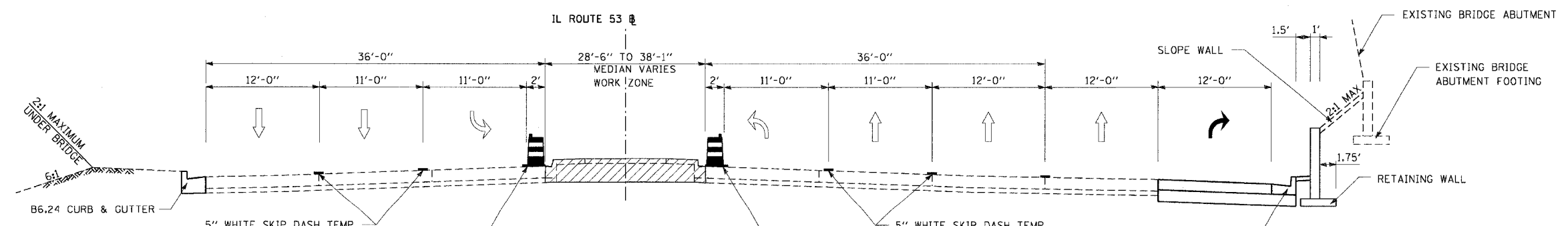
STAGE II
I-55 NORTHBOUND ENTRANCE RAMP A
 STA 301+48.27 TO STA 303+61



STAGE II
I-55 NORTHBOUND EXIT RAMP D
 STA 105+44.60 TO STA 110+50



STAGE II
I-55 NORTHBOUND EXIT RAMP D
 STA 110+50 TO STA 111+87.91



STAGE II
ILLINOIS ROUTE 53
 STA 1460+49 TO STA 1461+87
 STA 1463+09 TO STA 1466+96
 STA 1463+09 TO STA 1466+96

SEQUENCE OF STAGING

1. FOR DETAILS NOT SHOWN, SEE IDOT HIGHWAY STANDARDS IN THE PLANS.

STAGE 2

STAGE 2A
 PLACE TRAFFIC CONTROL AS SHOWN. MAINTAIN TRAFFIC CONTROL ON I-55, PLACING SB EXITING TRAFFIC ONTO AUXILIARY LANE. SHIFT TRAFFIC LANES ON NB AND SB IL-53 TO CONSTRUCT MEDIAN IMPROVEMENTS. CONSTRUCT SB EXIT RAMP B.

STAGE 2B
 REMOVE TEMPORARY PAVEMENT AND PLACE REMAINING MEDIAN AND ISLAND IMPROVEMENTS. CONSTRUCT EXIT RAMP D NORTH WIDENING, ENTRANCE RAMP A NORTH WIDENING.

LEGEND:

PLASTIC DRUMS AS PER DISTRICT STANDARD

PLAN	DATE	BY
REVISIONS	DATE	BY
1		

PROFILE	DATE	BY
REVISIONS	DATE	BY
1		

REVISIONS	
NAME	DATE

ILLINOIS DEPARTMENT OF TRANSPORTATION
 SUGGESTED CONSTRUCTION STAGING
 TYPICAL CROSS SECTIONS
 RAMP A, RAMP D, AND ILLINOIS ROUTE 53
 STAGE 2

DMJM HARRIS
 303 East Wacker Drive, Suite 600
 Chicago, Illinois, 60601 Phone: 312.321.6101 Fax: 312.396.2392

SCALE: N.T.S.
 DATE: 11/8/2004
 DRAWN BY: CC
 CHECKED BY: RI