
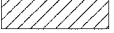





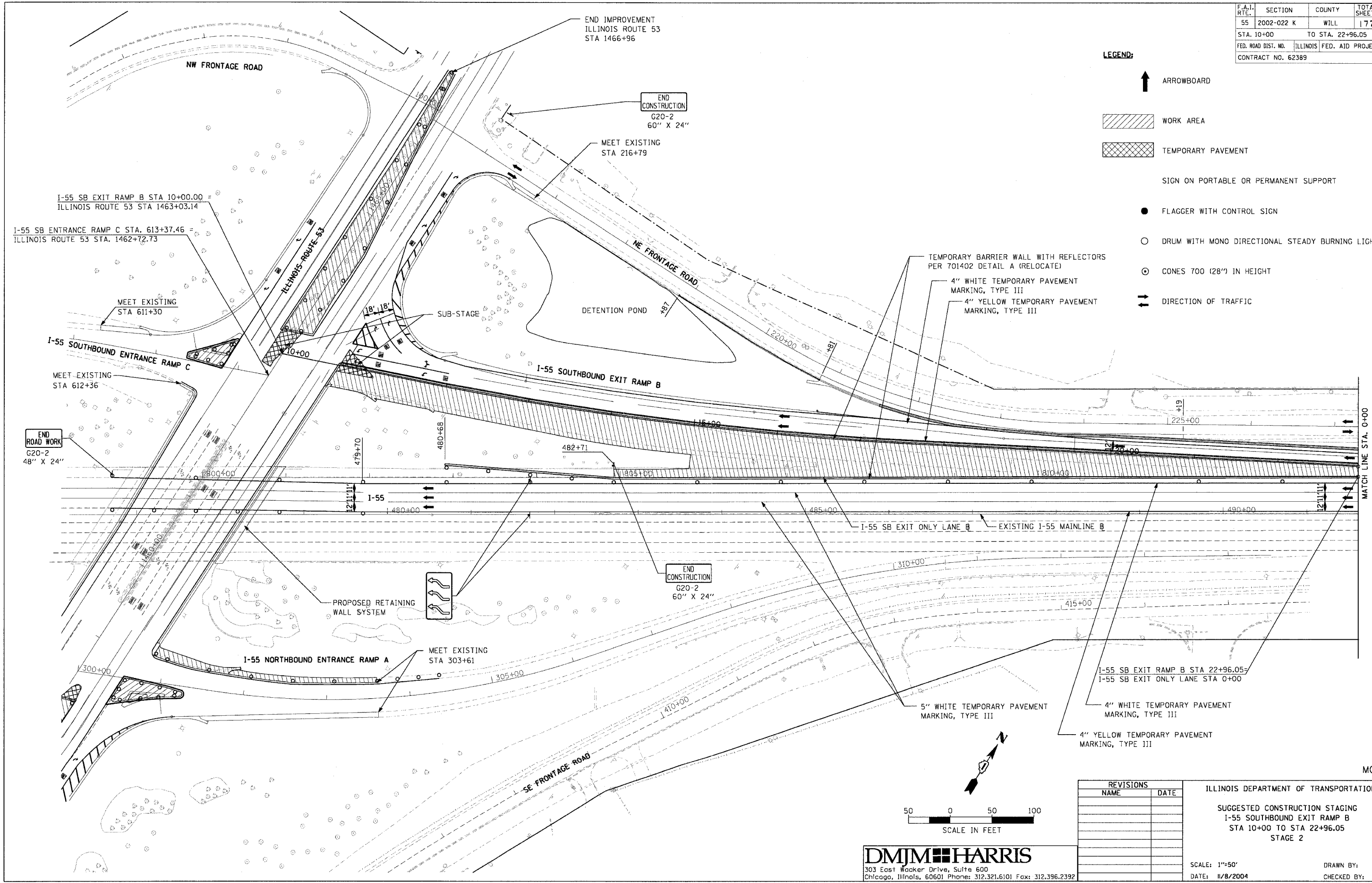


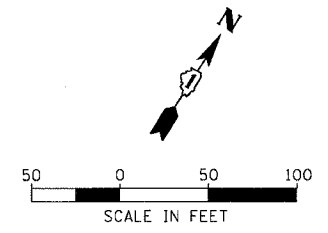
F.A.I. RTE.	SECTION	COUNTY	TOTAL SHEETS	SHEET NO.
55	2002-022 K	WILL	172	31
STA. 10+00		TO STA. 22+96.05		
FED. ROAD DIST. NO.		ILLINOIS	FED. AID PROJECT	
CONTRACT NO. 62389				

- LEGEND:**
-  ARROWBOARD
 -  WORK AREA
 -  TEMPORARY PAVEMENT
 - SIGN ON PORTABLE OR PERMANENT SUPPORT
 -  FLAGGER WITH CONTROL SIGN
 -  DRUM WITH MONO DIRECTIONAL STEADY BURNING LIGHT
 -  CONES 700 (28") IN HEIGHT
 -  DIRECTION OF TRAFFIC



PLAN	DATE	BY
REVISIONS		
NO.	DESCRIPTION	DATE

PROFILE	DATE	BY
REVISIONS		
NO.	DESCRIPTION	DATE



DMJM HARRIS
 303 East Wacker Drive, Suite 600
 Chicago, Illinois, 60601 Phone: 312.321.6101 Fax: 312.396.2392

REVISIONS	
NAME	DATE

ILLINOIS DEPARTMENT OF TRANSPORTATION
 SUGGESTED CONSTRUCTION STAGING
 I-55 SOUTHBOUND EXIT RAMP B
 STA 10+00 TO STA 22+96.05
 STAGE 2

SCALE: 1"=50'
 DATE: 11/8/2004

DRAWN BY: CC
 CHECKED BY: RI

MOT-11