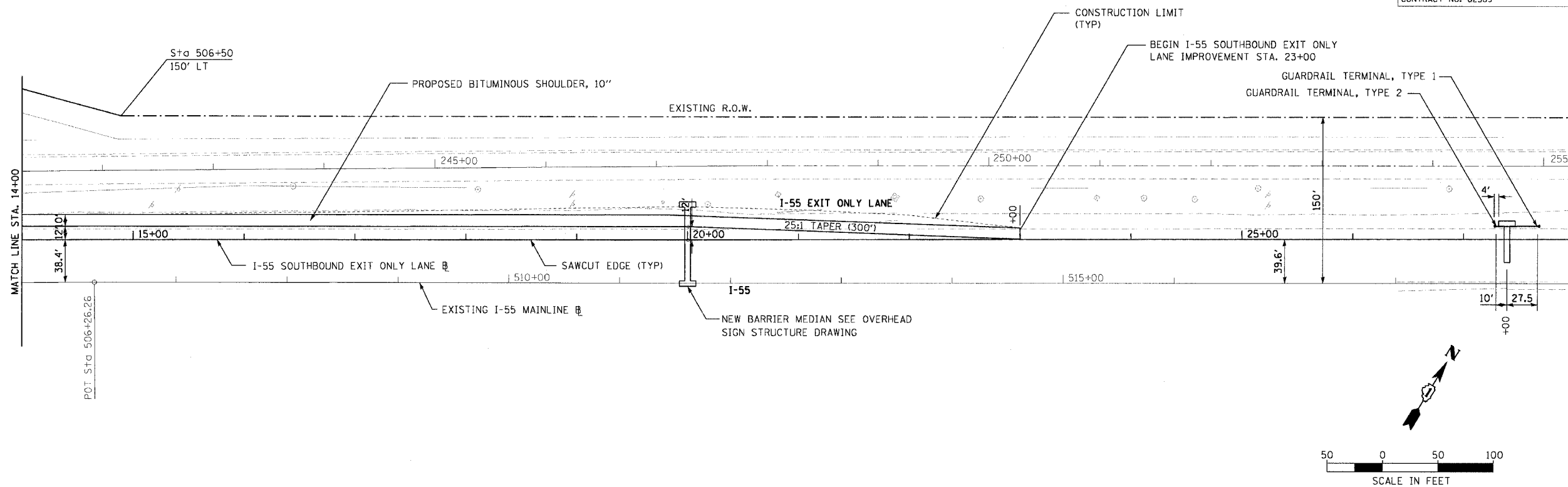
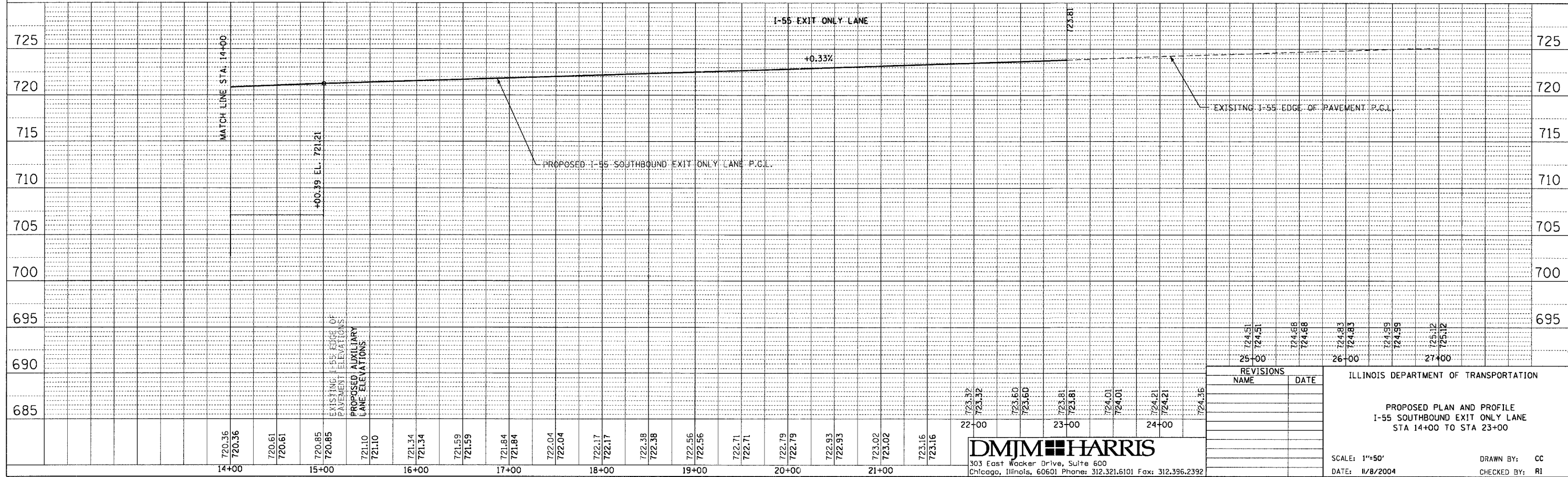


F.A.I. RTE.	SECTION	COUNTY	TOTAL SHEETS	SHEET NO.
55	2002-022 K	WILL.	172	39
STA. 14+00		TO STA. 23+00		
FED. ROAD DIST. NO.		ILLINOIS FED. AID PROJECT		
CONTRACT NO. 62389				



DATE	
BY	
REVISIONS	
PLAN	
NOTE BOOK	
ADD. FILE NAME	
NO.	

DATE	
BY	
REVISIONS	
PROFILE	
NOTE BOOK	
STRUCTURE NOTATIONS CHECKED	
NO.	



REVISIONS		ILLINOIS DEPARTMENT OF TRANSPORTATION	
NAME	DATE		
		<b>PROPOSED PLAN AND PROFILE</b> <b>I-55 SOUTHBOUND EXIT ONLY LANE</b> <b>STA 14+00 TO STA 23+00</b>  SCALE: 1"=50' DATE: 11/8/2004 DRAWN BY: CC CHECKED BY: RI	

**DMJM HARRIS**  
 303 East Wacker Drive, Suite 600  
 Chicago, Illinois, 60601 Phone: 312.321.6101 Fax: 312.396.2392