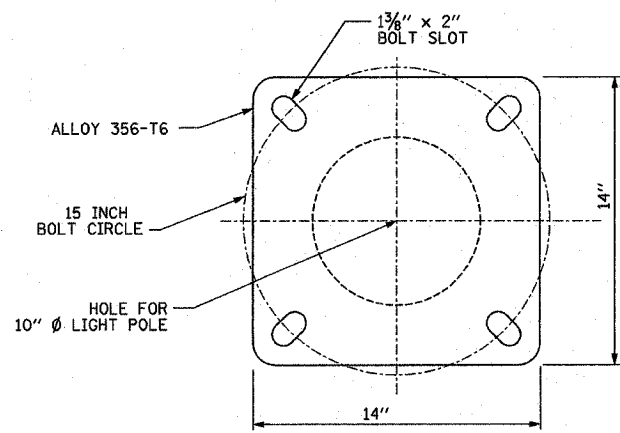


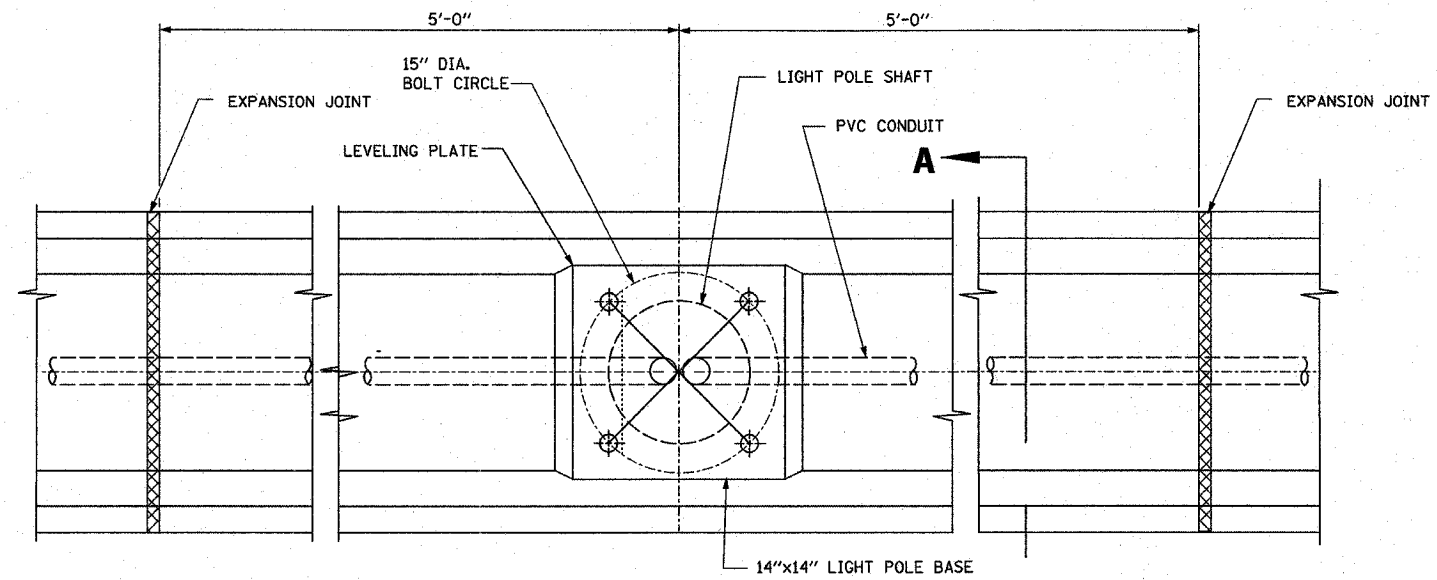
F.A.T. RTE.	SECTION	COUNTY	TOTAL SHEETS	SHEET NO.
55	2002-022 K	WILL	172	76
STA.	TO STA.			
FED. ROAD DIST. NO.	ILLINOIS	FED. AID PROJECT		
CONTRACT # 62389				

DATE	BY
DATE	BY
DATE	BY
DATE	BY

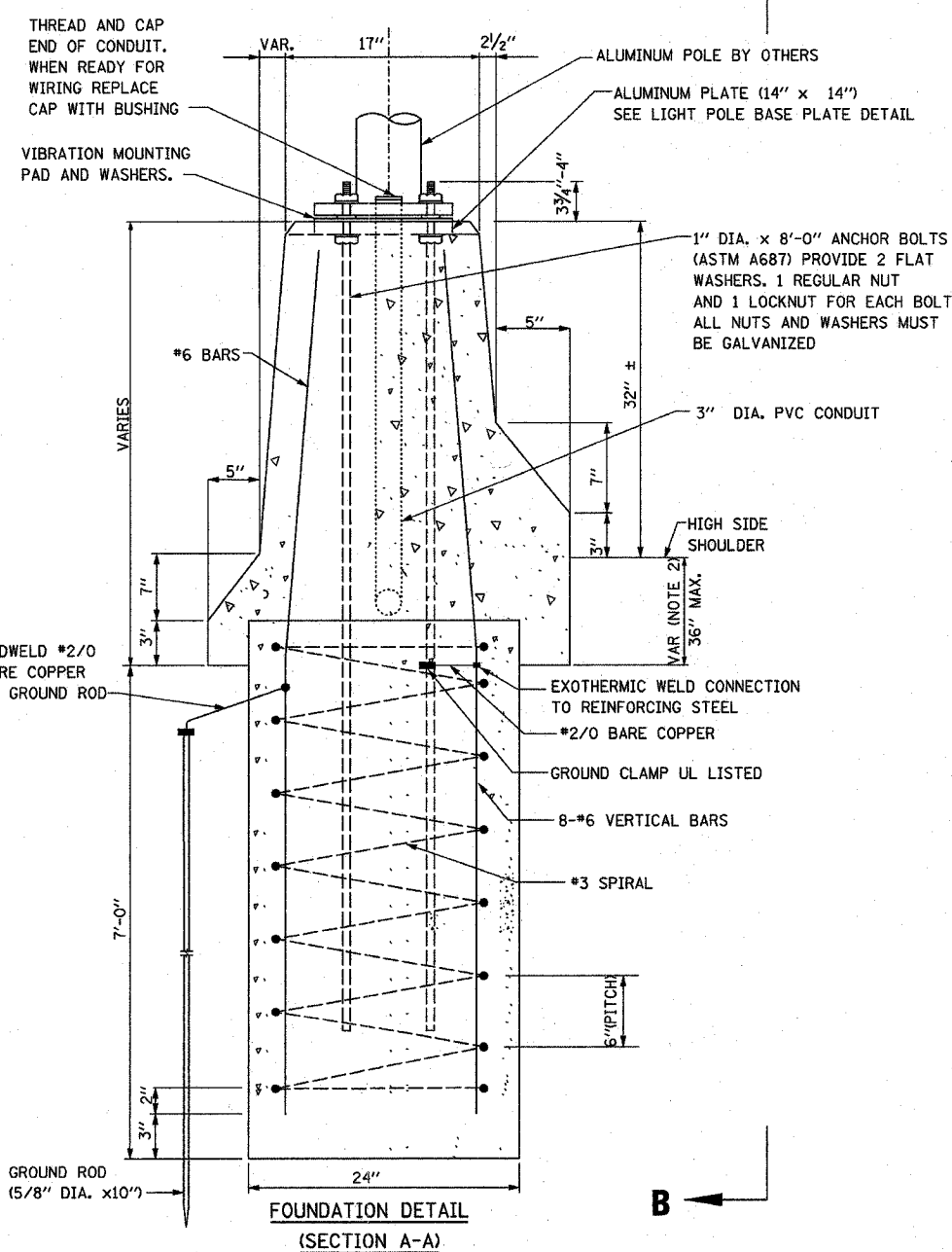
DATE	BY
DATE	BY
DATE	BY
DATE	BY



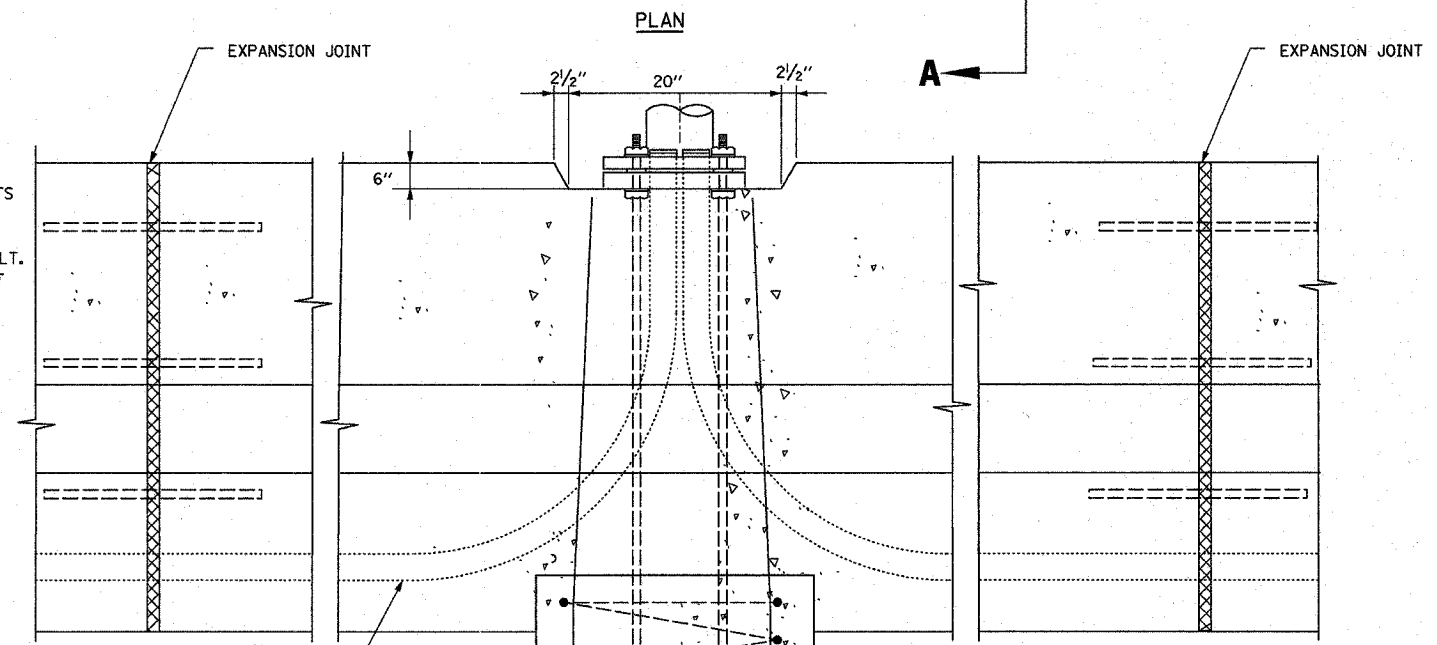
**LIGHT POLE BASE PLATE DETAIL**  
15 INCH BOLT CIRCLE



**ELEVATION AT LIGHTING FOUNDATION**  
(SECTION B-B)



**FOUNDATION DETAIL**  
(SECTION A-A)



**PLAN**

**NOTES**

1. ALL DIMENSIONS ARE IN INCHES UNLESS OTHERWISE SHOWN.
2. THE ANCHOR RODS AND RACEWAYS SHALL BE PROPERLY SECURED IN PLACE BEFORE CONCRETE IS PLACED.
3. THE HOLE FOR THE FOUNDATION SHALL BE MADE BY DRILLING WITH AN AUGER, OF THE SAME DIAMETER AS THE FOUNDATION. IF SOIL CONDITIONS REQUIRE THE USE OF A LINER TO FORM THE HOLE, THE LINER SHALL BE WITHDRAWN AS THE CONCRETE IS DEPOSITED.
4. FOR ADDITIONAL APPLICABLE DETAILS REFER TO IDOT STANDARD DRAWING E-301
5. THE CONTRACTOR SHALL USE A #3 SPIRAL AT 6" PITCH.

REVISIONS	
NAME	DATE

ILLINOIS DEPARTMENT OF TRANSPORTATION

**LIGHT POLE MOUNTED ON F SHAPE BARRIER WALL 15" BOLT CIRCLE**

SCALE: NONE  
DATE: OCTOBER 25, 2004

DRAWN BY: SM  
DESIGNED BY: SM  
CHECKED BY: SM

