

F.A.I. RTE.	SECTION	COUNTY	TOTAL SHEETS	SHEET NO.
55	2002-022 K	WILL	172	91
STA. 10+00		TO STA. 22+96.05		
FED. ROAD DIST. NO.		ILLINOIS FED. AID PROJECT		
CONTRACT # 62389				

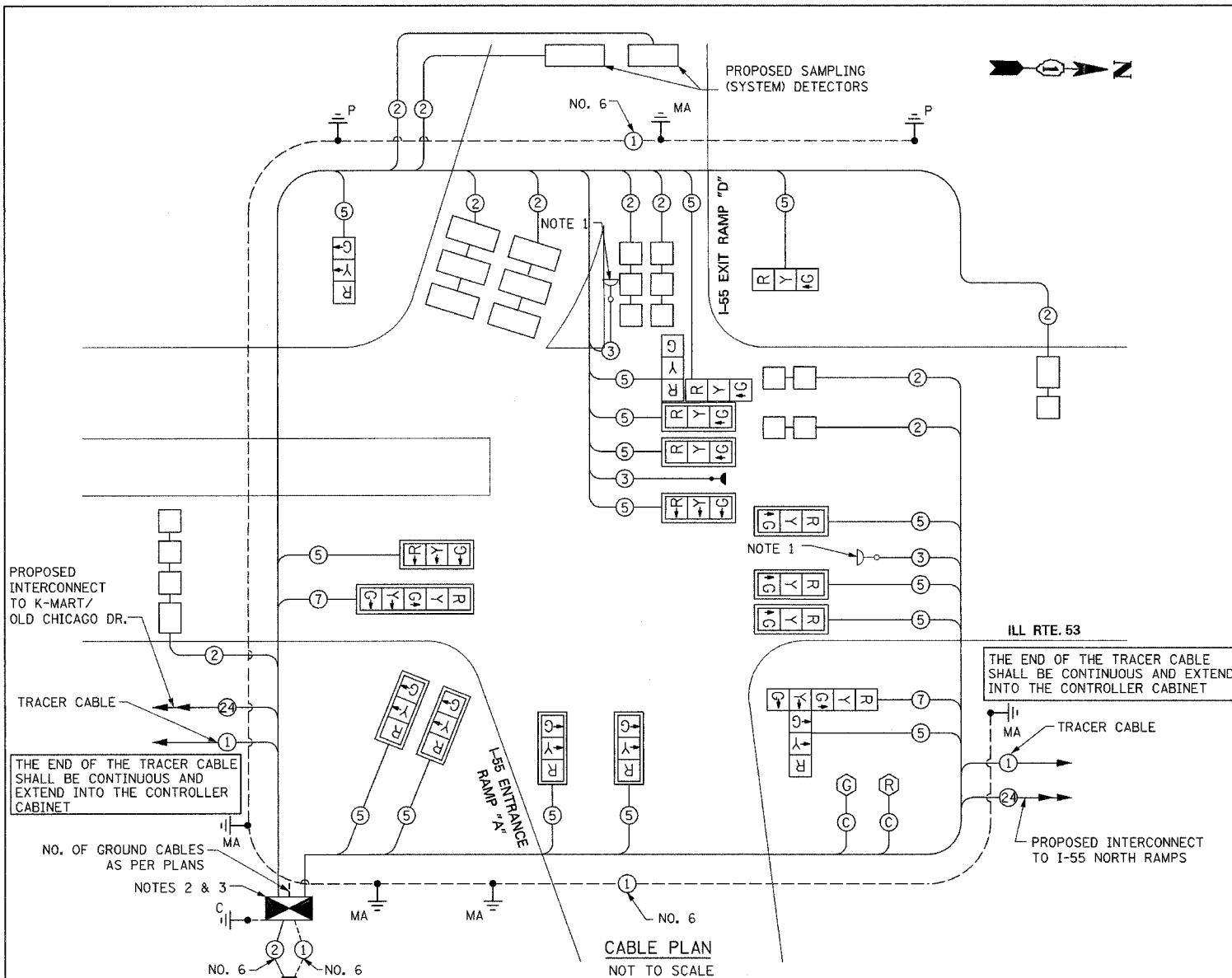
CABLE PLAN LEGEND

EXISTING	PROPOSED	DESCRIPTION
G	G	8" (200mm) TRAFFIC SIGNAL SECTION
R	R	12" (300mm) TRAFFIC SIGNAL SECTION
W	W	12" (300mm) PEDESTRIAN SIGNAL SECTION
		12" (300mm) PEDESTRIAN SIGNAL SECTION
		RAILROAD CONTROL CABINET
		CONTROLLER CABINET
		SERVICE INSTALLATION
		VEHICLE DETECTOR, INDUCTION LOOP
		TELEPHONE INSTALLATION
		MAGNETIC DETECTOR
		EMERGENCY VEHICLE LIGHT DETECTOR
		CONFIRMATION BEACON
		PUSHBUTTON DETECTOR
		DENOTES NUMBER OF CONDUCTORS. ALL CABLE NO. 14 EXCEPT AS INDICATED. ALL LOOP DETECTOR CABLE TO BE SHIELDED.
2	2	GROUND CABLE IN CONDUIT NO. 6 SOLID COPPER (GREEN)
1	1	FIBER OPTIC CABLE IN CONDUIT NO. 62.5/125 2-MM12F SM12F
		SIGNAL FACE WITH BACKPLATE "P" INDICATES PROGRAMMED HEAD.
R	R	RAILROAD CONTROL CABINET
E	E	ILLUMINATED SIGN "NO LEFT TURN"
E	E	ILLUMINATED SIGN "NO RIGHT TURN"
H/C	C	GROUND ROD AT HANDHOLE (H), DOUBLE HANDHOLE (H), OR CONTROLLER (C)
P	P	GROUND ROD AT POST (P) OR MAST ARM POLE (MA)
S	S	GROUND ROD AT ELECTRIC SERVICE INSTALLATION
R	R	RADIO ANTENNA
G	G	GPS ANTENNA
C	C	COAXIAL CABLE

SCHEDULE OF QUANTITIES

ITEM	UNIT	QNTY.
SIGN PANEL-TYPE 1	SQ. FT.	25
CONDUIT IN TRENCH, 2" DIA., GALVANIZED STEEL	FOOT	769
CONDUIT IN TRENCH, 2 1/2" DIA., GALVANIZED STEEL	FOOT	418
CONDUIT IN TRENCH, 4" DIA., GALVANIZED STEEL	FOOT	64
CONDUIT PUSHED, 2" DIA., GALVANIZED STEEL	FOOT	241
CONDUIT PUSHED, 4" DIA., GALVANIZED STEEL	FOOT	392
HANDHOLE	EACH	8
HEAVY DUTY HANDHOLE	EACH	1
DOUBLE HANDHOLE	EACH	1
TRENCH AND BACKFILL FOR ELECTRICAL WORK	FOOT	1240
FULL-ACTUATED CONTROLLER AND TYPE V CABINET, SPECIAL	EACH	1
TRANSCEIVER - FIBER OPTIC	EACH	1
** ELECTRIC CABLE IN CONDUIT, SIGNAL NO. 14 3C	FOOT	765
ELECTRIC CABLE IN CONDUIT, SIGNAL NO. 14 5C	FOOT	3540
ELECTRIC CABLE IN CONDUIT, SIGNAL NO. 14 7C	FOOT	285
ELECTRIC CABLE IN CONDUIT, LEAD-IN, NO. 14 1 PAIR	FOOT	2825
ELECTRIC CABLE IN CONDUIT, SERVICE, NO. 6 2 C	FOOT	375
ELECTRIC CABLE IN CONDUIT, GROUNDING, NO. 6 1C	FOOT	2175
TRAFFIC SIGNAL POST, GALVANIZED STEEL 14 FT.	EACH	2
STEEL MAST ARM ASSEMBLY AND POLE, 34 FT.	EACH	1
STEEL MAST ARM ASSEMBLY AND POLE, 36 FT.	EACH	1
STEEL MAST ARM ASSEMBLY AND POLE, 40 FT.	EACH	1
STEEL MAST ARM ASSEMBLY AND POLE, 48 FT.	EACH	1
STEEL MAST ARM ASSEMBLY AND POLE, 52 FT.	EACH	1
CONCRETE FOUNDATION, TYPE A	FOOT	8
CONCRETE FOUNDATION, TYPE D	FOOT	4
CONCRETE FOUNDATION, TYPE E 30-INCH DIAMETER	FOOT	30
CONCRETE FOUNDATION, TYPE E 36-INCH DIAMETER	FOOT	39
TRAFFIC SIGNAL BACKPLATE, LOUVERED, ALUMINUM	EACH	12
INDUCTIVE LOOP DETECTOR	EACH	10
DETECTOR LOOP, TYPE 1	FOOT	610
PREFORMED DETECTOR LOOP	FOOT	575
TEMPORARY TRAFFIC SIGNAL INSTALLATION	EACH	1
** RELOCATE EXISTING EMERGENCY VEHICLE PRIORITY SYSTEM, DETECTOR UNIT	EACH	2
** RELOCATE EXISTING EMERGENCY VEHICLE PRIORITY SYSTEM, PHASING UNIT	EACH	1
REMOVE EXISTING TRAFFIC SIGNAL EQUIPMENT	EACH	1
REMOVE EXISTING HANDHOLE	EACH	10
REMOVE EXISTING CONCRETE FOUNDATION	EACH	8
SIGNAL HEAD, L.E.D., 1-FACE, 3-SECTION, MAST ARM MOUNTED	EACH	11
SIGNAL HEAD, L.E.D., 1-FACE, 3-SECTION, BRACKET MOUNTED	EACH	2
SIGNAL HEAD, L.E.D., 1-FACE, 5-SECTION, MAST ARM MOUNTED	EACH	1
SIGNAL HEAD, L.E.D., 2-FACE, 3-SECTION, BRACKET MOUNTED	EACH	1
SIGNAL HEAD, L.E.D., 2-FACE, 1-3 SECTION, 1-5 SECTION, BRACKET MOUNTED	EACH	1
SERVICE INSTALLATION, POLE MOUNT	EACH	1
** COAXIAL CABLE IN CONDUIT	FOOT	400
** RADIO ANTENNA	EACH	1
** GPS ANTENNA	EACH	1

** 100% COST TO THE VILLAGE OF BOLINGBROOK

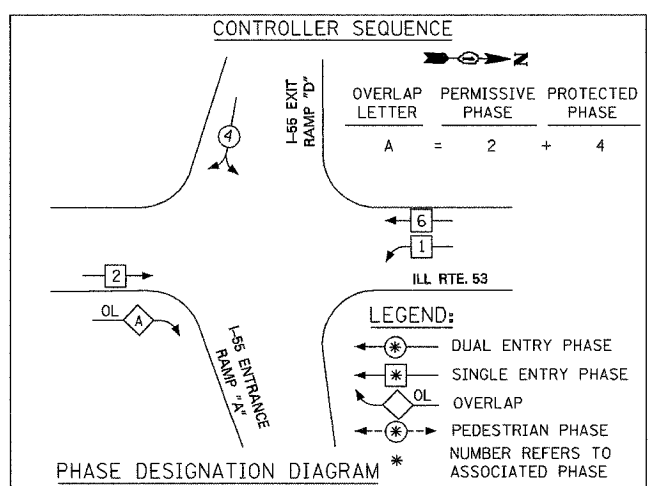


DATE	
BY	
REVISIONS	
PLAN	
NOTE BOOK	
NO.	

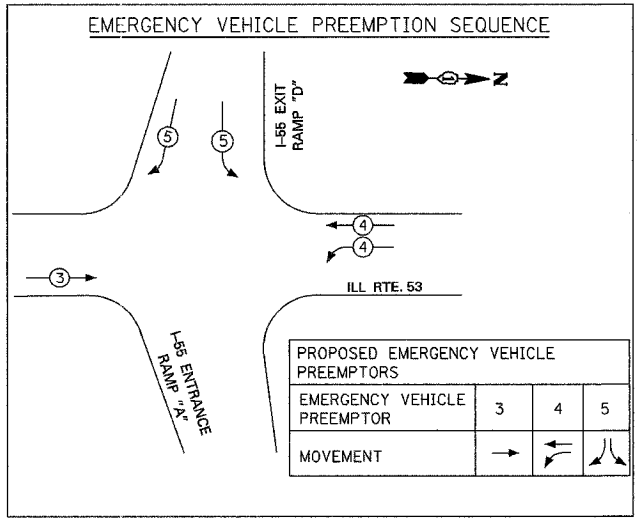
DATE	
BY	
REVISIONS	
PROFILE	
NOTE BOOK	
NO.	

- NOTE:**
- INSTALL EXISTING CONFIRMATION BEACON TO NEW SIGNAL INSTALLATION.
 - INSTALL EXISTING LIGHT DETECTOR AMPLIFIER TO NEW CABINET
 - INSTALL EXISTING BATTERY BACKUP EQUIPMENT TO NEW SIGNAL INSTALLATION.

I.D.O.T. TRAFFIC SIGNAL INSTALLATION ELECTRICAL SERVICE REQUIREMENTS					TOTAL WATTAGE
TYPE	NO. LAMPS	WATTAGE (INCAND)	LED	% OPERATION	
SIGNAL (RED)	18	135	17	0.50	153
(YELLOW)	18	135	25	0.25	112.5
(GREEN)	18	135	15	0.25	67.5
ARROW	4	135	12	0.10	4.8
PED. SIGNAL		90	25	1.00	
CONTROLLER	1	100	100	1.00	100
ILLUM. SIGN		84	35	0.05	
FLASHER		135	25	0.50	
TOTAL =					437.8



FOUNDATION (DEPTH)	(FT.) (m)	CABLE SLACK (FT.) (m)	CABLE SLACK (FT.) (m)
TYPE A - POST	4 (1.2)	HANDHOLE	6.5 (2.0)
D - CONTROLLER	4 (1.2)	DOUBLE HANDHOLE	13 (4.0)
E - M. ARM POLE		SIGNAL POST	2 (1.0)
24" (600mm)	10 (3.0)	CONTROLLER CAB.	1 (0.5)
30" (750mm)	15 (4.6)	FIBER OPTIC	13 (4.0)
		ELECTRIC SERVICE	1 (0.5)
		GROUND CABLE	1 (0.5)
		ALL FOUNDATIONS	3.5 (1.0)
		MAST ARM (L) POLE	20'-H-2'=(6m+L-0.6m)=
		BRACKET MOUNTED	13 (4.0)
		PED. PUSHBUTTON	4 (1.2)
		ELECTRIC SERVICE	13.5 (4.1)
		SERVICE TO GROUND	13.5 (4.1)
		POST MOUNTED	6 (1.8)



ENERGY COST TO: Illinois Department of Transportation
 Division of Highways / District 1
 201 W Center Court/Schaumburg, Illinois 60196-1096
 ENERGY SUPPLY: CONTACT: Mr. Dale Bollinger
 PHONE: 815-724-5717
 COMPANY: ComEd (1910 South Briggs St., Joliet, IL 60433)

THE TRAFFIC SIGNAL CONTROL EQUIPMENT FOR THIS PROJECT SHALL BE "ECONOLITE" TO MATCH THE EXISTING ADJACENT SYSTEM.

REVISIONS	
NAME	DATE

ILLINOIS DEPARTMENT OF TRANSPORTATION
 CABLE PLAN, EMERGENCY VEHICLE PREEMPTION SEQUENCE, PHASE DESIGNATION DIAGRAM AND SCHEDULE OF QUANTITIES
 ILL. RTE. 53 AT I-55 SOUTH RAMPS
 SCALE: NONE
 DATE: DECEMBER, 2004
 DRAWN BY: RV
 DESIGNED BY: AZ
 CHECKED BY: AZ

