

F.A.I. RTE.	SECTION	COUNTY	TOTAL SHEETS	SHEET NO.
55	2002-022 K	WILL	172	94
STA. 10+00		TO STA. 22+96.05		
FED. ROAD DIST. NO.		ILLINOIS FED. AID PROJECT		
CONTRACT # 62389				

**NOTES:**

1. INSTALL EXISTING CONFIRMATION BEACON, RADIO ANTENNA AND GPS ANTENNA TO NEW SIGNAL INSTALLATION.
2. INSTALL EXISTING LIGHT DETECTOR AMPLIFIER TO NEW CABINET.
3. EXISTING MASTER CONTROLLER IS LOCATED AT ILL. RTE. 53 AND BRIARCLIFF RD.
4. INSTALL EXISTING BATTERY BACKUP EQUIPMENT TO NEW SIGNAL INSTALLATION.

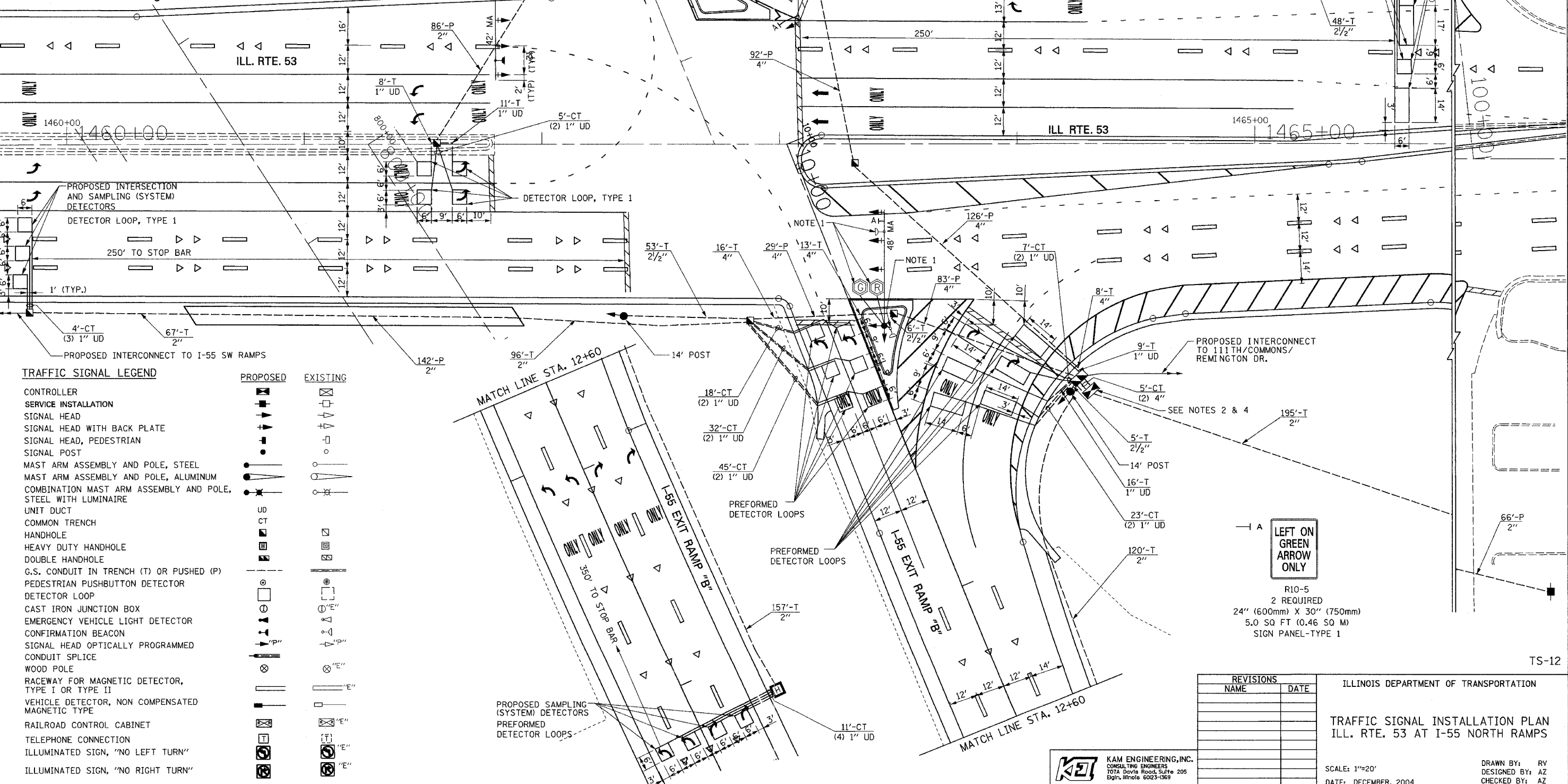
**RESTORATION OF WORK AREA.** RESTORATION OF THE TRAFFIC SIGNAL WORK AREA SHALL BE INCIDENTAL TO THE RELATED PAY ITEM SUCH AS FOUNDATION, CONDUIT, HANDHOLE, TRENCH AND BACKFILL, ETC., AND NO EXTRA COMPENSATION SHALL BE ALLOWED. ALL ROADWAY SURFACES SUCH AS SHOULDERS, MEDIAN, SIDEWALKS, PAVEMENT ETC. SHALL BE REPLACED IN KIND. ALL DAMAGE TO MOWED LAWNS SHALL BE REPLACED WITH AN APPROVED SOD, AND ALL DAMAGE TO UNMOWED FIELDS SHALL BE SEEDED IN ACCORDANCE WITH STANDARD SPECIFICATIONS 252 AND 250 RESPECTIVELY.

**TRAFFIC SIGNAL LEGEND (CONT'D)**

	PROPOSED	EXISTING
RADIO ANTENNA		
GPS ANTENNA		

PLAN	DATE
BY	
REVISIONS	
NOTED	
FILE NAME	

PROFILE	DATE
BY	
REVISIONS	
NOTED	
FILE NAME	



**TRAFFIC SIGNAL LEGEND**

	PROPOSED	EXISTING
CONTROLLER		
SERVICE INSTALLATION		
SIGNAL HEAD		
SIGNAL HEAD WITH BACK PLATE		
SIGNAL HEAD, PEDESTRIAN		
SIGNAL POST		
MAST ARM ASSEMBLY AND POLE, STEEL		
MAST ARM ASSEMBLY AND POLE, ALUMINUM		
COMBINATION MAST ARM ASSEMBLY AND POLE, STEEL WITH LUMINAIRE		
UNIT DUCT		
COMMON TRENCH		
HANDHOLE		
HEAVY DUTY HANDHOLE		
DOUBLE HANDHOLE		
G.S. CONDUIT IN TRENCH (T) OR PUSHED (P)		
PEDESTRIAN PUSHBUTTON DETECTOR		
DETECTOR LOOP		
CAST IRON JUNCTION BOX		
EMERGENCY VEHICLE LIGHT DETECTOR		
CONFIRMATION BEACON		
SIGNAL HEAD OPTICALLY PROGRAMMED		
CONDUIT SPLICE		
WOOD POLE		
RACEWAY FOR MAGNETIC DETECTOR, TYPE I OR TYPE II		
VEHICLE DETECTOR, NON COMPENSATED		
MAGNETIC TYPE		
RAILROAD CONTROL CABINET		
TELEPHONE CONNECTION		
ILLUMINATED SIGN, "NO LEFT TURN"		
ILLUMINATED SIGN, "NO RIGHT TURN"		

**LEFT ON GREEN ARROW ONLY**

R10-5  
2 REQUIRED  
24" (600mm) X 30" (750mm)  
5.0 SQ FT (0.46 SQ M)  
SIGN PANEL-TYPE 1

**REVISIONS**

NAME	DATE

ILLINOIS DEPARTMENT OF TRANSPORTATION

**TRAFFIC SIGNAL INSTALLATION PLAN**  
ILL. RTE. 53 AT I-55 NORTH RAMPS

SCALE: 1"=20'  
DATE: DECEMBER, 2004

DRAWN BY: RV  
DESIGNED BY: AZ  
CHECKED BY: AZ

**K&E** KAM ENGINEERING, INC.  
CONSULTING ENGINEERS  
707A Davis Road, Suite 205  
Evan, Illinois 60231-1569

TS-12