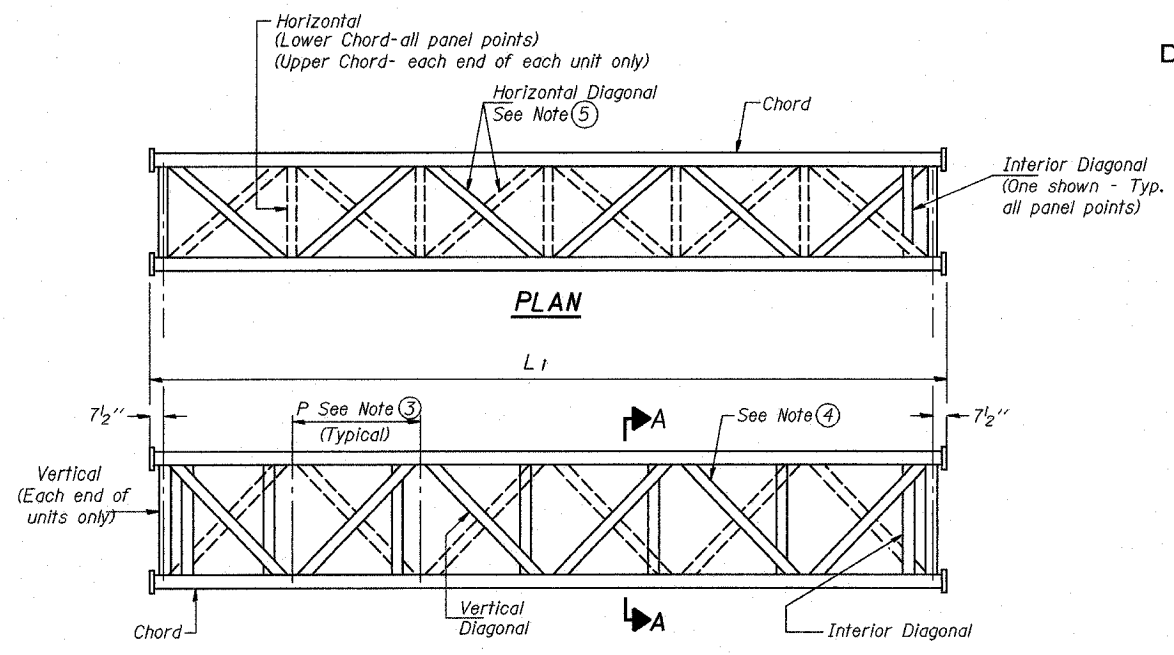
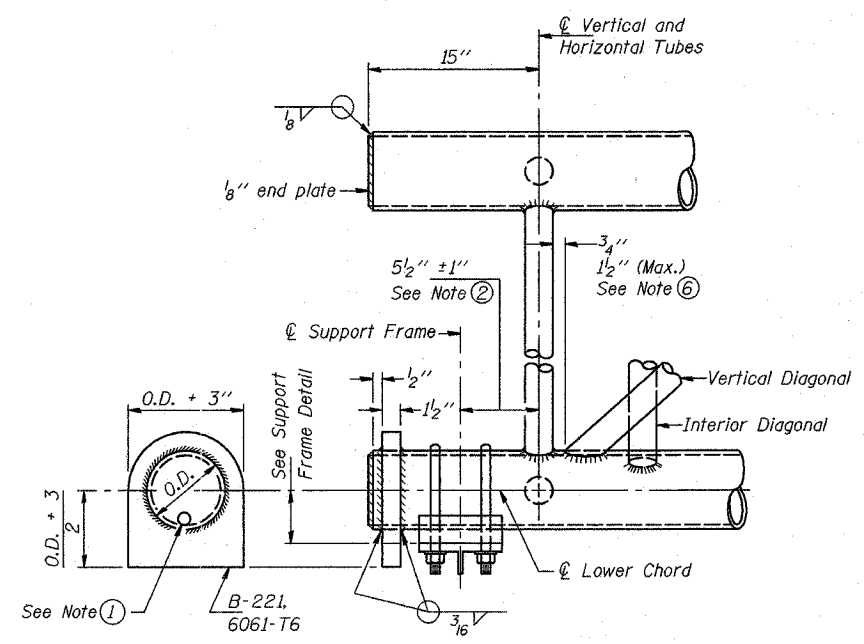


STATE OF ILLINOIS  
DEPARTMENT OF TRANSPORTATION

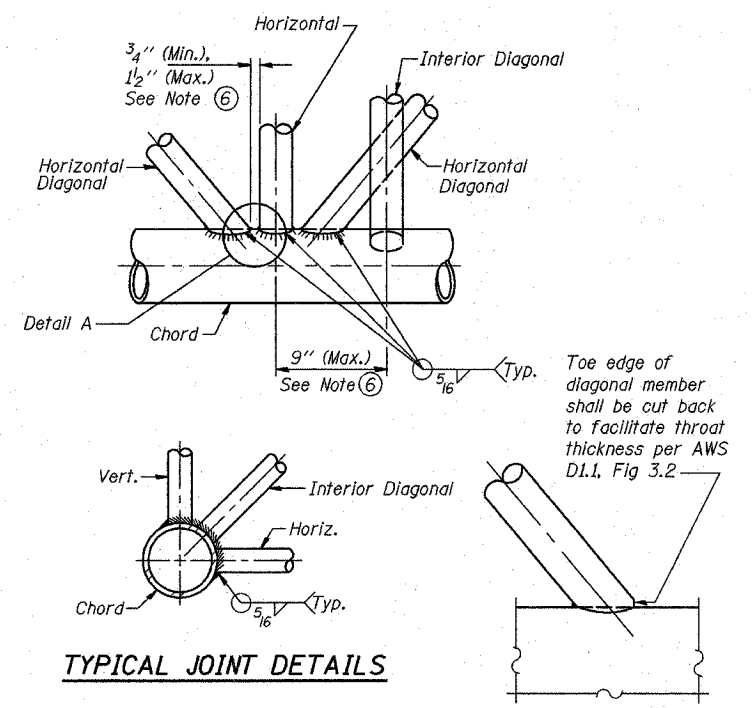
ROUTE NO.	SECTION	COUNTY	TOTAL SHEETS	SHEET NO.
55	2002-022 K	WILL	172	109
FED. ROAD DIST. NO. 1		ILL. HIGHW.	FED. AID PROJECT-	



**ELEVATION  
TYPICAL INTERIOR UNIT**  
Even number of panels/interior unit required.



**SUPPORT END DETAIL FOR EXTERIOR UNIT**

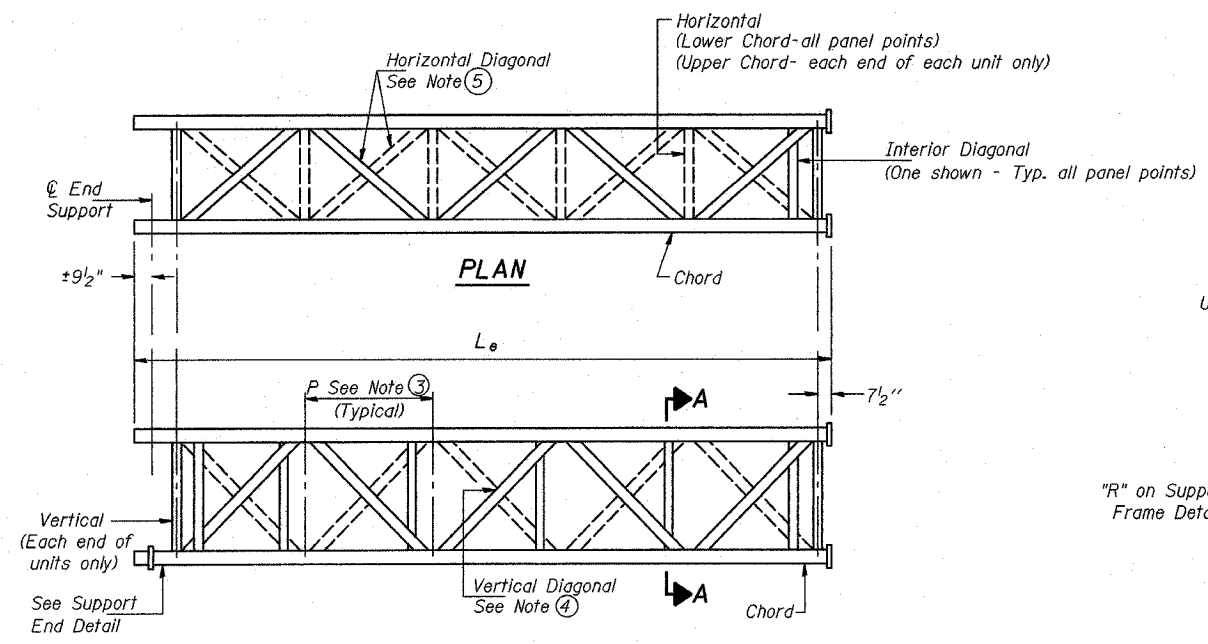


**TYPICAL JOINT DETAILS**

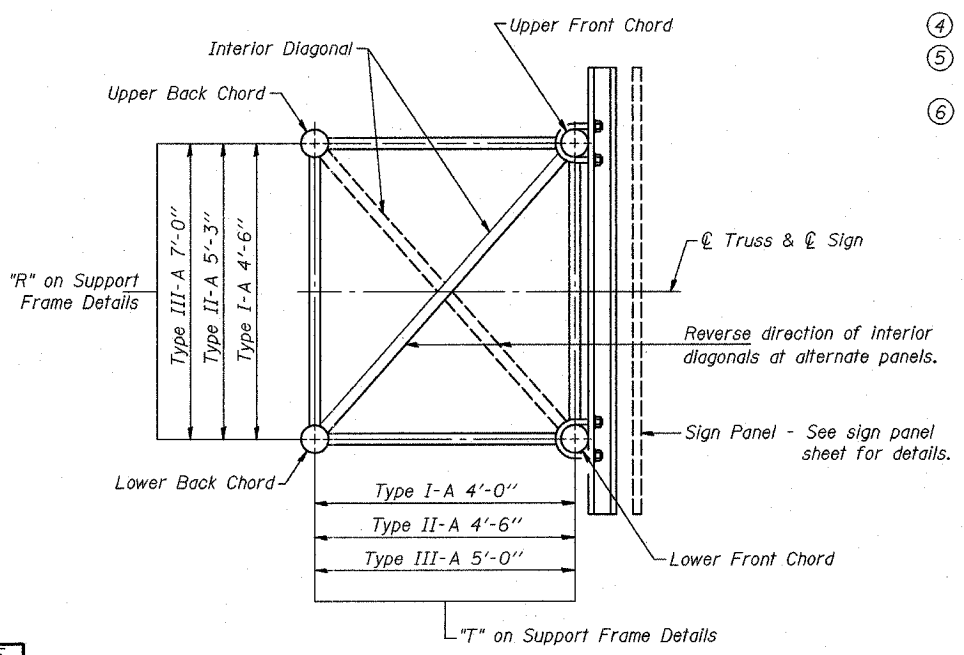
**DETAIL A**

**NOTES**

- Contractor may alternatively use standard aluminum drive-fit cap to close end. 1/2"  $\phi$  drain hole in end plate/drive-fit cap. (Typ. at ends of all chords)
- 5 1/2" end dimension may vary by  $\pm 1$ " to provide uniform panel spacing (P).
- Panel spacing (P) shall be uniform for entire truss and between 4'-0" and 5'-0" for Type I-A or 4'-0" and 5'-6" for Types II-A and III-A.
- Vertical Diagonals in front and back face shall alternate.
- Hidden lines show wind bracing alternates direction between planes of top and bottom chords.
- All diagonals shall be detailed for minimum offset from the panel point based on the following: Offset shall be such as to provide a 3/4" minimum to 1 1/2" maximum clearance between any diagonal and any horizontal or vertical member, and to provide clearance for U-bolt connections of signs or walkway brackets.



**ELEVATION  
TYPICAL EXTERIOR UNIT**  
Even or odd number of panels/exterior units allowed.



**SECTION A-A**

DESIGNED	SL
CHECKED	AS
DRAWN	MD
CHECKED	SL

EXAMINED	20
PASSED	

ENGINEER OF STRUCTURAL SERVICES  
ENGINEER OF BRIDGES AND STRUCTURES

NUMBER	REVISION	DATE

OS-A-2 11/1/2002

**OVERHEAD SIGN STRUCTURES  
ALUMINUM TRUSS DETAILS  
FOR TRUSS TYPES I-A, II-A and III-A**  
ILLINOIS DEPARTMENT OF TRANSPORTATION  
I-55 (STEVENSON EXPY.) AT ILL. RTE. 53  
OVERHEAD SIGN STRUCTURES

SGN-8