

STATE OF ILLINOIS
DEPARTMENT OF TRANSPORTATION

ROUTE NO.	SECTION	COUNTY	TOTAL SHEETS	SHEET NO.
55	2002-022 K	WILL	172	118
FED. ROAD DIST. NO. 1		ILLINOIS	FED. AID PROJECT	

NOTES:

The foundation dimensions shown are based on the presence of mostly cohesive soils with an average Unconfined Compressive Strength (Q_u) of at least 1.25 tsf, which must be determined by previous soil investigations at the jobsite. When other conditions are indicated, the boring data will be included in the plans and the foundation dimensions shown will be the result of site specific designs.

If the conditions encountered are different than those indicated, the Contractor shall notify the Engineer to determine if the foundation dimensions need to be modified. If dimensions "B" or "F" are revised by more than 12" by the Contractor, "as-built" plans shall be prepared and submitted to the District Bureau of Operations for future reference.

No sonotubes or decomposable forms shall be used below the lower conduit entrance.

Permanent metal forms or other shielding may not be left in place below that elevation without the Engineer's written permission.

Concrete shall be placed monolithically, without construction joints.

Backfill shall be placed per Article 502 of Standard Specification and prior to erection of support column.

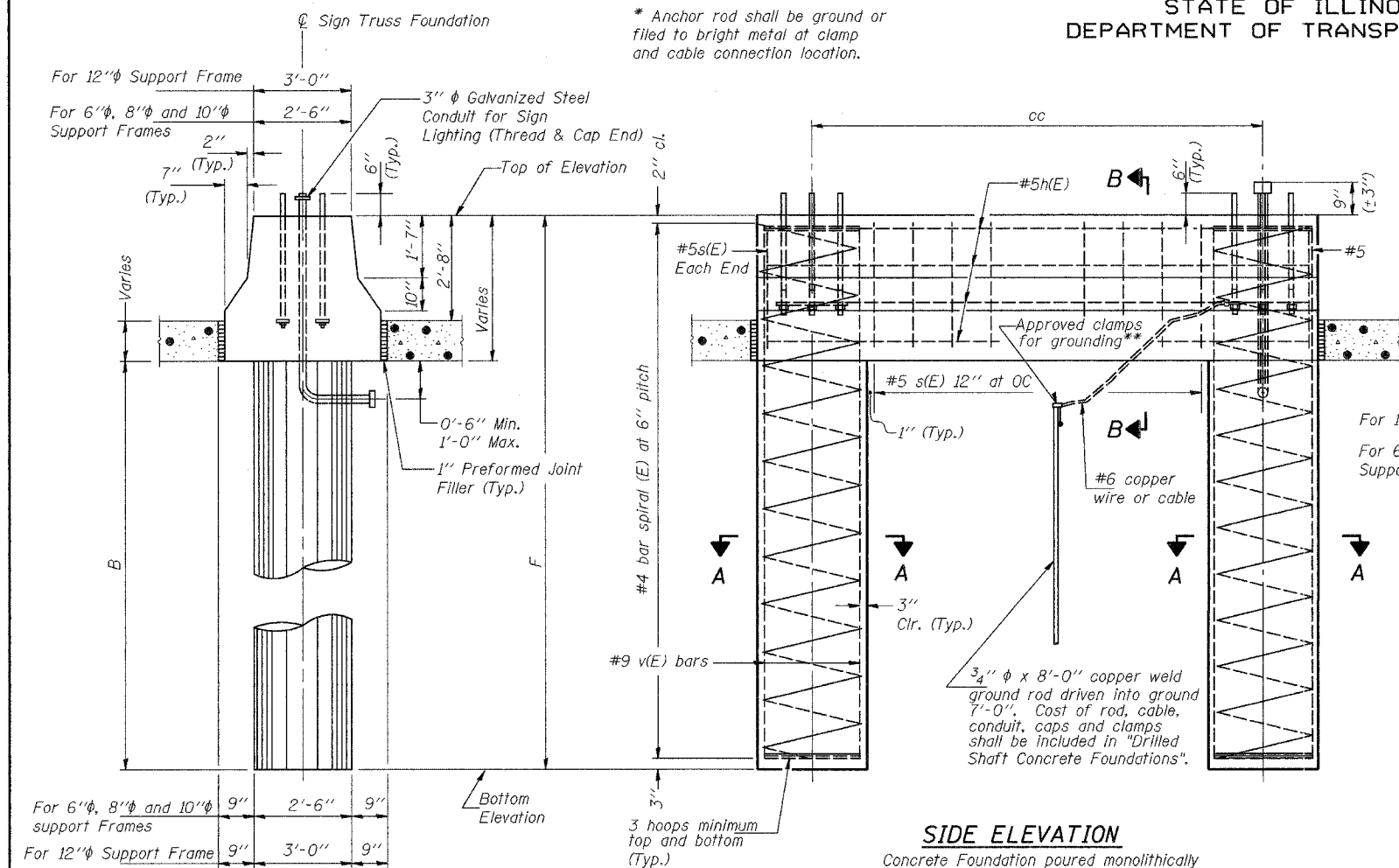
A normal surface finish followed by a Bridge Seat Sealer application will be required on concrete surfaces above the lowest elevation 6" below finished ground line. Cost included in "Drilled Shaft Concrete Foundation".

BAR LIST - EACH FOUNDATION

Bar	Number	Size	Length	Shape
h(E)	10	#5	M less 4"	
s(E)	Varies	#5	Varies	□
v(E)	16	#9	D less 0'-5"	
v(E)	24	#9	D less 0'-5"	

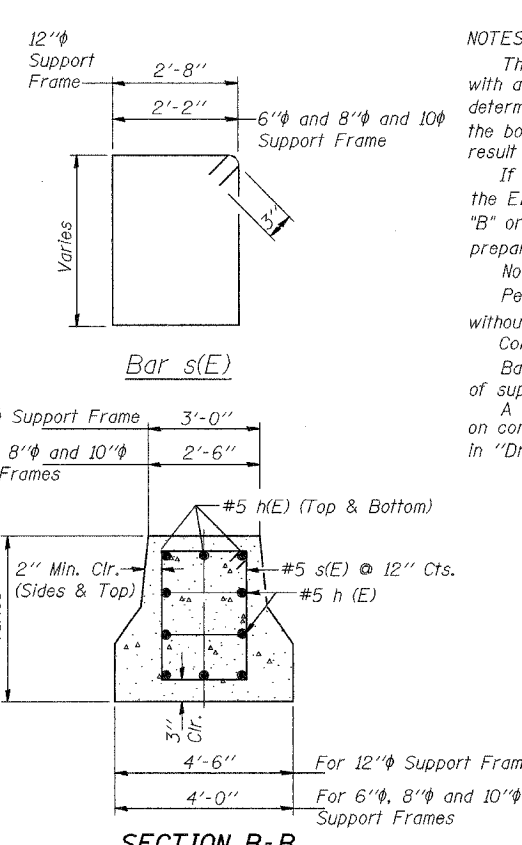
6"φ, 8"φ and 10"φ Support Frame
12"φ Support Frame

#4(E) bar spiral - see Side Elevation

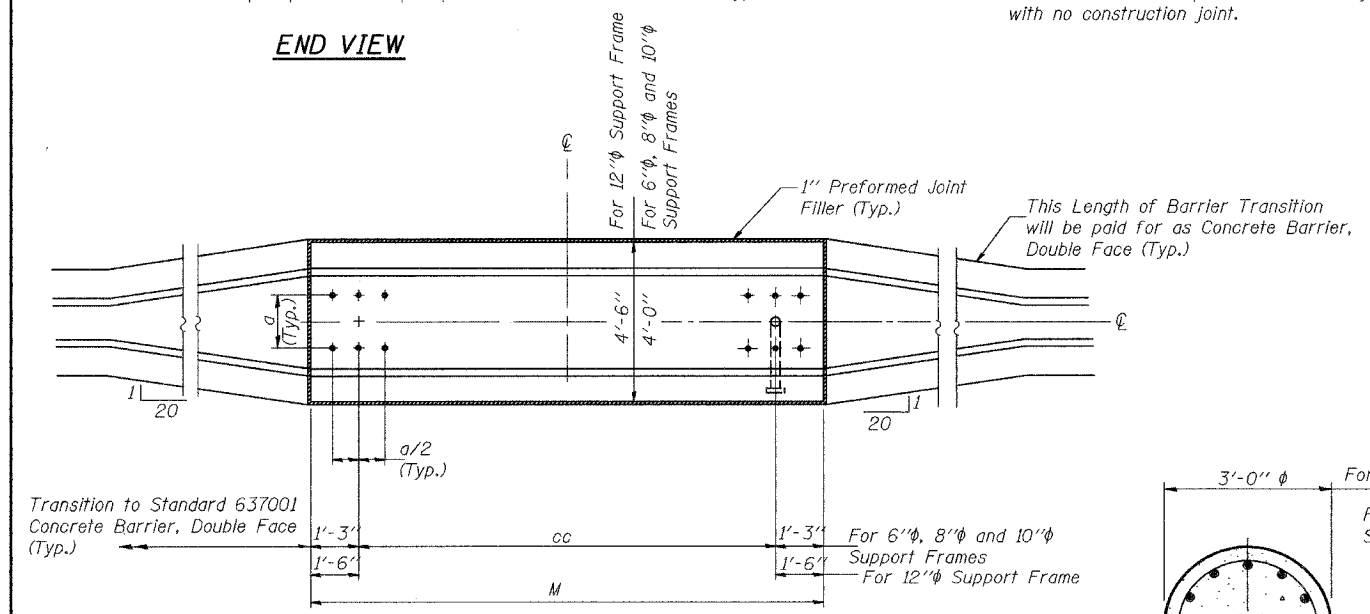


SIDE ELEVATION

Concrete Foundation poured monolithically with no construction joint.



SECTION B-B



END VIEW

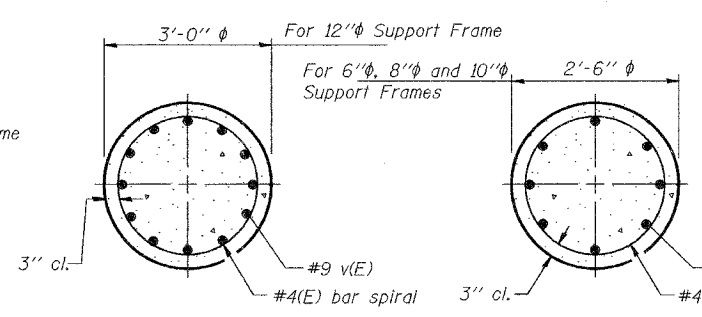
PLAN

Structure Number	Station	Left Foundation				Right Foundation				Class S1 Concrete (Cu. Yds.)
		Elevation Top	Elevation Bottom	B	F	Elevation Top	Elevation Bottom	B	F	
IS099I055L268.0	511+61.2	725.600	706.400	16.5	19.200					10.4

DESIGNED	SL	20
CHECKED	AS	
DRAWN	MD	
CHECKED	SL	

EXAMINED	
PASSED	ENGINEER OF STRUCTURAL SERVICES
	ENGINEER OF BRIDGES AND STRUCTURES

OS4-MED 11/1/2002



SECTION A-A

Pipe Support Frames	cc	M	a	a/2
6"φ	7'-0"	9'-6"	0'-11"	5 1/2"
8"φ	7'-6"	10'-0"	1'-1 1/2"	6 3/4"
10"φ	8'-3"	10'-9"	1'-3"	7 1/2"
12"φ	9'-0"	12'-0"	1'-6"	9"

SGN-17

**OVERHEAD SIGN STRUCTURES
MEDIAN SUPPORT FOUNDATION DETAILS**

ILLINOIS DEPARTMENT OF TRANSPORTATION
I-55 (STEVENS ON EXPY.) AT ILL. RTE. 53

OVERHEAD SIGN STRUCTURES