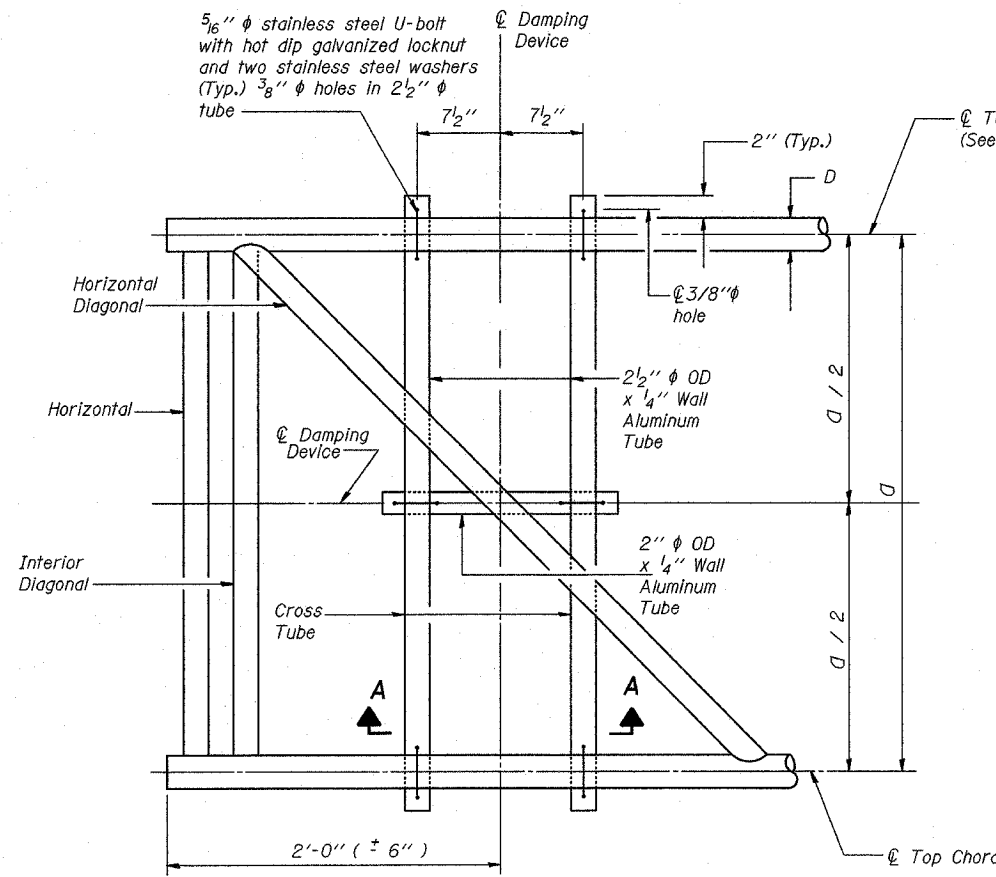
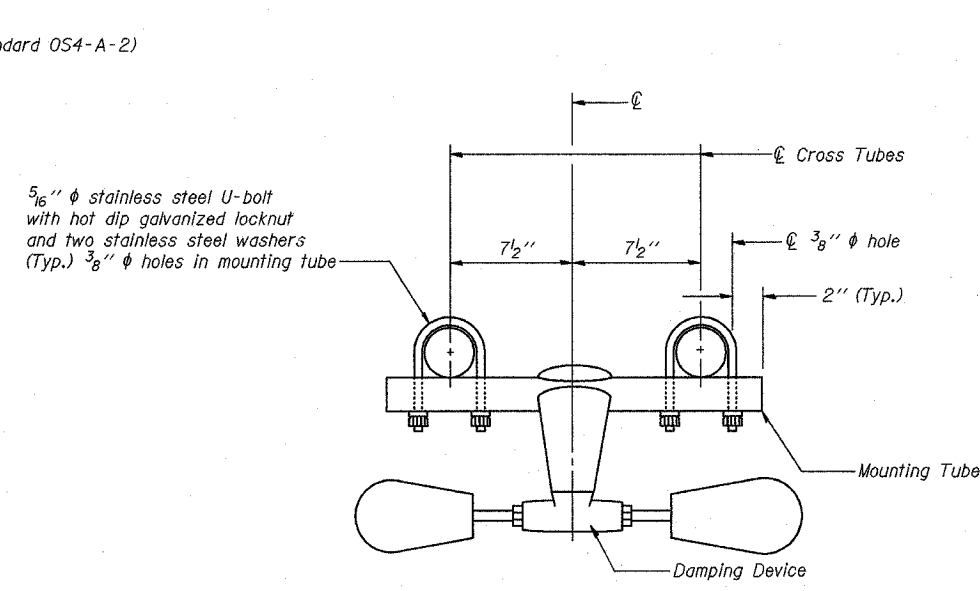


STATE OF ILLINOIS
DEPARTMENT OF TRANSPORTATION

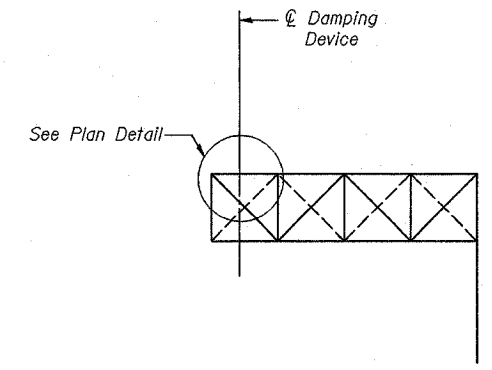
ROUTE NO.	SECTION	COUNTY	STATE DISTRICTS	SHEET NO.
55	2002-022 K	WILL	172	121
FED. ROAD DIST. NO. 1	ILLINOIS	FED. AID PROJECT		



PLAN DETAIL



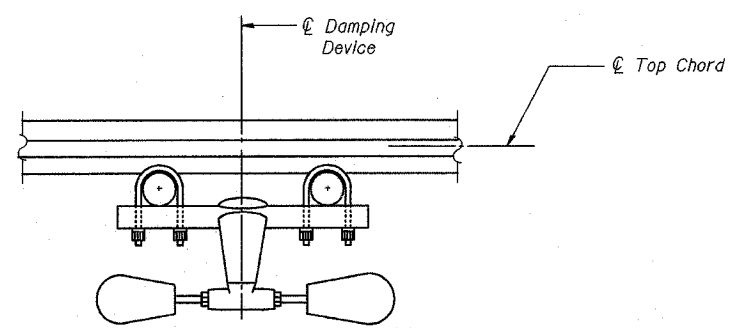
**TRUSS DAMPING
DEVICE CONNECTION DETAIL**



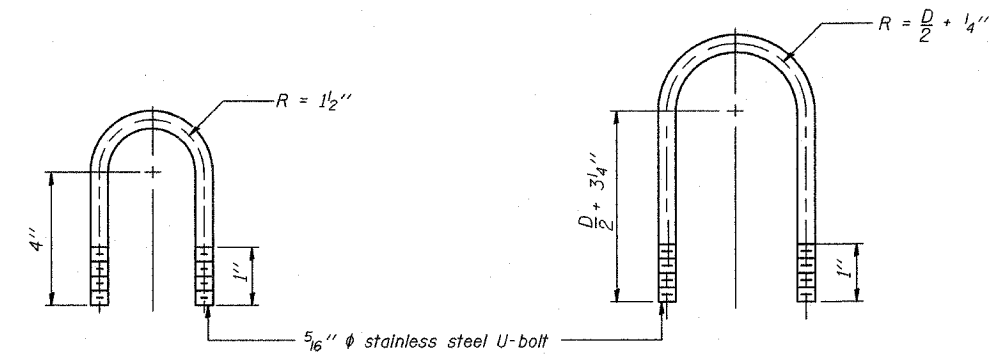
ELEVATION
Aluminum Cantilever
Sign Structure

GENERAL NOTES

Damper: One damper per truss. (31 lbs. Stockbridge-Type Aluminum)
Materials: Aluminum tubes shall be ASTM B221 alloy 6061 temper T6



SECTION A-A



**DAMPING DEVICE MOUNTING
TUBE U-BOLT DETAIL**
(Typical)

**TOP CHORD TO CROSS TUBE
U-BOLT DETAIL**
(Typical)

DESIGNED SL	20
CHECKED AS	EXAMINED
DRAWN MD	ENGINEER OF STRUCTURAL SERVICES
CHECKED SL	PASSED
	ENGINEER OF BRIDGES AND STRUCTURES

OSC-A-D 11/1/2002

SGN-20

**CANTILEVER SIGN STRUCTURE
DAMPING DEVICE**

ILLINOIS DEPARTMENT OF TRANSPORTATION
I-55 (STEVENS EXPY.) AT ILL. RTE. 53

OVERHEAD SIGN STRUCTURES CANTILEVER