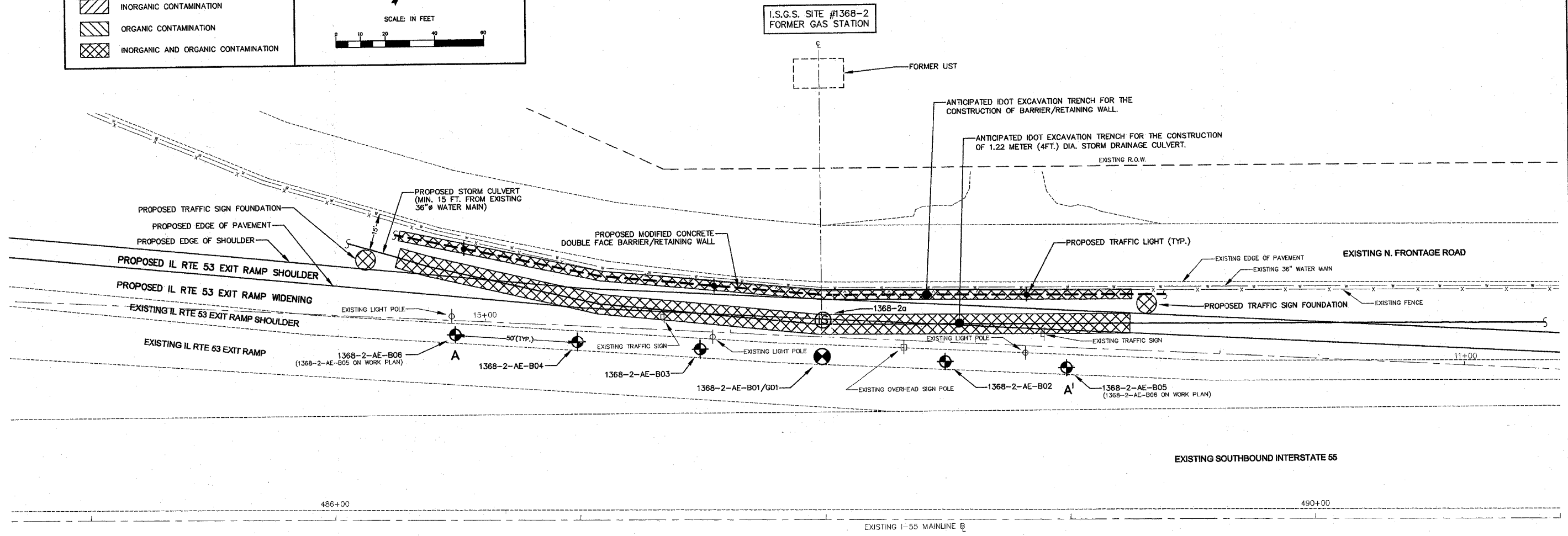


**BORING AND CROSS SECTION LOCATIONS**  
**ISGS SITE #1368-2**

LEGEND	PLAN VIEW SCALE
ISGS SAMPLING LOCATION	<p>SCALE IN FEET</p> <p>0 10 20 40 60</p>
BORING LOCATION	
TEMPORARY MONITORING WELL LOCATION	
INORGANIC CONTAMINATION	
ORGANIC CONTAMINATION	
INORGANIC AND ORGANIC CONTAMINATION	



**CONTAMINANTS OF CONCERN**  
**ISGS SITE #1368-2**

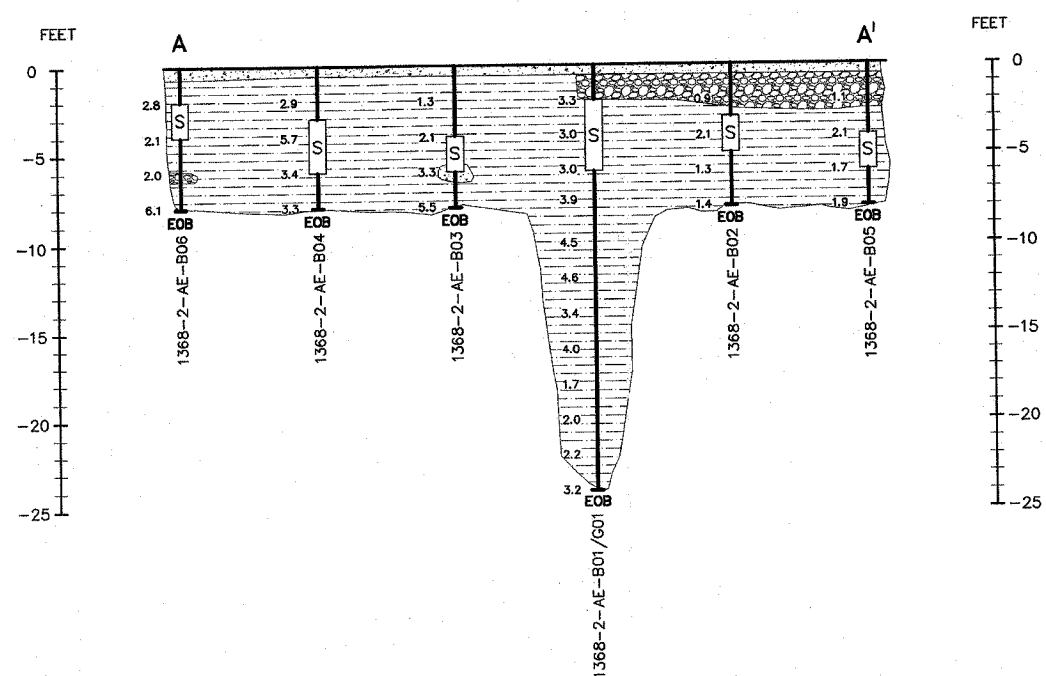
SITE	Century Tile & Carpet						
	1368-B01	1368-B02	1368-B03	1368-B08DUP	1368-B04	1368-B05	1368-B06
<b>SAMPLE NUMBER</b>							
<b>MATRIX</b>	soil	soil	soil	soil	soil	soil	soil
<b>ANALYTE GROUP (units/ANALYTE)</b>							
<b>Inorganics (soil/mg water/ug/L)</b>							
Thallium							
<b>Semi-volatile Organics (soil/ug water/ug/L)</b>							
2,4-Dichlorophenol							
2,4-Dinitrophenol							
2,4-Dinitrotoluene							
2,6-Dinitrotoluene							
Bis(2-chloroethyl)ether							
Dibenz(a,h)anthracene							
Nitrobenzene							
n-Nitrosod-n-propylamine							
Pentachlorophenol							

Notes:  
 1. This table shows any parameter detected above the applicable standard in one or more borings in the project and whose exceedence cannot be ruled out by some other method (see text).  
 2. This table shows any parameter whose detection limit exceeded the applicable standard in one or more borings in the project.  
 3. A shaded box indicates the Ingestion, Inhalation or Class I standard for residential properties was exceeded for soil samples, the Class I standard was exceeded for groundwater samples, or the Class I or Regulatory Limit was exceeded for TCLP/BPLP analysis.  
 4. A result in bold indicates test results exceeded the Ingestion or Inhalation Standard for Construction Workers.  
 5. Non-detect results with detection limits greater than the applicable standard are shown on the table as an exceedence with the detection limit and an "ND". Results given as just "ND" (no detection limit listed) were not detected at detection limits lower than the applicable standard, i.e., not detected at the Reporting Limit.  
 6. NT = No testing was completed for the analyte.  
 7. E = Estimated value outside the linear range of the calibration curve.

**CROSS-SECTIONAL PROFILE LEGEND**

- ASPHALT
- SILTY CLAY/SAND/TRACE GRAVEL
- STONE OR GRAVEL
- EOB END OF BORING
- SOIL SAMPLE COLLECTED
- PID READING @ 2' INTERVAL
- GROUND SURFACE

**VOC HEADSPACE AND CROSS-SECTIONAL PROFILE**  
**ISGS SITE #1368-2**



NO.	DATE	DESCRIPTION	REVISED PER	BY
1.	07/15/04		REVISED PER	IDOT

DESIGNED BY: DOT-BDE  
 DRAWN BY: BSS

APPROVED BY:

ANDREWS ENVIRONMENTAL ENGINEERING INC.  
 28W100 Butterfield Road, Suite 103, Mt. Prospect, IL 60055  
 Tel (630) 393-9474 Fax (630) 393-9485  
 Springfield, IL • Pontiac, IL • Indianapolis, IN

**INVESTIGATION DATA SUMMARY**

PLANS PREPARED FOR  
 ILLINOIS DEPARTMENT OF TRANSPORTATION  
 ISGS SITE #1368-2  
 FAI 55 / I-55 AT ILLINOIS ROUTE 53  
 BOLINGBROOK, WILL COUNTY, ILLINOIS

DATE: DECEMBER 2003  
 PROJECT ID: IDOT WO 055  
 FILE: WO 055 PSI (063).dwg  
 SHEET NUMBER: **FIGURE 4-1**