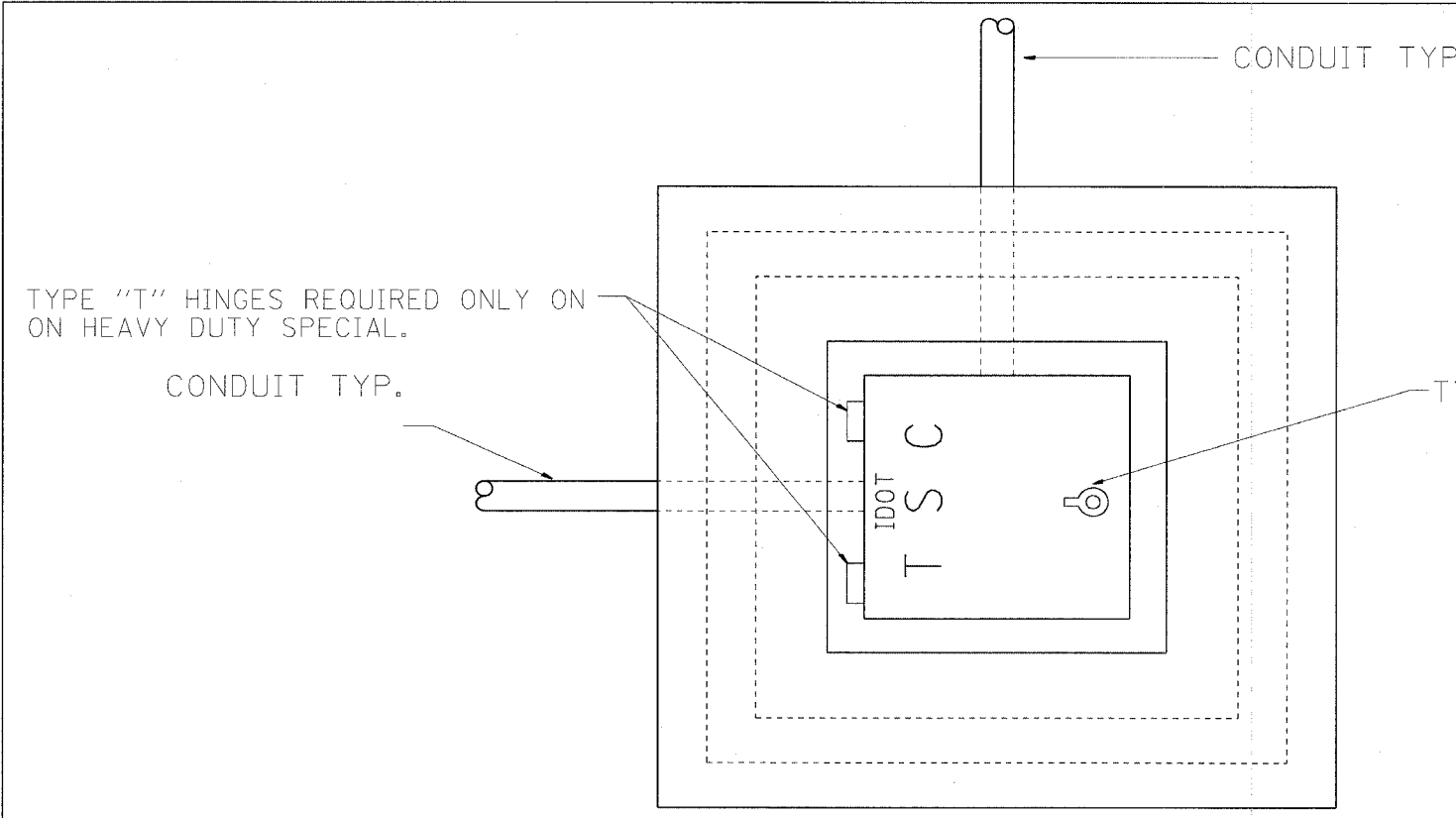


| | | | | |
|---------------------|------------|---------------------------|--------------|-----------|
| F.A. RTE. | SECTION | COUNTY | TOTAL SHEETS | SHEET NO. |
| 55 | 2002-022 K | WILL | 172 | 143 |
| STA. 10+00 | | TO STA. 22+96.05 | | |
| FED. ROAD DIST. NO. | | ILLINOIS FED. AID PROJECT | | |
| CONTRACT NO. 62389 | | | | |



TYPE "T" HINGES REQUIRED ONLY ON ON HEAVY DUTY SPECIAL.

CONDUIT TYP.

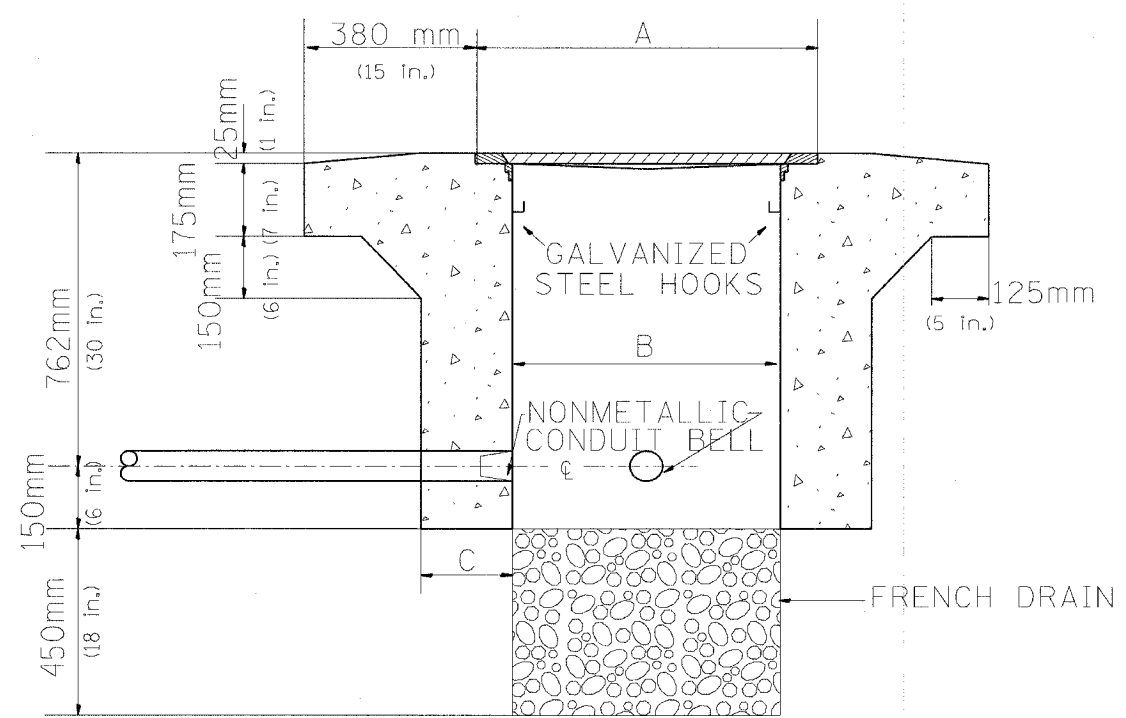
TYPE "G" HANDLE FOR BOTH HDHH AND HDHH SPECIAL

PLAN

HEAVY DUTY HANDHOLE MINIMUM DIMENSIONS (UNHINGED)

| | |
|---|--------------|
| A | 711 mm (28") |
| B | 559 mm (22") |
| C | 200 mm (8") |

(FRAME AND COVER 118 Kg. (260 LBS.) MIN.)



HEAVY DUTY HANDHOLE SPECIAL MINIMUM DIMENSIONS

| | |
|---|----------------|
| A | 800 mm (31.5") |
| B | 762 mm (30") |
| C | 250 mm (10") |

(FRAME AND COVER 184 Kg. (405 LBS.))

ELEVATION

PC CONCRETE - HEAVY DUTY SPECIAL

| REVISIONS | | ILLINOIS DEPARTMENT OF TRANSPORTATION TRAFFIC SYSTEMS CENTER |
|----------------------------------|------|---|
| NAME | DATE | |
| R.L. | 4-97 | PC CONCRETE - HEAVY DUTY |
| | | |
| | | |
| | | |
| | | |
| SCALE: VERT. NONE HORIZ. NONE | | DRAWN BY G.M. |
| DATE 9-11-96 | | CHECKED BY R.L. |

TRAFFIC SYSTEMS CENTER (TY-1TSC-400#15)

RD-TYPMET.DGN
RF-

VI-40015