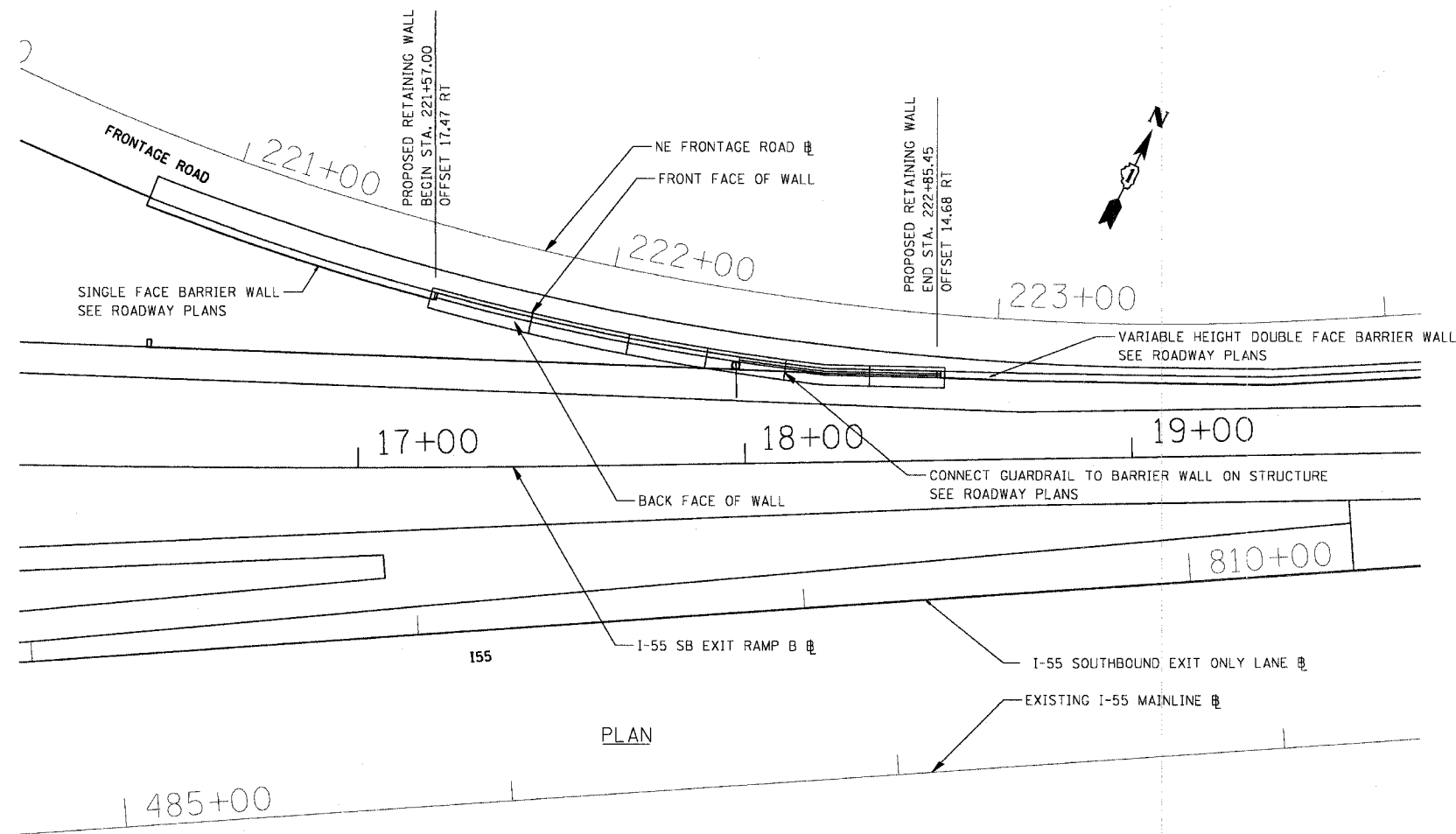


F.A.I. RTE.	SECTION	COUNTY	TOTAL SHEETS	SHEET NO.
55	2002-022 K	WILL	172	145
STA. 10+00		TO STA. 22+96.05		
FED. ROAD DIST. NO.		ILLINOIS FED. AID PROJECT		
CONTRACT NO. 62389				

BM #306: SET "4" ON THE SE BOLT OF SLY SUPPORT BAR TO LARGE OVERHEAD SIGN (CENTURY TILE).  
STA. 487+72.62, 168.21' LT, I-55 @ EL. 701.99



**GENERAL NOTES**

1. STATION AND OFFSETS ARE MEASURED FROM NE FRONTAGE ROAD TO THE FRONT FACE OF THE RETAINING WALL.
2. EXISTING UTILITIES IN CONFLICT WITH RETAINING WALL SHALL BE ABANDONED OR RELOCATED ACCORDING TO DIRECTIONS GIVEN IN THE ROADWAY PLANS.
3. THE CONTRACTOR SHALL SUBMIT A TEMPORARY SOIL RETENTION SYSTEM DESIGN INCLUDING PLAN DETAILS AND CALCULATIONS FOR REVIEW AND ACCEPTANCE BY THE ENGINEER.
4. ALL CONSTRUCTION JOINTS SHALL BE BONDED.
5. ALL EXPOSED CONCRETE EDGES SHALL HAVE 3/4" BY 45° CHAMFER EXCEPT WHERE SHOWN OTHERWISE. CHAMFER ON VERTICAL EDGES SHALL BE CONTINUED A MINIMUM OF 1 FOOT BELOW THE FINISHED GRADE LINE.
6. A PROTECTIVE COAT SHALL BE APPLIED ACCORDING TO SECTION 503 OF THE STANDARD SPECIFICATIONS TO ALL CONCRETE SURFACES NOT IN CONTACT WITH SOIL.
7. REINFORCEMENT BARS SHALL CONFORM TO THE REQUIREMENTS OF AASHTO M3L, M42 OR M53 GRADE 60.

**DESIGN SPECIFICATION:**

2002 AASHTO SPECIFICATIONS FOR HIGHWAY BRIDGES

**DESIGN STRESSES:**

**FIELD UNITS**

f'c = 3,500 PSI  
fy = 60,000 PSI (REINF.)

**LOADING**

EQUIVALENT FLUID SOIL PRESSURE =  
EARTH DRY WEIGHT = 120 PCF  
SURCHARGE = 2 FT.

**SEISMIC DATA**

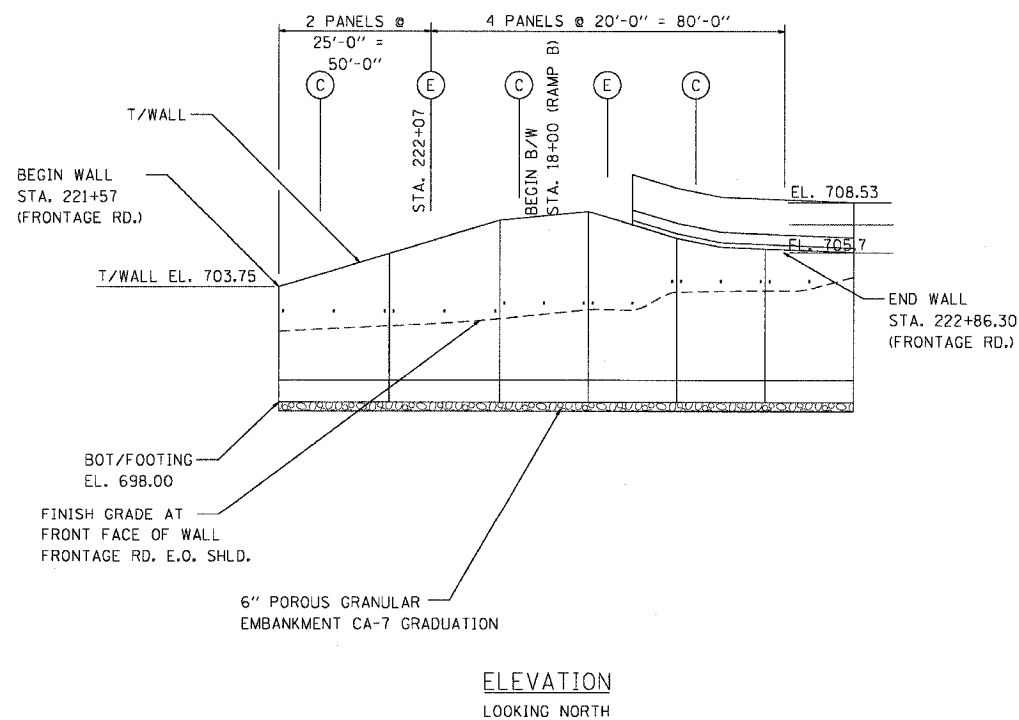
SEISMIC PERFORMANCE CATEGORY (SPC) = A  
BEDROCK ACCELERATION COEFFICIENT (A) = 0.04g  
SITE COEFFICIENT (S) = 1.0

**LEGEND**

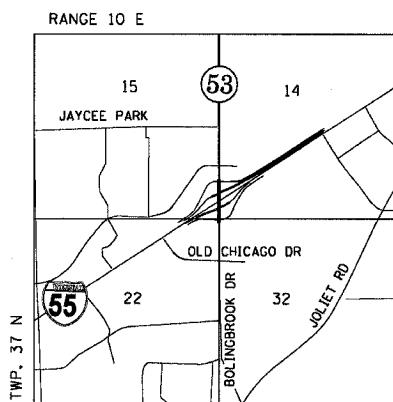
- ⊙ - CONSTRUCTION JOINT
- ⊕ - EXPANSION JOINT
- ⊗ - SOIL BORING LOCATION
- ← - DIRECTION OF TRAFFIC

DATE	
BY	
REVISIONS	
NO. 1	
NO. 2	
NO. 3	
NO. 4	
NO. 5	
NO. 6	
NO. 7	
NO. 8	
NO. 9	
NO. 10	

DATE	
BY	
REVISIONS	
NO. 1	
NO. 2	
NO. 3	
NO. 4	
NO. 5	
NO. 6	
NO. 7	
NO. 8	
NO. 9	
NO. 10	



ITEM	UNIT	QUANTITY
Concrete Structure	Cu. Yd.	84.2
Reinforcement Bars	Pound	9224
Expansion Bolts (1 in. dia.)	Each	60
Structure Excavation	Cu. Yd.	130
Porous Granular Embankment	Cu. Yd.	118
Rustication Finish	Sq. Ft.	77



**LOCATION SKETCH**

STR-01

REVISIONS	
NAME	DATE

ILLINOIS DEPARTMENT OF TRANSPORTATION

I-55 SB EXIT RAMP B RETAINING WALL  
STR. NO. 099-W020  
STA 17+20 TO STA 18+50

SCALE: N.T.S.  
DATE: 11/8/2004

DRAWN BY: RI  
CHECKED BY: RI

**DMJM HARRIS**  
303 East Wacker Drive, Suite 600  
Chicago, Illinois, 60601 Phone: 312.321.6101 Fax: 312.396.2392