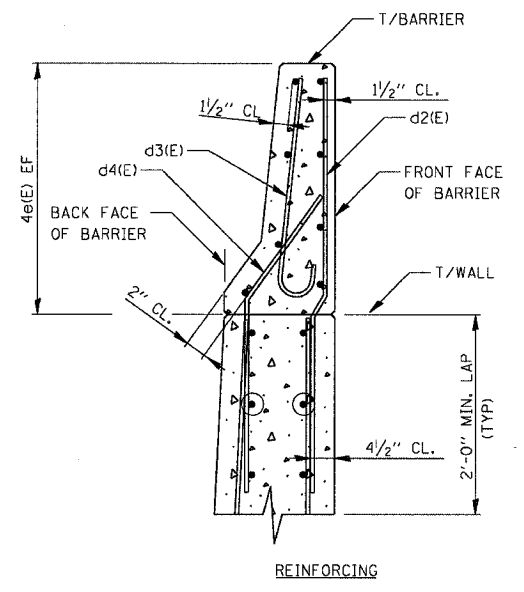
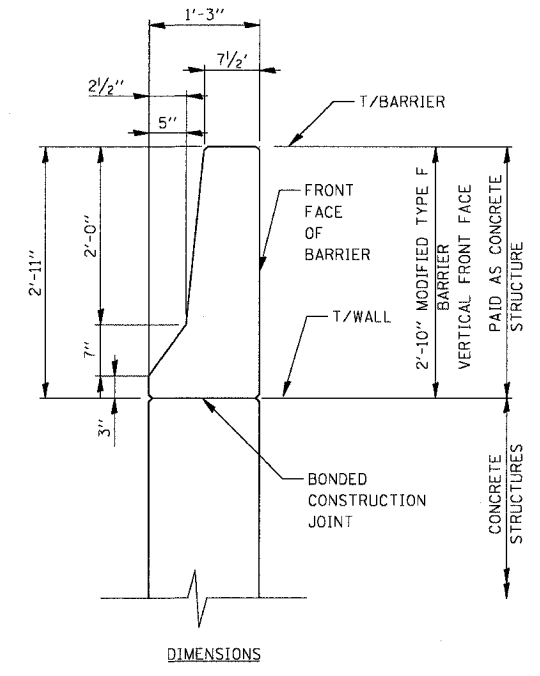
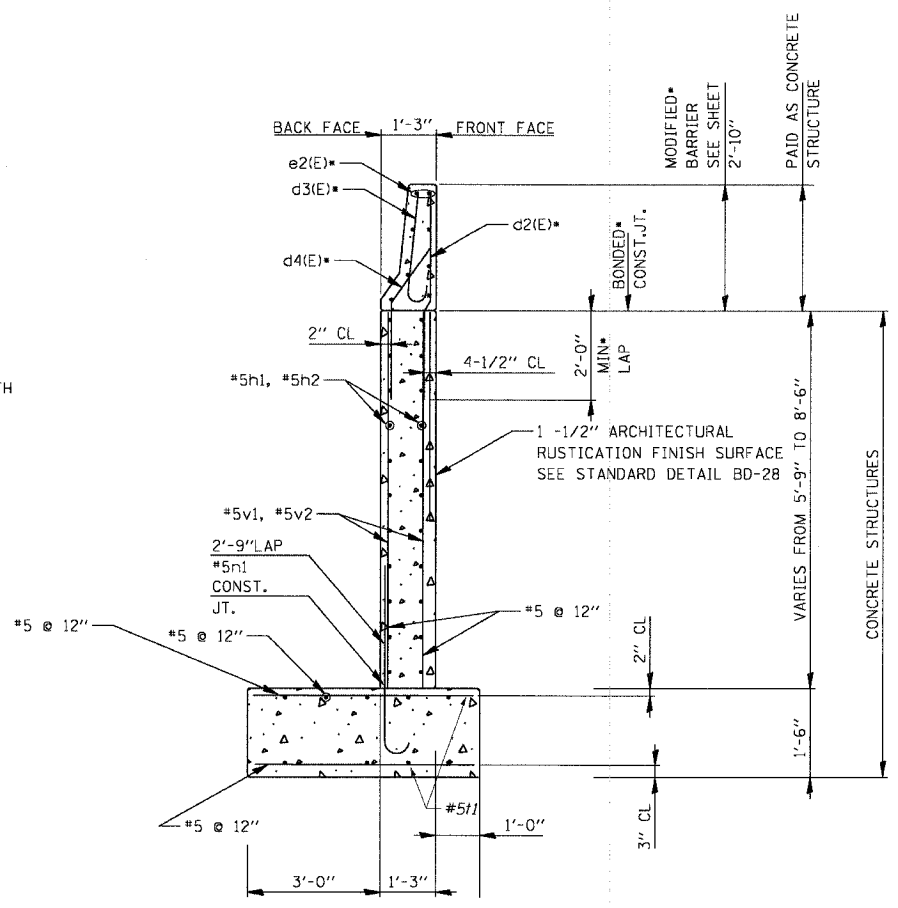
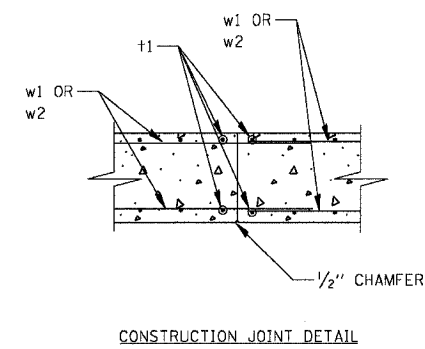
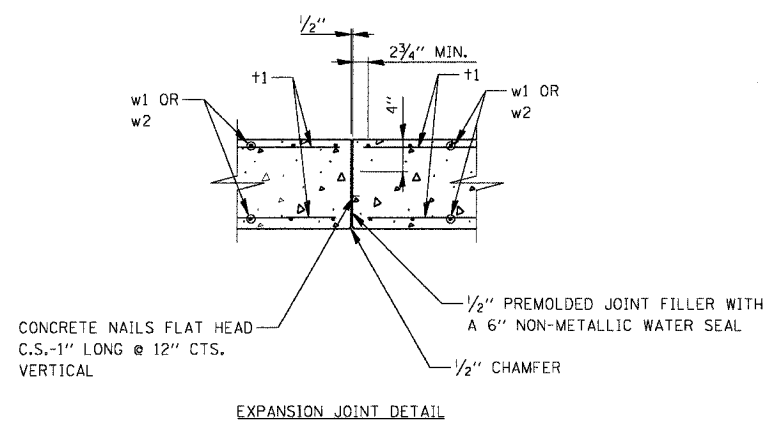


F.A.I. RTE.	SECTION	COUNTY	TOTAL SHEETS	SHEET NO.
55	2002-022 K	WILL	172	146
STA. 10+00	TO STA. 22+96.05			
FED. ROAD DIST. NO.	ILLINOIS	FED. AID PROJECT		
CONTRACT NO. 62389				

DATE	BY
DATE	BY
DATE	BY

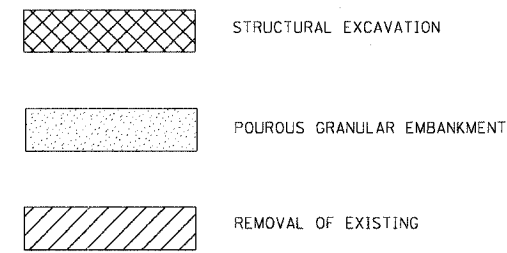
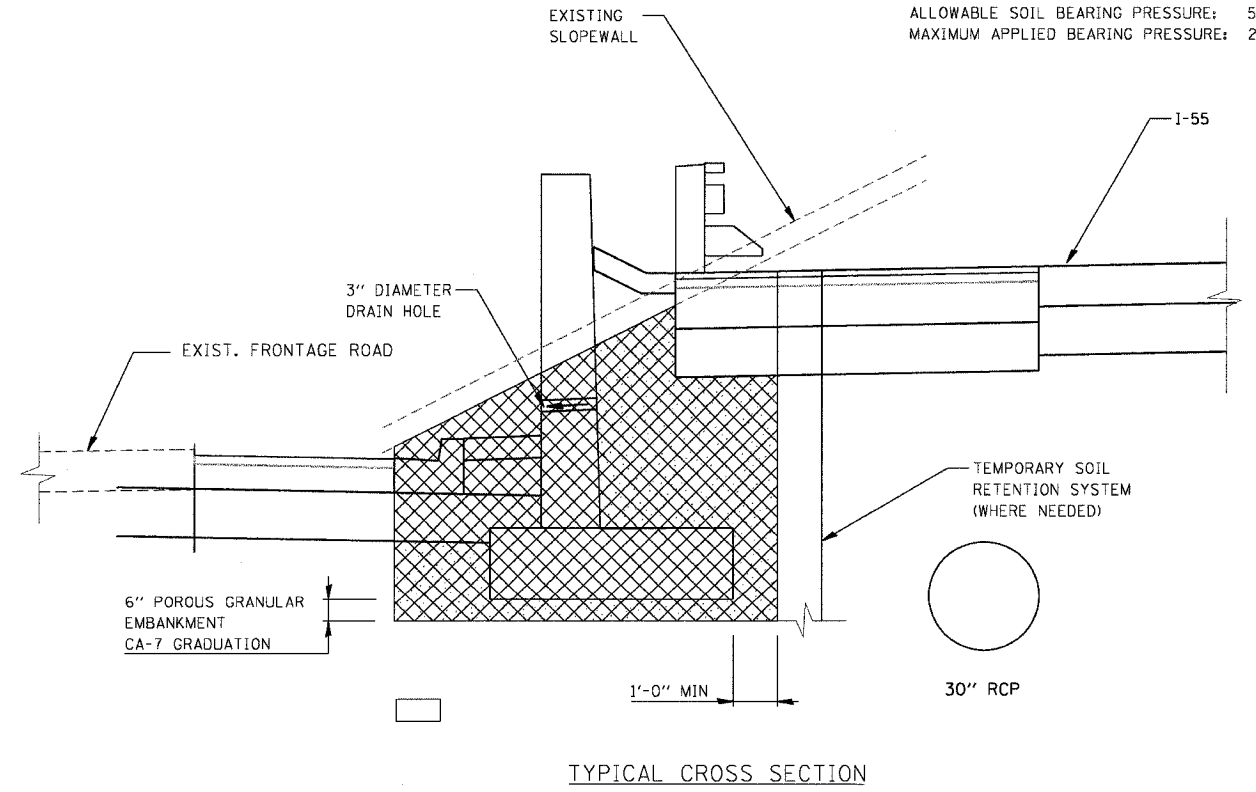
DATE	BY
DATE	BY
DATE	BY



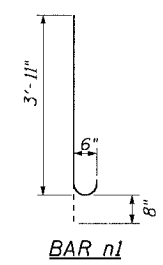
TYPICAL SECTIONS - MODIFIED BARRIER

RETAINING WALL STA. 221+57 TO STA. 222+85.45 FRONTAGE ROAD

ALLOWABLE SOIL BEARING PRESSURE: 5.2 KSF
 MAXIMUM APPLIED BEARING PRESSURE: 2.1 KSF



*** NOTE 1:**
 THE CONTRACTOR SHALL DETERMINE IN THE FIELD THE ACTUAL LENGTH OF THE REINFORCEMENT BAR NEEDED AND CUT THE REINFORCEMENT TO THE NECESSARY LENGTH. AFTER CUTTING REINFORCEMENT BAR, THE CONTRACTOR SHALL CLEAN AND PAINT (IN ACCORDANCE WITH ARTICLE 508.07) REINFORCEMENT BAR ENDS WITH EPOXY PAINT TO SUFFICIENTLY COVER BAR ENDS. NO ADDITIONAL PAYMENT WILL BE ALLOWED FOR THIS WORK AND SHALL BE INCLUDED IN THE CONTRACT UNIT BID PRICE FOR REINFORCEMENT BARS, EPOXY COATED.



BAR SCHEDULE					
BAR	No.	SIZE	LENGTH	SHAPE	LOCATION
h1	28	#5	24'-9"	—	Panel 1,2
h2	64	#5	19'-9"	—	Panels 3-6
v1	100	#5	7'-0"	—	Panel 1,2
v2	160	#5	9'-6"	—	Panels 3-6
n1	130	#5	4'-7"	U	Laps
l1	260	#5	5'-0"	—	Top & Bot. of Footing
w1	20	#5	24'-9"	—	Panel 1,2 Footing
w2	40	#5	19'-9"	—	Panels 3-6 footing
exp bolt	60	1" Dia.			
d2(E)	50	#5	4'-9"	—	Barrier Wall Str.
d3(E)	50	#5	3'-0"	—	Barrier Wall Str.
d4(E)	50	#5	3'-9"	—	Barrier Wall Str.
e4(E)	8	#5	50'-0"	—	Barrier Wall Str.

REVISIONS	
NAME	DATE

ILLINOIS DEPARTMENT OF TRANSPORTATION

I-55 SB EXIT RAMP B
 RETAINING WALL

SCALE: N.T.S.
 DATE: 11/8/2004

DRAWN BY: RI
 CHECKED BY: RI

DMJM HARRIS
 303 East Wacker Drive, Suite 600
 Chicago, Illinois, 60601 Phone: 312.321.6101 Fax: 312.396.2392