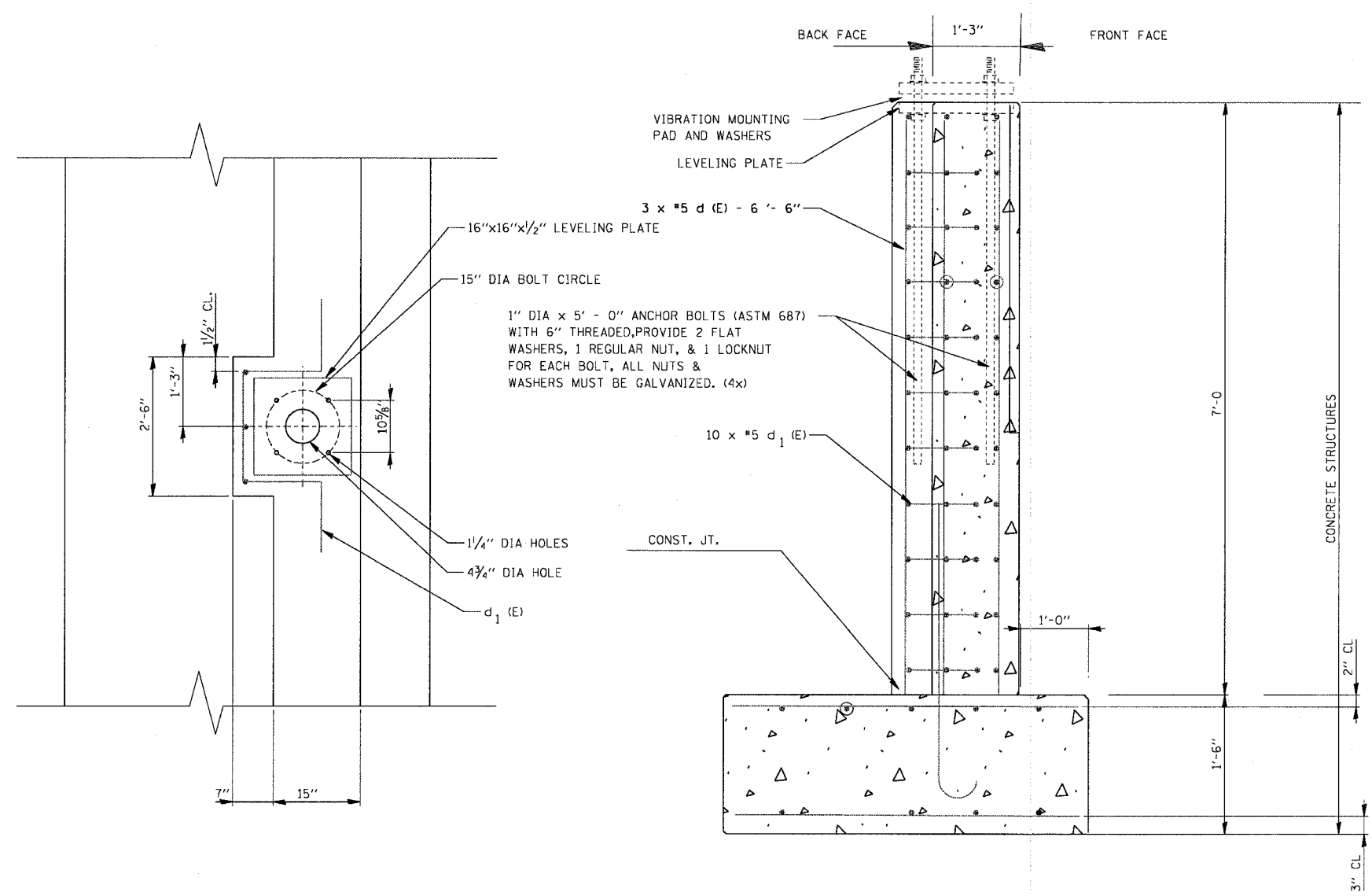


F.A.I. RTE.	SECTION	COUNTY	TOTAL SHEETS	SHEET NO.
55	2002-022 K	WILL	172	148
STA. 10+00		TO STA. 22+96.05		
FED. ROAD DIST. NO.		ILLINOIS FED. AID PROJECT		
CONTRACT NO. 62389				

PLAN	DATE	BY
SURVEYED		
GRADES CHECKED		
ALIGNMENT CHECKED		
STRUCTURE NOTATIONS CHECKED		
NO.		
DATE		
BY		

PROFILE	DATE	BY
SURVEYED		
GRADES CHECKED		
ALIGNMENT CHECKED		
STRUCTURE NOTATIONS CHECKED		
NO.		
DATE		
BY		



BAR	No.	SIZE	LENGTH	SHAPE	LOCATION
d(E)	10	#5	8'-11"		Barrier Wall Str.
d (E)	3	#5	6'-6"		Barrier Wall Str.

*** NOTES:**

1. LEVEL LIGHT POLE PLATES USING THE FLANGE NUTS. PRIOR TO POURING WALL SECTION. THE TOP OF THE PLATE SHALL BE AT THE SAME ELEVATION AS THE TOP OF WALL.
2. THE COST OF ANCHOR BOLTS, CONDUIT, LEVELING PLATE, AND FOUNDATION IS INCLUDED IN THE COST OF CONCRETE STRUCTURE

REVISIONS	
NAME	DATE

STR-04
 ILLINOIS DEPARTMENT OF TRANSPORTATION
 I-55 SB EXIT RAMP B
 RETAINING WALL
 SCALE: N.T.S.
 DATE: 11/8/2004
 DRAWN BY: RI
 CHECKED BY: RI

DMJM HARRIS
 303 East Wacker Drive, Suite 600
 Chicago, Illinois, 60601 Phone: 312.321.6101 Fax: 312.396.2392