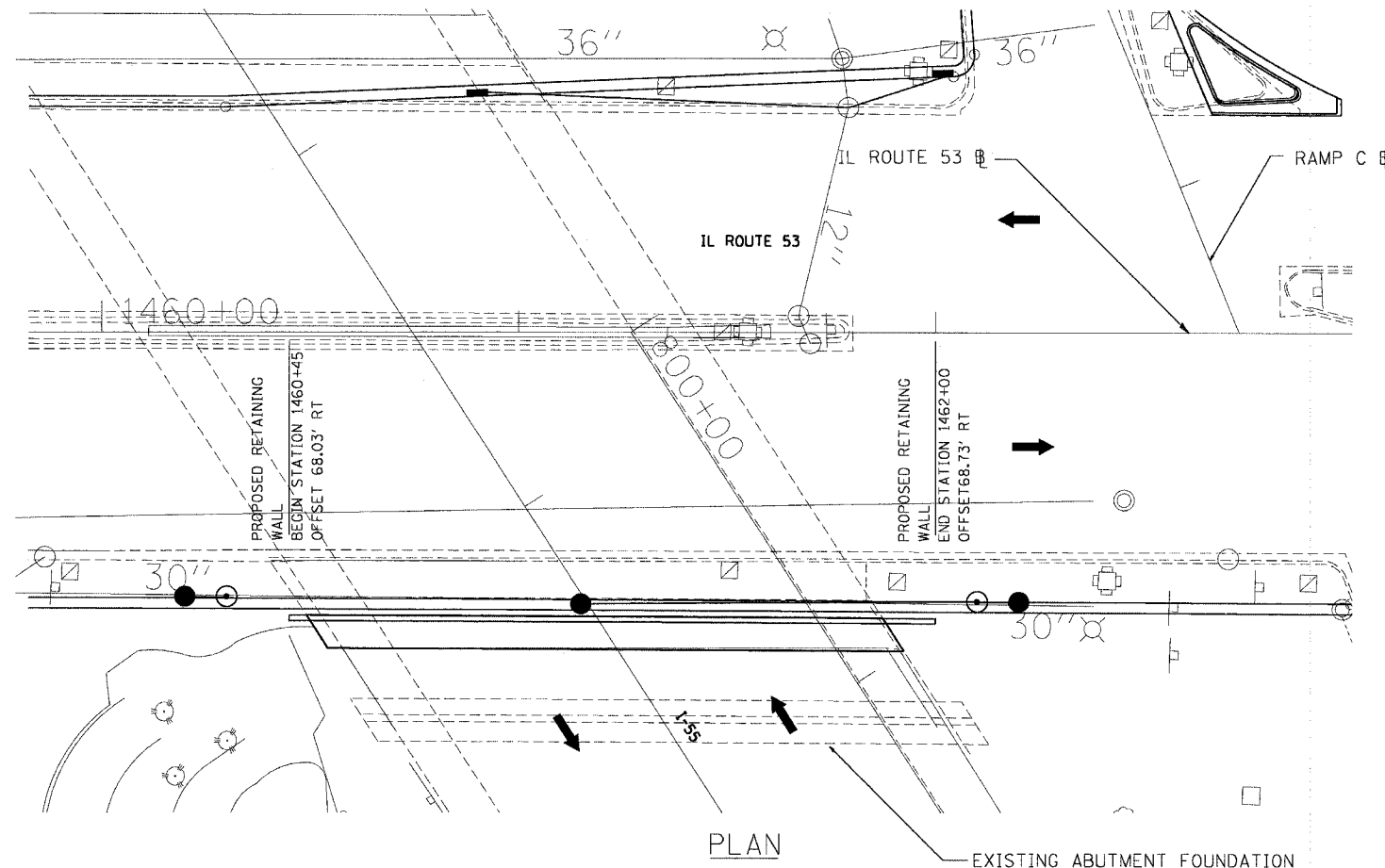


F.A.I. RTE.	SECTION	COUNTY	TOTAL SHEETS	SHEET NO.
55	2002-022 K	WILL	172	149
STA. 10+00		TO STA. 22+96.05		
FED. ROAD DIST. NO.	ILLINOIS FED. AID PROJECT			
CONTRACT NO. 62389				

- BM #300: SET "□" ON W. SIDE OF CONCRETE BASE OF I-55 "↑" SOUTH BLOOMINGTON/I-55 NORTH "←" CHICAGO ON E. SIDE OF RTE 53 ±150' OF N BOUND I-55 RAMP, STA. 1456+59.76, 72.33' RT, IL RTE 53 @ ELEVATION 704.52.
- BM #302: SET "□" ON THE SW CORNER OF THE TRAFFIC SIGNAL CONTROL BOX AT THE NE CORNER OF THE EXIT RAMP OF S. BOUND I-55 & RTE 53, STA. 1463+96.26, 104.52' RT, IL RTE 53 @ ELEVATION 699.38.



GENERAL NOTES

- STATION AND OFFSETS ARE MEASURED FROM IL RTE 53 TO THE FRONT FACE OF THE RETAINING WALL.
- EXISTING UTILITIES IN CONFLICT WITH RETAINING WALL SHALL BE ABANDONED OR RELOCATED ACCORDING TO DIRECTIONS GIVEN IN THE ROADWAY PLANS.
- THE CONTRACTOR SHALL SUBMIT A TEMPORARY SOIL RETENTION SYSTEM DESIGN INCLUDING PLAN DETAILS AND CALCULATIONS FOR REVIEW AND ACCEPTANCE BY THE ENGINEER.
- ALL CONSTRUCTION JOINTS SHALL BE BONDED.
- ALL EXPOSED CONCRETE EDGES SHALL HAVE 3/4" BY 45° CHAMFER EXCEPT WHERE SHOWN OTHERWISE. CHAMFER ON VERTICAL EDGES SHALL BE CONTINUED A MINIMUM OF 1 FOOT BELOW THE FINISHED GRADE LINE.
- A PROTECTIVE COAT SHALL BE APPLIED ACCORDING TO SECTION 503 OF THE STANDARD SPECIFICATIONS TO ALL CONCRETE SURFACES NOT IN CONTACT WITH SOIL.
- REINFORCEMENT BARS SHALL CONFORM TO THE REQUIREMENTS OF AASHTO M3L, M42 OR M53 GRADE 60.

DESIGN SPECIFICATIONS:

2002 AASHTO SPECIFICATIONS FOR HIGHWAY BRIDGES

DESIGN STRESSES:

FIELD UNITS

f'c = 3,500 PSI
fy = 60,000 PSI (REINF.)

LOADING

EQUIVALENT FLUID SOIL PRESSURE = EARTH DRY WEIGHT = 120 PCF
SURCHARGE = 2 FT.

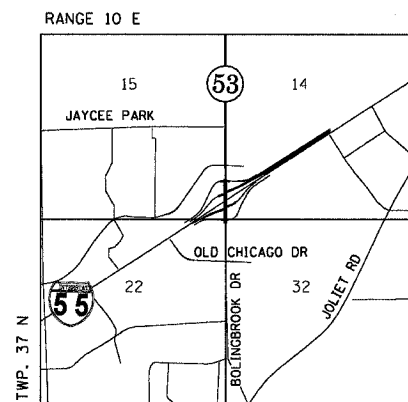
SEISMIC DATA

SEISMIC PERFORMANCE CATEGORY (SPC) = A
BEDROCK ACCELERATION COEFFICIENT (A) = 0.04g
SITE COEFFICIENT (S) = 1.0

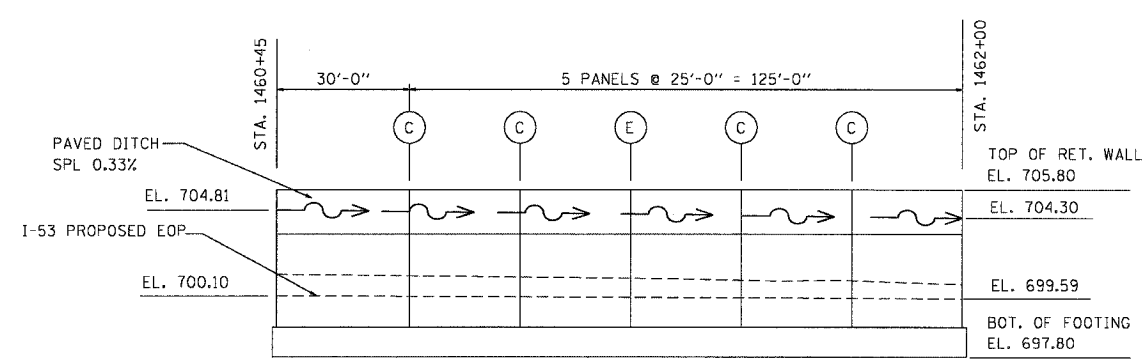
LEGEND

- (C) - CONSTRUCTION JOINT
- (E) - EXPANSION JOINT
- ⊗ - SOIL BORING LOCATION
- ← - DIRECTION OF TRAFFIC

BILL OF MATERIAL		
ITEM	UNIT	QUANTITY
Concrete Structure	Cu. Yd.	80.1
Reinforcement Bars	Pound	6753
Expansion Bolts (1 in. dia.)	Each	45
Structure Excavation	Cu. Yd.	185
Slope Wall Removal	Sq. Yd.	235
Porous Granular Embankment	Cu. Yd.	90.4



LOCATION SKETCH



ELEVATION
LOOKING EAST

REVISIONS		ILLINOIS DEPARTMENT OF TRANSPORTATION IL ROUTE 53 RETAINING WALL STR. NO. 099-W021 STA 1460+45 TO STA 1462+00
NAME	DATE	

SCALE: N.T.S.
DATE: 11/8/2004
DRAWN BY: RI
CHECKED BY: RI

DMJM HARRIS
303 East Wacker Drive, Suite 600
Chicago, Illinois, 60601 Phone: 312.321.6101 Fax: 312.396.2392

	DATE	
	BY	

	DATE	
	BY	