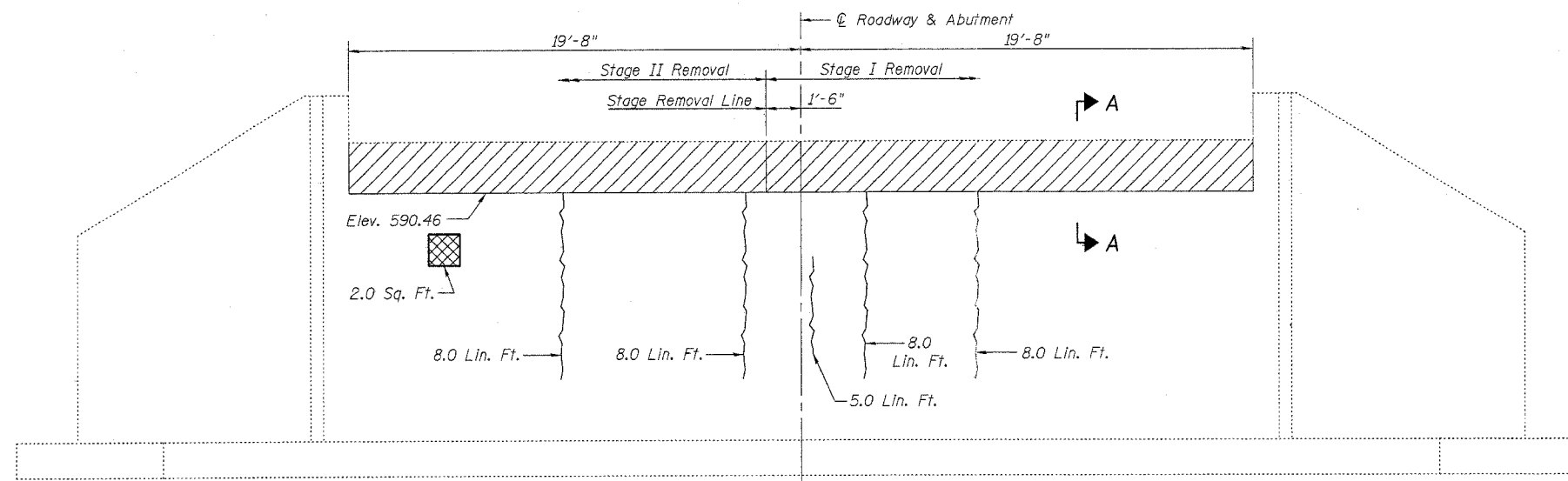


F.A.I.	SECTION	COUNTY	TOTAL SHEETS	SHEET NO.
55	27 BR	WILL	29	13
FED. ROAD DIST. NO. 7		ILLINOIS	FED. AID PROJECT	

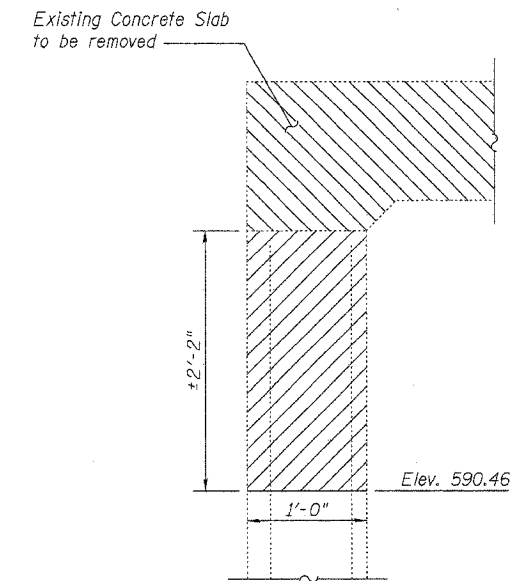
SHEET NO.  
5 of 8

Contract No.: 62424



**EXISTING ELEVATION**

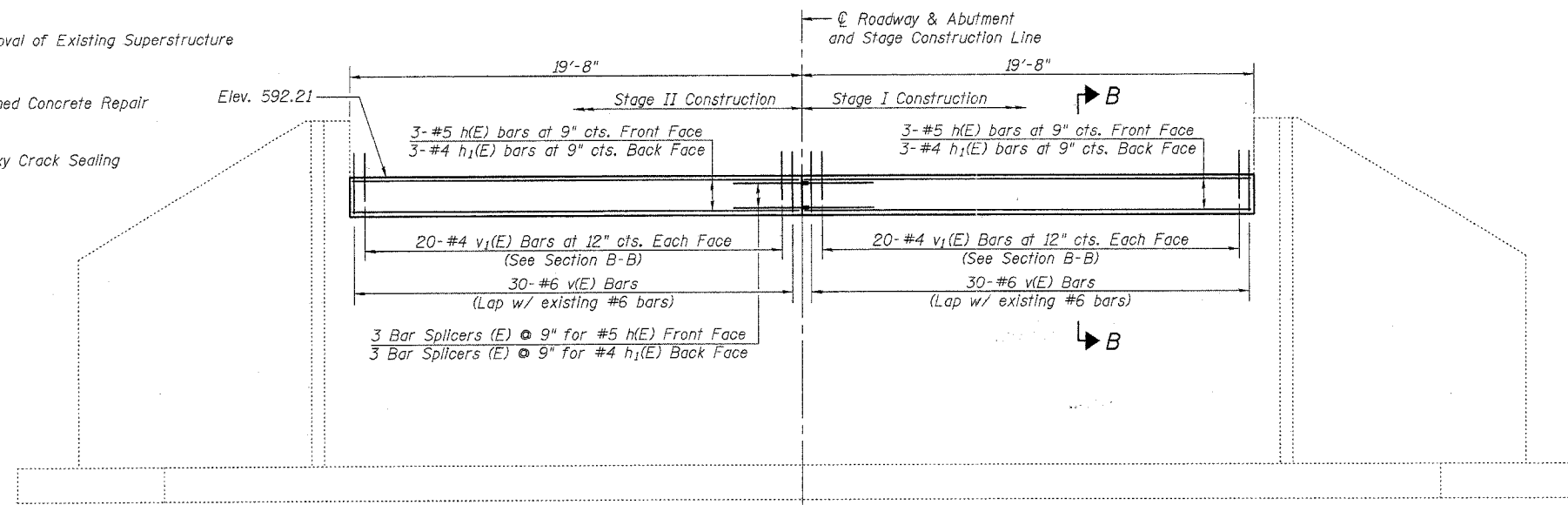
Looking North  
(Existing slab not shown)



**SECTION A-A**

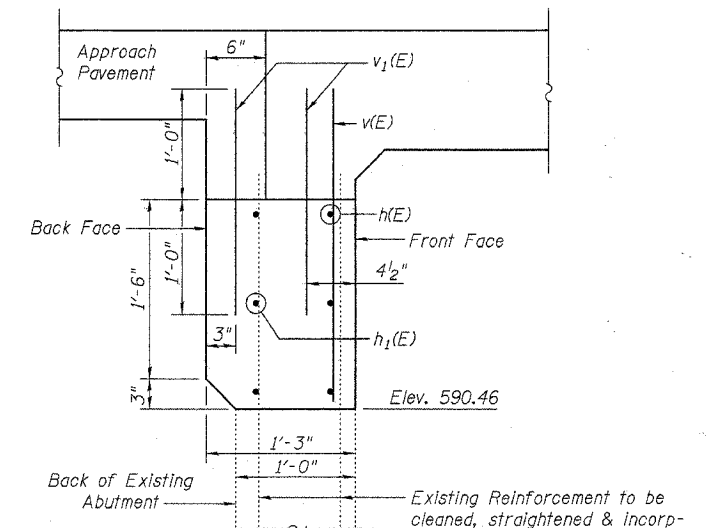
**LEGEND**

- Concrete Removal
- Removal of Existing Superstructure
- Formed Concrete Repair
- Epoxy Crack Sealing



**PROPOSED ELEVATION**

Looking North



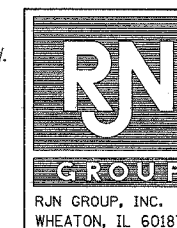
**SECTION B-B**

**BILL OF MATERIAL - NORTH ABUTMENT**

Bar	No.	Size	Length	Shape
h(E)	6	#5	19'-5"	—
h <sub>1</sub> (E)	6	#4	19'-5"	—
v(E)	60	#6	2'-7"	—
v <sub>1</sub> (E)	80	#4	2'-0"	—
Concrete Removal			Cu. Yd.	3.2
Structure Excavation			Cu. Yd.	5.6
Porous Granular Embankment			Cu. Yd.	5.6
Reinforcement Bars, Epoxy Coated			Pound	540
Concrete Structures			Cu. Yd.	3.1
Bar Splicers			Each	6
Epoxy Crack Sealing			Foot	37
Formed Concrete Repair, Depth Equal to or Less Than 5"			Sq. Ft.	2

**NOTES**

- Hatched areas indicate Concrete Removal. Edges of Concrete Removal areas shall be sawcut 3/4" prior to the removal of the concrete.
- Existing reinforcement bars to remain in place and be incorporated into new work shall be blast cleaned to gray metal and straightened. Blast cleaning and straightening shall be included with the cost of Concrete Removal.
- Existing reinforcement bars which have lost 10% or more of their original diameter from corrosion shall be supplemented by new epoxy coated bars, of the same diameter, spliced in place. Furnishing and placing supplemental epoxy coated reinforcement bars shall be included with the cost of Reinforcement Bars, Epoxy Coated.
- Care shall be exercised by the Contractor during and following removal operations to ensure that the existing rebar remaining in place are not damaged. All protruding rebar shall be cleaned, straightened, and properly positioned prior to concrete placement. Any rebar damaged during concrete removal shall be repaired or replaced using an approved Bar Splicer or Mechanical System. Cost included in "Concrete Removal".
- Porous Granular Embankment shall be placed down to the elevation of the concrete removal line behind the abutment after the superstructure has been poured and the falsework removed.



REVISIONS	
NAME	DATE

ILLINOIS DEPARTMENT OF TRANSPORTATION  
 NORTH ABUTMENT  
 FAI RTE. 55 (EAST FRONTAGE ROAD)  
 OVER SUNNYLAND DRAIN  
 SECTION 27 BR  
 WILL COUNTY  
 STATION 105+12.13  
 STRUCTURE NO. 099-0032  
 DATE: 11/10/04  
 DRAWN BY WJV  
 CHECKED BY BLB