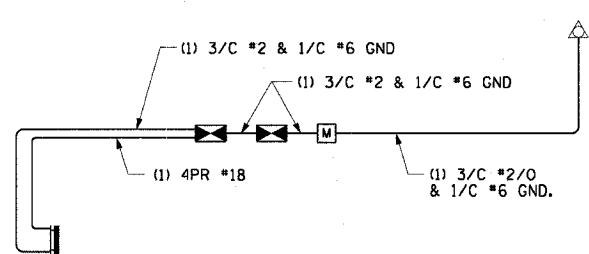
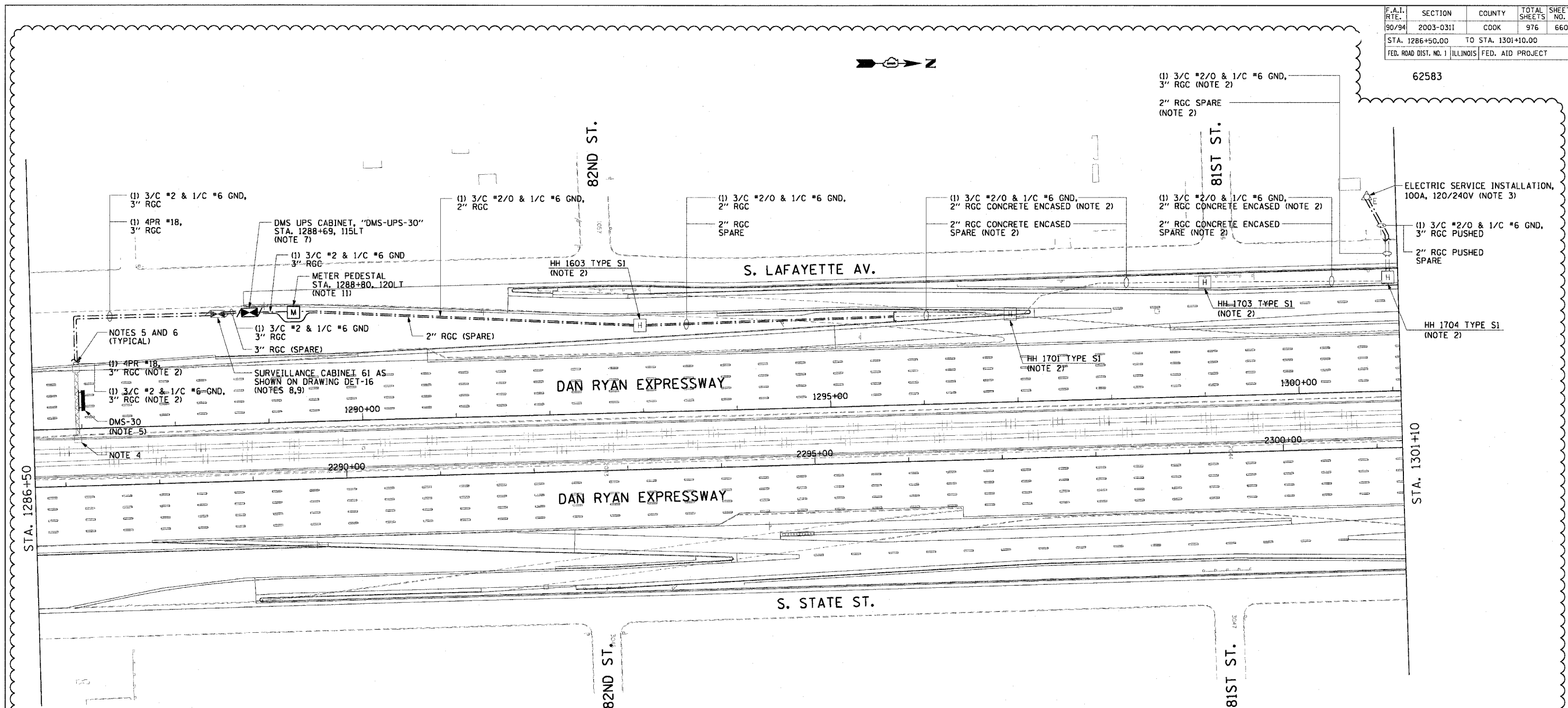


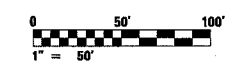
F.A.I. RTE.	SECTION	COUNTY	TOTAL SHEETS	SHEET NO.
90/94	2003-0311	COOK	976	660
STA. 1286+50.00 TO STA. 1301+10.00		FED. ROAD DIST. NO. 1 ILLINOIS FED. AID PROJECT		



WIRING DIAGRAM, DMS-30

**NOTES:**

- SEE DRAWINGS ME-01 AND ME-02 FOR ELECTRICAL SYMBOLS AND ABBREVIATIONS.
- NOTED CONDUITS AND HANDHOLES WERE FURNISHED AND INSTALLED BY OTHERS UNDER A SEPARATE CONTRACT. ALL CABLES ARE TO BE FURNISHED AND INSTALLED UNDER THIS CONTRACT.
- NEW ELECTRIC SERVICE TO BE INSTALLED ON EXISTING UTILITY POLE. CONDUIT UP THE POLE, WEATHERHEAD, AND COILED CABLE TO BE PROVIDED ACCORDING TO UTILITY COMPANY REQUIREMENTS.
- TYPE III SIGN TRUSS TO BE FURNISHED AND INSTALLED AT STATION NUMBER 1287+00 BY OTHERS IN CONTRACT NUMBER 62695.
- SEE DRAWING DT-03 FOR SIGN INSTALLATION AND DUCT DETAILS.
- CONTRACTOR MUST INTERCEPT CONDUIT STUBS AND MAKE CONNECTIONS TO THE NEW CONDUITS INSTALLED UNDER THIS CONTRACT.
- SEE DRAWING DT-06 FOR UPS EQUIPMENT DETAILS. SEE DRAWINGS DT-36 AND DT-47 FOR CABINET AND FOUNDATION DETAILS.
- CABINET FOUNDATION WAS INSTALLED BY OTHERS IN SEPARATE CONTRACT. CONTRACTOR MUST INTERCEPT CONDUIT STUBS IN THIS FOUNDATION AND CONNECT NEW CONDUITS AS SHOWN.
- TEMPORARY LEASED COMMUNICATION LINE CONNECTION TO BE INSTALLED FOR TEMPORARY COMMUNICATION BETWEEN THE SIGN AND IDOT TRAFFIC SYSTEMS CENTER. UTILIZE SPARE CONDUIT SYSTEM TO INSTALL 6/C #19 TELEPHONE CABLE BETWEEN CABINET AND UTILITY POLE FOR THIS TEMPORARY CONNECTION. CABLES TO BE REMOVED AFTER PERMANENT INSTALLATION IS COMPLETE.
- COORDINATE INSTALLATION OF ALL ITEMS SHOWN ON THIS SHEET WITH CONTRACT NUMBERS 62594 AND 62695.
- NEW METER PEDESTAL TO BE FURNISHED AT APPROXIMATE LOCATION SHOWN ON THIS DRAWING. METER PEDESTAL TO BE LOCATED ON EXPRESSWAY SIDE OF FENCE OR KNEE WALL AND POSITIONED SUCH THAT METER CAN BE READ FROM THE FRONTAGE ROAD. FINAL LOCATION TO BE APPROVED BY THE ENGINEER. SEE DRAWING DT-06A FOR METER PEDESTAL DETAILS.



REVISIONS	
NAME	DATE
REVISION	2/11/05

DMS-01  
 ILLINOIS DEPARTMENT OF TRANSPORTATION  
 F.A.I. 90/94 (DAN RYAN EXPRESSWAY)  
 31st STREET TO I-57  
 DYNAMIC MESSAGE SIGN  
 SB 83RD ST. SITE LAYOUT  
 SIGN DMS-30

SCALE: 1"=50'  
 DATE: October 29, 2004  
 DRAWN BY: HAR  
 CHECKED BY: BMW

02/11/2005 11:59:38 AM m:\p40468\elect\90-115\SS\IN\Contract 2\DWG\2002\2A.dwg